

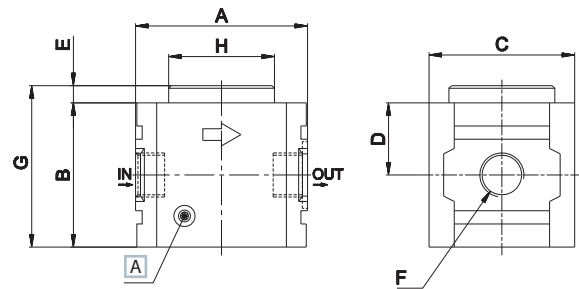
The gradual starter is used in pneumatic circuits where a cut-off in pressure, an abrupt start-up is to be avoided to prevent possible damages to equipment.

FUNCTIONING PRINCIPLE: 2 way valve which, in the stand-by position, allows the passage of an air regulated flow. When the working pressure is reached the valve allows the air full passage.

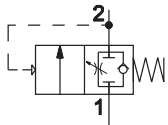
Size	0
Part No.	HZE0Y08G
Threaded port	G1/4
Flow rate (NI/min) ^(A)	900
Max inlet pressure (bar-MPa-psi)	10-1-145
Min pressure (bar)	2
Fluid	compressed air
Temperature (°C)	-20 ÷ 80
Weight (Kg)	0,300

(A) = inlet pressure 6 bar, outlet pressure 5 bar - Δp 1 bar

HZE-Y



A Regulating screw



size	A	B	C	D	E	F	G	Ø H
0	55	55	40	27,5	6,5	G1/4	61,5	40

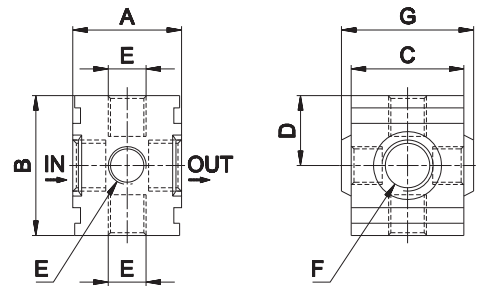


Threaded ports on each side. Possibility to assembly pressure switch.

Size	0
Part no.	HZE0N08G
Threaded port (A)	In/Out G1/4 Auxiliary G1/8
Max inlet pressure (bar-MPa-psi)	10-1-145
Fluid	compressed air
Temperature (°C)	0 ÷ 60
Weight (Kg)	0,064

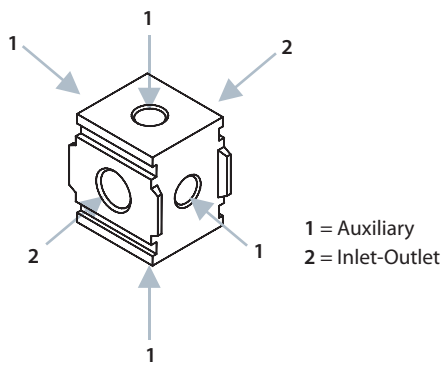
(A) = plug not included

HZE-N



size	A	B	C	D	E	F	G
0	28	36	29	18	G1/8	G1/4	34

> Ports

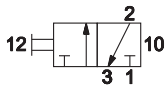
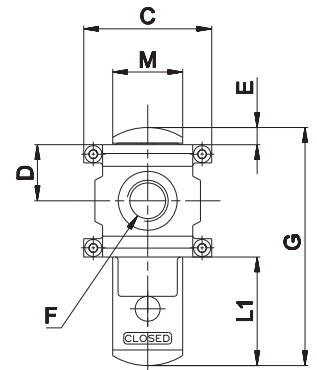
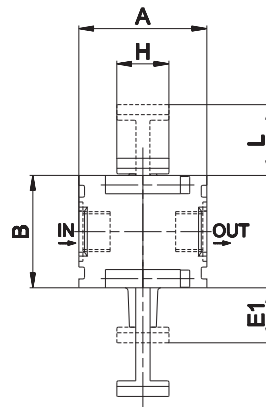


The lockable valve is a 3 way 2 position manual valve. In the closed position it enables discharge of the downstream system of the air preparation equipment. By using one lock (not included) the user is not allowed to pressurize the system accidentally.

Size	0
Part no.	HZE0P08G
Threaded port	G1/4
Flow rate (NI/min) ^(A)	900
Max inlet pressure (bar-MPa-psi)	10-1-145
Fluid	compressed air
Temperature (°C)	0 ÷ 60
Weight (Kg)	0,21

(A) = inlet pressure 6 bar, outlet pressure 5 bar - Δp 1 bar

HZE-P



size	A	B	C	D	E	E1	F	G	H	L	L1	M
0	41	36	41	18	6	18	G1/4	77	17	23	35	22,5

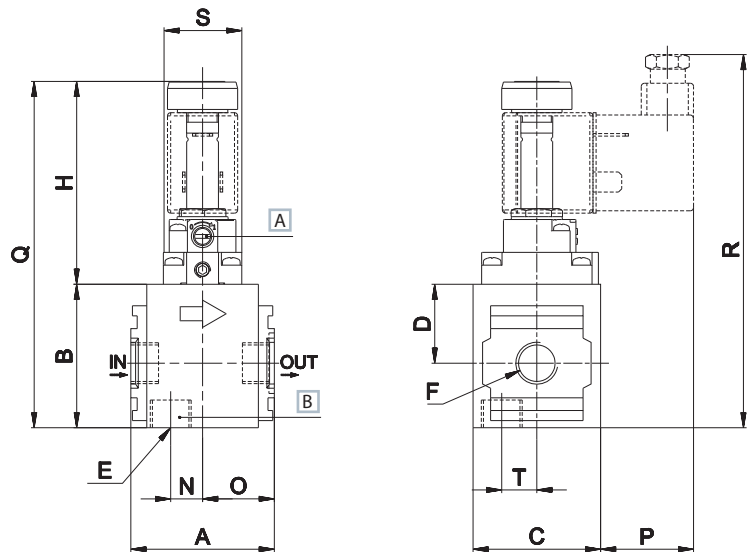
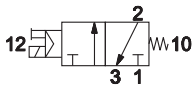


The 3 ways valve enable system supply and exhaust.
Version with CNOMO or 15mm electropilot is available upon request.

Size	0
Part no.	HZE0S08G
Threaded port	G1/4
Flow rate (NI/min) ^(A)	900
Max inlet pressure (bar-MPa-psi)	10-1-145
Min pressure (bar-MPa-psi)	2 - 0,16 - 23
Fluid	compressed air
Temperature (°C)	5 ÷ 60
Weight (Kg)	0,460
Commutation system	poppet valve
Ways/Position	3/2 NC
Control	indirect electropneumatic control
Nominal diameter	8
Electropilot	U1 / U3
Coil	DA
Manual Override	with 2 position screw

(A) = inlet pressure 6 bar, outlet pressure 5 bar - Δp 1 bar

HZE-S



- A Manual override
- B Exhaust

size	A	B	C	D	E	F	H	N	O	P	Q	R	S	T
0	45	45	40	25	G1/4	G1/4	64	10	22,5	29	109	117	24,5	11

Coils and silencers are not included

