

HZ9

Pressure gauges



TECHNICAL CHARACTERISTICS

Accuracy	EN 837 class 1,6 – 2,5. ASME B10.1 grade B
Protection	IP 43

CONSTRUCTIVE CHARACTERISTICS

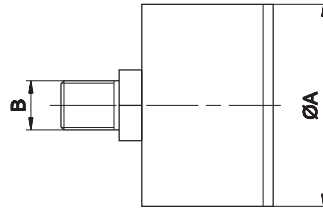
Thread	brass, copper alloy
Movement	brass
Indicator	aluminium, black painted
Dial	acrylic pressure mounted

CODIFICATION KEY

H	Z	9	P	B	S	4	0	0	3	1	8
1	2	3	4	5							

1 Series	2 Type	3 Dial diameter	4 Scale	5 Thread
HZ9 = Pressure gauge	P = Round pressure gauge PB = Pressure gauge with flange for panel mounting PBS = Pressure gauge with bracket for panel mounting	40 = Ø 40 mm 50 = Ø 50 mm 63 = Ø 63 mm	03 = 0 - 2,5 bar 0 - 0,25 MPa 06 = 0 - 6 bar 0 - 0,6 MPa 10 = 0 - 10 bar 0 - 1 MPa	14 = R14 18 = R18

HZ9P Round pressure gauge

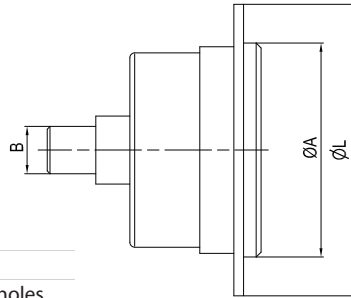


Part No.	Ø A	Scale		Thread - B
		bar	MPa	
HZ9P400318	40	0 - 2,5	0 - 0,25	R1/8
HZ9P400618	40	0 - 6	0 - 0,6	R1/8
HZ9P401018	40	0 - 10	0 - 1	R1/8
HZ9P500314	50	0 - 2,5	0 - 0,25	R1/4
HZ9P500614	50	0 - 6	0 - 0,6	R1/4
HZ9P501014	50	0 - 10	0 - 1	R1/4
HZ9P630314	63	0 - 2,5	0 - 0,25	R1/4
HZ9P630614	63	0 - 6	0 - 0,6	R1/4
HZ9P631014	63	0 - 10	0 - 1	R1/4

Body: technopolymer

Assembly: threaded connection

HZ9PB Pressure gauge with flange for panel mounting

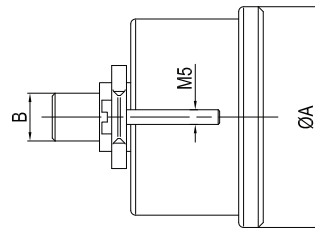


Part No.	Ø A	Scale		Thread - B	Ø L
		bar	MPa		
HZ9PB400318	40	0 - 2,5	0 - 0,25	R1/8	60,5
HZ9PB400618	40	0 - 6	0 - 0,6	R1/8	
HZ9PB401018	40	0 - 10	0 - 1	R1/8	
HZ9PB500314	50	0 - 2,5	0 - 0,25	R1/4	64
HZ9PB500614	50	0 - 6	0 - 0,6	R1/4	
HZ9PB501014	50	0 - 10	0 - 1	R1/4	
HZ9PB630314	63	0 - 2,5	0 - 0,25	R1/4	74
HZ9PB630614	63	0 - 6	0 - 0,6	R1/4	
HZ9PB631014	63	0 - 10	0 - 1	R1/4	

Body: metal, black painted

Assembly: chromium plated front flange with 3 holes

HZ9PBS Pressure gauge with bracket for panel mounting



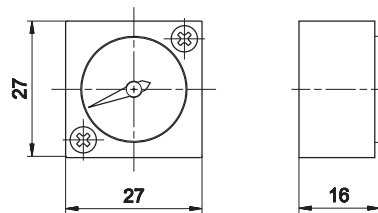
Part No.	Ø A	Scale		Thread - B
		bar	MPa	
HZ9PBS400318	40	0 - 2,5	0 - 0,25	R1/8
HZ9PBS400618	40	0 - 6	0 - 0,6	R1/8
HZ9PBS401018	40	0 - 10	0 - 1	R1/8
HZ9PBS500314	50	0 - 2,5	0 - 0,25	R1/4
HZ9PBS500614	50	0 - 6	0 - 0,6	R1/4
HZ9PBS501014	50	0 - 10	0 - 1	R1/4
HZ9PBS630314	63	0 - 2,5	0 - 0,25	R1/4
HZ9PBS630614	63	0 - 6	0 - 0,6	R1/4
HZ9PBS631014	63	0 - 10	0 - 1	R1/4

Body: metal, black painted

Montaggio: border with rear bracket

5

HZ9464G Recessed pressure gauge



Body: tecnopolymer

Assembly: HZE series regulator and filter regulator size 0-1-2

Scale: 0 ÷ 12 bar

Dial: polycarbonate

Accuracy: ± 3% full scale

Screw torque: Max 0,6 Nm

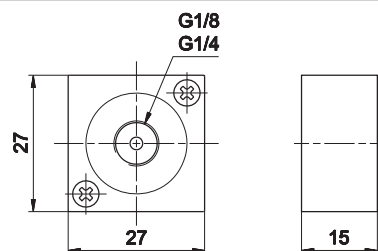
HZE7Z Threaded adaptor for pressure gauge



G1/8
HZE7Z480



G1/4
HZE7Z490



Screw torque: Max 0,6 Nm