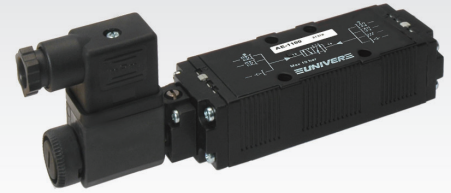
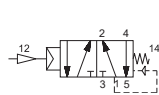
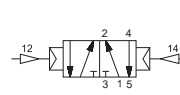


CHARACTERISTICS

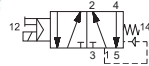
Ambient temperature	-10 ÷ +50 °C	
Fluid	50 µm filtered air, with or without lubrication	
Commutation system	mixed	
Max pressure	10 bar	
Connections	BF series sub-bases	
	size 1	size 2
Nominal bore (mm)	8	10
Nominal flow rate (NI/min)	1480	2300
Valve body	acetalic resin	
Seals	NBR, polyurethane	
Electropilot/Coil	AA series/U1	
Power consumption	3,5 W (DC) - 5 VA (AC)	
Voltage	12 V DC - 24 V DC - 24 V AC - 110 V AC - 230 V AC	
Connector	AM-5110	
Manual override	impulse screw - 2 positions	


 Available ATEX version upon request
CE Ex II 2Gc IIC T5 II 2Dc T100°C
Single/double pneumatic impulse


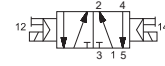
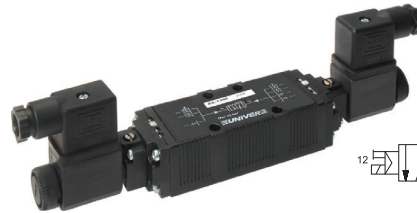
	size
AE-1009	1
AE-1120	2



	size
AE-1010	1
AE-1121	2

Single electrical impulse


	size
AE-1000	1
AE-1100	2

Double electrical impulse


	size
AE-1003	1
AE-1103	2

ISO 1 Sub-base and plate

BF-1060
 G1/8

BF-1061
 G1/4

BF-1062
 G1/8

BF-1063
 G1/4

BF-1071
 G1/8

BF-1072
 G1/4

BF-1071S
 G1/8

BF-1072S
 G1/4

BF-1065 On top
BF-1066 Rear
BF-1068 In line
 G3/8

BF-1070
ISO 2 Sub-base and plate

BF-1150
 G1/4

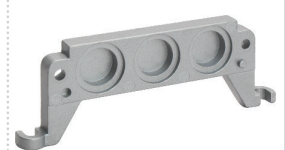
BF-1151
 G3/8

BF-1152
 G1/4

BF-1153
 G3/8

BF-1160
 G1/4

BF-1161
 G3/8

BF-1154 In line
BF-1155 Rear
 G1/2

BF-1162

 Solenoid valves are supplied without coil, connector and locking nuts
 See ATEX Catalogue for types and versions