



Main Features

- IP65 protection rating
- One size only, 16 mm thick
- Connections with female threads machined into the valve body
- Quick and easy assembly with few components in the solenoid valve assembly



Reference standard

1907/2006
REACH ✓

2011/65/CE
RoHS ✓

PED
2014/68/UE



Fluids

- Air



Component Parts and Materials

- Body: anodised aluminium
- Spool in aluminium
- Piston & Spool Seals in Elastomer
- Springs: Stainless steel AISI 302

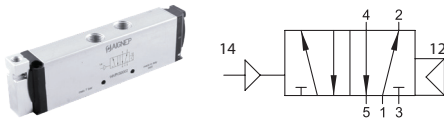


16 MM

FLOW RATE:
553→706 NI/min

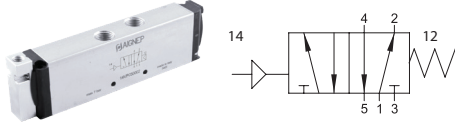
SOLENOID VALVES - G1/8

MONOSTABLE WITH PNEUMATIC RETURN



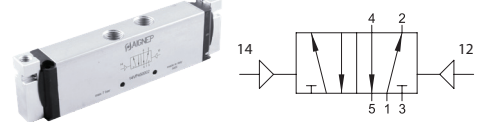
| Code | Function | Vie |
|----------------|----------|-----|
| 14V P4 5 00 02 | - | 5/2 |
| - | - | - |
| - | - | - |

MONOSTABLE MECHANICAL SPRING RETURN (ON REQUEST)



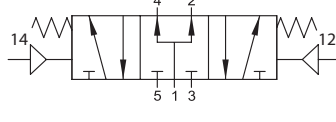
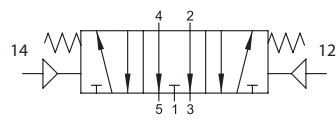
| Code | Function | Vie |
|----------------|----------|-----|
| 14V P0 5 00 02 | - | 5/2 |
| - | - | - |
| - | - | - |

BISTABLE



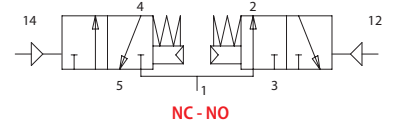
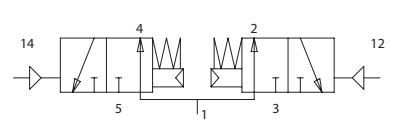
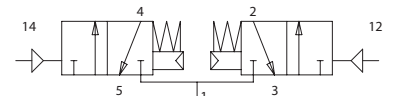
| Code | Function | Vie |
|----------------|----------|-----|
| 14V P1 5 00 02 | - | 5/2 |
| - | - | - |
| - | - | - |

MONOSTABLE CON RETURN MECCANICA







| Code | Function | Vie |
|----------------|----------|-----|
| 14V P0 7 CC 02 | CC | 5/3 |
| 14V P0 7 OC 02 | OC | 5/3 |
| 14V P0 7 PC 02 | PC | 5/3 |

DOUBLE 3/2 MONOSTABLE MECHANICAL RETURN



| Code | Function | Vie |
|----------------|----------|-----|
| 14V P0 8 NC 02 | NC | 5/4 |
| 14V P0 8 NO 02 | NO | 5/4 |
| 14V P0 8 NN 02 | NC-NO | 5/4 |

| STRAIGHT MALE ADAPTOR (PARALLEL) WITH HEXAGON EMBEDDED | | POLYAMIDE PLUG | | ORIENTING ELBOW | | ORIENTING ELBOW | |
|---|---------|---|---|--|-------|---|-------|
|  | |  | |  | |  | |
| Code | tube | Code | Ø | Code | tube | Code | tube |
| 50015 00 N03 | 6 - 1/8 | 50610 00 31 X4 RO | 6 | 55140 00 002 | 4 - 6 | 55150 00 002 | 4 - 6 |
| 50015 00 N04 | 8 - 1/8 | 50610 00 31 X7 RO | 8 | 55140 00 005 | 6 - 6 | 55150 00 005 | 6 - 6 |
| - | - | - | - | 55140 00 007 | 8 - 8 | 55150 00 007 | 8 - 8 |