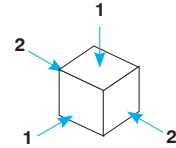
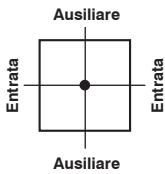
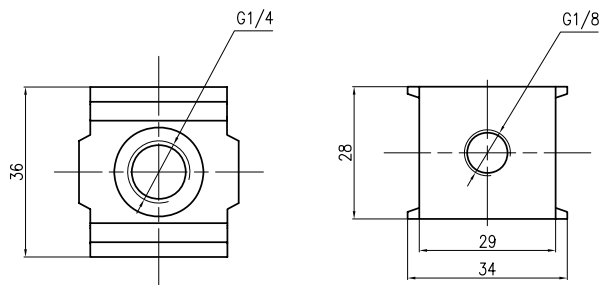


**Taglia 0 G1/8**



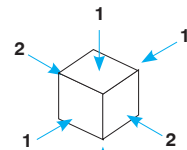
1 = ausiliari  
2 = ingresso - uscita

HZ0N08G Taglia 0	
Attacco filettato	G1/8
Pressione max ingresso <b>bar</b> - MPa - psi	10 - 1 - 145
Fluido	aria filtrata
Temperatura min/max °C	5 ÷ 60
Peso (kg)	0,065



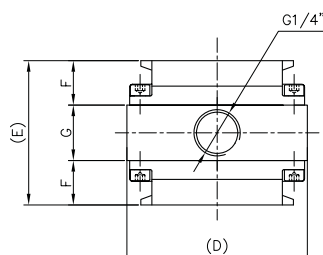
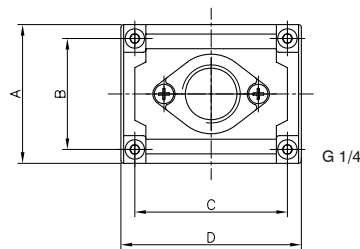
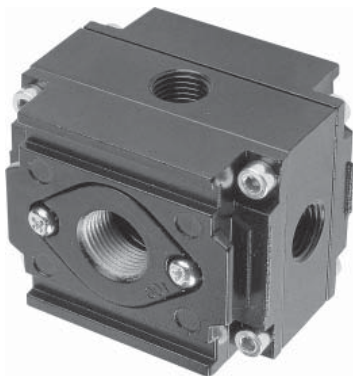
**Taglia 1 1/4 - 3/8 - 1/2**  
**Taglia 2 3/8 - 1/2 - 3/4**

Gli attacchi ausiliari presenti sulle 4 facce, sono G1/4.



1 = ausiliari  
2 = ingresso - uscita

	HZ1N... Taglia 1	HZ2N... Taglia 2
Attacco filettato	G1/4 - G3/8 - G1/2	G3/8 - G1/2 - G3/4
Pressione max ingresso <b>bar</b> - MPa - psi	10 - 1 - 145	
Fluido	aria filtrata	
Temperatura min/max °C	5 ÷ 60	
Peso (kg)	0,32	0,48



Dimensioni d'ingombro

	Taglia 1	Taglia 2
A	50	50
B	40	42
C	55	73
D	65	80
E	52	58
F	16	19
G	20	20