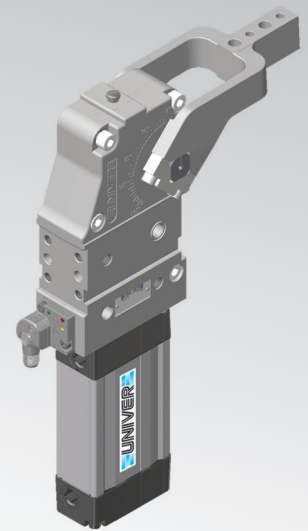


# UBP50

Unità di bloccaggio UNIVERSAL



U	B	P	5	0	O	E	K	
1	2	3	4	5	6	7		

1 Serie	2 Versione	3 Taglia
---------	------------	----------

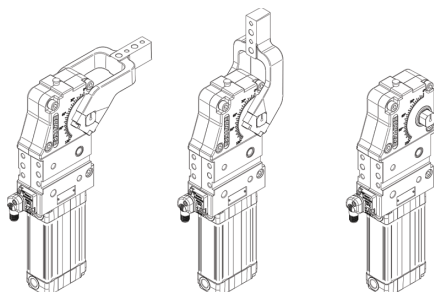
**UB** = Unità di bloccaggio UNIVERSAL con regolazione continua angolo d'apertura da: **0° a 135° Max**  
L'angolo di apertura può variare a seconda della posizione e della tipologia del pressore

**P** = Pneumatica standard

**50** = Ø 50 mm

4 Posizione pressore	5 Tipo di pressore	6 Sensore di posizione
----------------------	--------------------	------------------------

**V** = 90°    **O** = 180°    **N** = Senza pressore



**C** = Centrale, 15 mm offset  
**D** = Destro, 15 mm offset  
**S** = Sinistro, 15 mm offset  
**E** = Centrale, 45 mm offset  
**F** = Destro, 45 mm offset  
**L** = Sinistro, 45 mm offset

**X\*** = Centrale con fori maggiorati Ø 8 H7, 15 mm offset  
**Y\*** = Destro con fori maggiorati Ø 8 H7, 15 mm offset  
**Z\*** = Sinistro con fori maggiorati Ø 8 H7, 15 mm offset  
**T\*** = Centrale con fori maggiorati Ø 8 H7, 45 mm offset  
**U\*** = Destro con fori maggiorati Ø 8 H7, 45 mm offset  
**V\*** = Sinistro con fori maggiorati Ø 8 H7, 45 mm offset

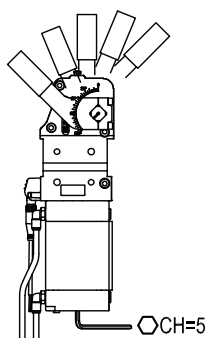
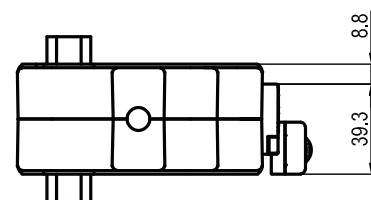
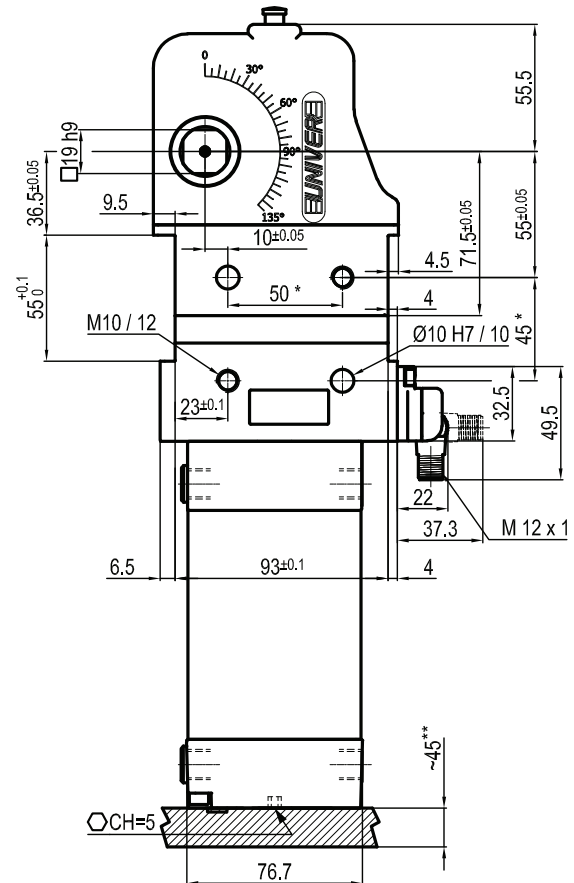
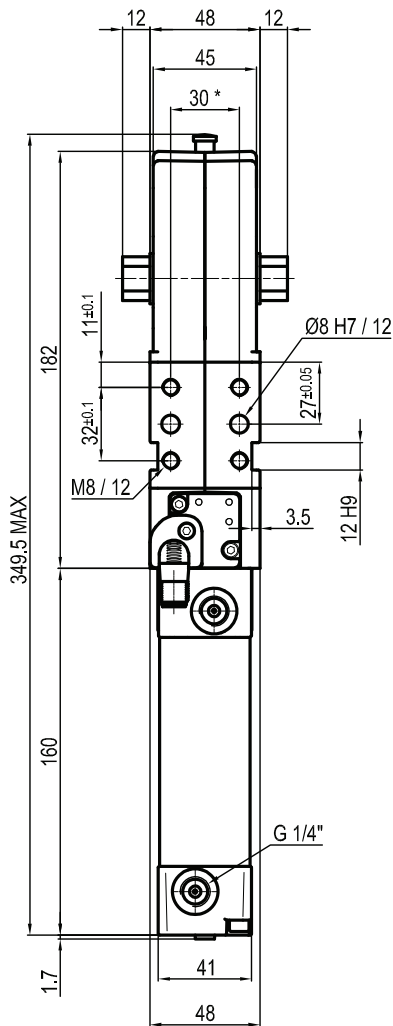
**N** = Senza pressore

**\*** = Disponibili su richiesta

**N** = Senza sensore (con piastra di chiusura)  
**K** = Sensore elettronico PNP (ottico) (DF-K)  
**D** = Sensore pneumatico

7 Materiale pressore
----------------------

**S** = Acciaio  
Se non specificato verrà fornita la versione in alluminio

**UBP50NNK**


Bore Ø	Holding moment	Clamping moment (0,5 MPa)	Weight (clamping arm not included)
50 mm	1250 Nm	280 Nm	2,7 Kg

 Min./Max. operating pressure: **0,4 / 0,6 MPa**

 Operating temperature: **5° ÷ 45° C**

 Opening angle: **adjustable**

Without arm

Electronic sensor with M12 swivel connector, from 0° to 90°

Supply voltage: 10 ÷ 30 Vdc

 IP code: **IP 65**

Pneumatic ports on both sides

\*: TOLERANCE BETWEEN DOWELS ± 0,02, BETWEEN SCREW HOLES ± 0,1

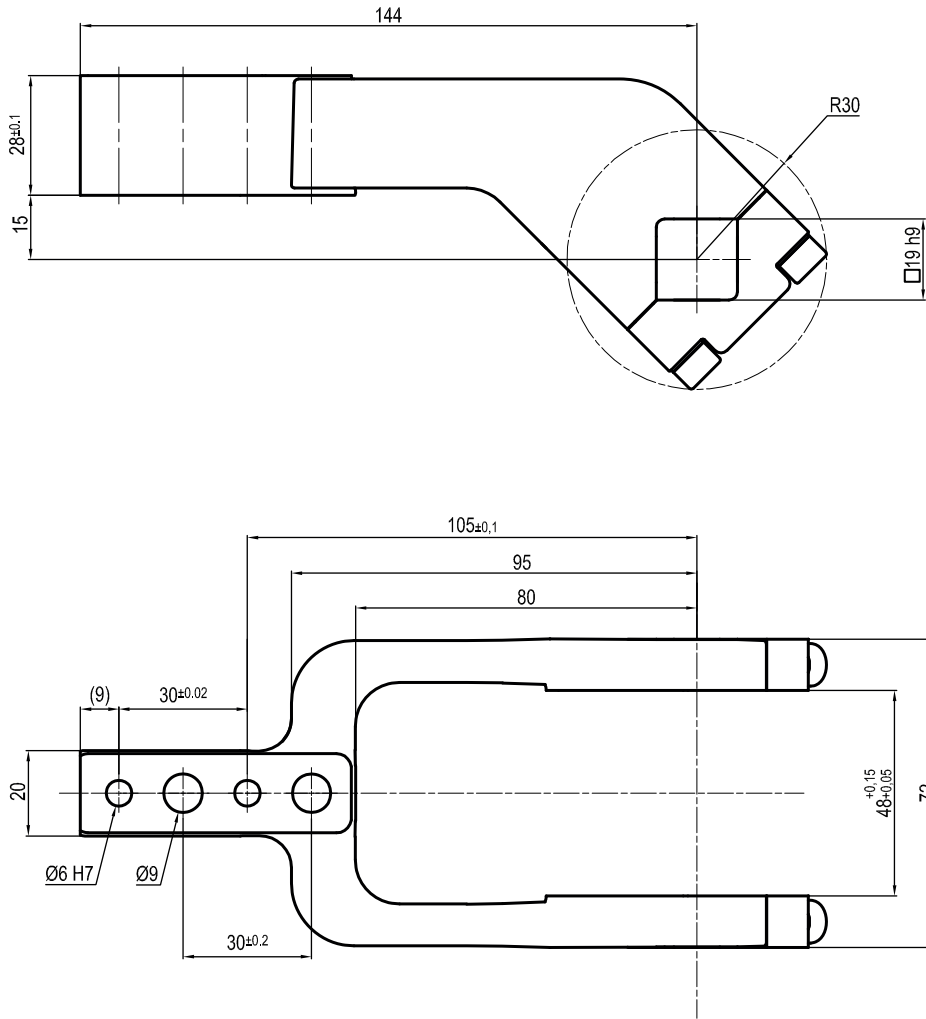
\*\*: AREA TO ACCESS ANGLE ADJUSTMENT

Subject to technical modifications without notice

Rev. 00 05.02.20

LKP00CL

□ 19 mm - offset 15 mm



Clamp size	Material	Weight
50/63 mm	Aluminium	0,4 Kg

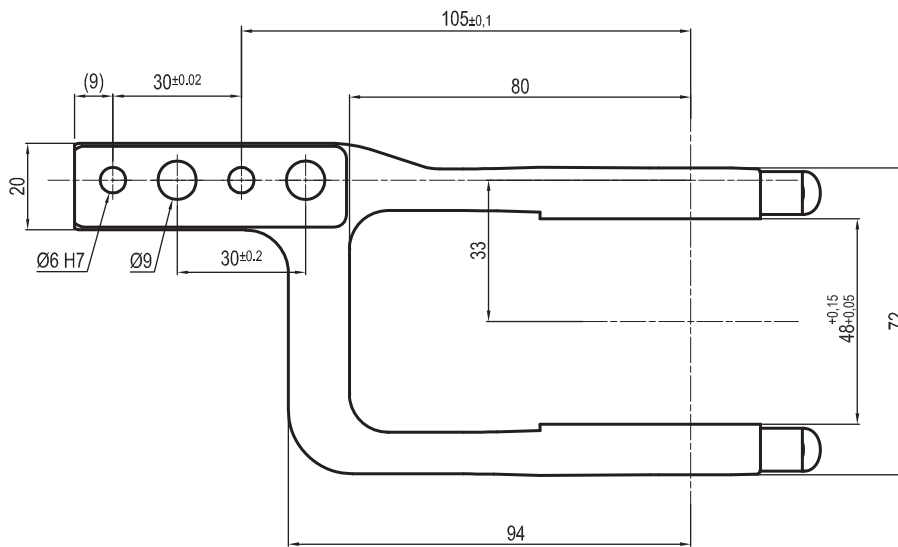
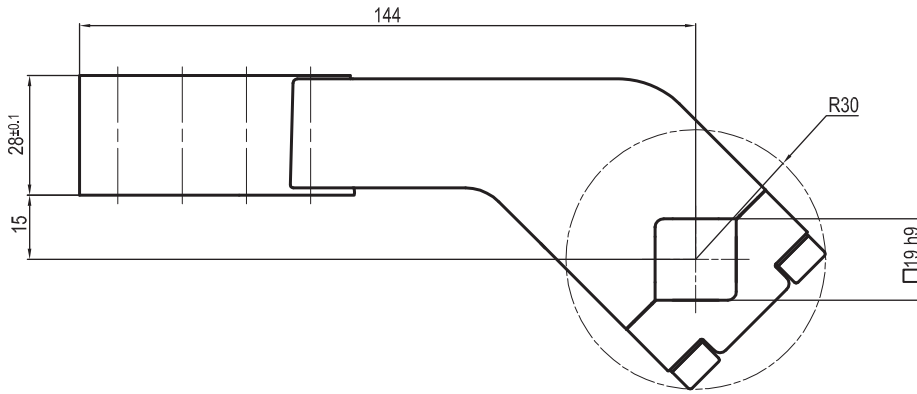
THE CLAMPING ARM INCLUDES THE NECESSARY SCREWS

Subject to technical modifications without notice

Rev. 01 09.02.16

LKP00DL

□ 19 mm - offset 15 mm



Clamp size	Material	Weight
50/63 mm	Aluminium	0,4 Kg

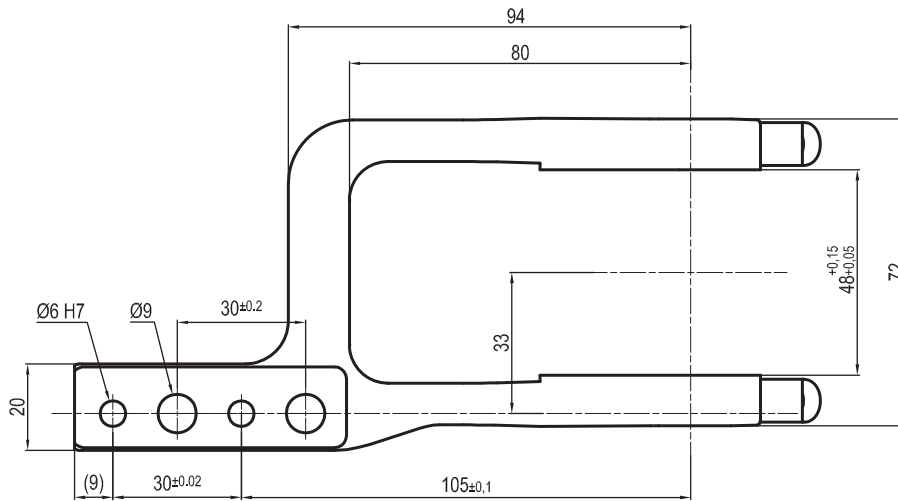
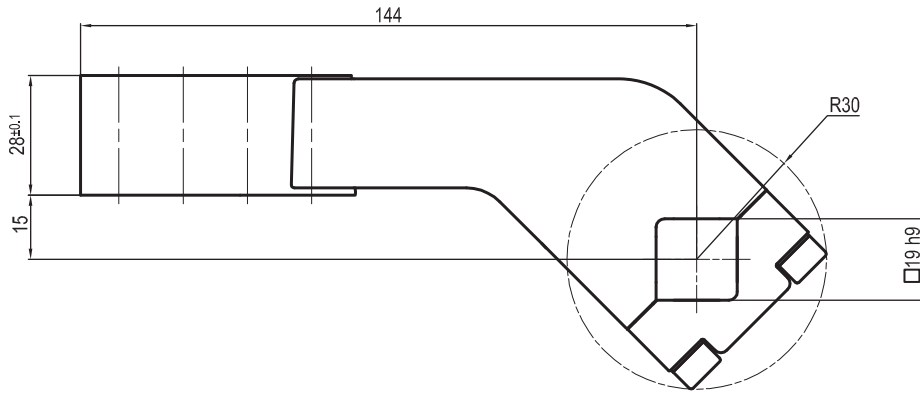
THE CLAMPING ARM INCLUDES THE NECESSARY SCREWS

Subject to technical modifications without notice

Rev. 02 14.07.16

LKP00SL

□ 19 mm - offset 15 mm



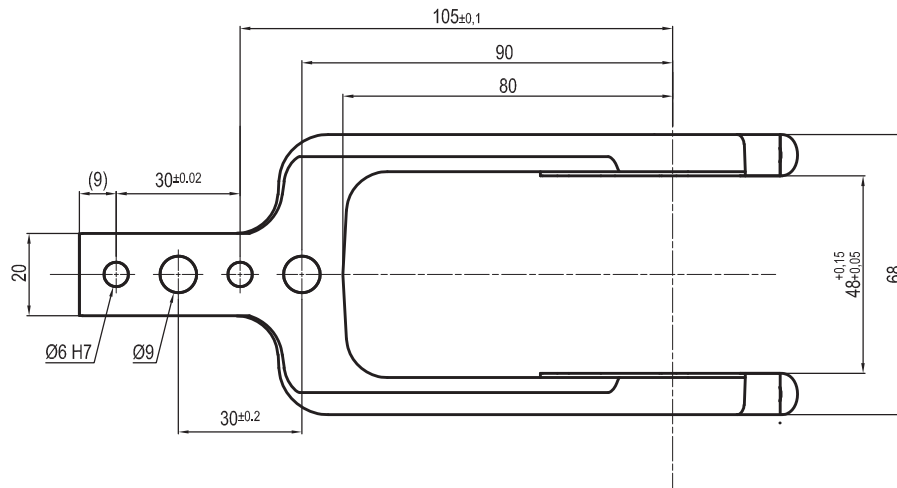
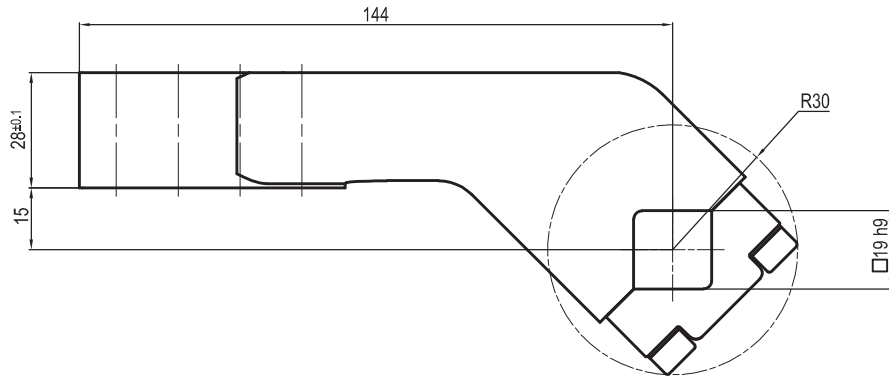
Clamp size	Material	Weight
50/63 mm	Aluminium	0,4 Kg

THE CLAMPING ARM INCLUDES THE NECESSARY SCREWS

Subject to technical modifications without notice

UP210151441G

□ 19 mm - offset 15 mm



Clamp size	Material	Weight
50/63 mm	Steel	0,8 Kg

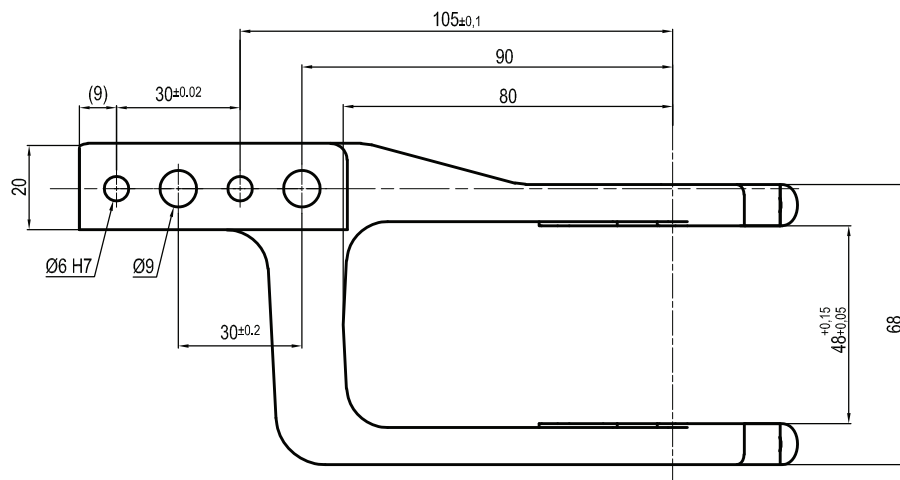
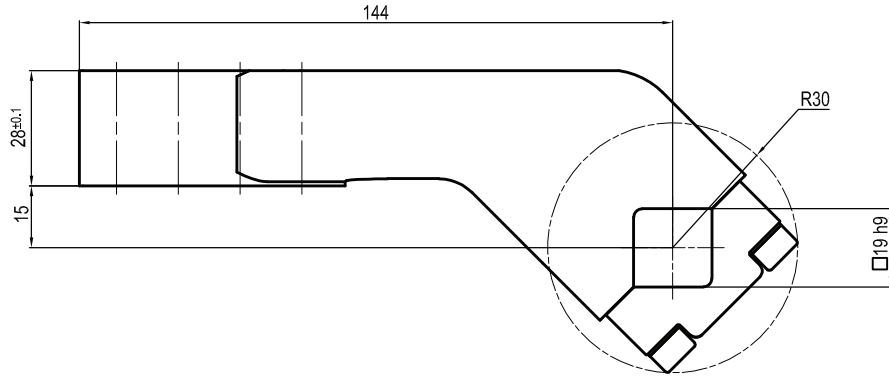
THE CLAMPING ARM INCLUDES THE NECESSARY SCREWS

Subject to technical modifications without notice

Rev. 01 15.01.16

UP210151442G

□ 19 mm - offset 15 mm



Clamp size	Material	Weight
50/63 mm	Steel	0,8 Kg

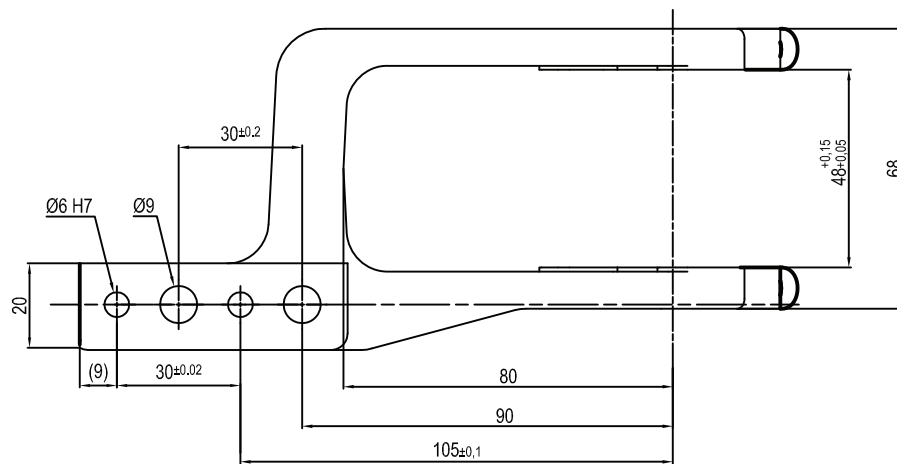
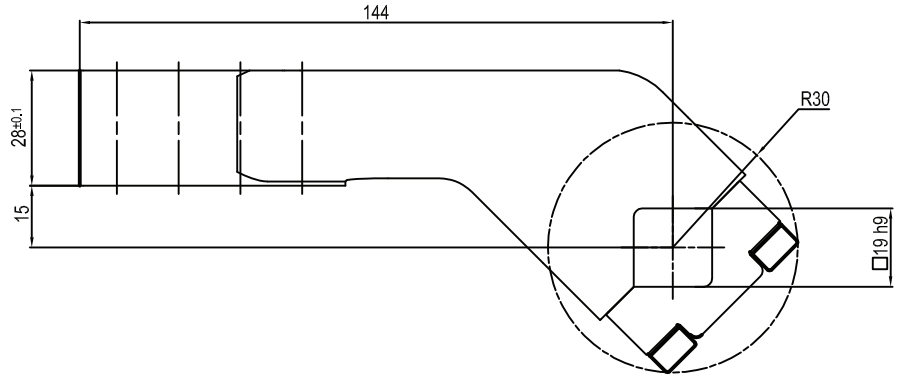
THE CLAMPING ARM INCLUDES THE NECESSARY SCREWS

Subject to technical modifications without notice

Rev. 01 15.01.16

UP210151443G

□ 19 mm - offset 15 mm



Clamp size	Material	Weight
50/63 mm	Steel	0,8 Kg

THE CLAMPING ARM INCLUDES THE NECESSARY SCREWS

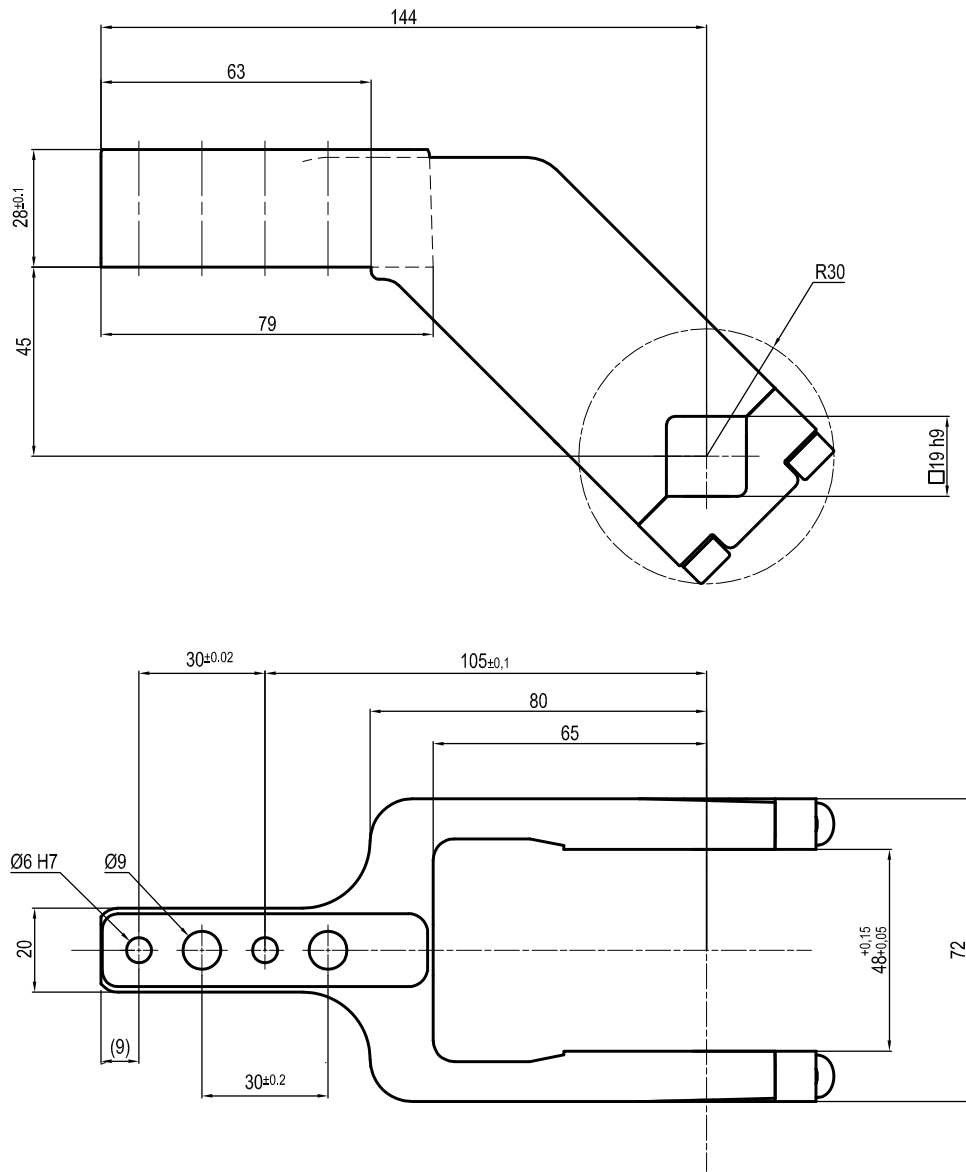
Subject to technical modifications without notice

Rev. 01 15.01.16



UKP5063E

□ 19 mm - offset 45 mm



Clamp size	Material	Weight
50/63 mm	Aluminium	0,45 Kg

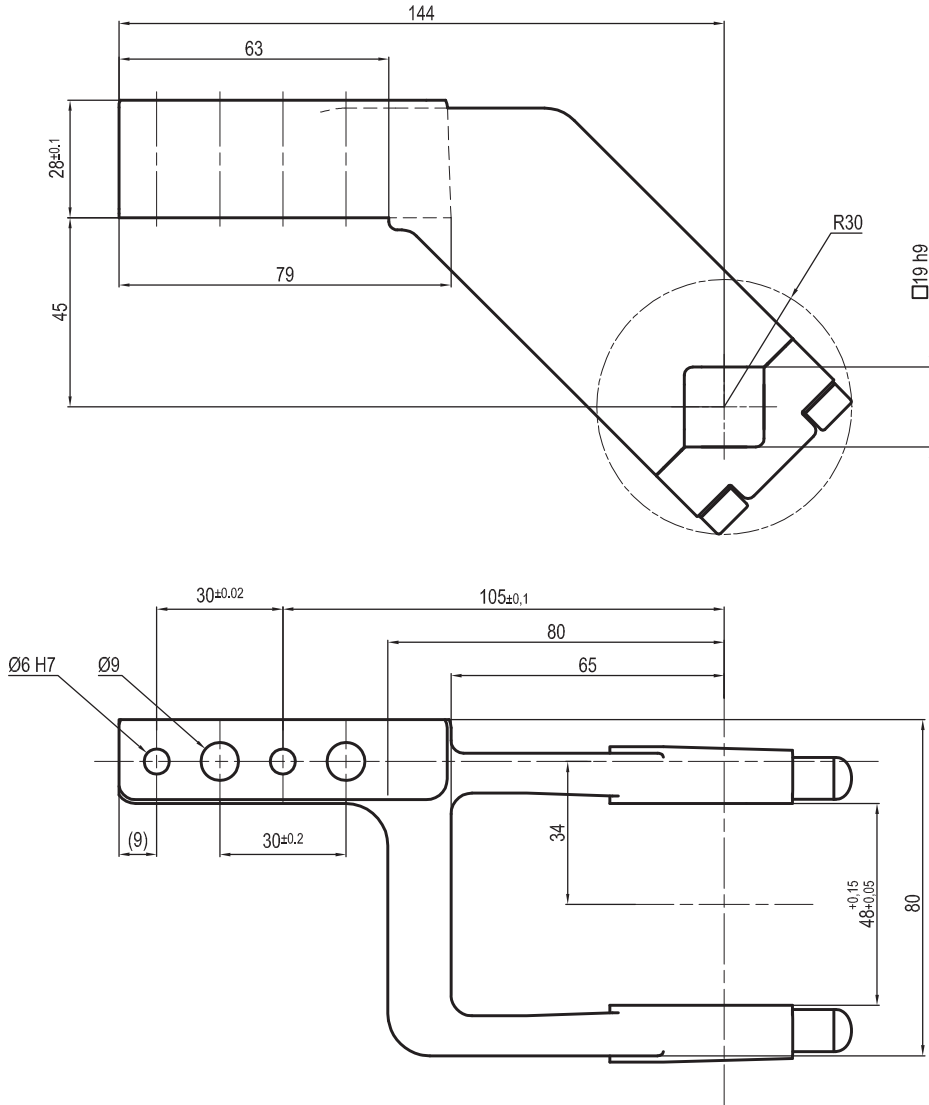
THE CLAMPING ARM INCLUDES THE NECESSARY SCREWS

Subject to technical modifications without notice

Rev. 01 08.02.16

UKP50F

□ 19 mm - offset 45 mm



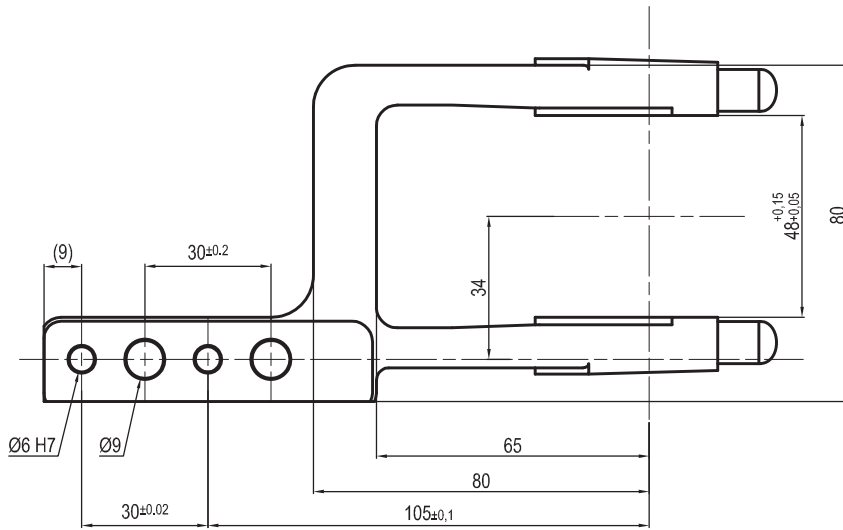
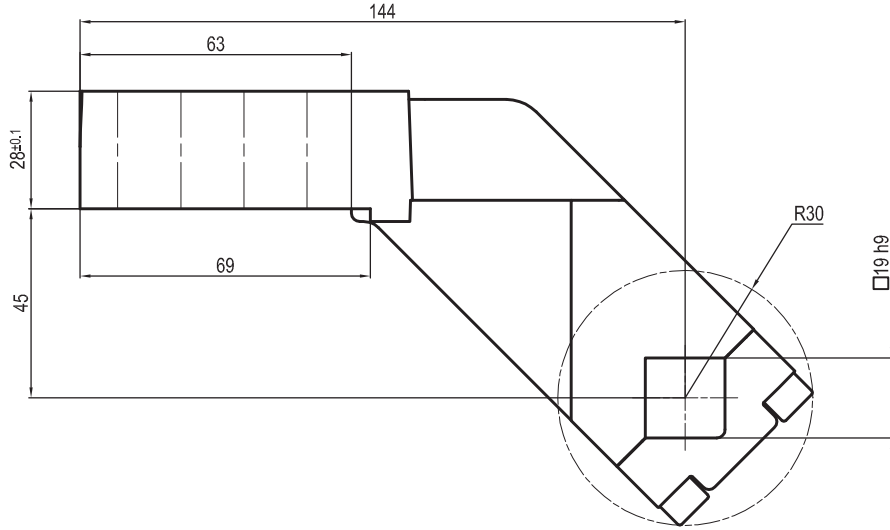
Clamp size	Material	Weight
50 mm	Aluminium	0,45 Kg

THE CLAMPING ARM INCLUDES THE NECESSARY SCREWS

Subject to technical modifications without notice

UKP50L

□ 19 mm - offset 45 mm



Clamp size	Material	Weight
50 mm	Aluminium	0,45 Kg

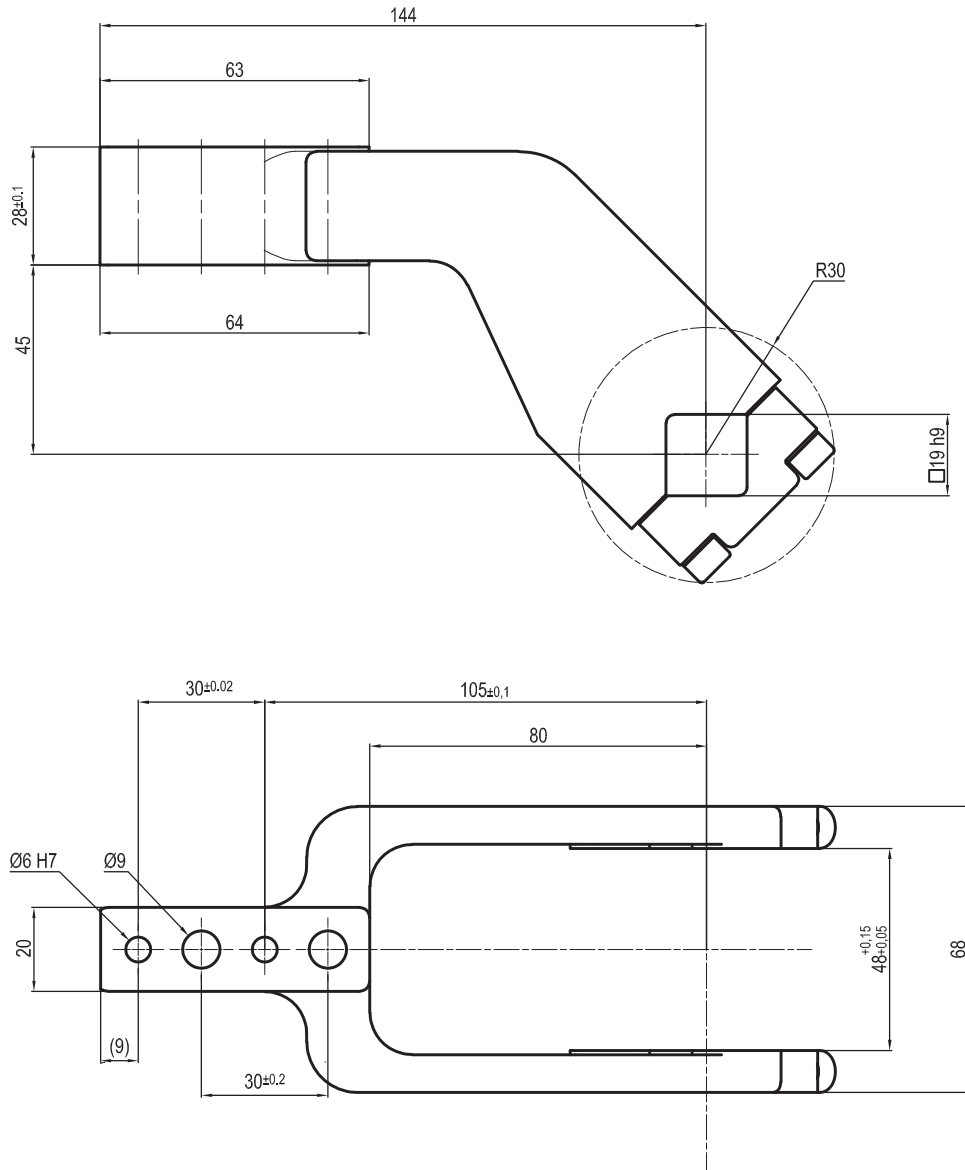
THE CLAMPING ARM INCLUDES THE NECESSARY SCREWS

Subject to technical modifications without notice

Rev. 01 15.07.16

UKP5063ES

□ 19 mm - offset 45 mm



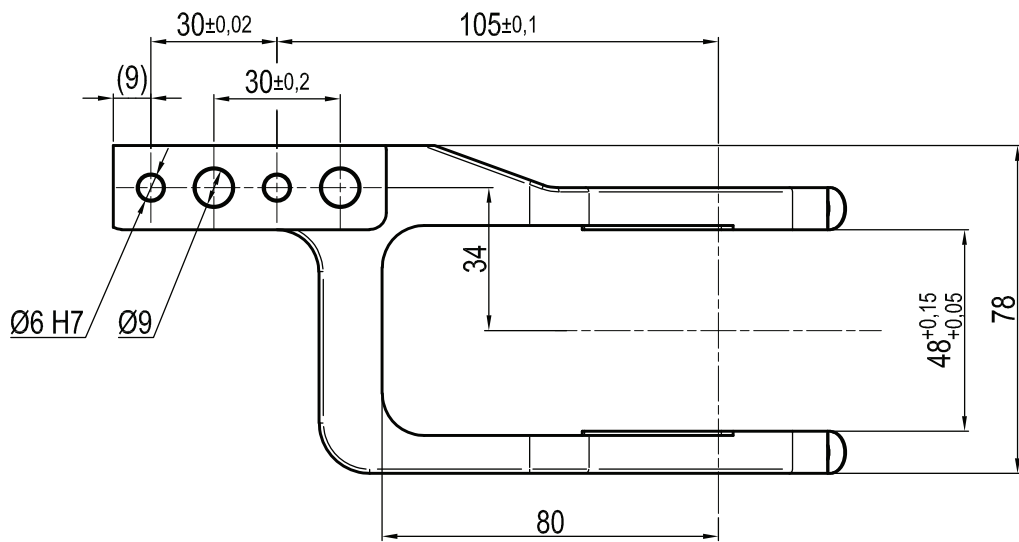
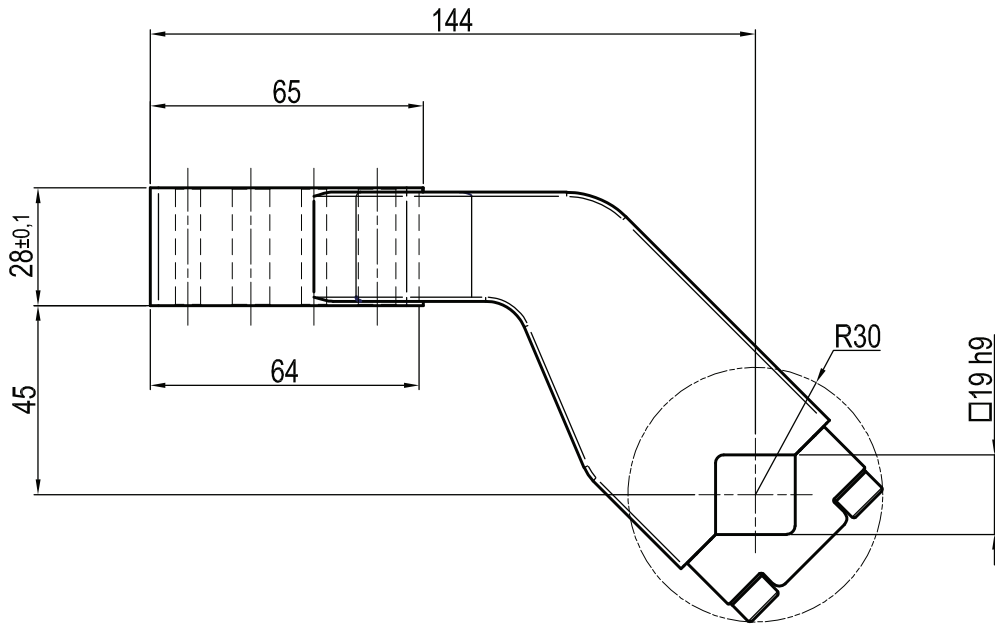
Clamp size	Material	Weight
50/63 mm	Steel	0,92 Kg

THE CLAMPING ARM INCLUDES THE NECESSARY SCREWS

Subject to technical modifications without notice

UKP50FS

□ 19 mm - offset 45 mm



Clamp size	Material	Weight
50 mm	Steel	1,16 Kg

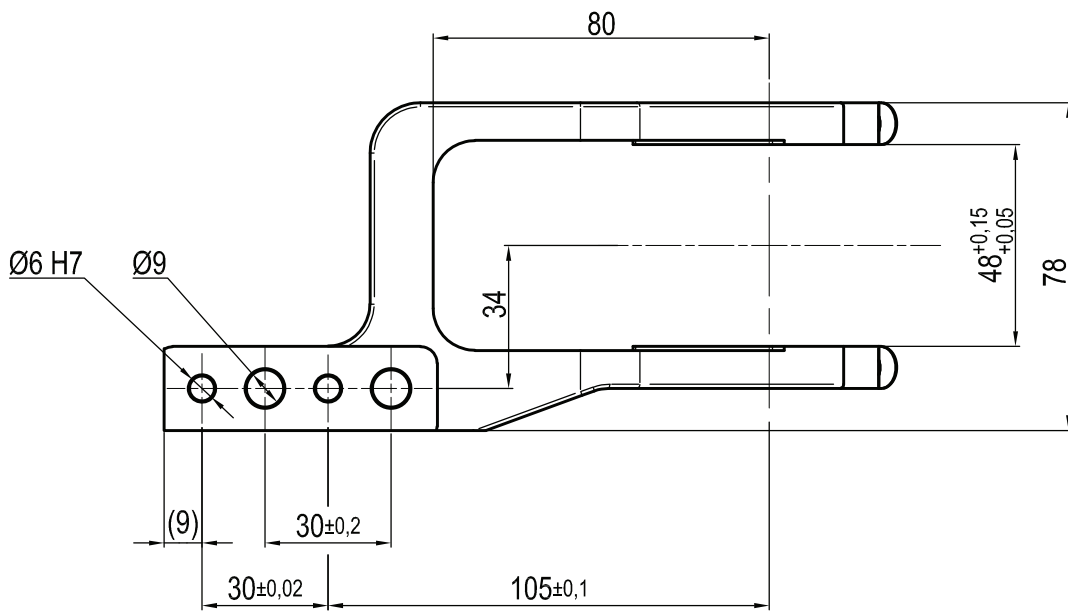
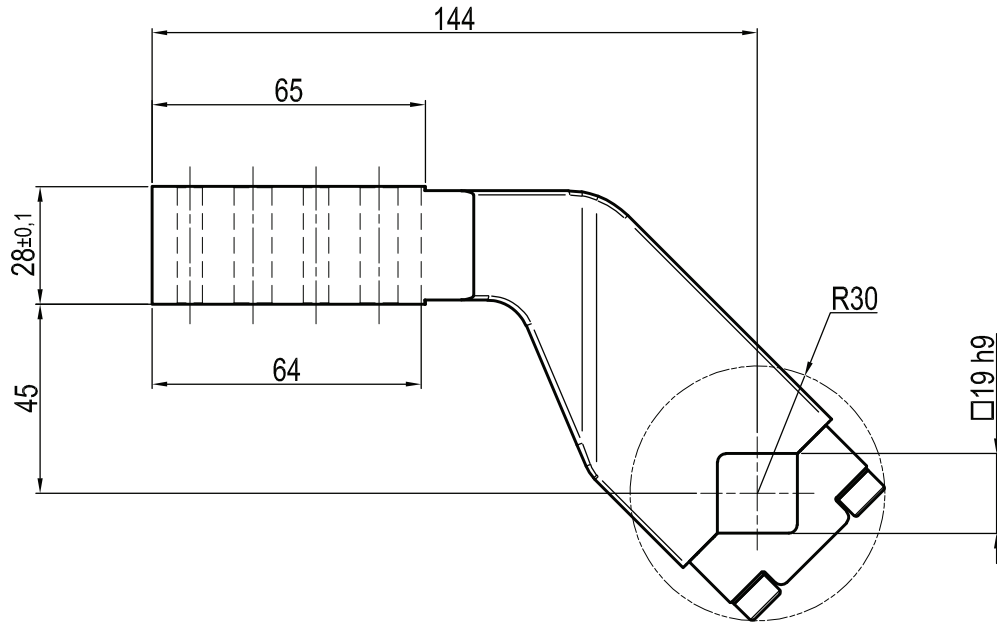
THE CLAMPING ARM INCLUDES THE NECESSARY SCREWS

Subject to technical modifications without notice

Rev. 00 16.07.20

UKP50LS

□ 19 mm - offset 45 mm



Clamp size	Material	Weight
50 mm	Steel	1,16 Kg

THE CLAMPING ARM INCLUDES THE NECESSARY SCREWS

Subject to technical modifications without notice

Rev. 00 16.07.20