

SINCE 1971
LEADER IN INDUSTRIAL AUTOMATION



Product range

Pneumatic Automation_

Cylinders
High-Tech
Valves
Air treatment
Accessories

Automotive_

Pneumatic power clamps
Electric power clamps
Pneumatic components for Automotive



■ UNIVER Headquarter

In the '70s Univer started its activity in the field of industrial automation with the production of pneumatic valves. In the following '80s and '90s the range of technologically advanced and original pneumatic components has allowed a continuous growth and development of the company. In the year 2000 the Automotive division was created and since then it has developed solutions for the automotive industry. Univer is now a partner of the most important automobile industries and their connected companies worldwide. The electronic division, as a support of the Pneumatic Automation and Automotive divisions, is specialized in the study, design and manufacturing of the electric and electronic devices integrated in the Univer products. The engineering of the products and of the processes, the production, the tests and customer service are attended to thanks to a severe quality standard. Since 1991 Univer is UNI EN ISO 90001 certified. The organization of the sales network is coordinated by the Headquarters of Univer S.p.A. in Milan. In Italy the commercial company Univer Service S.r.l. with its logistics centre guarantees a quick and efficient service to all 10 direct branch offices and to all the distributors in the country. The Univer group has 9 direct companies and a distribution network which covers the most important industrialized areas worldwide.



1970



- 1971** Foundation of UNIVER company
- 1973** Poppet valves for compressed air and vacuum



First valve series

1980



- 1980** Valves according to ISO 5599 (Industry Award)
- 1982** UNIVERSAL series valves
- 1986** Cylinders and mounting elements according to ISO 6431 (first cylinders on the market with extruded aluminium profile)
- 1988** Cylinders with antirotation piston and octagonal tube
Electrically actuated microvalves
Rodless cylinders (patented)
- 1989** Rotating cylinders (patented)
Short-stroke cylinders



AE valves



ISO 6431 K cylinders



Rodless cylinder series S1



ITALIA - Headquarter: UNIVER S.p.A.
UNIVER SERVICE S.r.l.

AUSTRALIA - UNIVER Pty Ltd
BRASIL - UNIVER do Brasil S/A
FINLAND - UNIVER OY
FRANCE - UNIVER FRANCE S.a.s.
GERMANY - UNIVER G.m.b.H.

SPAIN- UNIVER S.L. System Supplier Pneumatic
SWEDEN - UNIVER SWEDEN AB
SWITZERLAND- UNIVER AG
UNITED KINGDOM - UNIVER Manufacturing Company Ltd.

■ Research and development

■ Lab tests

1990

- 1991** 10 mm nanovalve
G6 - G7 - G8 series valves
- 1992** Slide units in extruded aluminium profile
- 1993** Cybrain programmable actuators (patented)
- 1997** Telescopic cylinders (patented)
- 1998** Locking units (patented)
- 1999** Compact cylinders with adjustable cushioning standard (patented)



10 mm nanovalve



Slide units



Telescopic cylinders

2000

- 2000** Combobox valves
- 2001** Pneumatic power clamps and retractable locating pin units (patented)
- 2002** Oval cylinders
- 2003** Electric cylinders (patented)
Electric power pivots (patented)
Electric power clamps and retractable locating pin units
- 2004** Valves according to ISO 15407/VDMA 24563
Serial communication control blocks
Pneumatic grippers (patented)
- 2005** Pneumatic power pivots (patented)
- 2006** 10 mm nanovalve 2nd generation
- 2007** COMPACT 10/15 mm valves



COMPACT valves



Pneumatic/electric clamping units

_PRODUCT NEWS

KL

ISO 15552 cylinder
 Ø 32÷125 mm



- ▣ New design of the tube for easy cleaning
- ▣ Grooves for recessed sensors and pneumatic connections on one side for easy installation
- ▣ Traditional Univer technology which guarantees resistance and reliability
- ▣ Dimensions according to International standards for a complete interchangeability

RM/RS

ISO 21287 compact cylinders
 Ø 80÷100 mm



- ▣ Further development of the compact cylinder series
 Ø 16 - 20 - 25 - 32 - 40 - 50 - 63
NEW Ø 80 - 100
- ▣ Pneumatic cushioning standard
- ▣ Magnetic version standard
- ▣ Standard version according to ISO 21287
- ▣ STRONG version (interaxes, centering diameters and rods according to ISO 15552)



JL

Guided compact cylinders



- ▣ Versions: slide bearing (JLS), ball bushing (JLV)
- ▣ Three mounting options: through holes from the top, threaded holes from the bottom and from the back
- ▣ Mechanical end-stroke cushioning
- ▣ Flush-mounted sensors on two sides
- ▣ Connections on two sides

B10

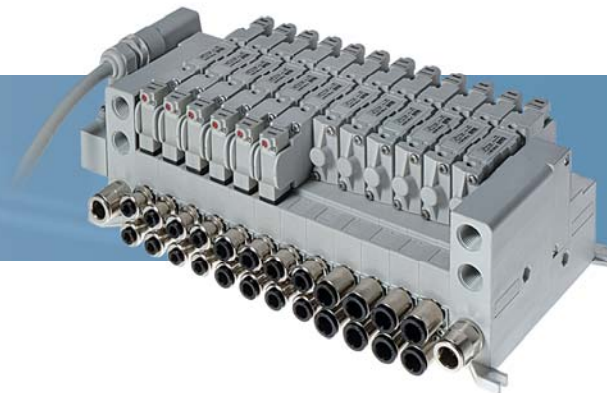
10 mm nanovalves



- ☑ Low input standard: 0,3 W
- ☑ High flow-rate: 30 NI/min
- ☑ Quick response time: 3 ms
- ☑ ISO 15218 interface
- ☑ 3/2 NC version
- Upon request:
- ☑ Bistable version
- ☑ 0,1 W version
- ☑ 50 NI/min flow-rate version

P10/P15

Compact solenoid valves threaded body and sub-base mounting



- ☑ P10: 10 mm body width - P15: 15 mm body width
- ☑ Low input: 0,3 W
- ☑ High flow-rate: 300 NI/min (P10), 800 NI/min (P15)
- ☑ Body with threaded connections and for sub-base mounting
- ☑ Modular sub-bases for single and multipolar electric connections

TC

Serial communication system



- ☑ Integrated solution
- One serial system for all manifolds:
 P10 - P15 - BD18 - BD26 series
- ☑ I/O modules (M8/M12)
- Modular system up to max 64 inputs + 64 outputs
- ☑ Removable configuration for additional multipole connection system manifolds
- ☑ Fieldbus protocols
- DeviceNet, AS-I, CANopen, InterBus, Profibus-DP



M

ISO 6432 microcylinders

Bore mm	8÷25
Stroke mm	0÷500
Type	double-acting, single-acting through rod, with cushioning

version for locking unit Ø 16÷25, magnetic from Ø 10÷25



K

ISO 15552 cylinders (ex ISO 6431)

Bore mm	32÷200
Stroke mm	0÷1000
Type	double-acting, single-acting through rod, tandem

version for locking unit, magnetic version upon request



KD

ISO 15552 cylinders (ex ISO 6431) tube with grooves for recessed sensors

Bore mm	32÷125
Stroke mm	0÷1000
Type	double-acting, single-acting through rod, tandem

version for locking unit, magnetic version as standard



KL

NEW

ISO 15552 cylinders - NEW DESIGN grooves for recessed sensors and pneumatic connection on one side

Bore mm	32÷125
Stroke mm	0÷1000
Type	double-acting, single-acting through rod, tandem

version for locking unit, magnetic version as standard

CYLINDERS_



RP/RM

UNITOP (RP) ISO 21287 (RM) compact cylinders

Bore mm	RP=16÷63 RM=16÷100
Stroke mm	0÷500
Type	double-acting, single-acting through rod, tandem

magnetic version and cushioning as standard available with: hollow rod, antirotation rod, long piston



RO/RN

UNITOP (RO) ISO 21287 (RN) compact cylinders with octagonal tube

Bore mm	16÷63
Stroke mm	0÷500
Type	double-acting, single-acting through rod, tandem

magnetic version and cushioning as standard available with: hollow rod, long piston



RS

STRONG compact cylinders - centering diameters, interaxes and piston rods according to ISO 15552

Bore mm	32÷100
Stroke mm	0÷800
Type	double-acting, single-acting through rod, tandem

magnetic version and cushioning as standard available with: hollow piston rod, antirotation piston rod, version for locking unit, long piston

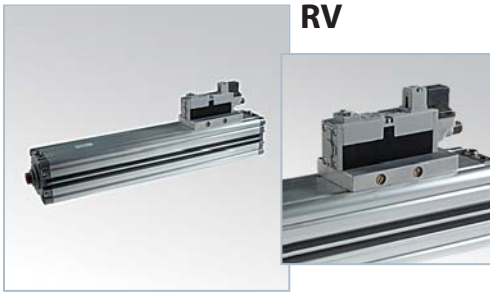


RQ

STRONG compact cylinders - octagonal tube centering diameters, interaxes and piston rods according to ISO 15552

Bore mm	32÷63
Stroke mm	0÷800
Type	double-acting, single-acting through rod, tandem

magnetic version and cushioning as standard available with: hollow rod, version for locking unit, long piston


RV

▣ **STRONG cylinders with integrated valve**

Bore mm	32÷63
Stroke mm	min 125
Type	double-acting, through rod
<input type="checkbox"/>	
Ø 32-40-50 BD 18 mm 24 V DC series Ø 63 BD 26 mm 24 V DC series M12 electric connection	


R

▣ **Rotating cylinders**

Bore mm	32÷125						
Rotation angles	90°-180°-270°-360°						
Type	male and female pinion with or without adjustment						
<input type="checkbox"/>							
theoretical torque at 6 bar							
Ø Cylinder	32	40	50	63	80	100	125
Mt (Nm)	7,2	13,5	23,4	43,8	94,2	159	306


W

▣ **Short stroke cylinders**

Bore mm	12÷100
Stroke mm	0÷100
Type	double-acting, single-acting through rod, tandem
<input type="checkbox"/>	
available with: hollow piston rod, antirotation	


OV

▣ **Oval cylinders**

Bore mm	18÷80
Stroke mm	0÷320
Type	double-acting, through rod
<input type="checkbox"/>	
magnetic version and cushioning as standard available with: hollow piston rod	


**KF-KDF
MF-RPF**

▣ **Mounting accessories**

Available on all cylinders series Mounting accessories for cylinder and piston rod	
<input type="checkbox"/>	
original UNIVER	


DF

▣ **Magnetic sensors**

Type	reed - electronic
Cable	3/5 mt. M8 - M12 connections
Mounting	from the top in T-shaped recessed grooves
<input type="checkbox"/>	
cylinder series: M - KD - KL - RP - RM - RO - RN - RQ - RS - OV - S1 Ø 16 - RT - NFZ	


DH

▣ **Magnetic sensors**

Type	reed - electronic
Cable	3/5 mt. M8 - M12 connections
Mounting	bracket
<input type="checkbox"/>	
cylinder series: M - KD - W - S1	





S1

▪ Rodless cylinders

Bore mm	16÷50
Stroke mm	max 6000
Type	standard carriage, medium, long

☑ various supply options of the cylinder end-caps
high translation speed 1-3 m/s



S5

▪ Rodless cylinders with integrated guides
sliding guide in tecnopolymer

Bore mm	25÷50
Stroke mm	max 6000
Type	standard carriage, medium long

☑ flexible slide system
high translation speed 0,2-1,5 m/s
upon request locking unit



VL1

▪ Rodless cylinders with integrated guides 90°
slide on ball bearings

Bore mm	25÷50
Stroke mm	max 6000
Type	standard carriage, medium long

☑ rigid slide system heavy, high precision series
translation speed 0,2-2 m/s
upon request locking unit



RT

▪ Telescopic cylinders

Bore mm	25÷63
Stroke mm	2 stages= max 1200, 3 stages= max 1800
Type	2 stages, 3 stages

☑ standard supplied: non-rotating piston rod, elastic bumpers,
flange, magnetic piston 1st stage, ISO interaxes

HIGH-TECH_



NFZ

▪ Pneumatic actuators with integrated safety
locking system

Bore mm	32÷63
Stroke mm	(Ø 32) 350 - (Ø 40) 450 - (Ø 50) 600 - (Ø 63) 750
Type	magnetic version standard

☑ axial locking system integrated in the cylinder
high repeatability and intervention speed
rod holding force ≥ 3 times the thrust force of the cylinder at 6 bar



NQZ

▪ Pneumatic actuator with integrated
measuring detector

Bore mm	32÷63
Stroke mm	(Ø 32) 350 - (Ø 40) 450 - (Ø 50) 600 - (Ø 63) 750
Type	magnetic version standard

☑ digital axial detector integrated in the cylinder
repeatability ± 0,02 mm
M12 Encoder connector



NTZ

▪ Pneumatic actuators with integrated measuring
detector and safety locking system

Bore mm	32÷63
Stroke mm	(Ø 32) 350 - (Ø 40) 450 - (Ø 50) 600 - (Ø 63) 750
Type	magnetic version standard

☑ combination of NFZ and NQZ versions
repeatability ± 0,3 mm

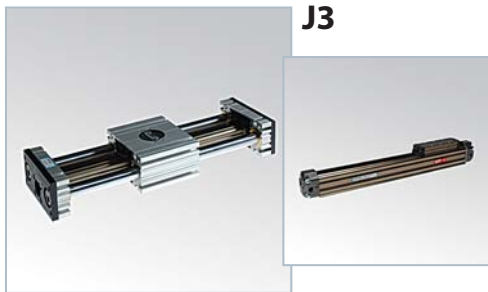


J1

▪ Slide units for ISO 6432 M series microcylinders
and ISO 15552 K/KD/KL cylinders series

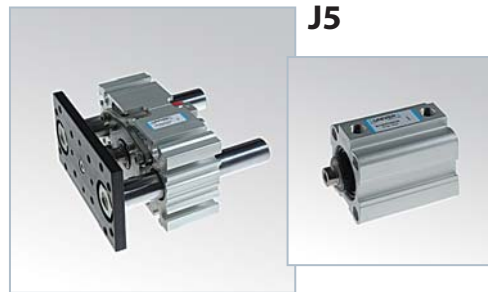
Bore mm	16÷100
Stroke mm	M series= max 500 K... series= max 1000
Type	protruding piston rods with short, medium, long carriage, protected cylinder, central mounting, semiexternal or protected cylinder

☑ possibility to integrate locking unit


J3

Slide unit for S1 series rodless cylinders

Bore mm	25÷50
Stroke mm	standard max 800
Type	protected carriage standard or long version
<input type="checkbox"/> possibility to integrate locking unit	


J5

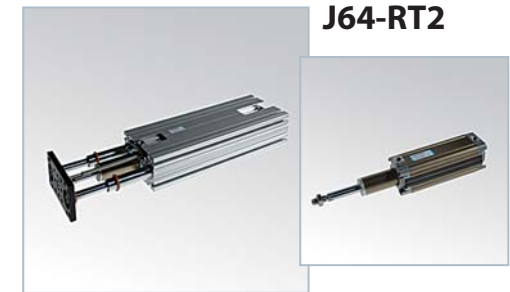
Slide unit for W series short-stroke cylinders

Bore mm	20÷80
Stroke mm	5÷75
Type	protruding piston rod, protected cylinder version with two plates


J64-RS

Slide unit for STRONG compact cylinders

Bore mm	32÷63
Stroke mm	15÷800
Type	protected cylinder version with two plates


J64-RT2

Slide unit for RT2 series telescopic cylinders

Bore mm	32÷63
Stroke mm	120÷1200
Type	protected cylinder 2 stages


JL

Guided compact cylinders

Bore mm	12÷63
Stroke mm	10÷200
Type	JLS=slide bearings JLV=ball bushing

reduced overall dimensions, antirotation, mounting on 3 sides, connections on 2 sides, flush-mounted sensors, mechanical end-stroke bumpers


L6

Locking unit for rodless cylinders
Ø 25÷50 mm

Bore mm	25÷50
Rodless cylinder	S5-VL1


L1

Locking unit for Ø 16÷125 mm cylinders and for
Ø 6÷32 mm piston rods

Cylinder bore mm	16÷125
Piston rod bore mm	6÷32
Cylinders	(ISO 6432) M series (ISO 15552) K, KD, KL, RS series

Ø Cylinder (mm)	16	20	25	32	40	50	63	80	100	125	160	200
Ø Piston rod (mm)	6	8	10	12	16	20	20	25	25	32	40	40
Static locking force (N)	200	314	490	800	1260	2000	3100	5000	7850	12300	20600	30900


NFZ 160/200

ISO 15552 Ø 160-200 mm cylinders
with integrated locking unit

Cylinder bore mm	160-200
Stroke mm	6÷32



B

10 mm nanovalve

Functions	3/2 NC - 3/2 NO
Flow rate NI/min	9÷15
Voltage V DC (1,2 W)	12-24
V AC	24

replaceable coil (version available with LED)
versions: in line connector, 90° connector, loose cables



B10

ISO 15218 10 mm nanovalve
high flow-rate, low input

NEW

Functions	3/2 NC
Flow rate NI/min	30
Voltage V DC (0,3 W)	24 (LED standard)

versions: 12 V DC (upon request)
flow rate 50 NI/min
bistable
low input 0,1 W



A

15 mm microvalve

Functions	2/2 - 3/2 NC/NO
Flow rate NI/min	26÷38
Voltage V DC (1,5÷2,5 W)	12-24-48-110
V AC (2,3 VA)	12-24-48-110-230

replaceable coil (version available with LED)
versions: in line connector, 90° connector, loose cables
Faston
single, manifold sub-base, multipolar connection



AA

Miniature electropilots U1

Functions	2/2 - 3/2 NC/NO
Flow rate NI/min	29÷80
Voltage V DC (3,5 W)	12-24-48-110
V AC (5 VA)	12-24-48-110-230

replaceable coil, single/manifold sub-base
versions: on sub-base and in line M5, G1/8, CNOMO

VALVES_



AB

Miniature electropilots U2

Functions	2/2 - 3/2 NC/NO
Flow rate NI/min	92÷210
Voltage V DC (11 W)	12-24-48-110
V AC (10 VA)	12-24-48-110-230

replaceable coil, single/manifold sub-base
versions: on sub-base and in line, M5, G1/8, CNOMO



AC

MIXED G1/8 - G1/4 - G1/2 threaded valves

Functions	5/2
Flow rate NI/min	G1/8=1080 G1/4=1600 G1/2=4600
Voltage V DC (3,5 W)	12-24-48-110
V AC (5 VA)	12-24-48-110-230

replaceable coil, modular sub-bases G1/8, G1/4
control: electric, pneumatic, manual, mechanical



AC-N

NAMUR threaded valves

Functions	3/2, 5/2
Flow rate NI/min	1200
Voltage V DC (3,5 W)	12-24-48-110
V AC (5 VA)	12-24-48-110-230

replaceable coil,
control: electric, pneumatic

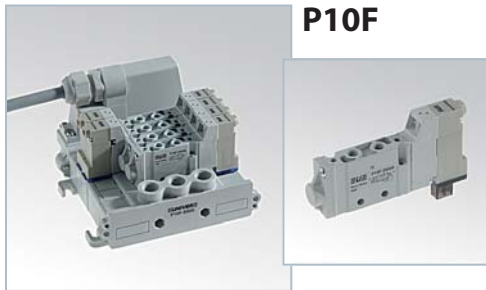


CL/CM

UNIVERSAL G1/8 - G1/4 threaded valves

Functions	3/2 - 5/2 - 5/3
Flow rate NI/min	G1/8=890 G1/4=1480
Voltage V DC (3,5 W)	12-24-48-110
V AC (5 VA)	12-24-48-110-230

replaceable coil,
control: electric, pneumatic, manual, mechanical
modular sub-bases

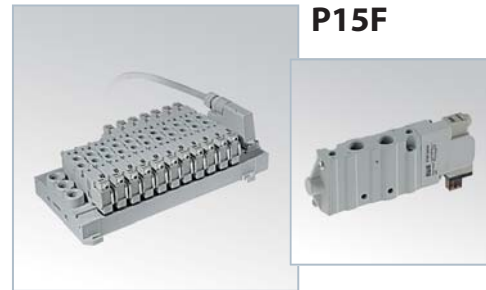


P10F

COMPACT 10 mm threaded connections M5 multipolar electric connection

Functions	5/2 - 5/3 - 3/2+3/2
Flow rate NI/min	310
Voltage V DC (0,3 W)	24

indirect electropneumatic control
single and double modular sub-base
24 coils configuration

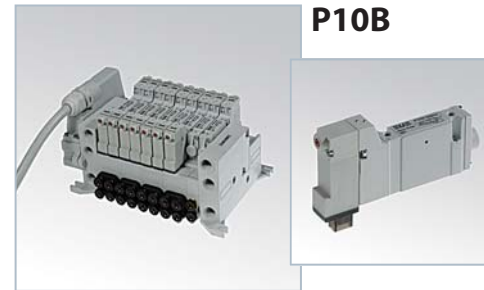


P15F

COMPACT 15 mm threaded connections G1/8 multipolar electric connection

Functions	5/2 - 5/3 - 3/2+3/2
Flow rate NI/min	800
Voltage V DC (0,3 W)	24

indirect electropneumatic control
single and double modular sub-base
24/32 coils configuration

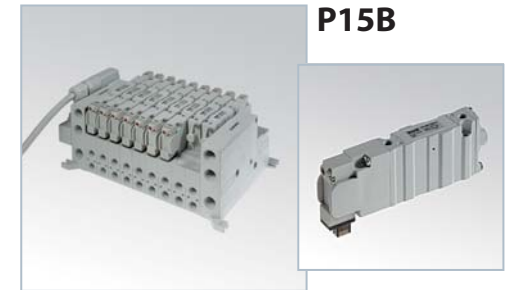


P10B

COMPACT 10 mm for sub-base multipolar electric connection

Functions	5/2 - 5/3 - 3/2+3/2
Flow rate NI/min	310
Voltage V DC (0,3 W)	24

indirect electropneumatic control
single and double modular sub-base
M5, M7 connections, tube Ø 4 mm
24 coils configuration

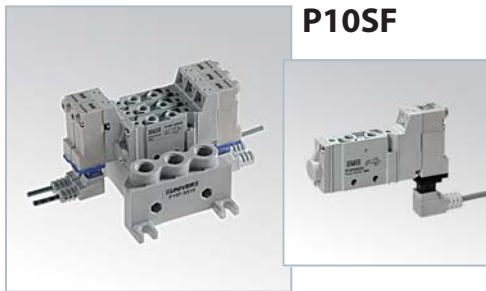


P15B

COMPACT 15 mm for sub-base multipolar electric connection

Functions	5/2 - 5/3 - 3/2+3/2
Flow rate NI/min	800
Voltage V DC (0,3 W)	24

indirect electropneumatic control
single and double modular sub-base
G1/8 connections, tube Ø 4-6-8 mm
24/32 coils configuration

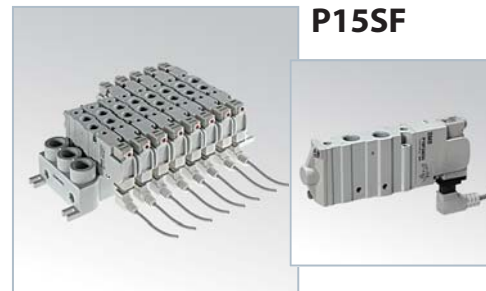


P10SF

COMPACT 10 mm threaded connections M5 external electric connector

Functions	5/2 - 5/3 - 3/2+3/2
Flow rate NI/min	310
Voltage V DC (0,3 W)	24

indirect electropneumatic control
(pneumatic control version)
single and double modular sub-base



P15SF

COMPACT 15 mm threaded connections G1/8 external electric connector

Functions	5/2 - 5/3 - 3/2+3/2
Flow rate NI/min	800
Voltage V DC (0,3 W)	24

indirect electropneumatic control
(pneumatic control version)
single and and double modular sub-base

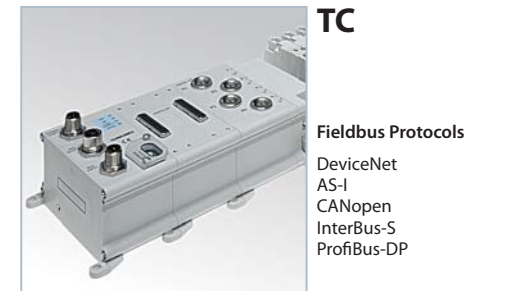


P15D

COMPACT 15 mm threaded connections G1/8 electric connector 15 mm

Functions	5/2 - 5/3 - 3/2+3/2
Flow rate NI/min	800
Voltage V DC (0,3 W)	24

indirect electropneumatic control
(pneumatic control version)
version with miniature connector 15 mm
suitable for P15SF sub-base

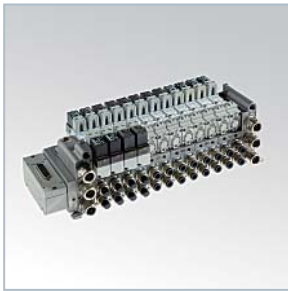


TC

Fieldbus Protocols
DeviceNet
AS-I
CANopen
InterBus-S
Profibus-DP

Serial communication system

Controlled devices	Valves manifold - Digital Input M12/M8 - Output M12
Management capacity	Max 64 Inputs + 64 Outputs
Integrated configuration	COMPACT P10 - P15 (suitable for BD VDMA series 18-26 mm)
Distributed configuration	Remote expansion modules for valve manifolds with plug-in sub D 25

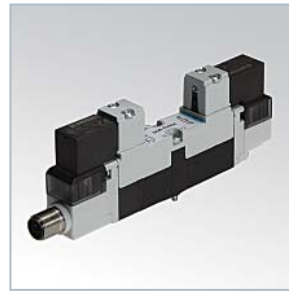


BDA/BDE

ISO 15407-1/2 VDMA 24563
valves and solenoid valves - 18/26 mm

Functions	5/2 - 5/3 - 3/2+3/2	
Flow-rate NI/min	18 mm	26 mm
ISO/VDMA standard	620	1250
oversize	800	1700
Voltage V DC (1,5 W)	BDA	12-24-48-110
	BDE	24
V AC (2,3 VA) BDA	12-24-48-110-230	

modular sub-bases, single and multipolar electric connection



BDB

ISO 15407-1 VDMA 24563
solenoid valves - M12 connector

Functions	5/2 - 5/3 - 3/2+3/2	
Flow-rate NI/min	18 mm	26 mm
ISO/VDMA standard	620	1250
oversize	800	1700
Voltage V DC	24	24

modular sub-bases, single electric connection M12



BD/TC/TX

Fieldbus Protocols

DeviceNet
AS-I
CANopen
InterBus-S
Profibus-DP

Serial communication system

Controlled devices
Valve manifolds - M12/M8 Digital Input - M12 Output
Management capacity
Max 64 Inputs + 64 Outputs
Integrated configuration
BD VDMA 18-26 mm series
Remotable configuration
Remote expansion modules for valve manifolds with plug-in sub D 25



PSP/PSC/PSR

ComboBox valves
(valve body with integrated sub-base)

Functions	5/2 - 5/3 - 3/2+3/2
Flow-rate NI/min	830
Voltage V DC (1,35W)	24
upon request	12

24 V DC coil with connector and LED for integrated electric connection
PSP=integrated electric connection PSC=single connection
PSR=pneumatic

VALVES_



BE

ISO 5599/1 valves

Functions	5/2 - 5/3	
Flow rates NI/min	size 1=1480	size 2=2300
	size 3= 4200	size 4=6600
Voltage V DC (2,5 W)	12-24	
	V AC (3,5 VA) 24-110-230	

versions: mixed and spool system
electric, pneumatic, indirect control
single and modular sub-bases BF series



BE12

ISO 5599/1 valves M12 connector

Functions	5/2 - 5/3	
Flow rates NI/min	size 1=1480	size 2=2300
	size 3= 4200	size 3=4200
Voltage V DC (1,5 W)	24	
	M12 connector	

versions: mixed and spool system
electric control, indirect



AE

Light series valves for sub-base ISO 5599

Functions	5/2	
Flow rates NI/min	size 1=1480	size 2=2300
Voltage V DC (2,5 W)	12-24-48-110	
	V AC (3,5 VA) 12-24-48-110-230	

electric, pneumatic, indirect control
single and modular sub-bases BF series

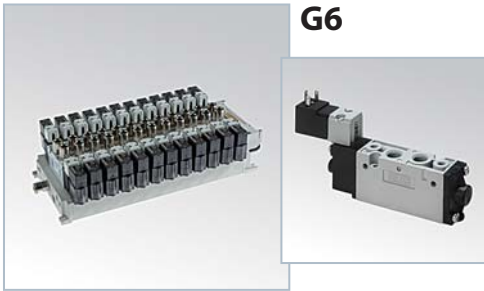


CH

2/2 - 3/2 - G1/8 poppet valves

Functions	2/2 - 3/2
Flow rates NI/min	600
Control	mechanical, manual

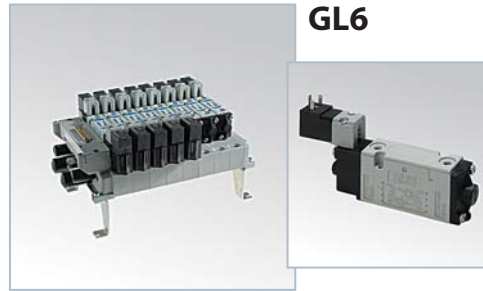
high flow-rate and switching speed


G6

20 mm valves and solenoid valves threaded connections G1/8

Functions	5/2 - 5/3 - 3/2+3/2
Flow-rate NI/min	770
Voltage V DC (1,5 W)	12-24-48-110
V AC (2,3 VA)	12-24-48-110-230

24 V DC coil with connector and LED for integrated electric version
 electric, pneumatic, indirect control
 modular sub-bases, single and multipolar electric connection


GL6

20 mm valves and solenoid valves for sub-base

Functions	5/2 - 5/3 - 3/2+3/2
Flow-rate NI/min	770
Voltage V DC (1,5W)	12-24-48-110
V AC (2,3 VA)	12-24-48-110-230

24 V DC coil with connector and LED for integrated electric version
 electric, pneumatic, indirect control
 modular sub-bases, single and multipolar electric connection


G7

26 mm valves and solenoid valves threaded connections G1/8

Functions	5/2 - 5/3
Flow-rate NI/min	860
Voltage V DC (3,5W)	12-24-48-110
V AC (5 VA)	12-24-48-110-230

replaceable coil
 electric, pneumatic, indirect control
 multiple sub-bases in aluminium extruded profile


E-15

15 mm manual and mechanical control valves threaded connections M5

Functions	5/2
Flow-rate NI/min	150
Control	mechanical, manual

pneumatic and mechanical actuators
 panel actuators


AF

Poppet valves for compressed air G1/8 - G1 1/2

Functions	2/2 - 3/2 NC/NO
Flow-rate NI/min	G1/8=580 G1/4=1100 G3/8=1500 G1/2=5400 G3/4=6500 G1=13500 G1 1/2=35000
Voltage V DC (3,5-11 W)	12-24-48-110
V AC (5-10 VA)	12-24-48-110-230

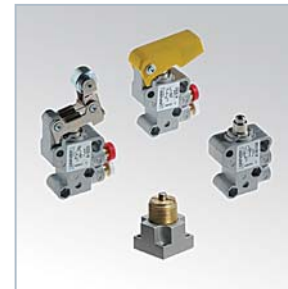
electric, pneumatic control
 poppet system


AG

Poppet valves for vacuum G1/8 - G1 1/2

Functions	2/2 - 3/2 NC/NO
Flow-rate NI/min	G1/8=580 G1/4=1100 G3/8=1500 G1/2=5400 G3/4=6500 G=13500 G1 1/2=35000
Voltage V DC (11 W)	12-24-48-110
V AC (10 VA)	12-24-48-110-230

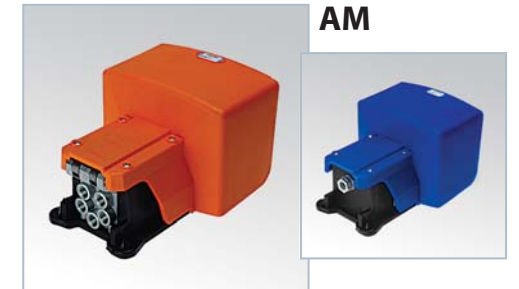
electric, pneumatic control
 poppet system


AI

JET pneumatic limit switches and miniature series

Functions	2/2 - 3/2 NC/NO
Flow-rate NI/min	
Jet	98
Miniature	110

Jet: M5, tube 4 Miniature: for M5 sub-base, tube 4 manual actuators 1 and 2 positions with threaded connections and for panel, pneumatic and mechanical actuators


AM

Pneumatic and electric foot valves

Functions	2/2 - 3/2 - 5/2
Flow-rate NI/min	
M5-G1/8	98
G1/4	800

versions: spring return, two positions, with safety protected and unprotected pedal
 electric pedal with single and double microswitch



HZE-D

Size 0

▪ Filter regulator + Lubricator

Size	Connections	Flow rate (NI/min)
0	G1/4	900
1	G3/8	1200
2	G1/2	2000



HZE-C

Size 0

▪ Filter + Regulator + Lubricator

Size	Connections	Flow rate (NI/min)
0	G1/4	900
1	G3/8	1200
2	G1/2	2000

AIR TREATMENT_



HZE-F

Size 0

▪ Filter

Size	Connections	Flow rate (NI/min)
0	G1/4	1100
1	G3/8	3500
2	G1/2	6500



HZE-R

Size 0

▪ Regulator

Size	Connections	Flow rate (NI/min)
0	G1/4	1000
1	G3/8	2100
2	G1/2	4300



HZE-L

Size 0

▪ Lubricator

Size	Connections	Flow rate (NI/min)
0	G1/4	1400
1	G3/8	4400
2	G1/2	7000



HZE-B

Size 0

▪ Filter regulator

Size	Connections	Flow rate (NI/min)
0	G1/4	1000
1	G3/8	2300
2	G1/2	4500


HZE-Y

▣ Gradual starter

Size	Connections
0	G1/4
1	G1/2
2	G3/4


HZE-N

▣ Diverter block

Size	Connections
0	G1/4
1	G3/8
2	G1/2


HZE-P

▣ Lockable valve

Size	Connections
0	G1/4
1	G3/8
2	G1/2


HZE-S

▣ Shut-off valve

Size	Connections
0	G1/4
1	G1/2
2	G3/4

Pneumatic/electric operation


HZRM

▣ Pressure microregulator G1/4

Connections	Flow-rate (NI/min)
G1/4	340


HZRP10

▣ Precision regulator

Connection	G1/4
Adjustment range bar	0,1÷3 - 0,1÷4 - 0,1÷8
Flow-rate NI/min	420
versions: standard, oversize exhaust	


HZRP20

▣ Precision regulator

Connection	G1/4
Adjustment range bar	0÷0,1 - 0÷1 - 0÷2 - 0,1÷10
Flow-rate NI/min	800
versions: standard, non relieving	





AM-55

▣ Blocking valve G1/8÷G1/2

Connections	Flow rate (NI/min)
G1/8 - G1/4	620
G1/4 - G3/8	2100
G1/2	3500

▣ unidirectional and bidirectional version



AM-52

▣ Gradual starter G1/8÷G1

Connections	Flow-rate (NI/min)
G1/8 - G1/4	620
G1/4 - G3/8	2100
G1/2 - G3/4	3500
G1	6800

▣ version with manual adjustment or electric switch



AM-50

▣ Flow regulators M5÷G1

Ø mm	Connections	Flow rate in adjustment (NI/min)	
		unidirectional	bidirectional
1	M5	100	100
1	G1/8	140	140
2,25	G1/8	120	120
3,5	G1/8	280	-
5	G1/4	350	350
6	G1/4	700	-
6	G3/8	350	350
9	G1/2 - G3/4	2200	2200
12	G1	2200	2200



AM-53

▣ Economizer G1/8÷G1

Connections	Flow-rate (NI/min)
G1/8 - G1/4	700/900
G1/4 - G3/8	1200/2000
G1/2 - G3/4	3500/5000
G1	5200/7500

ACCESSORIES



AM-51

▣ Signal processing valves G1/8 - tube Ø 4

Connections	Flow-rate (NI/min)
two pressure valve AND	
G1/8	300
tube Ø 4	110
selector valve OR	
G1/8	300
tube Ø 4	110



AM-54

▣ Unidirectional check valves G1/2÷G1

Connections	Flow-rate (NI/min)
G1/2 - G3/4	4500
G1	7500



AM-5200

▣ Pneumoelectric transducers

Function	NO-NC
Voltage	16 A-250 V 50Hz
	5 A-250 V 50Hz
	3 A-30 V DC



AM-5220

▣ Calibrated pressure switches

Function	NO-NC
Voltage	16 A-250 V 50Hz
	5 A-250 V 50Hz
	3 A-30 V DC
Adjustment range bar	1÷8


HA

▪ Push-in fittings in technopolymer

Tube mm	Ø 4-6-8-10-12
Threaded connection	M5, G1/8, G1/4, G3/8, G1/2

versions: cylindrical thread with O-ring and conical Teflon pre-treatment
body and release ring in technopolymer


HB

▪ Push-in fittings in metal

Tube mm	Ø 3-4-5-6-8-10-12-14
Threaded connection	M3, M5, G1/8, G1/4, G3/8, G1/2

versions: cylindrical thread with O-ring
body and release ring in metal


HC

▪ Automatic fittings and accessories with pneumatic function

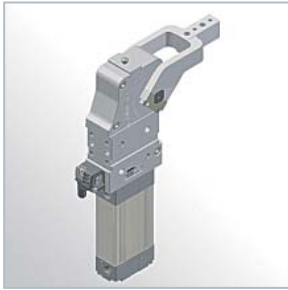
Elbow and intermediate flow regulator
Slider valves
Quick exhaust valves
Miniature ball valves
2/2 - 3/2 manual miniature valves
Check valves
Silencers


HD

▪ Standard fittings in metal

Threaded connections M5, G1/8, G1/4, G3/8, G1/2, G3/4, G1



**UBP**

▀ UNIVERSAL pneumatic power clamps with adjustable opening angle from 0° to 135°

Ø Cylinder mm	40-50-63-80
Version	pneumatic standard with manual lever

Mounting DIN, NAAMS



available with self-holding system and various types of clamping arms

**UGP**

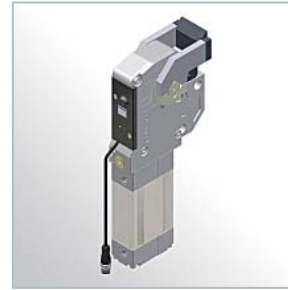
▀ UNIVERSAL gripper units with adjustable opening angle from 0° to 95°

Ø Cylinder mm	40
Version	pneumatic standard with manual lever

Mounting DIN



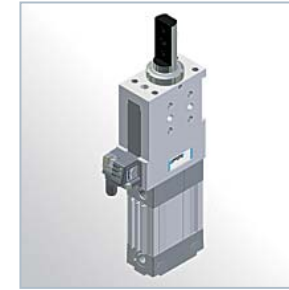
available with jaws double or single movement

**DMS**

▀ Power clamps conforming to the CNOMO standard with adjustable opening angle

Ø Cylinder mm	32-40-50-63
Mounting	CNOMO

available with or without brake

**LCP**

▀ Pneumatic retractable locating pin units

Ø Cylinder mm	50-63
Version	pneumatic standard - with manual lever double rod

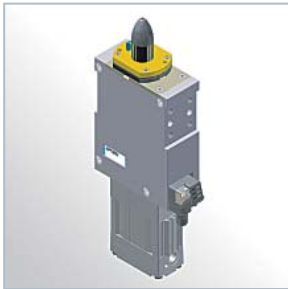
available also in compact version

Mounting DIN, CNOMO



available with different rods and strokes

AUTOMOTIVE_

**LSPG**

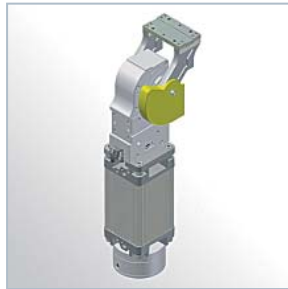
▀ Pneumatic under body clamps

Ø Cylinder mm	50
Version	pneumatic standard manual without cylinder

Mounting DIN



available with vanishing hook,
with vanishing hook and pin orthogonal series
various locating pin diameters and hook's working heights

**UAGP**

▀ Pneumatic rotating units

Ø Cylinder mm	80-100-125-160-200
Version	with brake passive-intervention

Mounting DIN



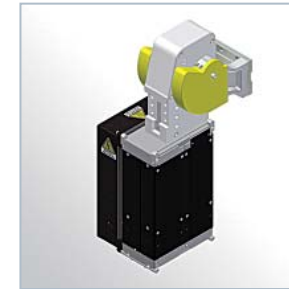
various rotating tables available

**LAE**

▀ Electric clamping units

Size	140-225-350-950
Mounting	DIN, NAAMS

available with remoted manual control
various types of clamping arms available
electronic control module original UNIVER

**LAGE**

▀ Electric power pivots

Size	500-1000
Mounting	DIN

available with remoted electronic control module
various rotating tables available





LGP25-32

▪ Grippers

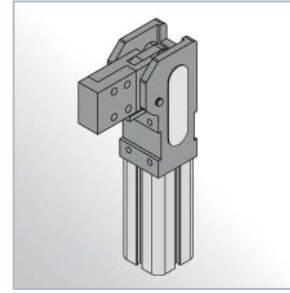
Ø Cylinder mm	25-32
Version	pneumatic standard double and single movement
Mounting	DIN
<input type="checkbox"/> various mounting options available opening angle adjustment	



UNIBLOCK

▪ Manual clamping devices

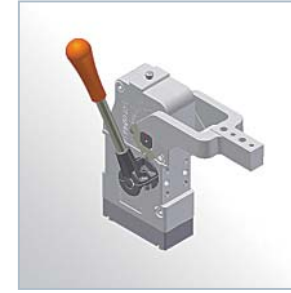
Version	manual
<input type="checkbox"/> vertical, horizontal series, pull action, straight line action, heavy duty	



UNIBLOCK

▪ Pneumatic clamping devices

Ø Cylinder mm	16-25
Version	pneumatic standard
<input type="checkbox"/> available with front mounting pattern or with 4-sided mounting	



UNIFLEX

▪ UNIFLEX clamping units

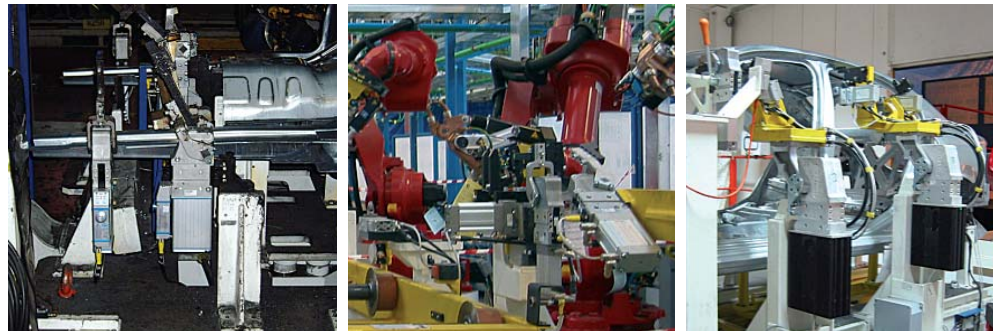
Ø Cylinder mm	40-50-63-80
Version	manual, pneumatic, pneumatic with manual control
<input type="checkbox"/> available with front mounting or with 4-sided mounting various types of clamping arms available DIN standard	

Automotive



References

- | | |
|-------------|-------------------------------|
| ABB | MAHINDRA & MAHINDRA |
| ALFA ROMEO | MASERATI |
| AUDI | MERCEDES BENZ |
| AUTODYNE | OPEL |
| BMW | PININFARINA |
| CHRYSLER | PORSCHE |
| COMAU | PSA PEUGEOT CITROËN |
| EDAG | RENAULT TRUCK |
| FAURECIA | SEAT |
| FERRARI | SEVERSTAL |
| FFT | SKODA |
| FIAT GROUP | TATA MOTORS |
| FORD | THYSSEN KRUPP DRAUZ NOTHELFER |
| GENIX | TOFAS |
| GM | VAN ROB STAMPING |
| KUKA | VRK |
| IVECO | VOLKSWAGEN |
| MAGNA STEYR | WILHELM KARMANN |
| MAGNETTO | ZASTAVA |



▪ Pneumatic and electric applications



UNIVER S.p.A.

Headquarter
20128 **Milano**
Via Eraclito, 31
Tel. +39 02 25298.1
Fax +39 02 2575254
info@univer-group.com
www.univer-group.com

UNIVER SERVICE S.r.l.

Headquarter
I - 20128 **Milano**
Via Empedocle, 20
Tel. +39 0225298.1
Fax +39 0225298370
universervice@universervice.it
www.universervice.it

Branch Office:

LOMBARDIA/VENETO

I - 20128 **Milano**
Via Empedocle, 20
Tel. +39 0225298.1
Fax +39 0225298370
universervice@universervice.it
www.universervice.it

I - 24060 Castelli Calepio **Bergamo**

Via C. Curotti, 31/33
Tel. +39 035 892707
Fax +39 035 892700
castellicalepio@universervice.it
www.universervice.it

PIEMONTE/LIGURIA/VALLE D'AOSTA

I - 10071 Borgaro Torinese **Torino**
Via Veneto, 18
Tel. +39 011 4501871
Fax +39 011 4502898
torino@universervice.it
www.universervice.it

UNIVER CUNEO S.r.l.

12040 **Cervere** (CN)
Via dell'Aviazione s.n.
Tel. +39 0172 495790/38
Fax +39 0172 2495611

CENTRO/SUD

I - 40069 Zola Predosa **Bologna**
Via Guido Rossa, 21
Tel. +39 051 753907
Fax +39 051 6184751
bologna@universervice.it
www.universervice.it

UNIVER Pty Ltd
AUSTRALIA - 3175 **Victoria**
Nicole Way Dandenong, 11
Tel. +61 3 97930377
Fax +61 3 97930399
sales@univer.net.au

UNIVER do Brasil S/A
BRASIL - 83055-320
São José dos Pinhais - Paraná
Av. Rui Barbosa, 3005
Tel. +55 41 33824606
Fax +55 41 33824807
univerbrasil@univer.com.br
www.univer.com.br

UNIVER OY
FINLAND - 15200 **Lahti**
Hirsimetsäntie, 9
Tel. +358 207 491400
Fax +358 207 491401
sales@univer.fi
www.univer.fi

UNIVER FRANCE S.a.s.
FRANCE - 68000 **Colmar**
1, rue Denis Papin
Tel. +33 03 89210900
Fax +33 03 89216850
info@univer-france.fr
www.univer-france.fr

Distributors Worldwide:

ARGENTINA	MOROCCO
AUSTRIA	NETHERLANDS
BELGIUM	NEW ZEALAND
CANADA	PAKISTAN
CHINA	PERÚ
CROAZIA	POLAND
CYPRUS	PORTUGAL
CZECH REPUBLIC	SAUDI ARABIA - KUWAIT - QATAR
DENMARK	SERBIA
ECUADOR	SLOVENIA
EGYPT	SOUTH AFRICA
FRANCE	SOUTH KOREA
GREECE	SYRIA
HUNGARY	TAIWAN
INDIA	THAILAND
INDONESIAN	TUNISIA
IRELAND	TURKEY
ISRAEL	USA
MALAYSIA	UNITED ARAB EMIRATES - OMAN - YEMEN

UNIVER GmbH
GERMANY - 53859 **Niederkassel**
Marktstr., 114
Tel. +49 2208 9090-0
Fax +49 2208 9090-40
info@univer-gmbh.de
www.univer-group.com

UNIVER S.L.
System Supplier Pneumatic
SPAIN - 08210 **Barbera Del Valles**
Barcelona
Ronda Industria, 26 - 28
Tel. +34 93 7297360
univer@univerweb.com
www.univerweb.com

UNIVER SWEDEN AB
SWEDEN - 44361 **Stenkullen**
Hedeforsvägen, 2
Tel. +46 302 23060
Fax +46 302 22864
info@univer.se
www.univer.se

UNIVER AG
SWITZERLAND - 6312 **Steinhausen**
Postfach - Sumpfstrasse, 26
Tel. +41 41 7417580
Fax +41 41 7417280
mail@univer-ag.ch
www.univer-ag.ch

UNIVER
Manufacturing Company Ltd.
UNITED KINGDOM - **Bradford**
Station Road - West Yorkshire BD145F
Tel. +44 1274 725777
Fax +44 1274 725111
enquiries@univer.co.uk
www.univer.co.uk