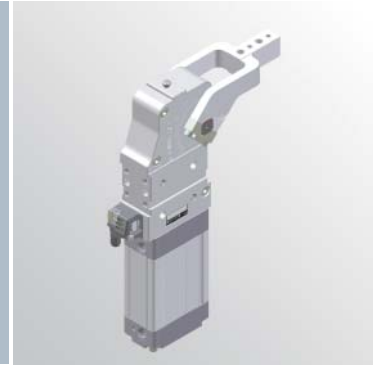


# UBP63

## UNIVERSAL clamps



<b>U</b>	<b>B</b>	<b>P</b>	<b>6</b>	<b>3</b>	<b>N</b>	<b>N</b>	<b>U</b>
<b>1</b>	<b>2</b>	<b>3</b>		<b>4</b>	<b>5</b>	<b>6</b>	

<b>1 Series</b>	<b>2 Version</b>	<b>3 Size</b>
-----------------	------------------	---------------

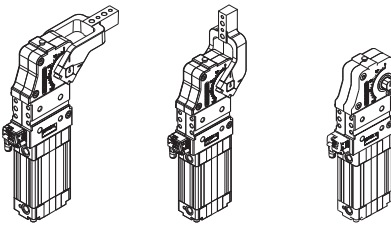
**UB** = UNIVERSAL clamps- fully adjustable opening angle from 0° to 135°

**P** = Pneumatic-standard

**63** = ø 63 mm

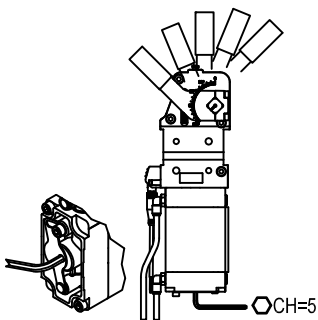
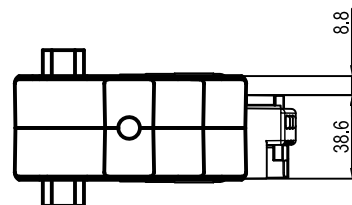
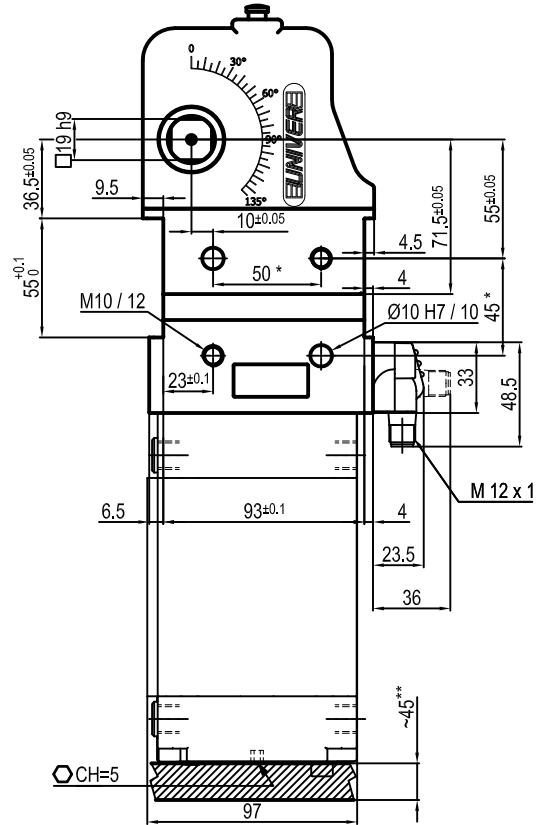
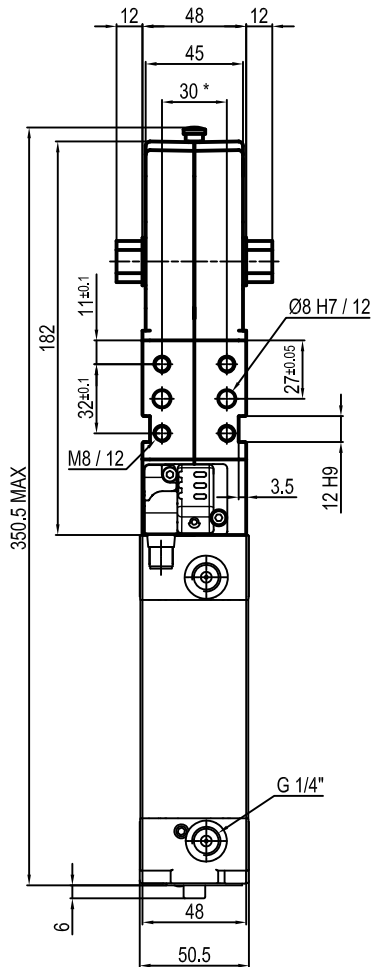
<b>4 Arm mount position</b>	<b>5 Arm style</b>	<b>6 Sensing style</b>
-----------------------------	--------------------	------------------------

**V** = 90°    **O** = 180°    **N** = no arm



**C** = Central - standard  
**D** = Right - standard  
**S** = Left - standard  
**E** = Central, 45mm from pivot point  
**F** = Right, 45mm from pivot point  
**L** = Left, 45mm from pivot point  
**O** = Central with self-holding system  
**P** = Right with self-holding system  
**Q** = Left with self-holding system  
**N** = No arm  
**Y** = Central, oversize dowel holes Ø 8 H7  
**X** = Right, oversize dowel holes Ø 8 H7  
**Z** = Left, oversize dowel holes Ø 8 H7

**N** = no sensor (with protection plate)  
**U** = Electronic sensor with M12 swivel connector  
**D** = Pneumatic sensor



Bore Ø	Holding moment	Clamping moment	Weight (Clamping arm not included)
63 mm	1750 Nm	420 Nm	2.7 Kg

Min./Max. operating pressure: **0,4 / 0,8 MPa**

Operating temperature: **5° + 45° C**

Opening angle: **adjustable from 0° to 135°**

Without arm

Electronic sensor with M12 swivel connector that can be orientated at 0° or 90°

Supply voltage: 10÷30 Vdc

IP code: **IP 65**

Pneumatic ports on both sides

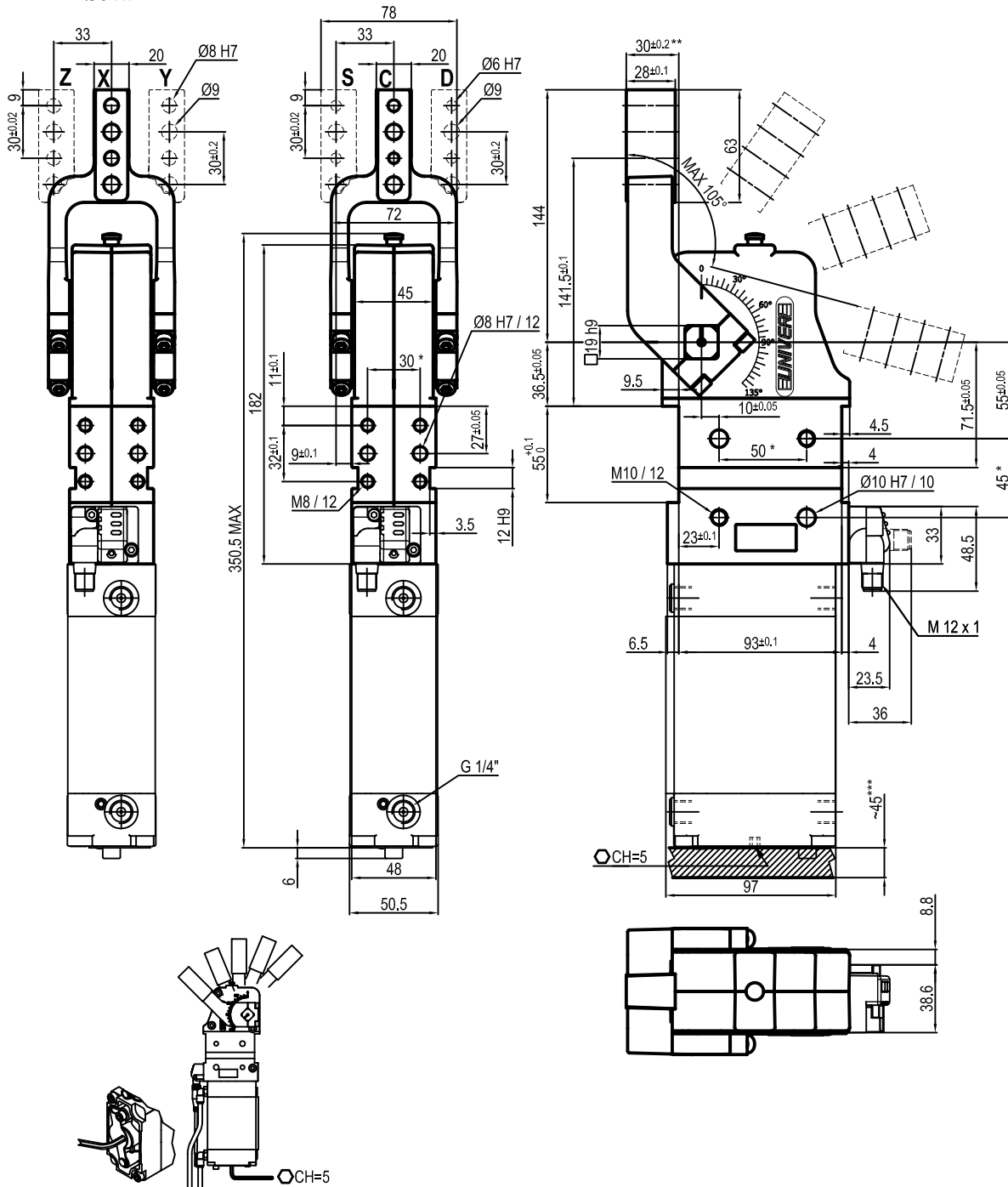
\* : TOLERANCE BETWEEN DOWELS ± 0.02, TO SCREW HOLES ± 0.1

\*\* : AREA TO ACCESS ANGLE ADJUSTMENT

Subject to technical modifications without notice

## UNIVERSAL Pneumatic clamp

Oversize dowel holes  
Ø8 H7



Bore Ø	Holding moment	Clamping moment	Weight (Clamping arm not included)
63 mm	1750 Nm	420 Nm	3 Kg

Min./Max. operating pressure: **0,4 / 0,8 MPa**

Operating temperature: **5° ± 45° C**

Opening angle: **adjustable from 0° to 105°**

Horizontal arm mount position

Electronic sensor with M12 swivel connector that can be orientated at 0° or 90°

Supply voltage: 10÷30 Vdc

IP code: **IP 65**

Pneumatic ports on both sides

\* : TOLERANCE BETWEEN DOWELS ± 0.02, TO SCREW HOLES ± 0.1

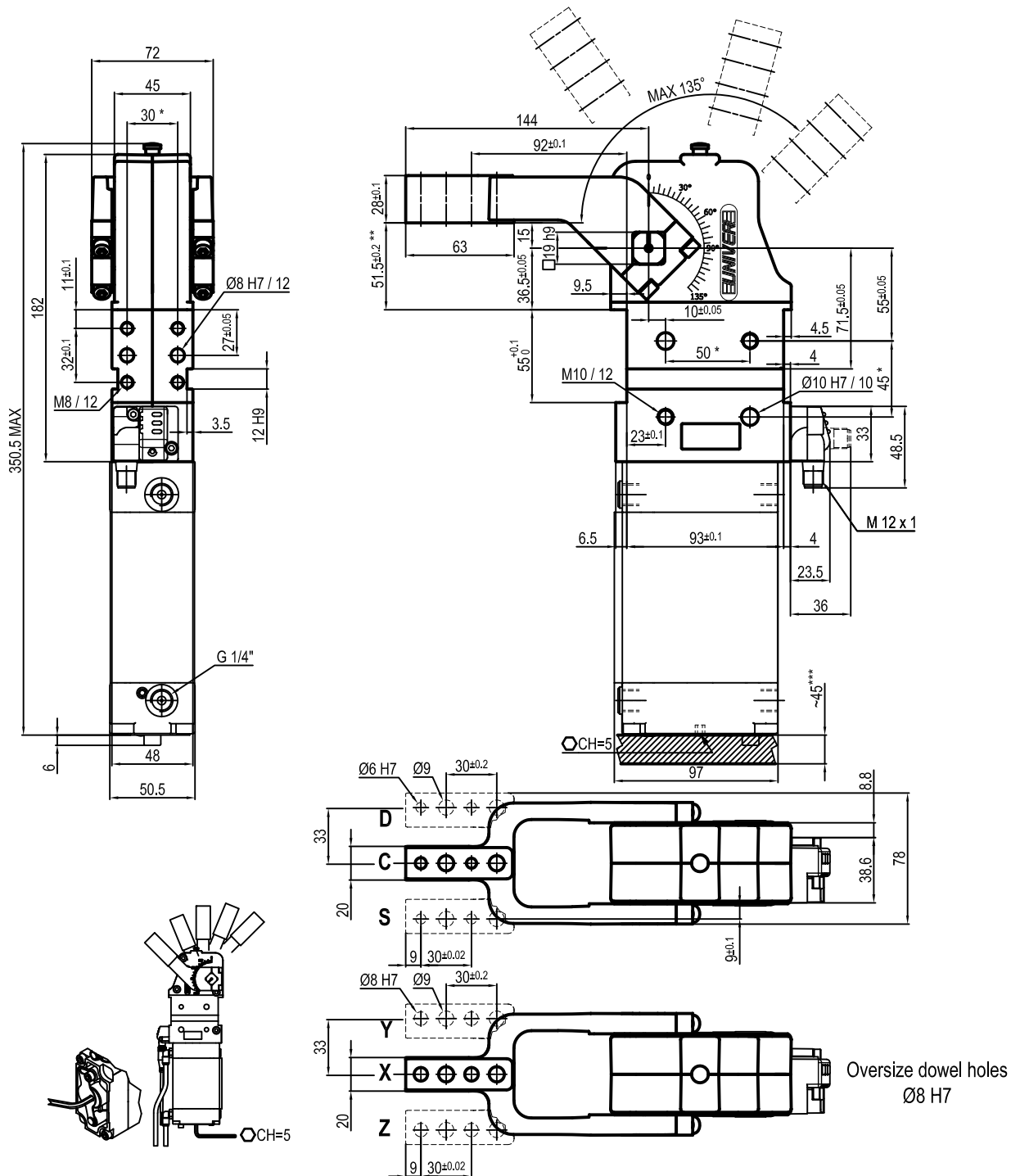
\*\* : TOLERANCE AT 80 mm FROM PIVOT POINT

\*\*\* : AREA TO ACCES ANGLE ADJUSTMENT

Subject to technical modification without notice.



## UNIVERSAL Pneumatic clamp



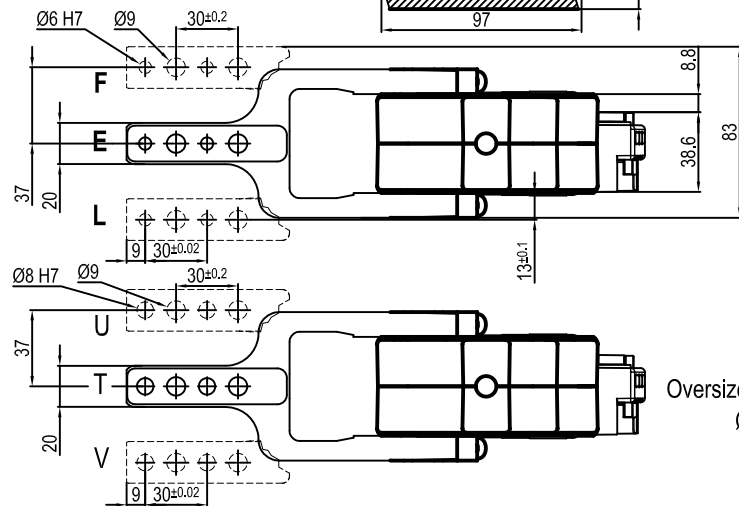
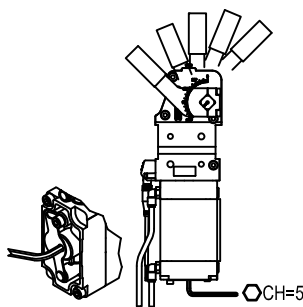
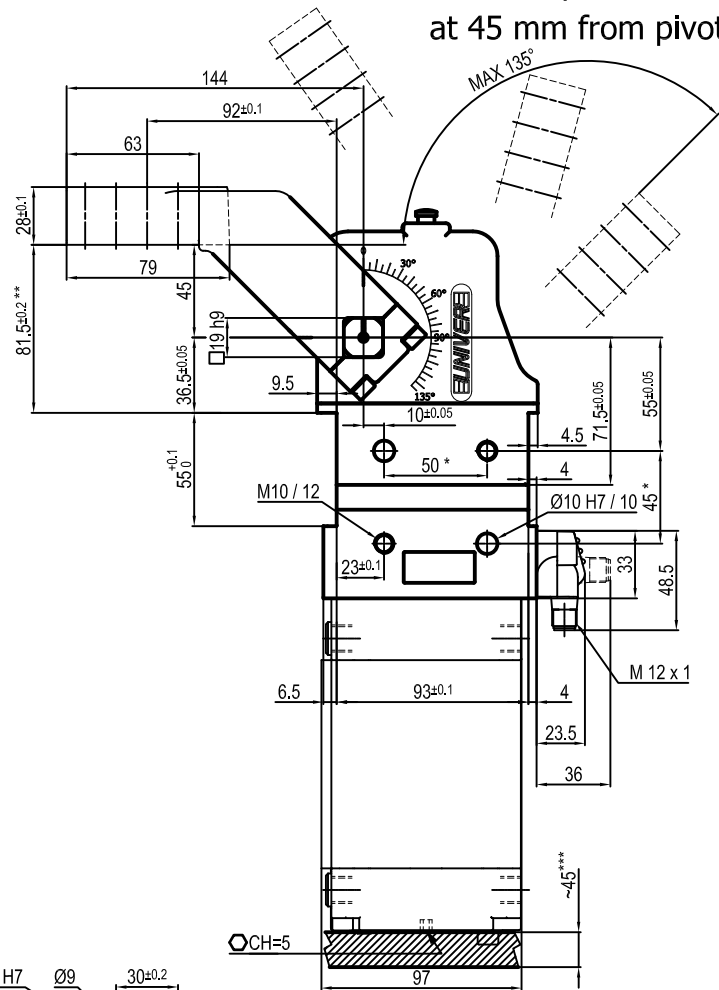
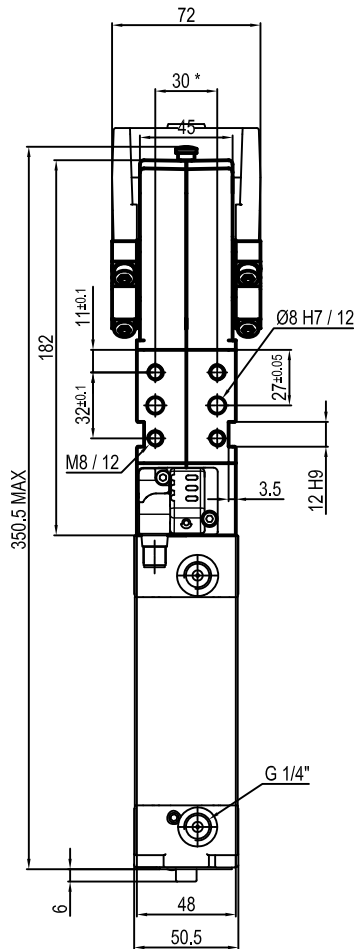
Bore Ø	Holding moment	Clamping moment	Weight (Clamping arm not included)
63 mm	1750 Nm	420 Nm	3 Kg

Min./Max. operating pressure: **0,4 / 0,8 MPa**  
 Operating temperature: **5° ± 45° C**  
 Opening angle: **adjustable from 0° to 135°**  
 Vertical arm mount position  
 Electronic sensor with M12 swivel connector that can be orientated at 0° or 90°  
 Supply voltage: 10+30 Vdc  
 IP code: **IP 65**  
 Pneumatic ports on both sides

\* : TOLERANCE BETWEEN DOWELS ± 0.02, TO SCREW HOLES ± 0.1  
 \*\* : TOLERANCE AT 80 mm FROM PIVOT POINT  
 \*\*\* : AREA TO ACCES ANGLE ADJUSTMENT

Subject to technical modification without notice.

## UNIVERSAL Pneumatic power clamp arm at 45 mm from pivot point



Overdose dowel holes  
Ø8 H7

Bore Ø	Holding moment	Clamping moment	Weight (Clamping arm not included)
63 mm	1750 Nm	420 Nm	3 Kg

Min./Max. operating pressure: **0,4 / 0,8 MPa**  
 Operating temperature: **5° + 45° C**  
 Opening angle: **adjustable from 0° to 135°**  
 Vertical arm mount position  
 Electronic sensor with M12 swivel connector that can be orientated at 0° or 90°  
 Supply voltage: 10+30 Vdc  
 IP code: **IP 65**  
 Pneumatic ports on both sides

\* : TOLERANCE BETWEEN DOWELS ± 0.02, TO SCREW HOLES ± 0.1  
 \*\* : TOLERANCE AT 80 mm FROM PIVOT POINT  
 \*\*\* : AREA TO ACCES ANGLE ADJUSTMENT

Subject to technical modifications without notice.