

LAGP150

Unità rotante pneumatica



L	A	G	P	1	5	0	V	E	0	9	0	B	C	
1	2	3	4	5	6	7	8	9						

1 Serie	2 Versione	3 Taglia
----------------	-------------------	-----------------

LAG = Unità rotante con angoli di rotazione determinanti

P = Pneumatica standard

150 = Cilindro Ø 100 mm

4 Posizione tavola	5 Sensore di posizione	6 Angoli di rotazione
---------------------------	-------------------------------	------------------------------

V = Verticale 180°

O = Orizzontale 90°

Z = Verticale, speculare alla posizione V
massima apertura angolare 120°

P = Orizzontale, speculare alla posizione O
massima apertura angolare 60°

E = Sensore elettronico
con connettore M12 orientabile

A = Sensore elettronico
con connettore M12 orientabile +
sensore elettronico per rilevamento
condizione freno

120 = 120°

090 = 90°

060 = 60°

045 = 45°

7 Blocco di stazionamento	8 Valvola	9 Connessioni
----------------------------------	------------------	----------------------

B = Con blocco di stazionamento

W = Senza blocco di stazionamento

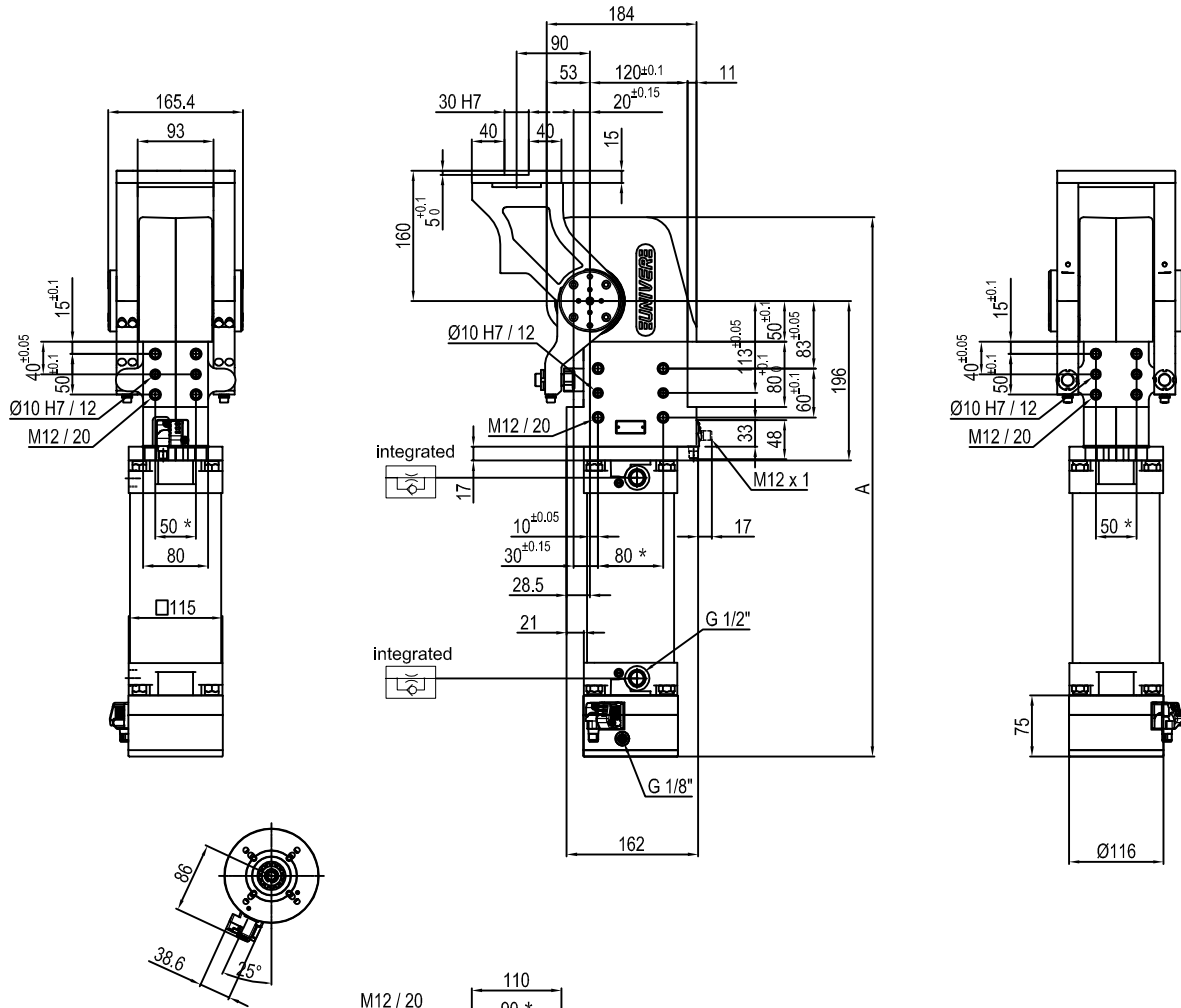
C = Valvola integrata per
ottimizzazione tempo ciclo

_ = Se non specificato lato sinistro
(parte sinistra del sensore)

D = Lato destro (parte destra del sensore)

F = Frontale (di fronte al sensore)

P = Posteriore (stesso lato del sensore)

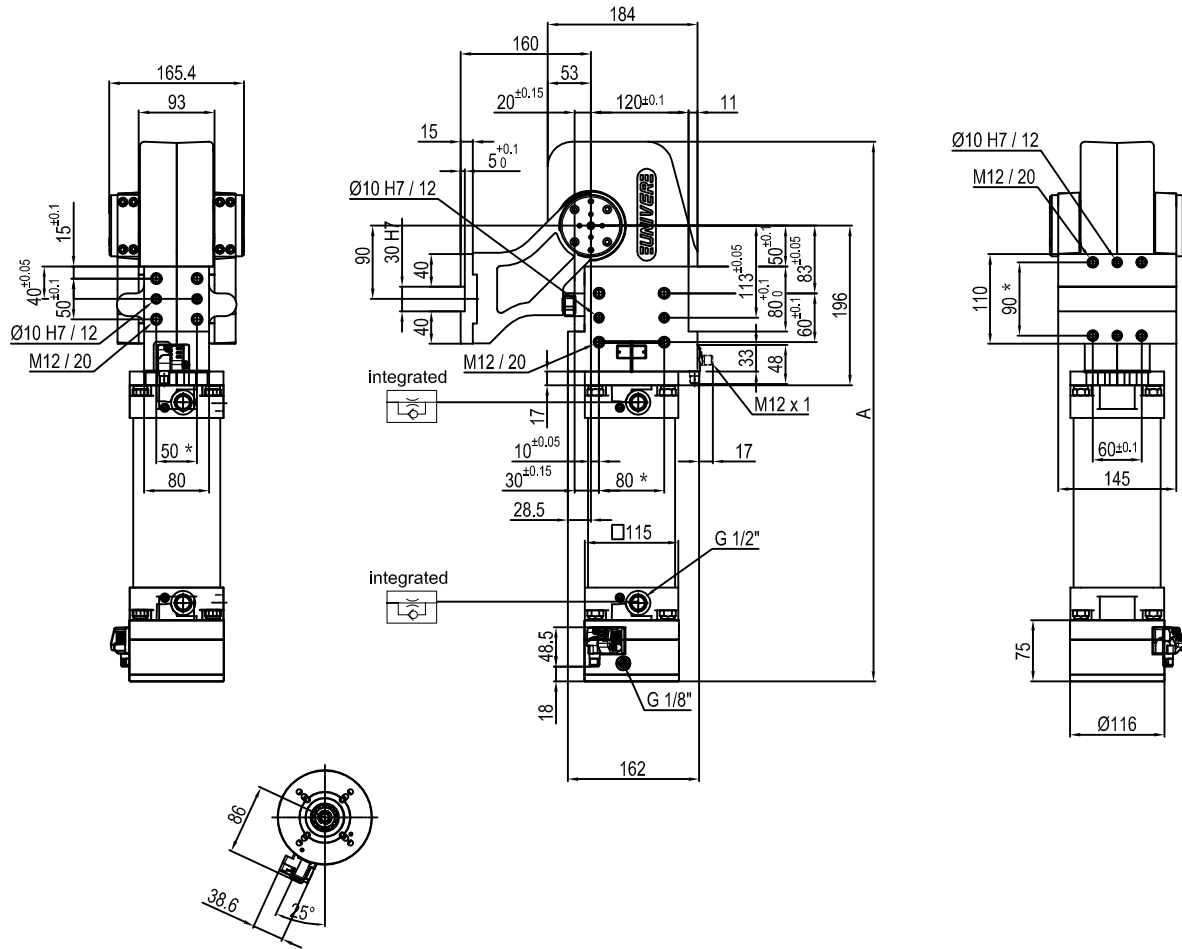


Pivot rotation in degrees	A
45°	583.5
60°	597
90°	628
120°	662.5

Size	Holding moment	Max. torque at the rotary table 0,55 MPa	Weight
150	6000 Nm	120 Nm	25 Kg

* : TOLERANCE BETWEEN DOWEL HOLES ± 0.02, TO SCREW HOLES ± 0.1

Min./Max. operating pressure: **0,4 / 0,6 MPa**
 Operating temperature: **5° + 45° C**
 Predetermine pivot rotation in degrees: **45° - 60° - 90° - 120°**
 Electronic sensor with M12 swivel connector that can be orientated at 0° or 90°
 Supply voltage: 10+30 V DC
 IP code: **IP 65**



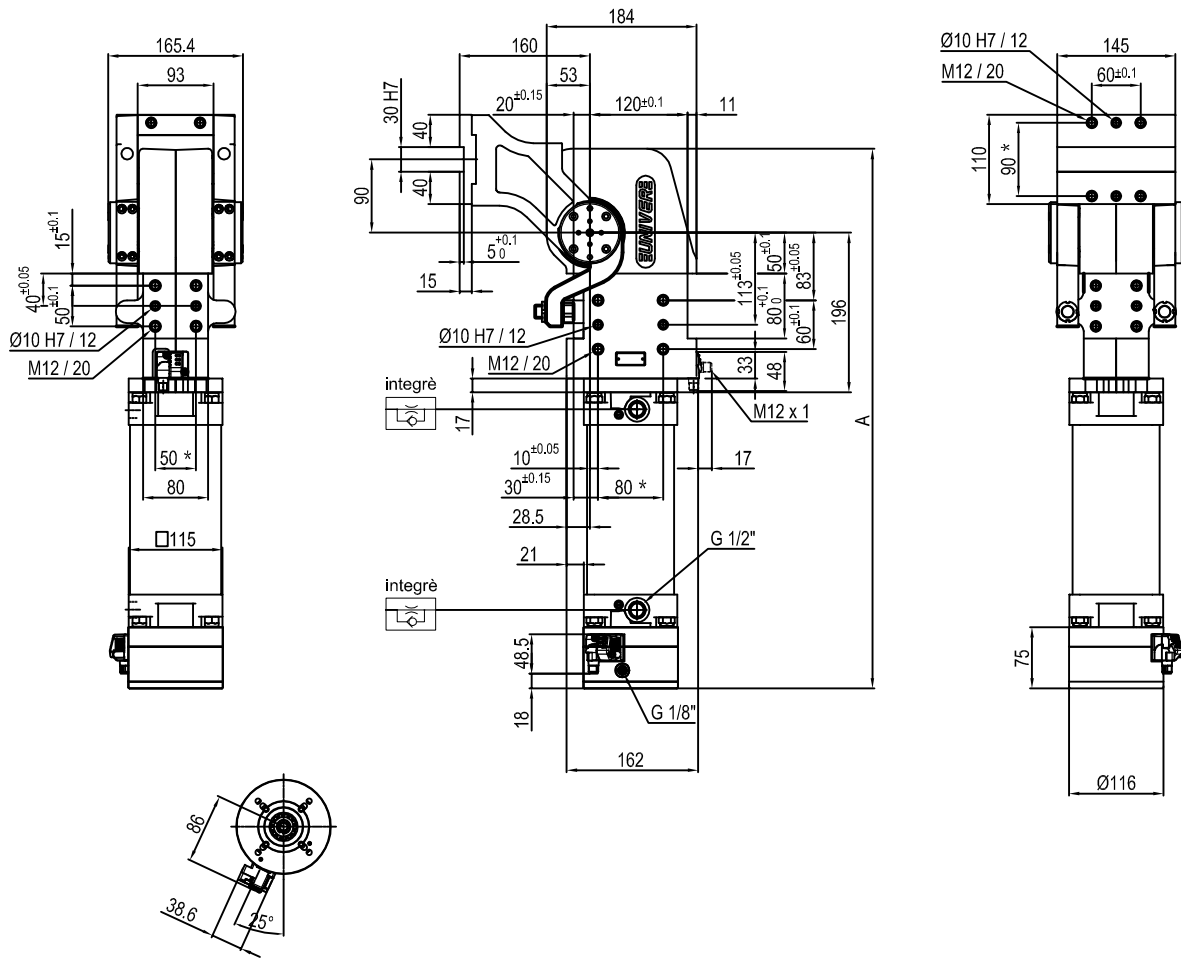
Pivot rotation in degrees	A
45°	583.5
60°	597
90°	628
120°	662.5

Size	Holding moment	Max. torque at the rotary table 0,55 MPa	Weight
150	6000 Nm	120 Nm	25 Kg

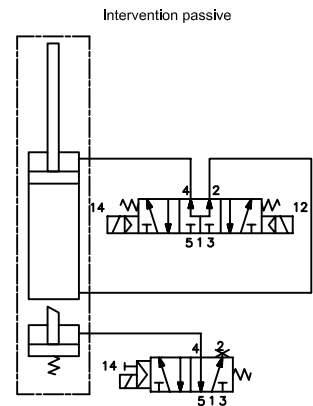
Min./Max. operating pressure: **0,4 / 0,6 MPa**
 Operating temperature: **5° ± 45° C**
 Predetermine pivot rotation in degrees: **45° - 60° - 90° - 120°**
 Electronic sensor with M12 swivel connector that can be orientated at 0° or 90°
 Supply voltage: 10+30 V DC
 IP code: **IP 65**

* : TOLERANCE BETWEEN DOWEL HOLES ± 0.02, TO SCREW HOLES ± 0.1

Subject to technical modifications without notice.



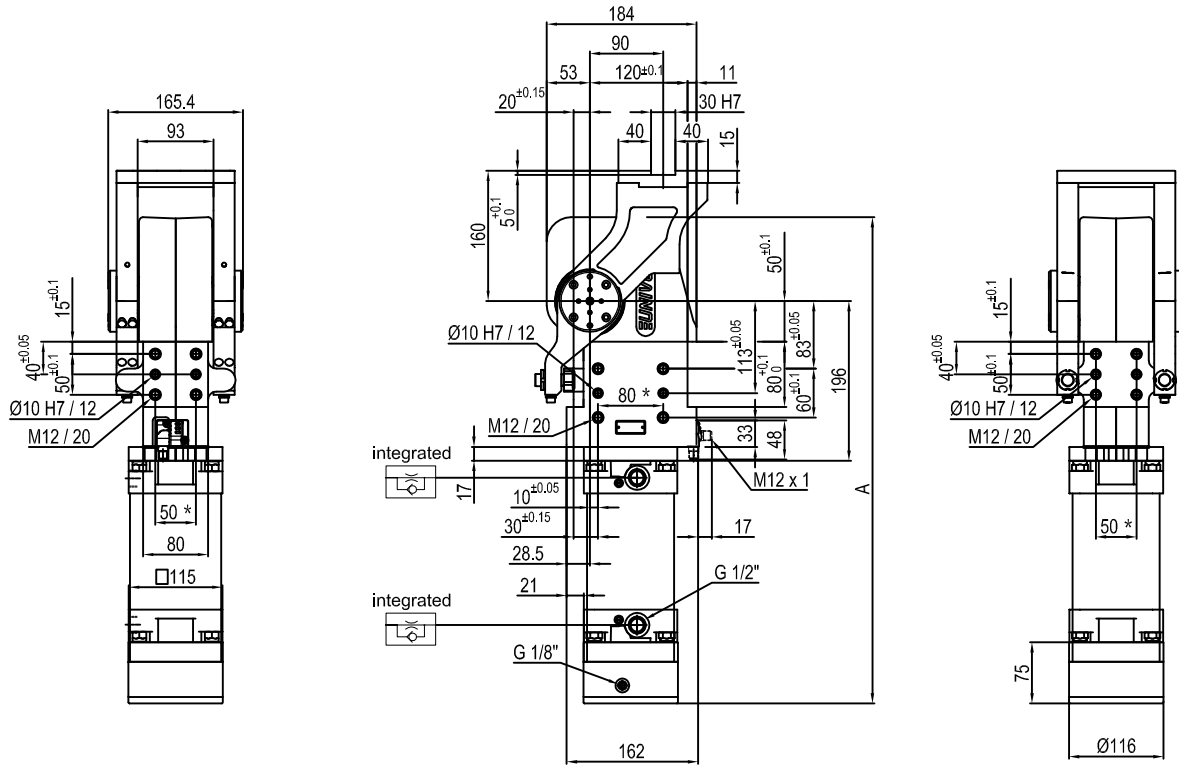
Angles de rotation	A
45°	583.5
60°	597
90°	628
120°	662.5



Taille	Couple de retenue	Moment de torsion Max. à la table à 0,55 MPa	Poids
150	6000 Nm	120 Nm	25 Kg

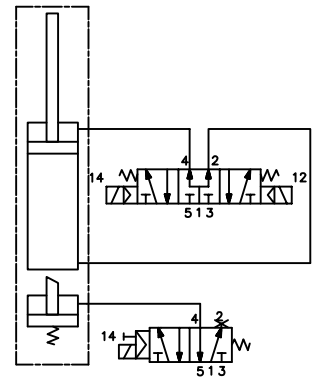
* : TOLÉRANCE TROUS DE CENTRAGE ± 0.02, TROUS FILETÉS ± 0.1

Pression min./max. de fonctionnement: **0,4 / 0,6 MPa**
 Température de fonctionnement: **5° ± 45° C**
 Angle de rotation étrier pré-établi: **45° - 60° - 90° - 120°**
 Détecteur électronique avec connecteur M12, orientable à 0° ou 90°
 Tension de fonctionnement: 10 + 30 V DC
 Protection: **IP 65**



Pivot rotation in degrees	A
45°	583.5
60°	597

Passive brake



Size	Holding moment	Max. torque at the rotary table 0,55 MPa	Weight
150	6000 Nm	120 Nm	25 Kg

Min./Max. operating pressure: 0,4 / 0,6 MPa

Operating temperature: 5° ± 45° C

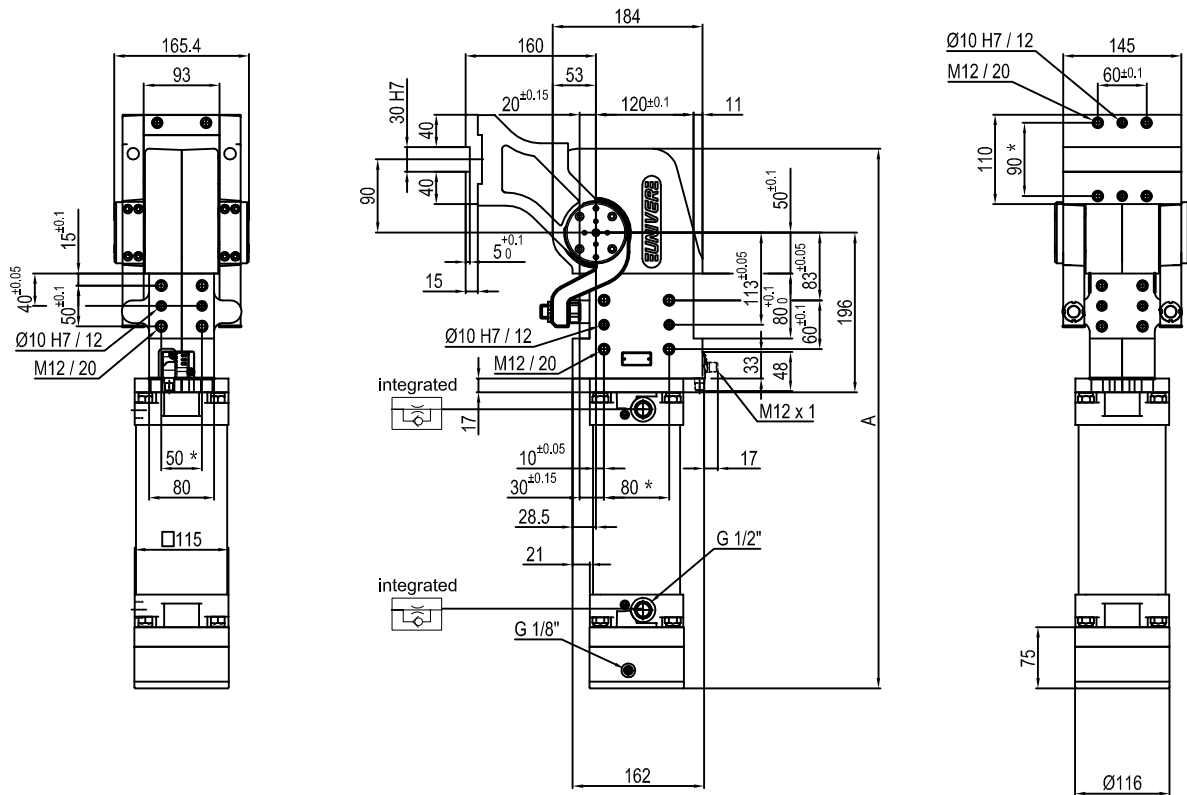
Predetermine pivot rotation in degrees: 45° - 60°

Electronic sensor with M12 swivel connector that can be orientated at 0° or 90°

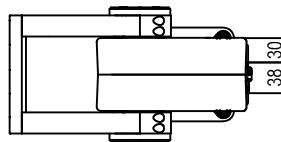
Supply voltage: 10±30 V DC

IP code: IP 65

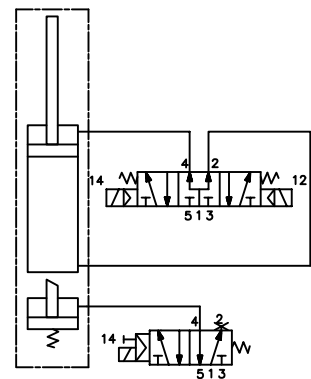
* : TOLERANCE BETWEEN DOWEL HOLES ± 0.02, TO SCREW HOLES ± 0.1



Pivot rotation in degrees	A
45°	583.5
60°	597
90°	628
120°	662.5



Passive brake



Size	Holding moment	Max. torque at the rotary table 0,55 MPa	Weight
150	6000 Nm	120 Nm	25 Kg

Min./Max. operating pressure: 0,4 / 0,6 MPa

Operating temperature: 5° + 45° C

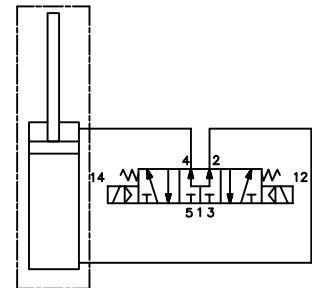
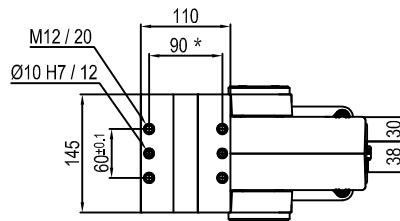
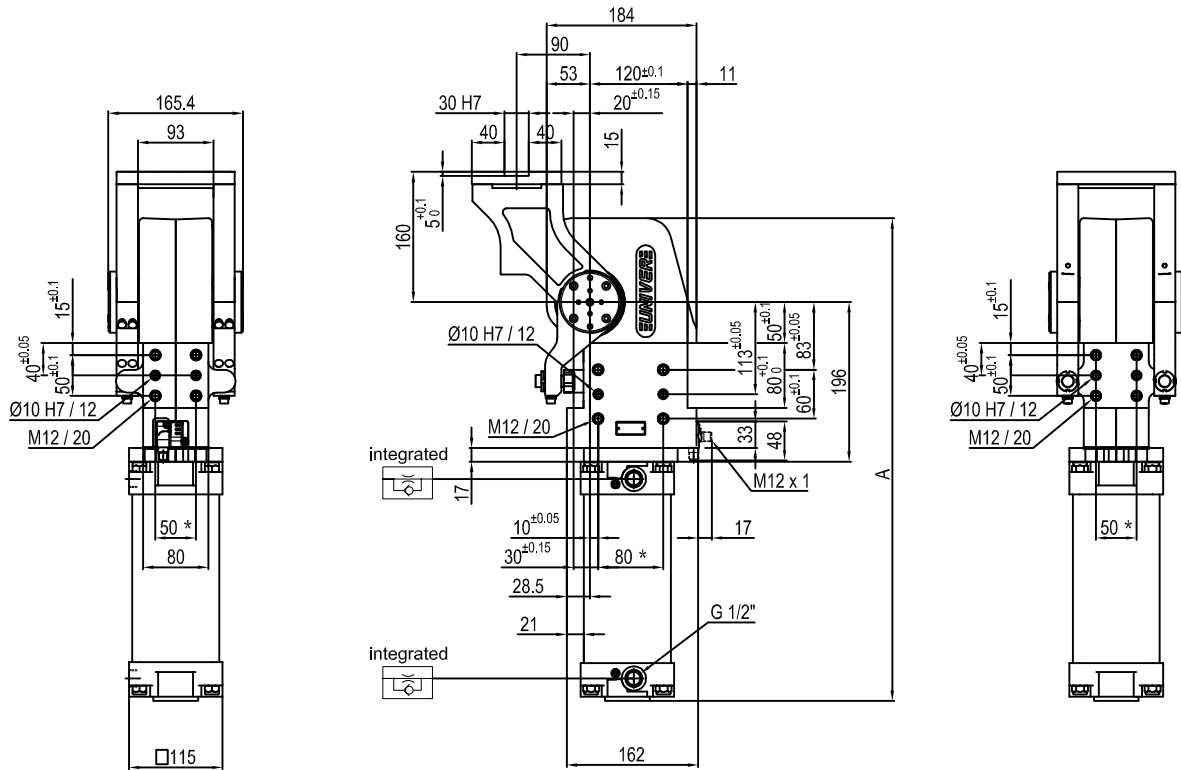
Predetermine pivot rotation in degrees: 45° - 60° - 90° - 120°

Electronic sensor with M12 swivel connector that can be orientated at 0° or 90°

Supply voltage: 10÷30 V DC

IP code: IP 65

* : TOLERANCE BETWEEN DOWEL HOLES ± 0.02, TO SCREW HOLES ± 0.1



Pivot rotation in degrees	A
45°	513.5
60°	527
90°	558
120°	592.5

Size	Holding moment	Max. torque at the rotary table 0,55 MPa	Weight
150	6000 Nm	120 Nm	23 Kg

Min./Max. operating pressure: **0,4 / 0,6 MPa**

Operating temperature: **5° + 45° C**

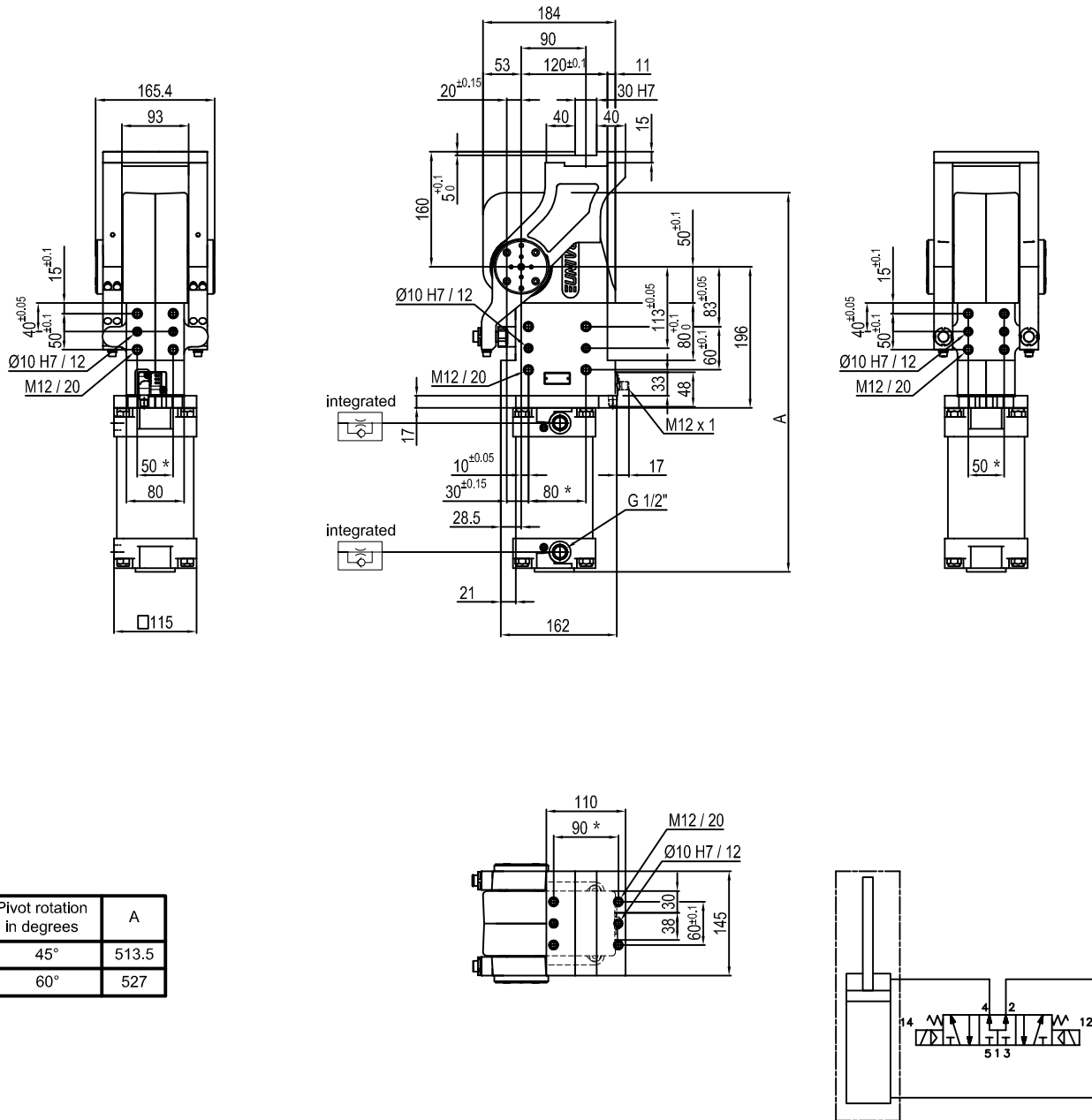
Predetermine pivot rotation in degrees: **45° - 60° - 90° - 120°**

Electronic sensor with M12 swivel connector that can be orientated at 0° or 90°

Supply voltage: 10÷30 V DC

IP code: **IP 65**

* : TOLERANCE BETWEEN DOWEL HOLES ± 0.02, TO SCREW HOLES ± 0.1



Pivot rotation in degrees	A
45°	513.5
60°	527

Size	Holding moment	Max. torque at the rotary table 0,55 MPa	Weight
150	6000 Nm	120 Nm	23 Kg

Min./Max. operating pressure: **0,4 / 0,6 MPa**

Operating temperature: **5° + 45° C**

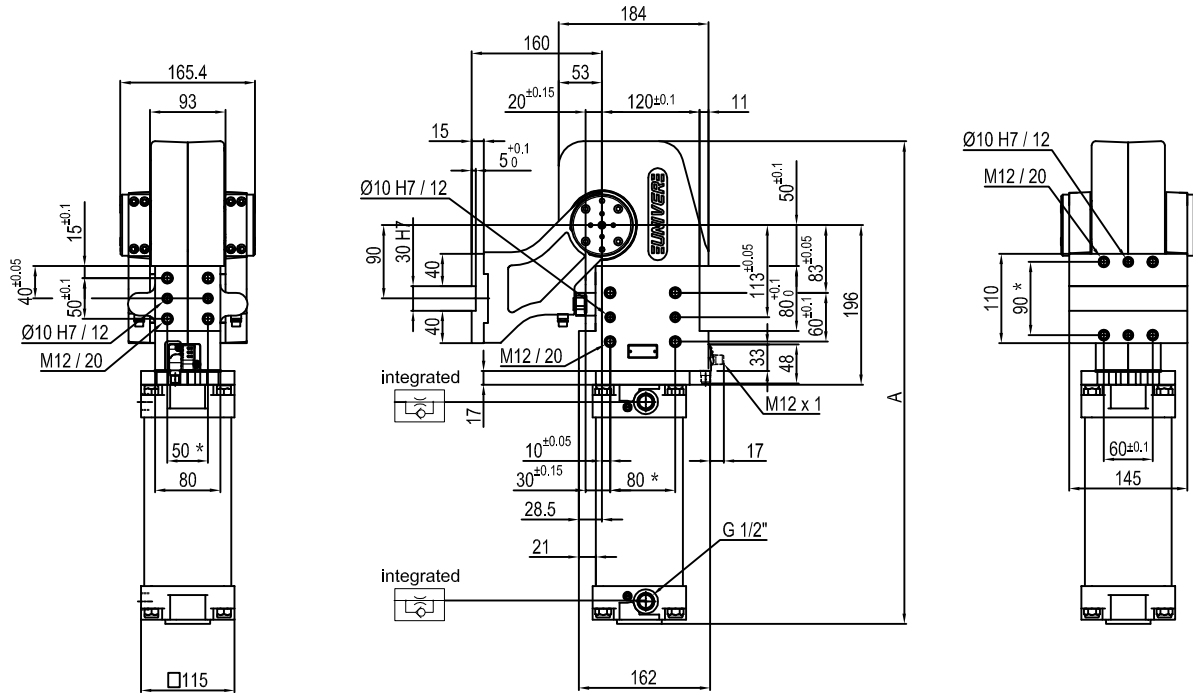
Predetermine pivot rotation in degrees: **45° - 60°**

Electronic sensor with M12 swivel connector that can be orientated at 0° or 90°

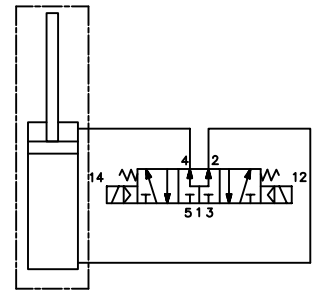
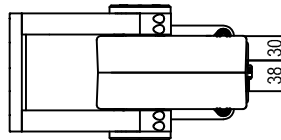
Supply voltage: 10÷30 V DC

IP code: **IP 65**

* : TOLERANCE BETWEEN DOWEL HOLES ± 0.02, TO SCREW HOLES ± 0.1



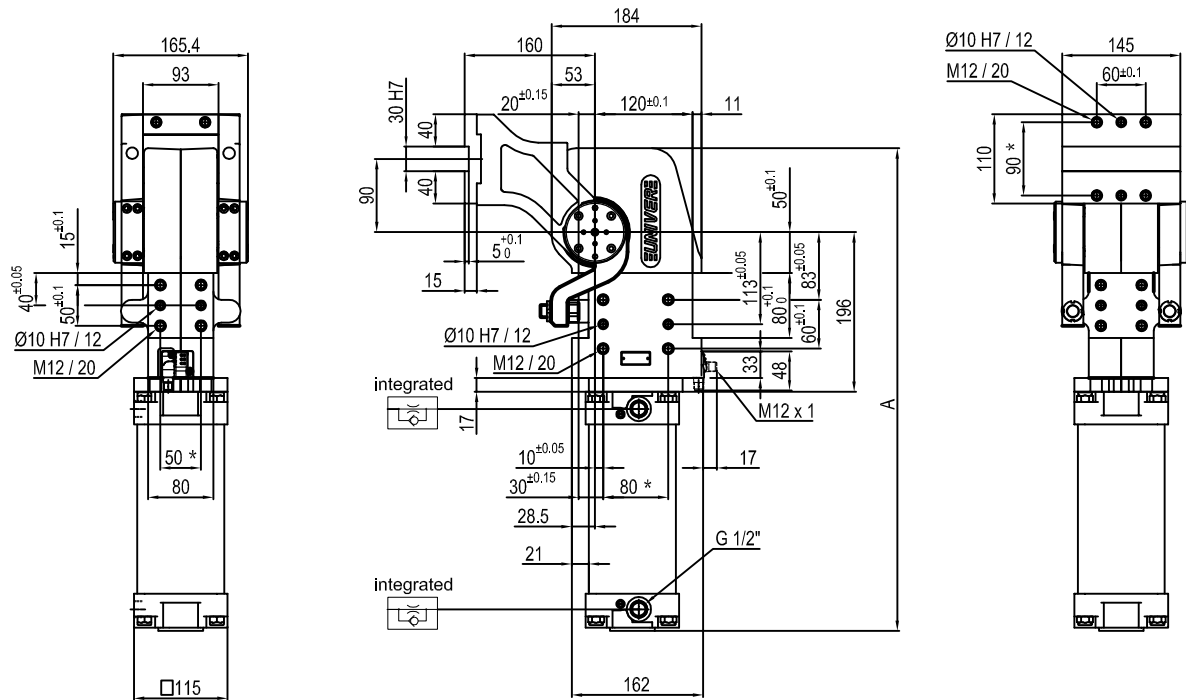
Pivot rotation in degrees	A
45°	513.5
60°	527
90°	558
120°	592.5



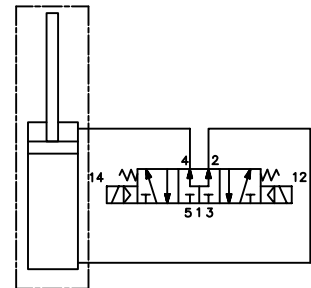
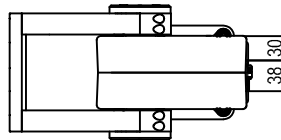
Size	Holding moment	Max. torque at the rotary table 0,55 MPa	Weight
150	6000 Nm	120 Nm	23 Kg

Min./Max. operating pressure: **0,4 / 0,6 MPa**
 Operating temperature: **5° + 45° C**
 Predetermine pivot rotation in degrees: **45° - 60° - 90° - 120°**
 Electronic sensor with M12 swivel connector that can be orientated at 0° or 90°
 Supply voltage: 10÷30 V dc
 IP code: **IP 65**

* : TOLERANCE BETWEEN DOWEL HOLES ± 0.02, TO SCREW HOLES ± 0.1



Pivot rotation in degrees	A
45°	513.5
60°	527
90°	558
120°	592.5



Size	Holding moment	Max. torque at the rotary table 0,55 MPa	Weight
150	6000 Nm	120 Nm	23 Kg

Min./Max. operating pressure: **0,4 / 0,6 MPa**

Operating temperature: **5° ± 45° C**

Predetermine pivot rotation in degrees: **45° - 60° - 90° - 120°**

Electronic sensor with M12 swivel connector that can be orientated at 0° or 90°

Supply voltage: 10÷30 V DC

IP code: **IP 65**

* : TOLERANCE BETWEEN DOWEL HOLES ± 0.02, TO SCREW HOLES ± 0.1