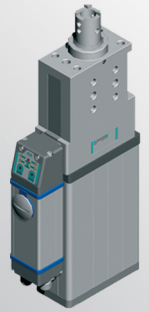


LCE350

Unità di centraggio



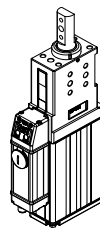
L	C	E	3	5	0	A	E	R	1	0
1			2			3	4	5	6	

1 Serie LCE = Unità di centraggio	2 Taglia 350	3 Terminale asta A = Asta per centraggi dislocati B = Asta con impronta a chiavetta C = Asta con impronta chiavetta a croce D = Asta per centraggi dislocati con fori spinta maggiorati Ø8 H7
---	------------------------	--

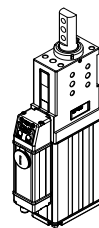
4 Orientamento asta* E = est, standard O = ovest N = nord S = sud	5 Raschiastelo R = Raschiastelo in acciaio inox	3 Modulo di controllo 10 = 1 connettore - software standard 20 = 2 connettori - software standard
--	---	--

* = solo per terminale asta A e D

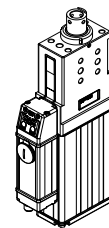
■ Terminale asta



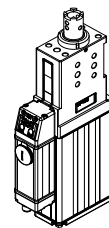
Tipo A



Tipo D



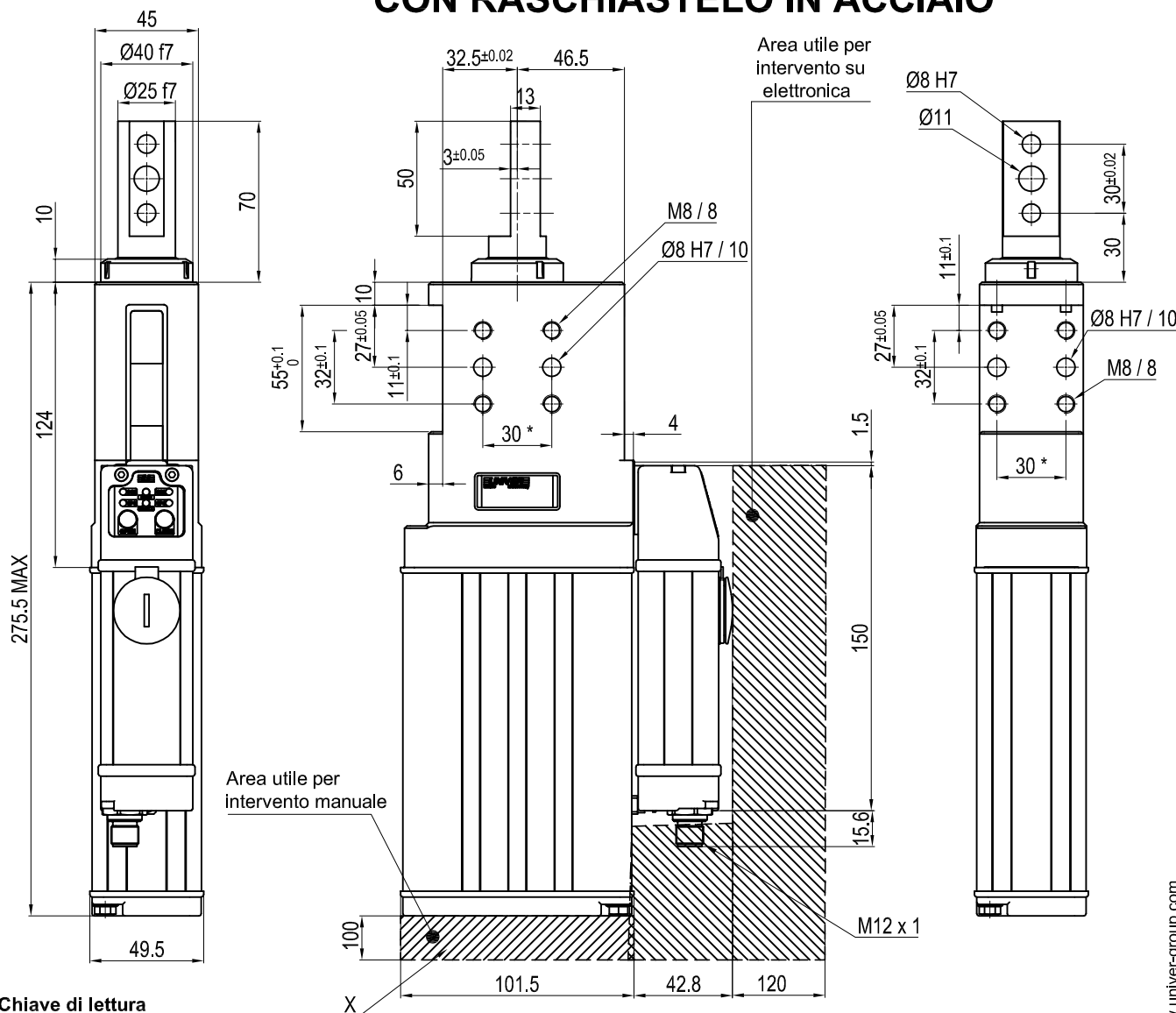
Tipo B



Tipo C



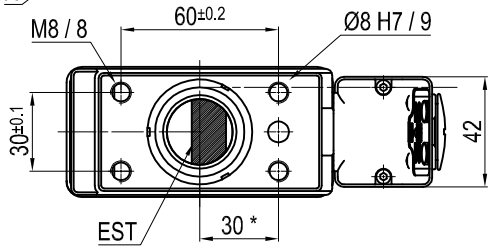
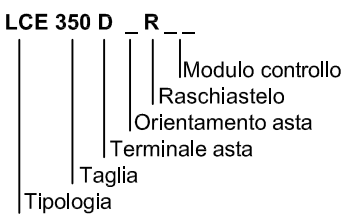
CON RASCHIASTELO IN ACCIAIO



Area utile per intervento manuale

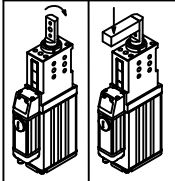
Area utile per intervento su elettronica

Chiave di lettura



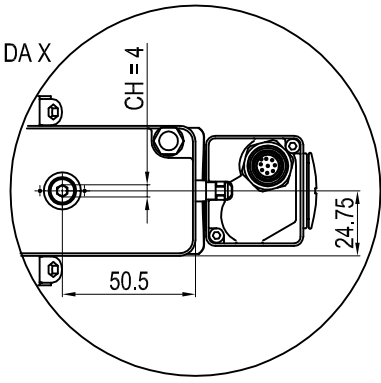
Temperatura di esercizio : 5° + 40°C
Corse in mm. : 10 - 25 - 40 - 50 - 60
Protezione : IP65

*: TOLLERANZA FORI DI CENTRAGGIO ± 0.02
TOLLERANZA FORI FILETTATI ± 0.1



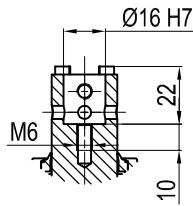
Taglia	Spinta radiale (Kg)	Spinta assiale (Kg)	Momento torcente Mt (Nm)	Momento flettente Mf (Nm)	Angolo di torsione max sullo stelo	Angolo di flessione max sullo stelo	Peso
350	15	70	6	7,5	±2'±0,03°	±2'±0,03°	2.3 Kg.

VISTA DA X

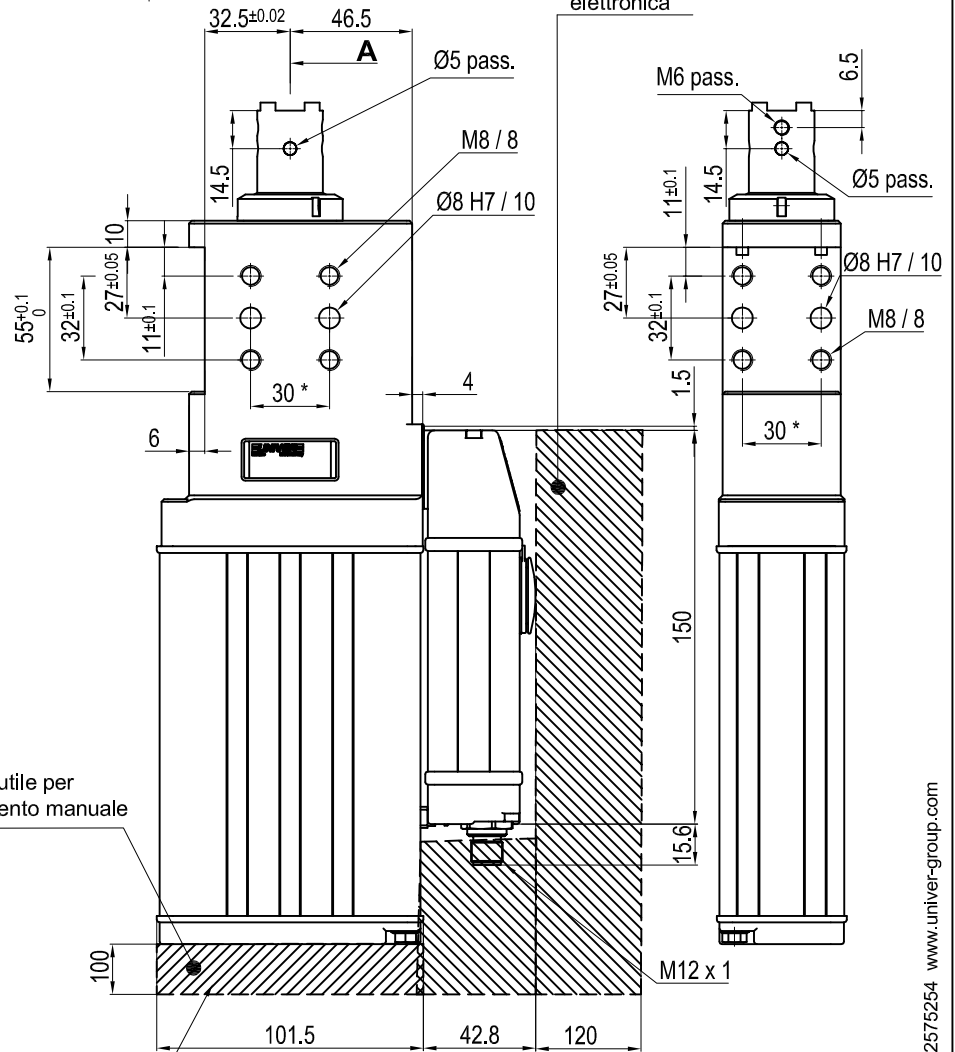
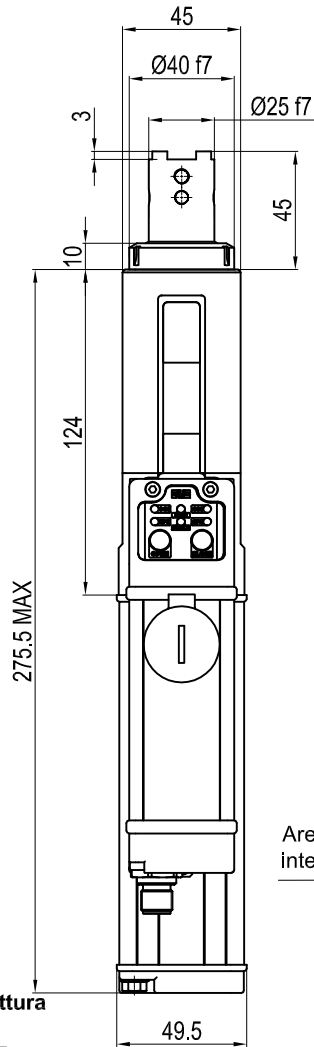


CON RASCHIASTELO IN ACCIAIO

Sez. "A-A"



* : TOLLERANZA FORI DI CENTRAGGIO ± 0.02
TOLLERANZA FORI FILETTATI ± 0.1

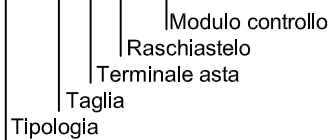


Area utile per intervento su elettronica

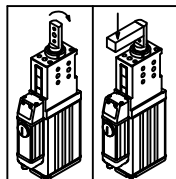
Area utile per intervento manuale

Chiave di lettura

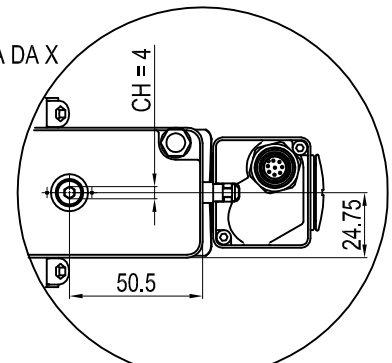
LCE 350 C R



Temperatura di esercizio : $5^{\circ} \div 40^{\circ}C$
Corse in mm. : 10 - 25 - 40 - 50 - 60
Protezione : IP65



Taglia	Spinta radiale (Kg)	Spinta assiale (Kg)	Momento torcente Mt (Nm)	Momento flettente Mf (Nm)	Angolo di torsione max sullo stelo	Angolo di flessione max sullo stelo	Peso
350	15	70	6	7,5	$\pm 2' \pm 0,03^{\circ}$	$\pm 2' \pm 0,03^{\circ}$	2,3 Kg.



VISTA DA X

