

# LAGP210

Unità rotante pneumatica



L	A	G	P	2	1	0	V	E	0	9	0	B	C	
1	2	3	4	5	6	7	8	9						

## 1 Serie

**LAG** = Unità rotante con angoli di rotazione determinanti

## 2 Versione

**P** = Pneumatica standard

## 3 Taglia

**210** = Cilindro Ø 125 mm

## 4 Posizione tavola

**V** = Verticale 180°  
**O** = Orizzontale 90°  
**Z** = Verticale, speculare alla posizione V massima apertura angolare 120°  
**P** = Orizzontale, speculare alla posizione O massima apertura angolare 60°

## 5 Sensore di posizione

**E** = Sensore elettronico con connettore M12 orientabile  
**A** = Sensore elettronico con connettore M12 orientabile + sensore elettronico per rilevamento condizione freno

## 6 Angoli di rotazione

**120** = 120°  
**090** = 90°  
**060** = 60°  
**045** = 45°

## 7 Blocco di stazionamento

**B** = Con blocco di stazionamento  
**W** = Senza blocco di stazionamento

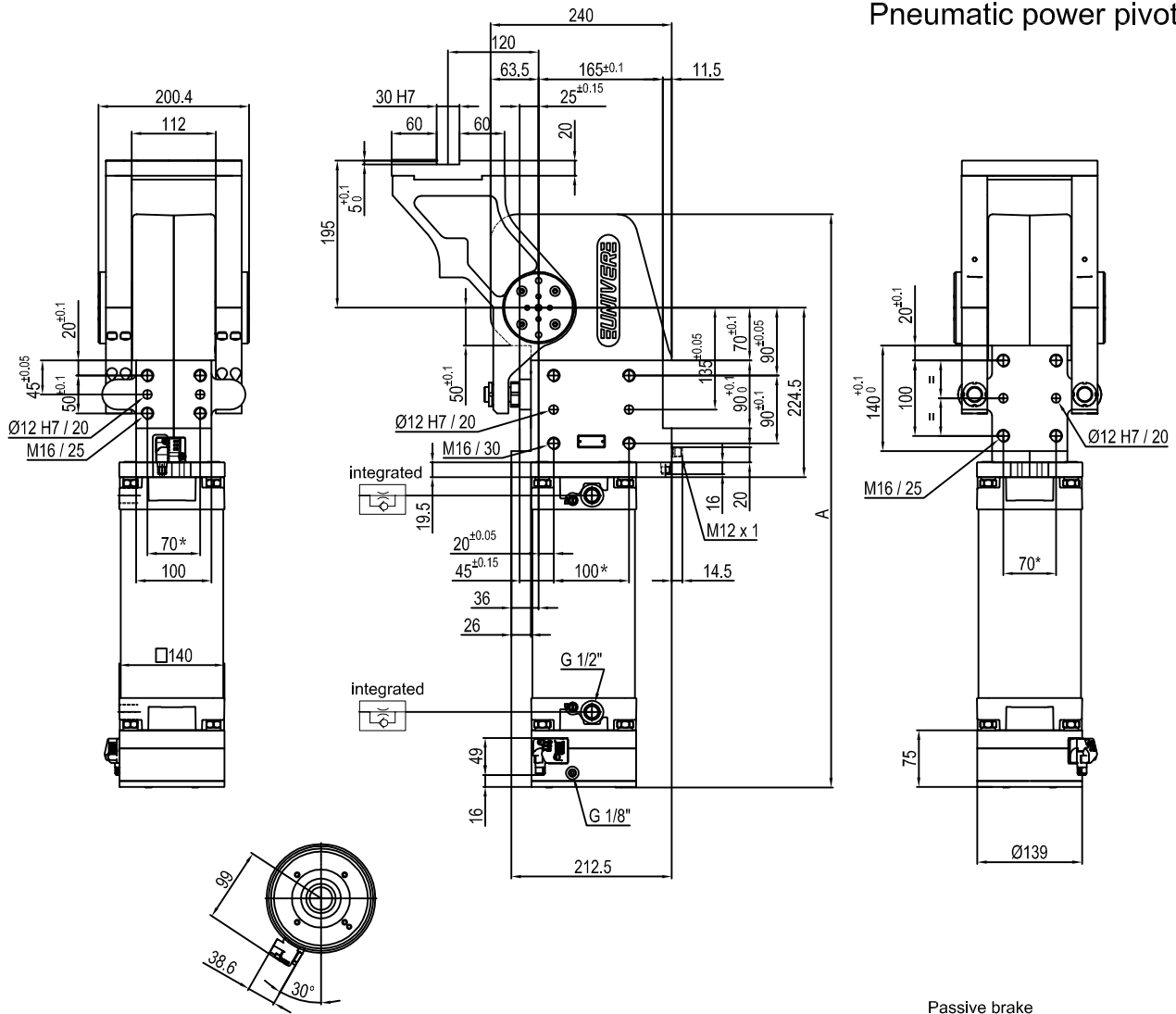
## 8 Valvola

**C** = Valvola integrata per ottimizzazione tempo ciclo

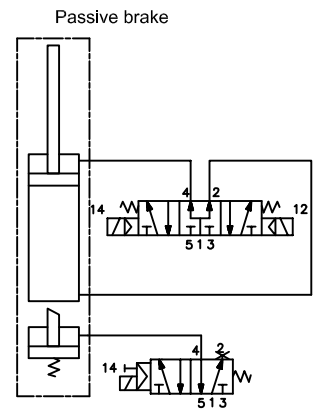
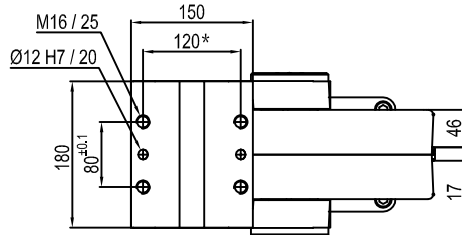
## 9 Connessioni

**\_** = Se non specificato lato sinistro (parte sinistra del sensore)  
**D** = Lato destro (parte destra del sensore)  
**F** = Frontale (di fronte al sensore)  
**P** = Posteriore (stesso lato del sensore)

## Pneumatic power pivot



Pivot rotation in degrees	A
45°	666.5
60°	682.5
90°	719
120°	759.5



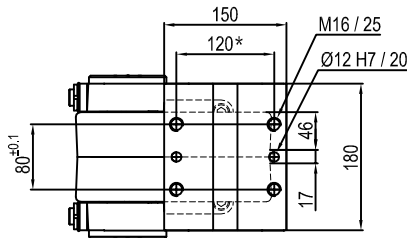
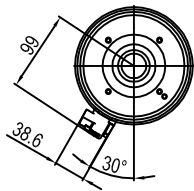
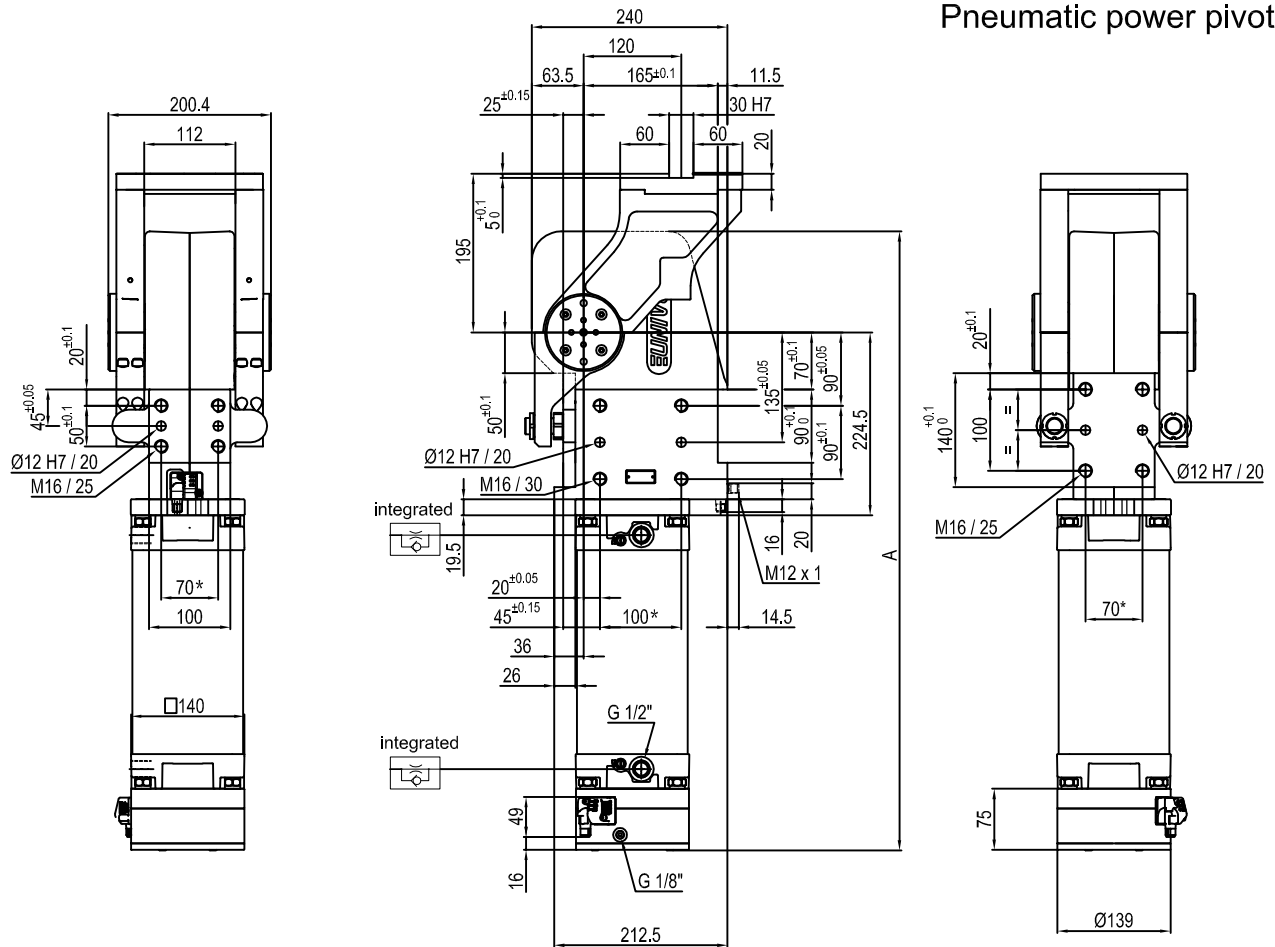
Size	Holding moment	Max. torque at the rotary table 0,55 MPa	Weight
210	8000 Nm	210 Nm	48 Kg

Min./Max. operating pressure: **0,4 / 0,6 MPa**  
 Operating temperature: **5° ± 45° C**  
 Predetermine pivot rotation in degrees: **45° - 60° - 90° - 120°**  
 Electronic sensor with M12 swivel connector that can be orientated at 0° or 90°  
 Supply voltage: 10+30 V DC  
 IP code: **IP 65**

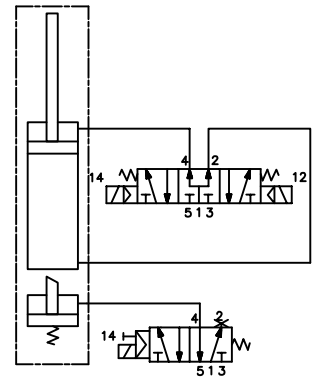
\* : TOLERANCE BETWEEN DOWEL HOLES ± 0.02, TO SCREW HOLES ± 0.1

Subject to technical modifications without notice.

## Pneumatic power pivot



### Passive brake



Pivot rotation in degrees	A
45°	666.5
60°	682.5

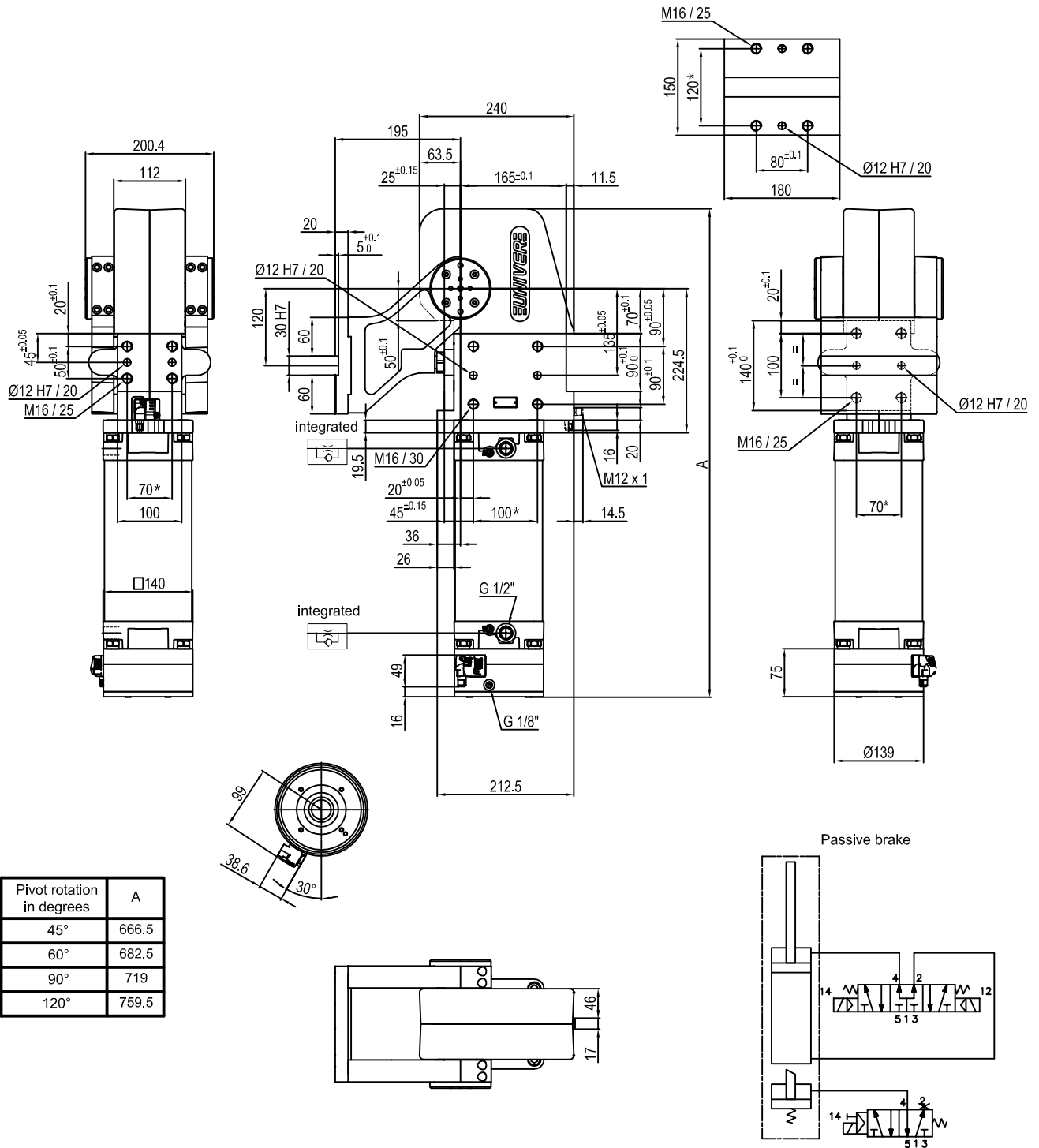
Size	Holding moment	Max. torque at the rotary table 0,55 MPa	Weight
210	8000 Nm	210 Nm	48 Kg

Min./Max. operating pressure: **0,4 / 0,6 MPa**  
 Operating temperature: **5° + 45° C**  
 Predetermine pivot rotation in degrees: **45° - 60°**  
 Electronic sensor with M12 swivel connector that can be orientated at 0° or 90°  
 Supply voltage: 10\*30 V DC  
 IP code: **IP 65**

\* : TOLERANCE BETWEEN DOWEL HOLES ± 0.02, TO SCREW HOLES ± 0.1

Subject to technical modifications without notice.

## Pneumatic power pivot



Pivot rotation in degrees	A
45°	666.5
60°	682.5
90°	719
120°	759.5

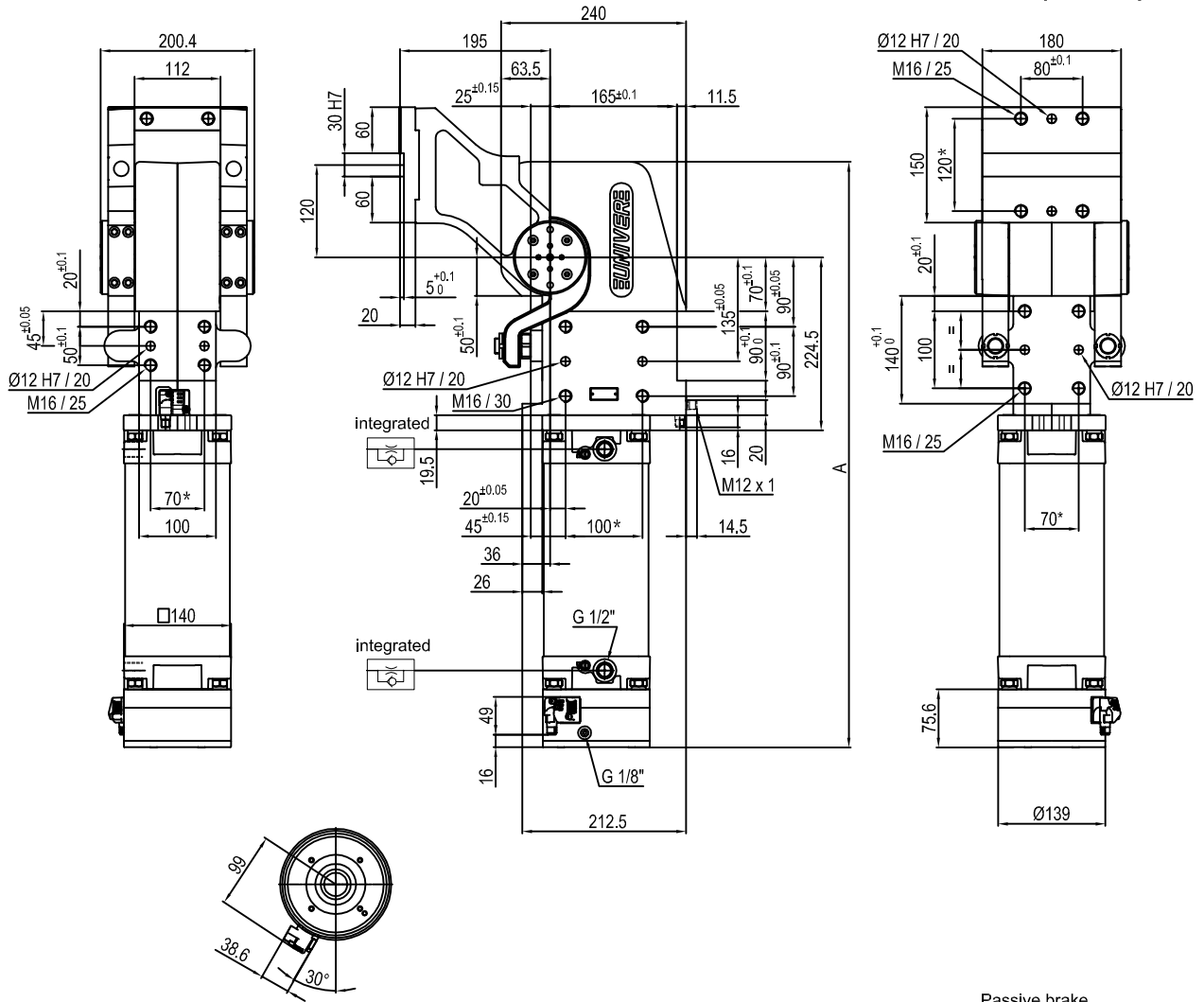
Size	Holding moment	Max. torque at the rotary table 0,55 MPa	Weight
210	8000 Nm	210 Nm	48 Kg

Min./Max. operating pressure: **0,4 / 0,6 MPa**  
 Operating temperature: **5° ± 45° C**  
 Predetermine pivot rotation in degrees: **45° - 60° - 90° - 120°**  
 Electronic sensor with M12 swivel connector that can be orientated at 0° or 90°  
 Supply voltage: 10+30 V DC  
 IP code: **IP 65**

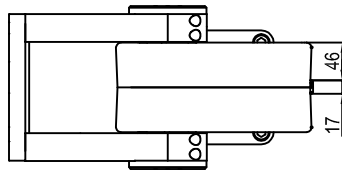
\* : TOLERANCE BETWEEN DOWEL HOLES ± 0,02, TO SCREW HOLES ± 0,1

Subject to technical modifications without notice.

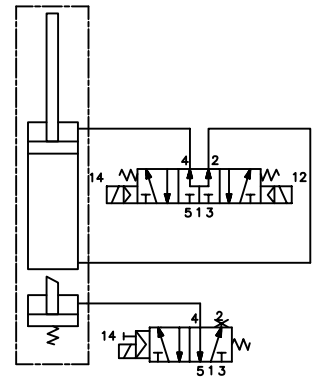
## Pneumatic power pivot



Pivot rotation in degrees	A
45°	666.5
60°	682.5
90°	719
120°	759.5



## Passive brake



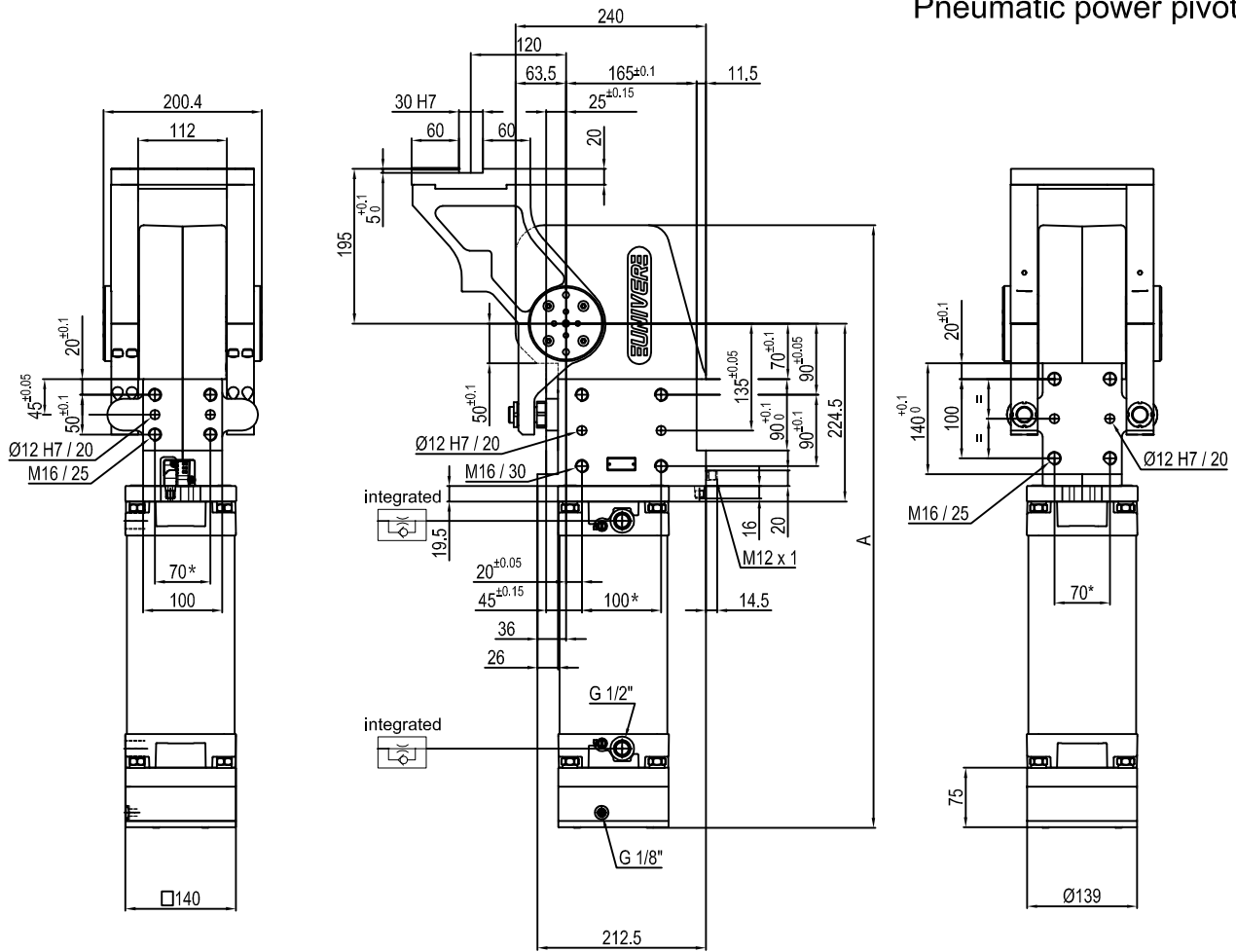
Size	Holding moment	Max. torque at the rotary table 0,55 MPa	Weight
210	8000 Nm	210 Nm	48 Kg

Min./Max. operating pressure: **0,4 / 0,6 MPa**  
 Operating temperature: **5° + 45° C**  
 Predetermine pivot rotation in degrees: **45° - 60° - 90° - 120°**  
 Electronic sensor with M12 swivel connector that can be orientated at 0° or 90°  
 Supply voltage: 10+30 V DC  
 IP code: **IP 65**

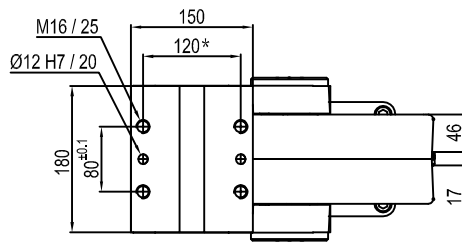
\* : TOLERANCE BETWEEN DOWEL HOLES ± 0.02, TO SCREW HOLES ± 0.1

Subject to technical modifications without notice.

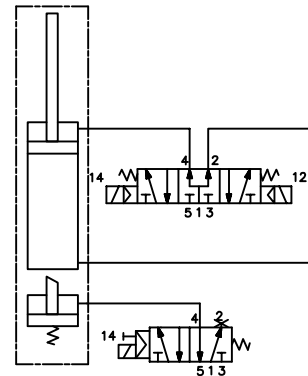
## Pneumatic power pivot



Pivot rotation in degrees	A
45°	666.5
60°	682.5
90°	719
120°	759.5



Passive brake



Size	Holding moment	Max. torque at the rotary table 0,55 MPa	Weight
210	8000 Nm	210 Nm	48 Kg

Min./Max. operating pressure: 0,4 / 0,6 MPa

Operating temperature: 5° + 45° C

Predetermine pivot rotation in degrees: 45° - 60° - 90° - 120°

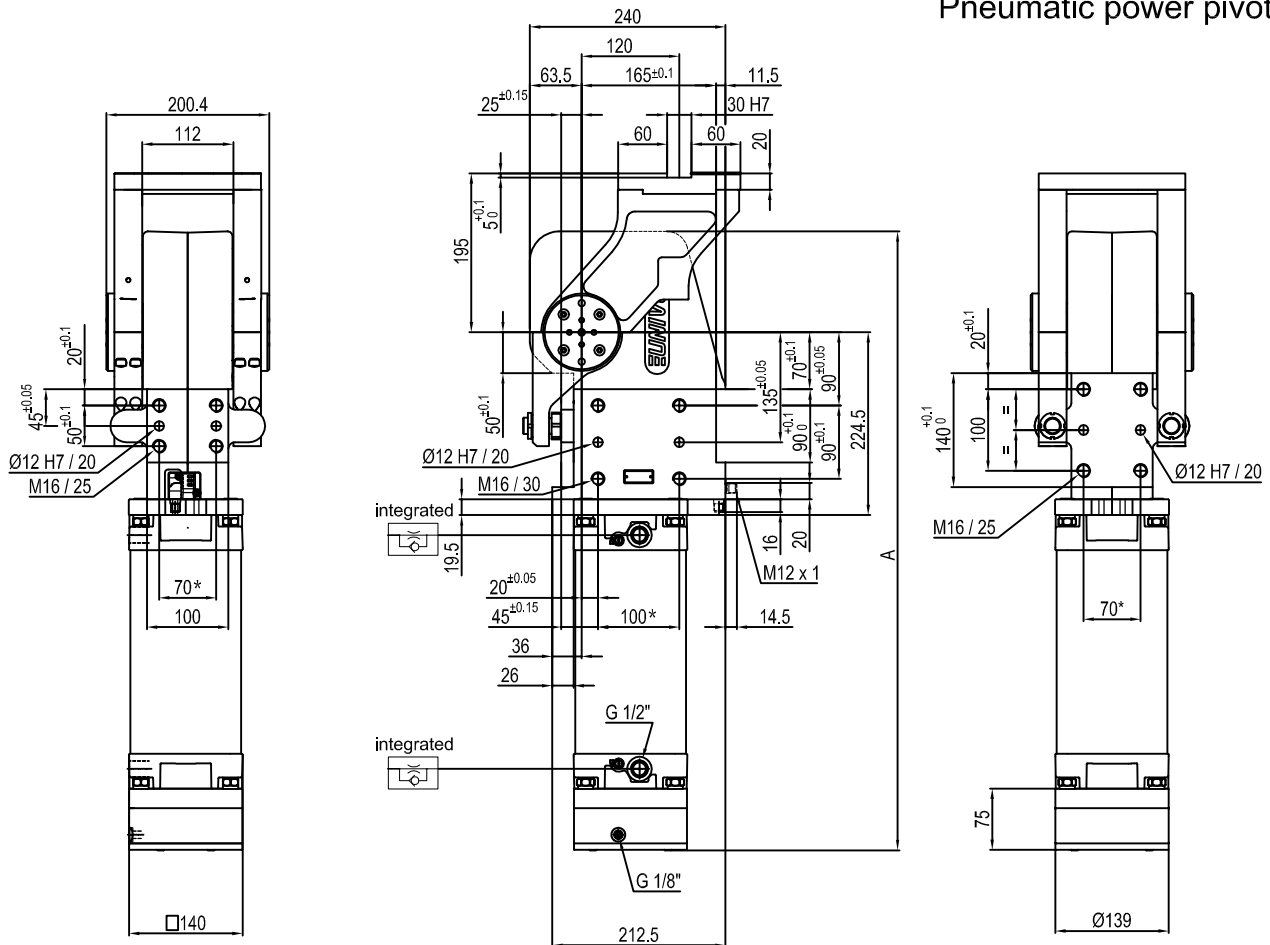
Electronic sensor with M12 swivel connector that can be orientated at 0° or 90°

Supply voltage: 10÷30 V DC

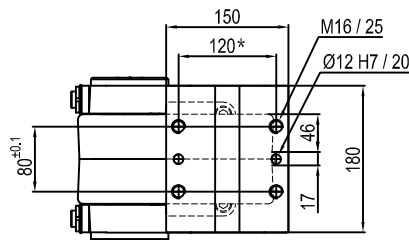
IP code: IP 65

\* : TOLERANCE BETWEEN DOWEL HOLES ± 0.02, TO SCREW HOLES ± 0.1

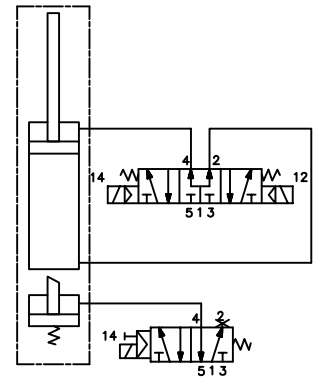
## Pneumatic power pivot



Pivot rotation in degrees	A
45°	666.5
60°	682.5



Passive brake



Size	Holding moment	Max. torque at the rotary table 0,55 MPa	Weight
210	8000 Nm	210 Nm	48 Kg

Min./Max. operating pressure: 0,4 / 0,6 MPa

Operating temperature: 5° + 45° C

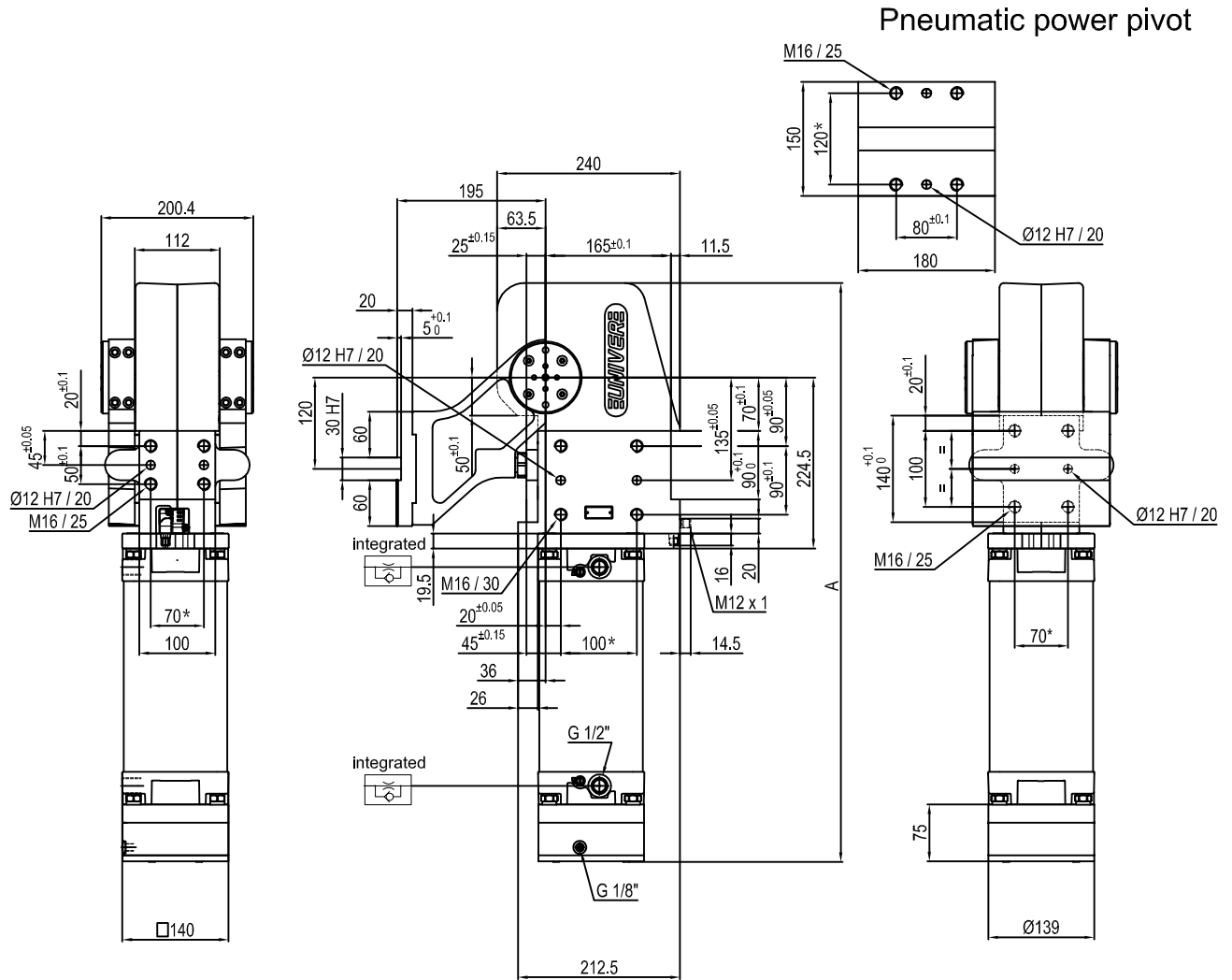
Predetermine pivot rotation in degrees: 45° - 60°

Electronic sensor with M12 swivel connector that can be orientated at 0° or 90°

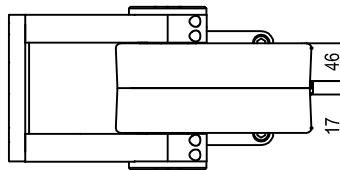
Supply voltage: 10÷30 V DC

IP code: IP 65

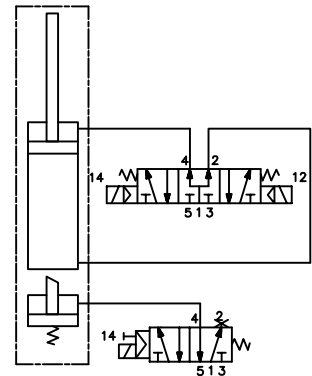
\* : TOLERANCE BETWEEN DOWEL HOLES ± 0.02, TO SCREW HOLES ± 0.1



Pivot rotation in degrees	A
45°	666.5
60°	682.5
90°	719
120°	759.5



Passive brake



Size	Holding moment	Max. torque at the rotary table 0,55 MPa	Weight
210	8000 Nm	210 Nm	48 Kg

Min./Max. operating pressure: 0,4 / 0,6 MPa

Operating temperature: 5° + 45° C

Predetermine pivot rotation in degrees: 45° - 60° - 90° - 120°

Electronic sensor with M12 swivel connector that can be orientated at 0° or 90°

Supply voltage: 10÷30 V DC

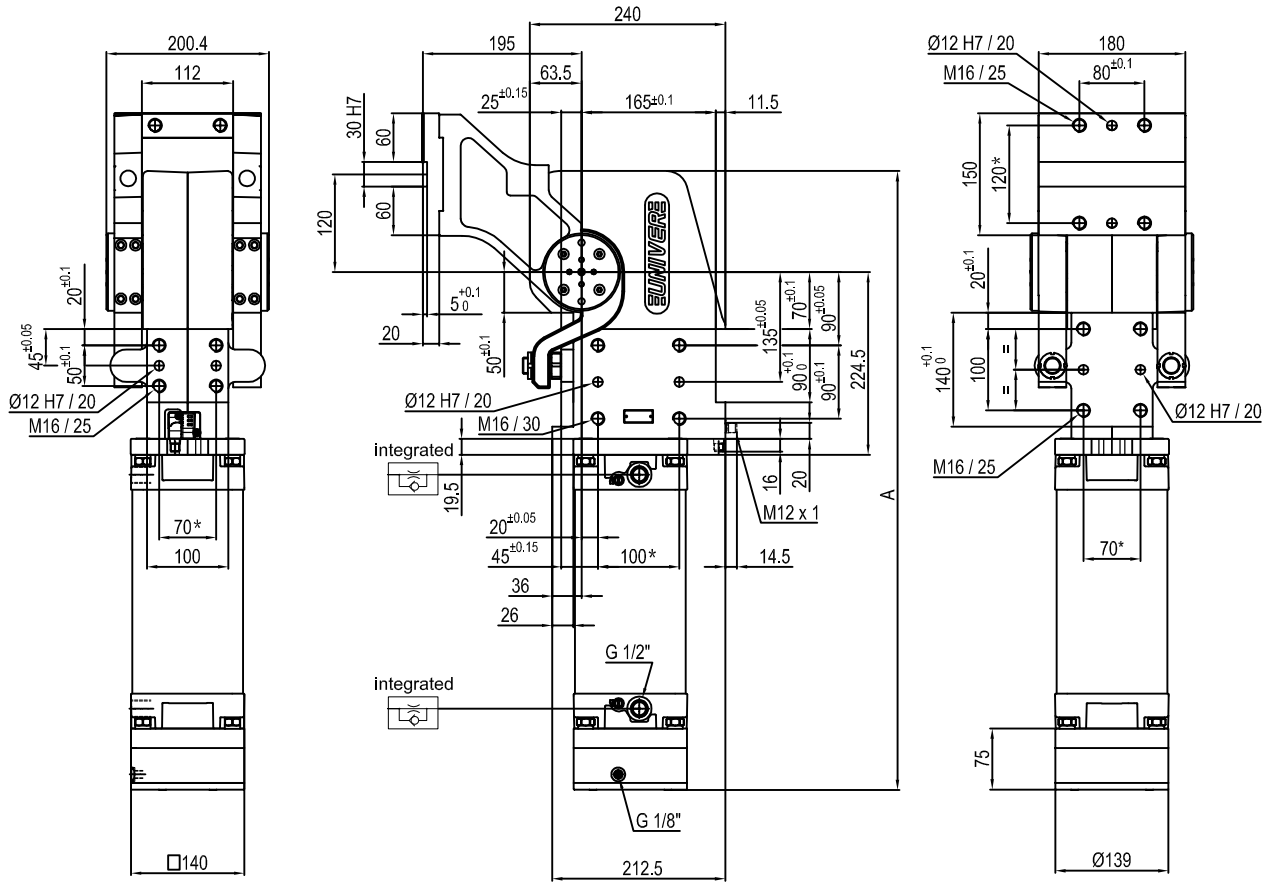
IP code: IP 65

\* : TOLERANCE BETWEEN DOWEL HOLES ± 0.02, TO SCREW HOLES ± 0.1

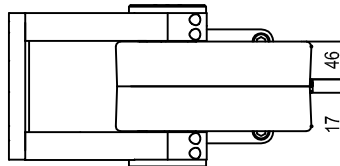
Subject to technical modifications without notice.



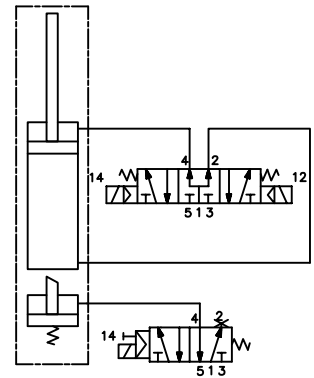
## Pneumatic power pivot



Pivot rotation in degrees	A
45°	666.5
60°	682.5
90°	719
120°	759.5



## Passive Safety brake



Size	Holding moment	Max. torque at the rotary table 0,55 MPa	Weight
210	8000 Nm	210 Nm	48 Kg

Min./Max. operating pressure: **0,4 / 0,6 MPa**

Operating temperature: **5° + 45° C**

Predetermine pivot rotation in degrees: **45° - 60° - 90° - 120°**

Electronic sensor with M12 swivel connector that can be orientated at 0° or 90°

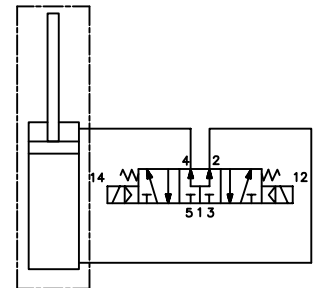
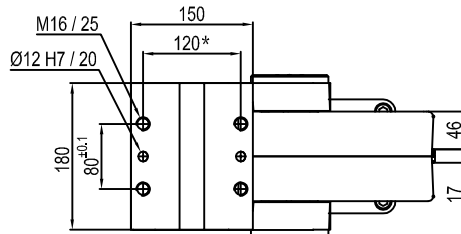
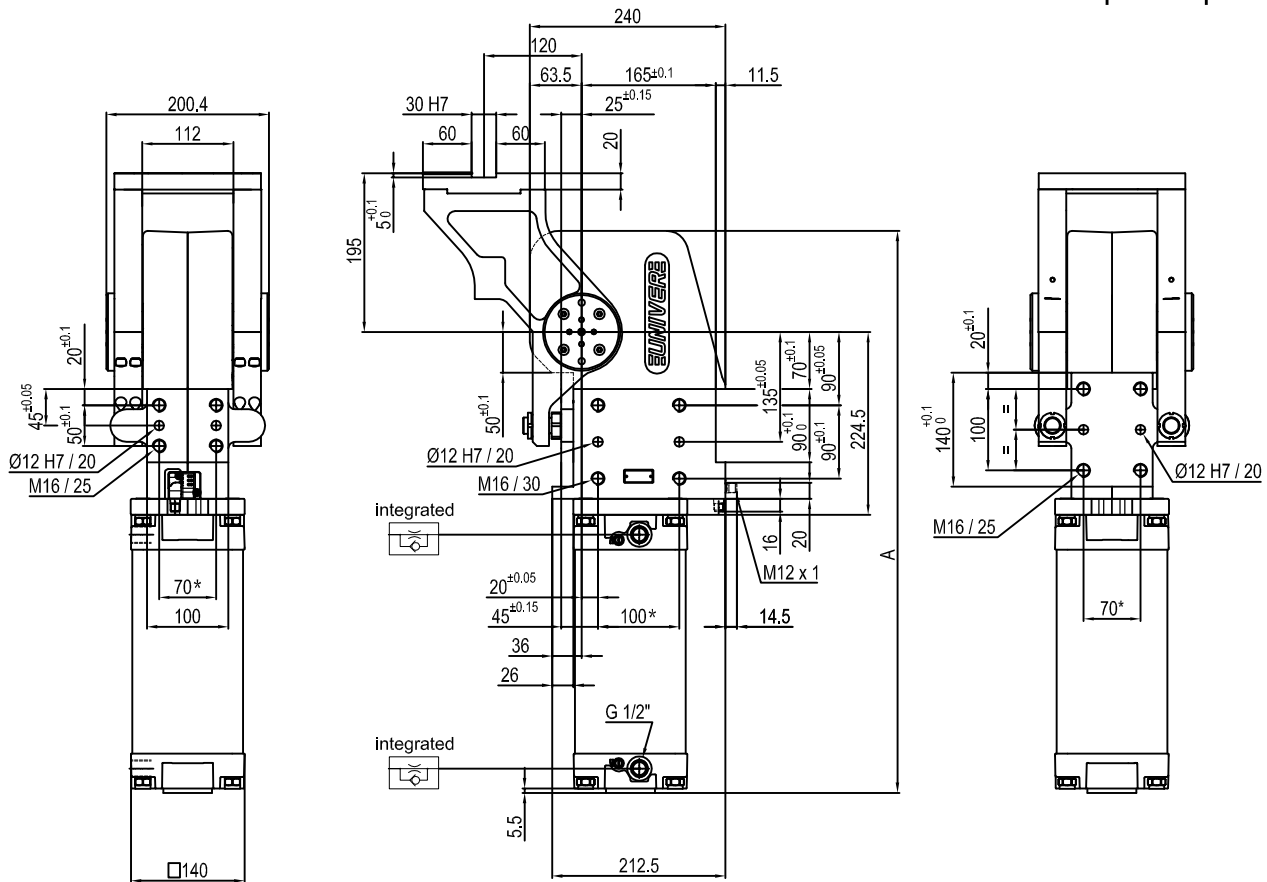
Supply voltage: 10÷30 V DC

IP code: **IP 65**

\* : TOLERANCE BETWEEN DOWEL HOLES ± 0.02, TO SCREW HOLES ± 0.1

Subject to technical modifications without notice.

## Pneumatic power pivot



Pivot rotation in degrees	A
45°	597
60°	613
90°	649.5
120°	690

Size	Holding moment	Max. torque at the rotary table 0,55 MPa	Weight
210	8000 Nm	210 Nm	43 Kg

Min./Max. operating pressure: **0,4 / 0,6 MPa**

Operating temperature: **5° ± 45° C**

Predeterminate pivot rotation in degrees: **45° - 60° - 90° - 120°**

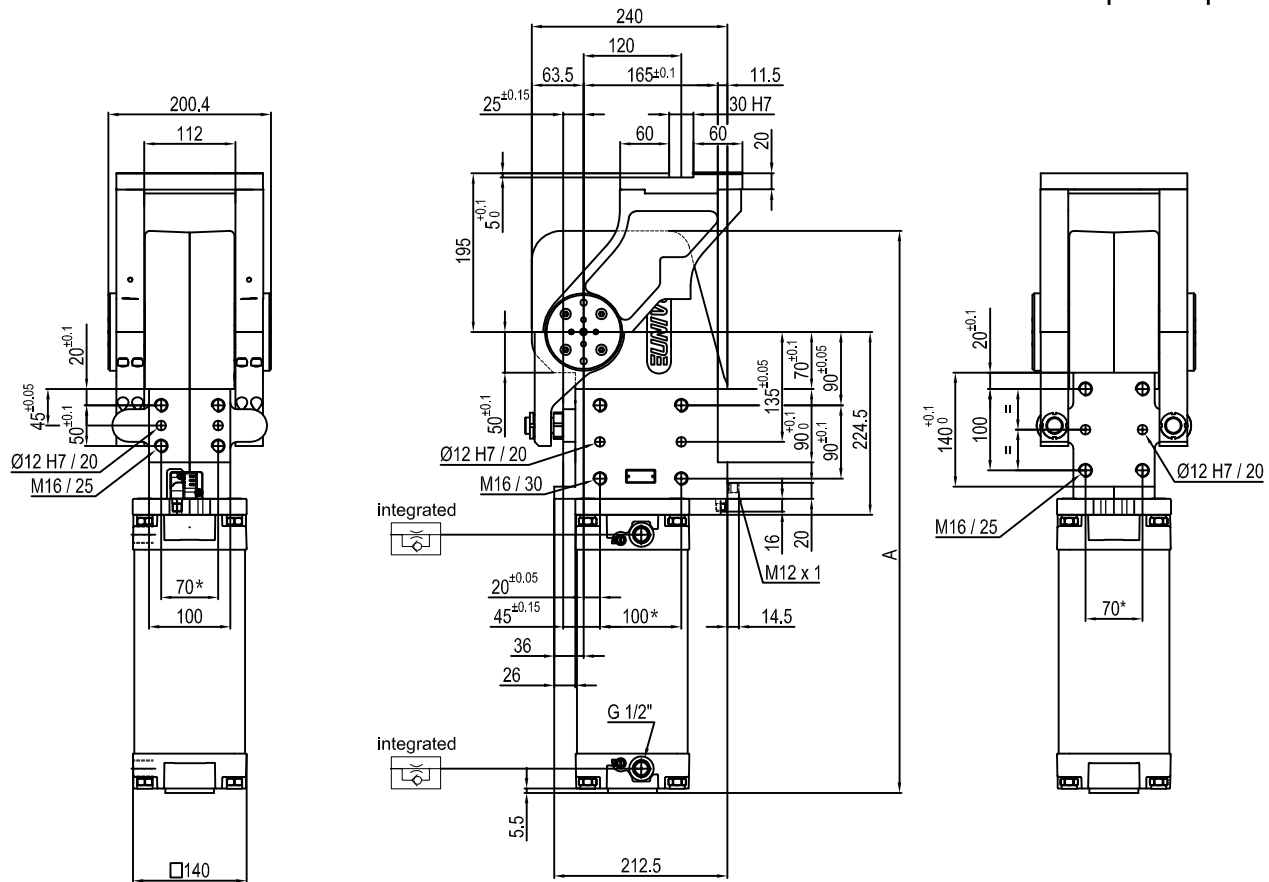
Electronic sensor with M12 swivel connector that can be orientated at 0° or 90°

Supply voltage: 10÷30 V DC

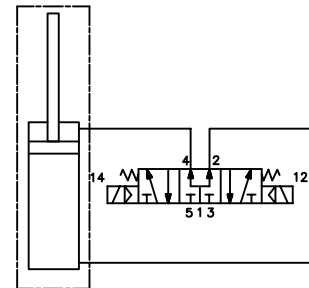
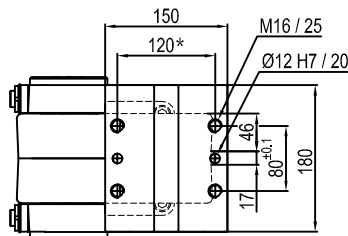
IP code: **IP 65**

\* : TOLERANCE BETWEEN DOWEL HOLES ± 0.02, TO SCREW HOLES ± 0.1

Subject to technical modifications without notice.



Pivot rotation in degrees	A
45°	597
60°	613



Size	Holding moment	Max. torque at the rotary table 0,55 MPa	Weight
210	8000 Nm	210 Nm	43 Kg

Min./Max. operating pressure: **0,4 / 0,6 MPa**

Operating temperature: **5° ± 45° C**

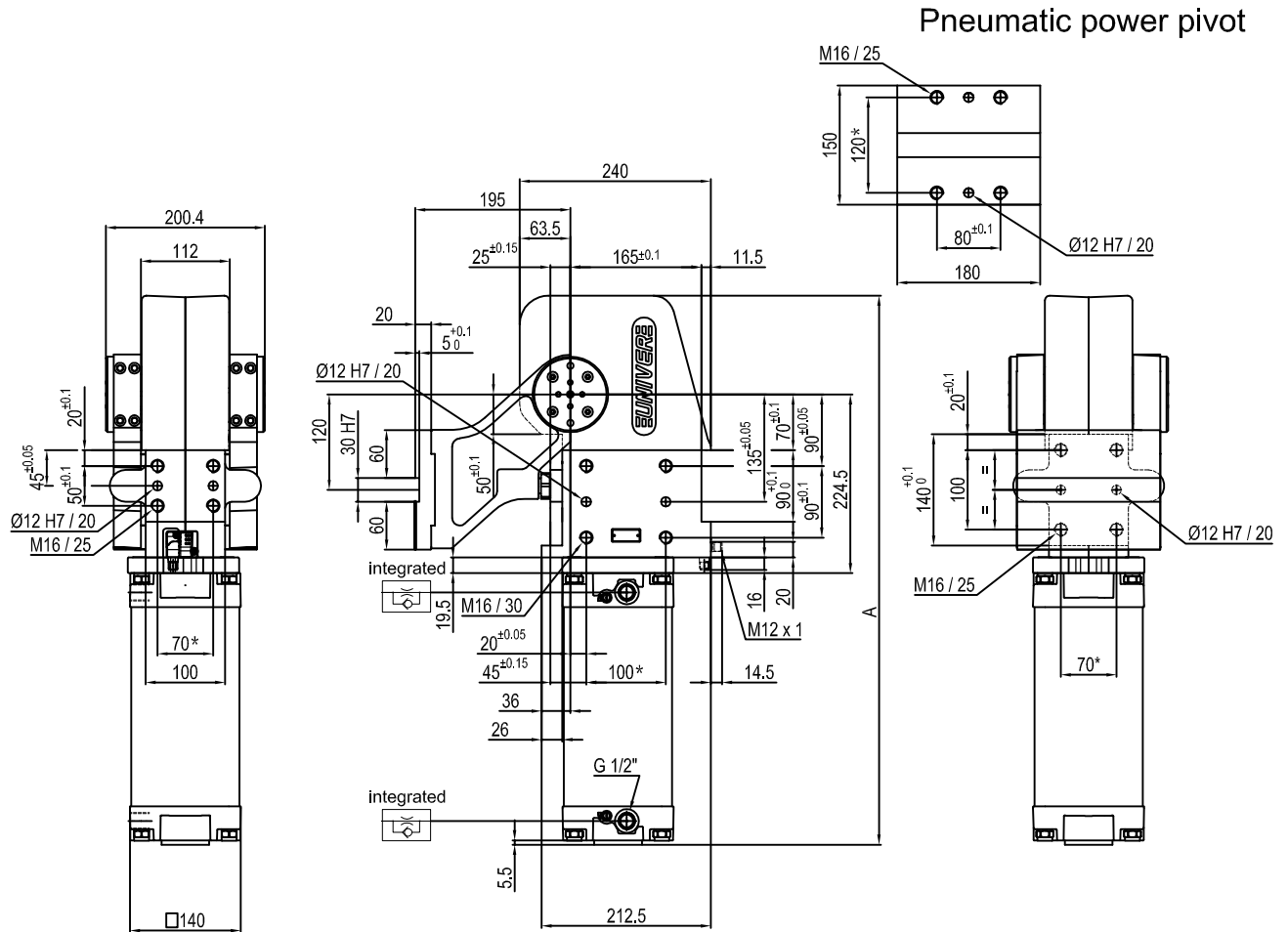
Predeterminate pivot rotation in degrees: **45° - 60°**

Electronic sensor with M12 swivel connector that can be orientated at 0° or 90°

Supply voltage: 10÷30 V DC

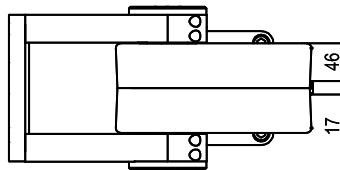
IP code: **IP 65**

\* : TOLERANCE BETWEEN DOWEL HOLES ± 0.02, TO SCREW HOLES ± 0.1

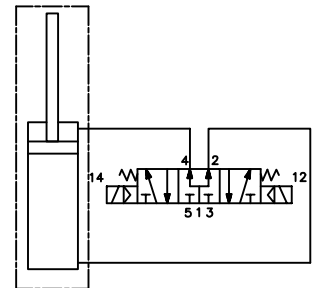


Pneumatic power pivot

Pivot rotation in degrees	A
45°	597
60°	613
90°	649.5
120°	690



Passive Safety brake:  
it stops in absence of signal  
conforming to 89/392/CEE  
Directive



Size	Holding moment	Max. torque at the rotary table 0,55 MPa	Weight
210	8000 Nm	210 Nm	43 Kg

Min./Max. operating pressure: 0,4 / 0,6 MPa

Operating temperature: 5° + 45° C

Predeterminate pivot rotation in degrees: 45° - 60° - 90° - 120°

Electronic sensor with M12 swivel connector that can be orientated at 0° or 90°

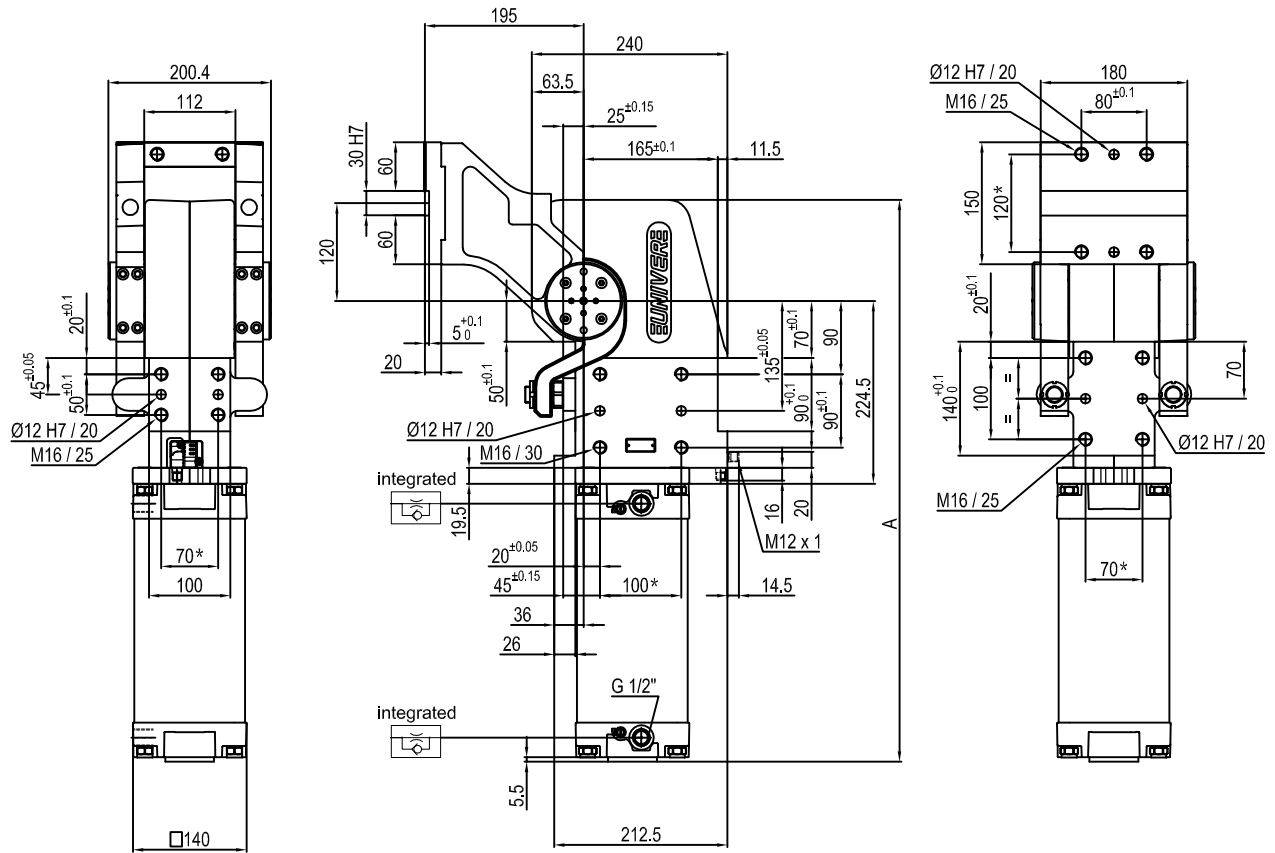
Supply voltage: 10÷30 V DC

IP code: IP 65

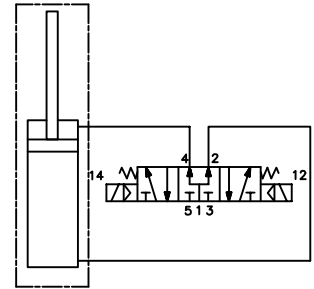
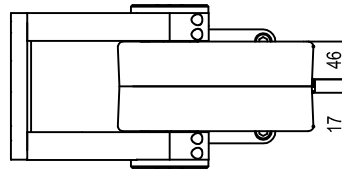
\* : TOLERANCE BETWEEN DOWEL HOLES ± 0.02, TO SCREW HOLES ± 0.1

Subject to technical modifications without notice.

## Pneumatic power pivot



Pivot rotation in degrees	A
45°	597
60°	613
90°	649.5
120°	690



Size	Holding moment	Max. torque at the rotary table 0,55 MPa	Weight
210	8000 Nm	210 Nm	43 Kg

Min./Max. operating pressure: **0,4 / 0,6 MPa**

Operating temperature: **5° ± 45° C**

Predeterminate pivot rotation in degrees: **45° - 60° - 90° - 120°**

Electronic sensor with M12 swivel connector that can be orientated at 0° or 90°

Supply voltage: 10÷30 V DC

IP code: **IP 65**

\* : TOLERANCE BETWEEN DOWEL HOLES ± 0.02, TO SCREW HOLES ± 0.1

Subject to technical modifications without notice.