

LCQ

Unità di centraggio

L	C	Q	5	0	0	5	0	E	1	2	R
1	2	3	4		5	6		7			

1 Serie	2 Versione	3 Taglia
----------------	-------------------	-----------------

LC = Unità di centraggio

Q = Pneumatica con azionamento manuale

50 = Ø 50 mm
63 = Ø 63 mm

4 Corsa	5 Sensore di posizione	6 Ø interno asta
----------------	-------------------------------	-------------------------

025 = 25 mm
050 = 50 mm

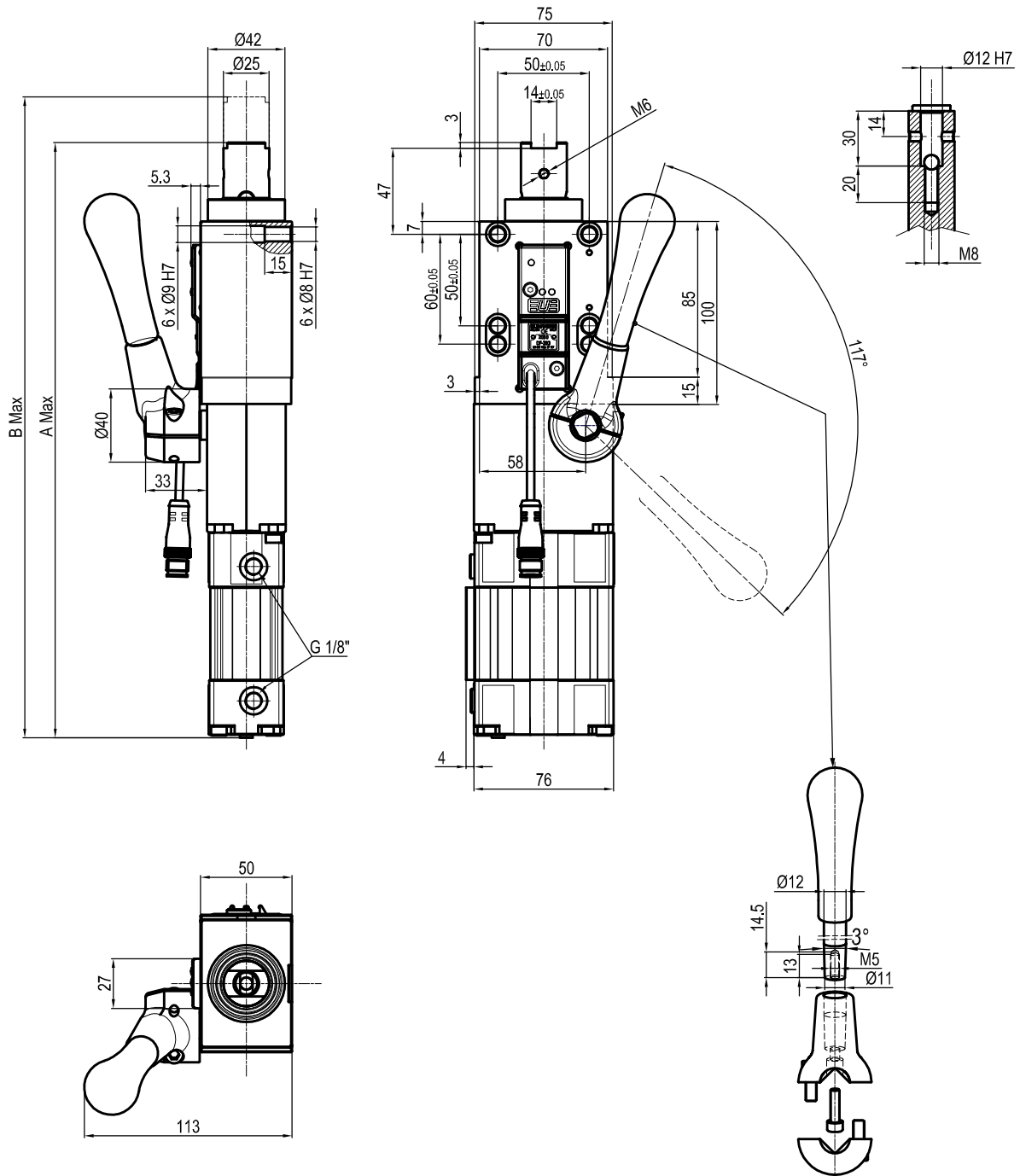
E = Sensore elettronico

12 = Ø 12 mm
20 = Ø 20 mm

7 Raschiastelo

R = raschiastelo in acciaio inox

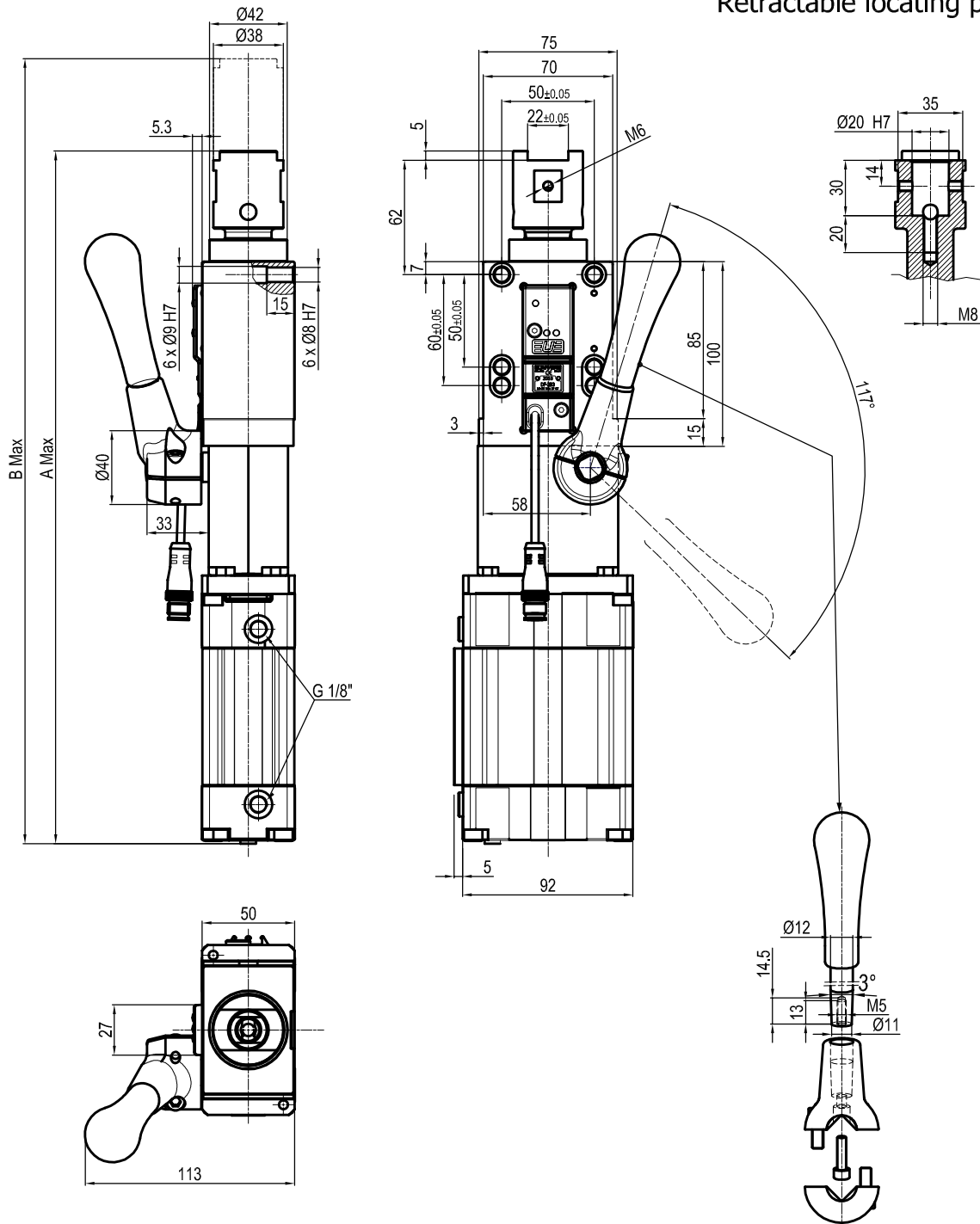
Retractable locating pin unit



ROD'S INNER Ø20					
CYLINDER Ø	STROKE	WEIGHT	A	B	
CYLINDER Ø50	25 mm	3,1 Kg	325 mm	350 mm	
CYLINDER Ø50	50 mm	3,2 Kg	350 mm	400 mm	

Min./max. operating pressure: **0,4 / 0,8 MPa**
 Operating temperature: **5° + 45° C**
 Electronic sensor with M12
 Supply voltage: 10+30 Vdc
 IP code: **IP 65**
 Pneumatic ports on both sides

Retractable locating pin unit



ROD'S INNER Ø20				
CYLINDER Ø	STROKE	WEIGHT	A	B
CYLINDER Ø63	25 mm	3,5 Kg	350 mm	375 mm
CYLINDER Ø63	50 mm	3,6 Kg	375 mm	425 mm

Min./max. operating pressure: **0,4 / 0,8 MPa**
 Operating temperature: **5° + 45° C**
 Electronic sensor with M12
 Supply voltage: 10+30 Vdc
 IP code: **IP 65**
 Pneumatic ports on both sides