

INTEGRATED SUB-BASE

MANIFOLD valve with no sub-base

REDUCED DIMENSIONS

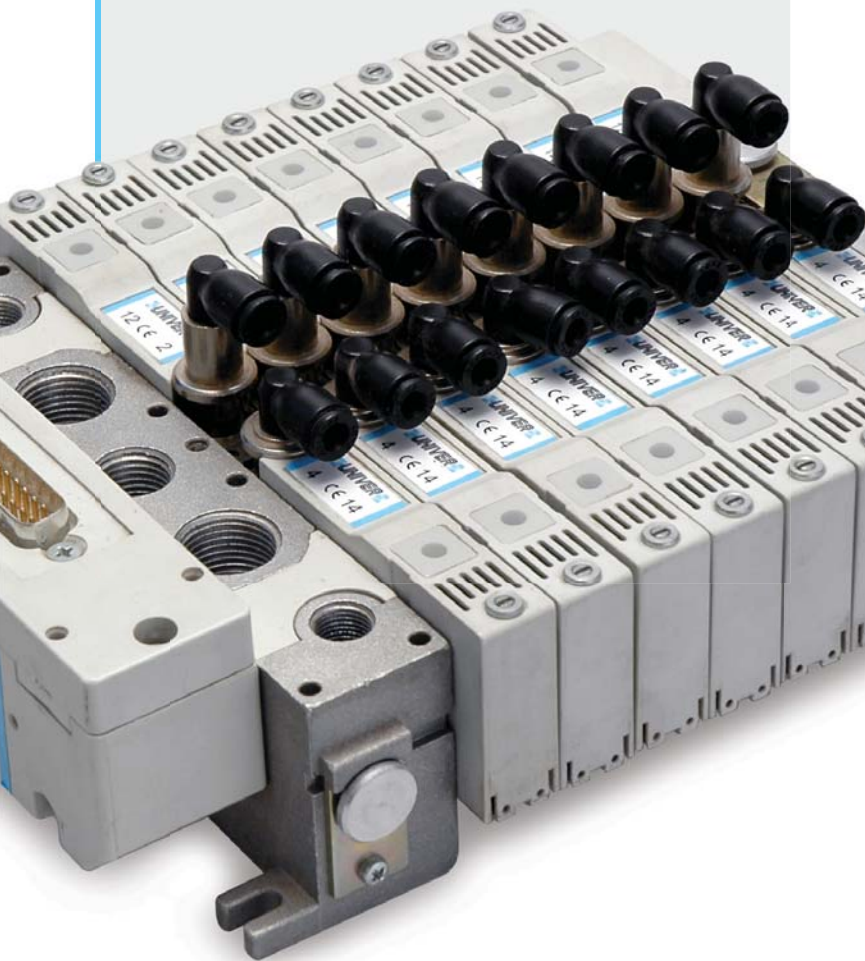
Space saving up to 30% in comparison with standard valve MANIFOLDS

HIGH FLOW RATE

830 NI/min spool system UNIVER Original

READY TO USE

Prewired configurations of 2 to 20 valves for a quick installation



PSC

Single electrical connection



PSP

Multipolar connection



PSR

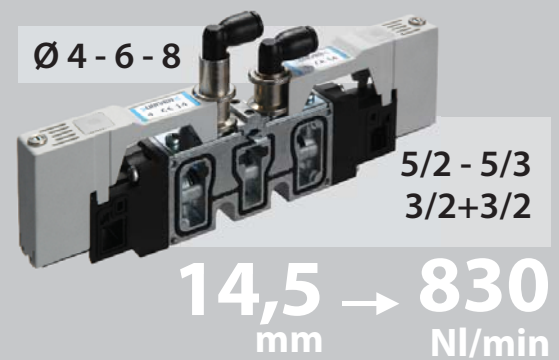
Pneumatic operation connection



REDUCED DIMENSIONS



MANIFOLD VALVE without sub-base



CHARACTERISTICS

| | |
|----------------------------|---|
| Ambient temperature | -5 ÷ +50 °C (PSC-PSP), -15 ÷ +50 °C (PSR) |
| Fluid | 10 µm filtered air, with or without lubrication |
| Commutation system | spool |
| Max pressure | 9 bar (electrical control), 10 bar (pneumatic control) |
| Nominal bore (mm) | 6 |
| Nominal flow rate (NI/min) | depending on the type of fittings (see table) |
| Connections | tube Ø 4, 6, 8 |
| Valve body | zamak |
| Seals | NBR |
| Spool | aluminium |
| Electropilot/Coil | B series/U04 |
| Power consumption | 1,35 W |
| Voltage | 24 V DC (12 V DC upon request) |
| Protection degree | IP65 |
| Manual override | recessed button - 1 position (PSC), impulse screw - 1-2 positions (PSP) |



Nominal flow rate (NI/min)

| | Ø4 | Ø6 | Ø8 |
|------------------|-----|-----|-----|
| Straight fitting | 200 | 510 | 830 |
| Elbow fitting | 140 | 370 | 700 |

CODIFICATION KEY



| 1 Series | 2 Type | 3 Control 14 | 4 Return 12 | 5 Voltage and coil |
|---|---|---|---|---|
| PSC = Separate wires PSP = Plug-in PSR = Pneumatic | 2 = 5/2 3 = 5/3 c.c. 4 = 5/3 o.c. 5 = 5/3 p.c. 6 = 3/2+3/2 NC-NC 7 = 3/2+3/2 NC-NO 8 = 3/2+3/2 NO-NO | 2 = Pneumatic amplified 6 = Electrical amplified | 0 = Pneumatic spring 1 = Mechanical spring 2 = Pneumatic amplified 3 = Pneumatic not amplified 6 = Electrical amplified 7 = Electrical not amplified | Only for PSC and PSP series, assembled coils with standard supplied led 24 = 24 V (standard) 12 = 12 V (upon request) |

c.c. = closed centres o.c. = open centres p.c. = pressurized centres

PSC Electrical impulse - Electrical connection with separate wires

■ Single impulse

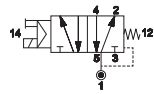
PSC26024
PSC26124

■ Double impulse

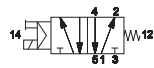
PSC26624
PSC36624
PSC46624
PSC56624
PSC66624
PSC76624
PSC86624

PSP Electrical impulse - Plug-in integrated electrical connection

Single impulse

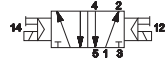


PSP26024



PSP26124

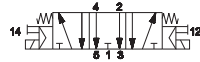
Double impulse



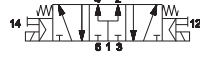
PSP26624



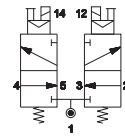
PSP36624



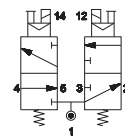
PSP46624



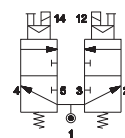
PSP56624



PSP66624



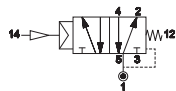
PSP76624



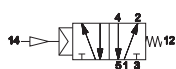
PSP86624

PSR Pneumatic impulse - Pneumatic operation

Single impulse

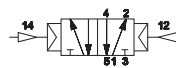


PSR220



PSR221

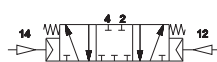
Double impulse



PSR222



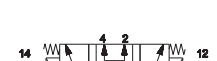
PSR223



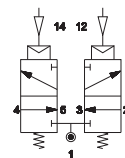
PSR322



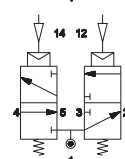
PSR422



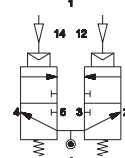
PSR522



PSR622



PSR722



PSR822

PSC Manifold with single electrical connection

- With 26 mm inlet plate and 14,5 mm end plate with DIN rail (EN50022)



- With 14,5 mm inlet and end plate



PSP Manifold with multipolar connection

- With 26 mm inlet plate and 14,5 mm end plate with multipolar connector



- With 26 mm inlet plate and 14,5 mm end plate with multipolar connector and intermediate plate



PSR Manifold with pneumatic operation

- With 26 mm inlet plate and 14,5 mm end plate



PS14100

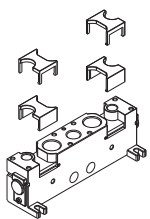
PS14200

PS15000

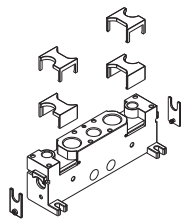
PS15100

PS15200

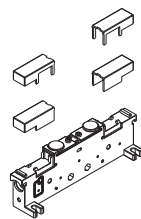
PS15300*



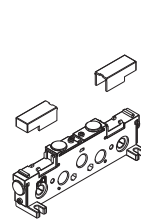
26 mm inlet plate
internal pilot supply



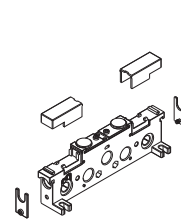
26 mm inlet plate
external pilot supply



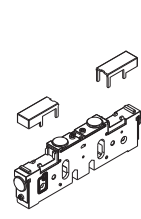
blank plate



14,5 mm inlet plate
internal pilot supply



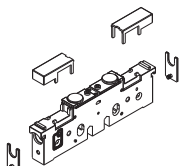
14,5 mm inlet plate
external pilot supply



14,5 mm intermediate
plate, closed air supply,
open exhausts

| PS15310* | PS15320* | PS15330* | PS15340 | PS15350 | PS15360 |
|--|----------------------------------|---------------------------------|--|--|--|
| | | | | | |
| 14,5 mm intermediate plate, open supply, closed exhausts | 14,5 mm intermediate blank plate | 14,5 mm intermediate open plate | intermediate supply plate with closed exhausts and internal pilot supply | intermediate supply plate with closed exhausts and external pilot supply | intermediate supply plate with open exhausts and internal pilot supply |

PS15370



intermediate supply plate with open exhausts and external pilot supply

* = For intermediate plate with closed pilot supply ports add suffix 1 to part number.
The intermediate plate takes one valve place. This needs to be considered for a proper purchase of modular tie rods.

Electropilots are supplied through end plates for internal as well as external supply. In case two different working pressures are applied to the end plates, it is possible to supply either all pilots with one of the two pressures (in general the higher one) or the pilots of each valve group with the working pressure of the same. This is made possible by means of a proper pressure separator. This same principle applies also in presence of more than two different pressures: in this case it is necessary to use intermediate supply plates suitably coupled with pressure separators.

| PSK100145 | PSK200145 | PSK200290 | PSK200725 | PSK300145 | PSK401 |
|-----------------------------|--|--|--|-----------------|---|
| | | | | | |
| tie-rod with hexagonal ends | modular tie-rod L1 = 14,5 mm for each place | modular tie-rod L2 = 29 mm for 2 places | modular tie-rod L5 = 72,5 mm for 5 places | counter tie-rod | Fixing plate for DIN rail connection; with screws |

| GZR-100 | GZR-101 | GZR-102 | GZR-V10004/6/8 | GZR-V20004/6/8 | GZR-V20L004/6/8 |
|---------------|---|---|---|---|---|
| | | | | | |
| blanking plug | G1/8 Fitting seat reduction - gas thread for silencer mounting | G1/4 Fitting seat reduction - gas thread for silencer mounting | straight fitting GZR-V10004 tube: 4 mm GZR-V10006 tube: 6 mm GZR-V10008 tube: 8 mm | swivel low elbow fitting GZR-V20004 tube: 4 mm GZR-V20006 tube: 6 mm GZR-V20008 tube: 8 mm | swivel high elbow fitting GZR-V20L004 tube: 4 mm GZR-V20L006 tube: 6 mm GZR-V20L008 tube: 8 mm |

| TIM06M/10M/20M | TIM06B/10B | D-530C-100/200 |
|--|--|--|
| | | |
| male connector 25 poles, prewired for monostable valves (M) TIM06M (Max 6M) TIM10M (Max 10M) TIM20M (Max 20M) | male connector 25 poles, prewired for bistable valves (B) TIM06B (Max 6B) TIM10B (Max 10B) | miniature bipolar flying connector: stripped and tinned for protection D-530C-100 (wire length 1000 mm) D-530C-200 (wire length 2000 mm) |

Electrical connections

| TSCF000 | TSCF24S0300 TSCF24S0500 TSCF24S1000 |
|---|--|
| | |
| sub-D female connector 25 poles without cable | sub-D flying female connector in compliance with CEI 20-22 O.R. II prewired for 24 coils (3-5-10 m length) M3x12 fixing screws |