

# LAGP150

Pneumatic power pivot



L	A	G	P	1	5	0	V	E	0	9	0	B	C	
1	2	3			4	5	6			7	8	9		

<b>1 Series</b>	<b>2 Version</b>	<b>3 Size</b>
-----------------	------------------	---------------

**LAG** = Power pivot with predetermine pivot rotation angles

**P** = Pneumatic-standard

**150** = Ø100 mm cylinder

<b>4 Table position</b>	<b>5 Sensor</b>	<b>6 Pivot rotation angles</b>
-------------------------	-----------------	--------------------------------

**V** = Vertical 180°  
**O** = Horizontal 90°  
**Z** = Vertical, mirror of V position  
 Max opening angle 120°  
**P** = Horizontal, mirror of O position  
 Max opening angle 60°

**E** = Electronic sensor with M12 swivel connector  
**A** = Electronic sensor with M12 swivel connector + electronic sensor for brake condition detection

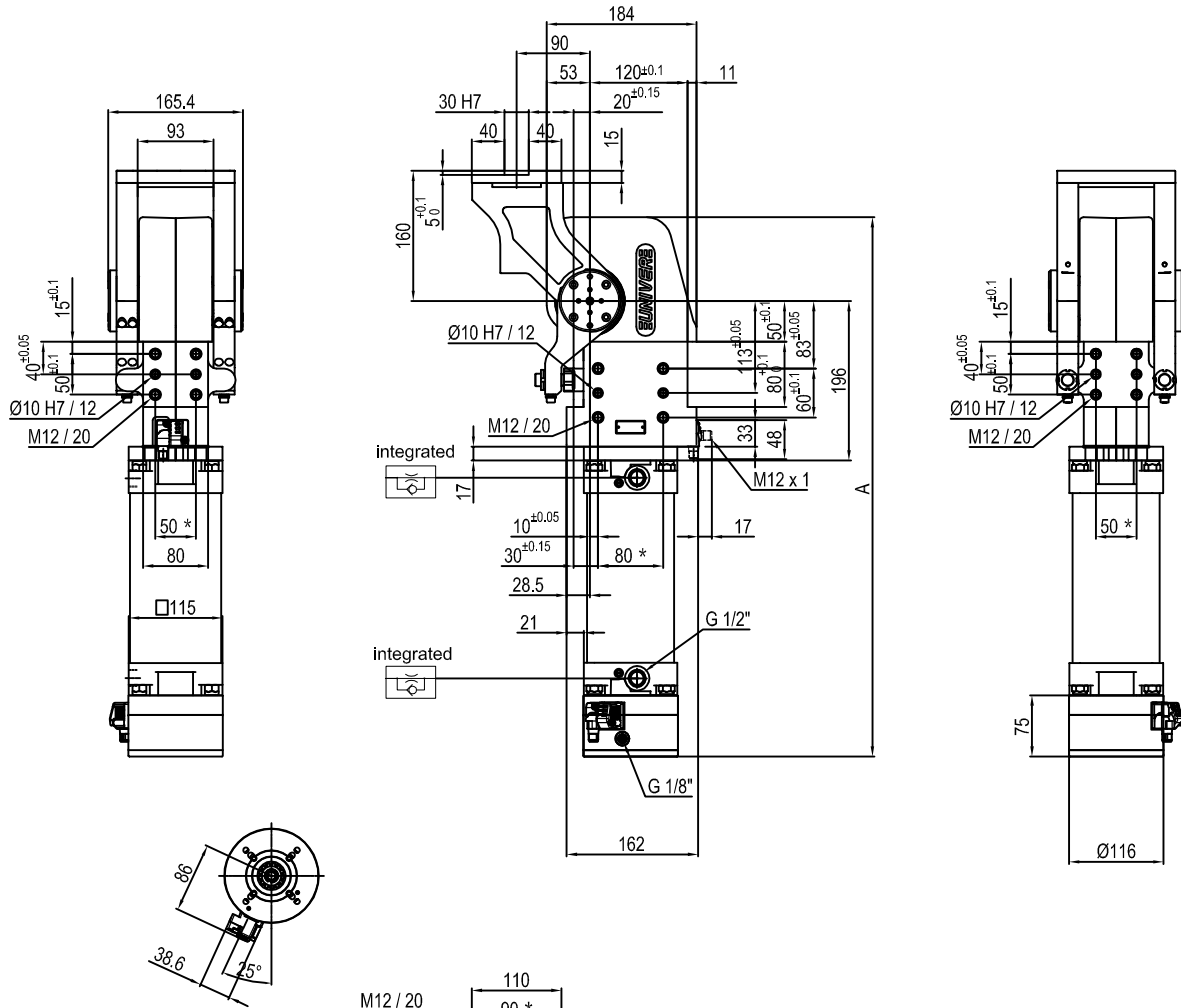
**120** = 120°  
**090** = 90°  
**060** = 60°  
**045** = 45°

<b>7 Brake system</b>	<b>8 Valve</b>	<b>9 Connections</b>
-----------------------	----------------	----------------------

**B** = With brake  
**W** = Without brake

**C** = Integrated valve for cycle time optimization

**\_** = If not specified, on the left side (sensor left side)  
**D** = Right side (sensor right side)  
**F** = Front side (in front of the sensor)  
**P** = Rear side (same side as sensor)

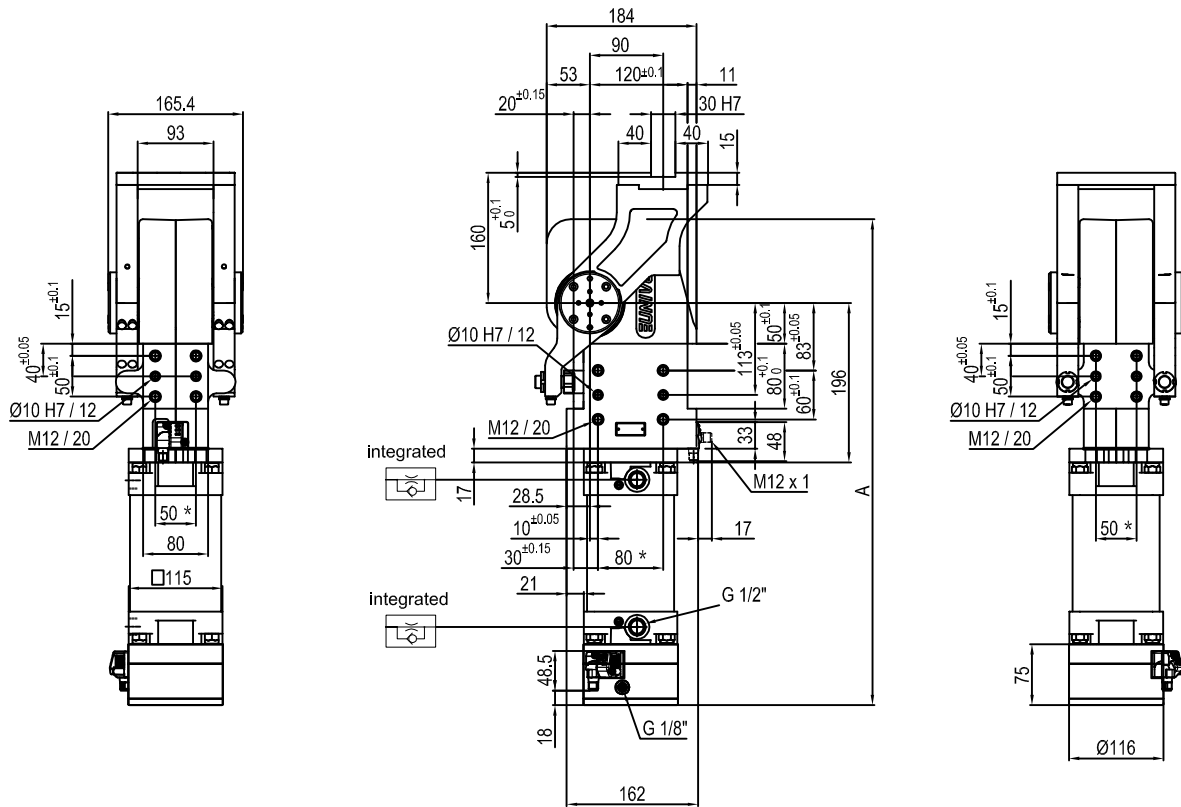


Pivot rotation in degrees	A
45°	583.5
60°	597
90°	628
120°	662.5

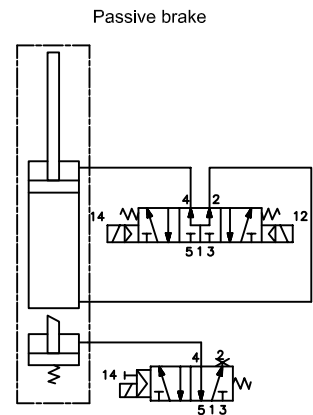
Size	Holding moment	Max. torque at the rotary table 0,55 MPa	Weight
150	6000 Nm	120 Nm	25 Kg

\* : TOLERANCE BETWEEN DOWEL HOLES ± 0.02, TO SCREW HOLES ± 0.1

Min./Max. operating pressure: **0,4 / 0,6 MPa**  
 Operating temperature: **5° + 45° C**  
 Predetermine pivot rotation in degrees: **45° - 60° - 90° - 120°**  
 Electronic sensor with M12 swivel connector that can be orientated at 0° or 90°  
 Supply voltage: 10+30 V DC  
 IP code: **IP 65**



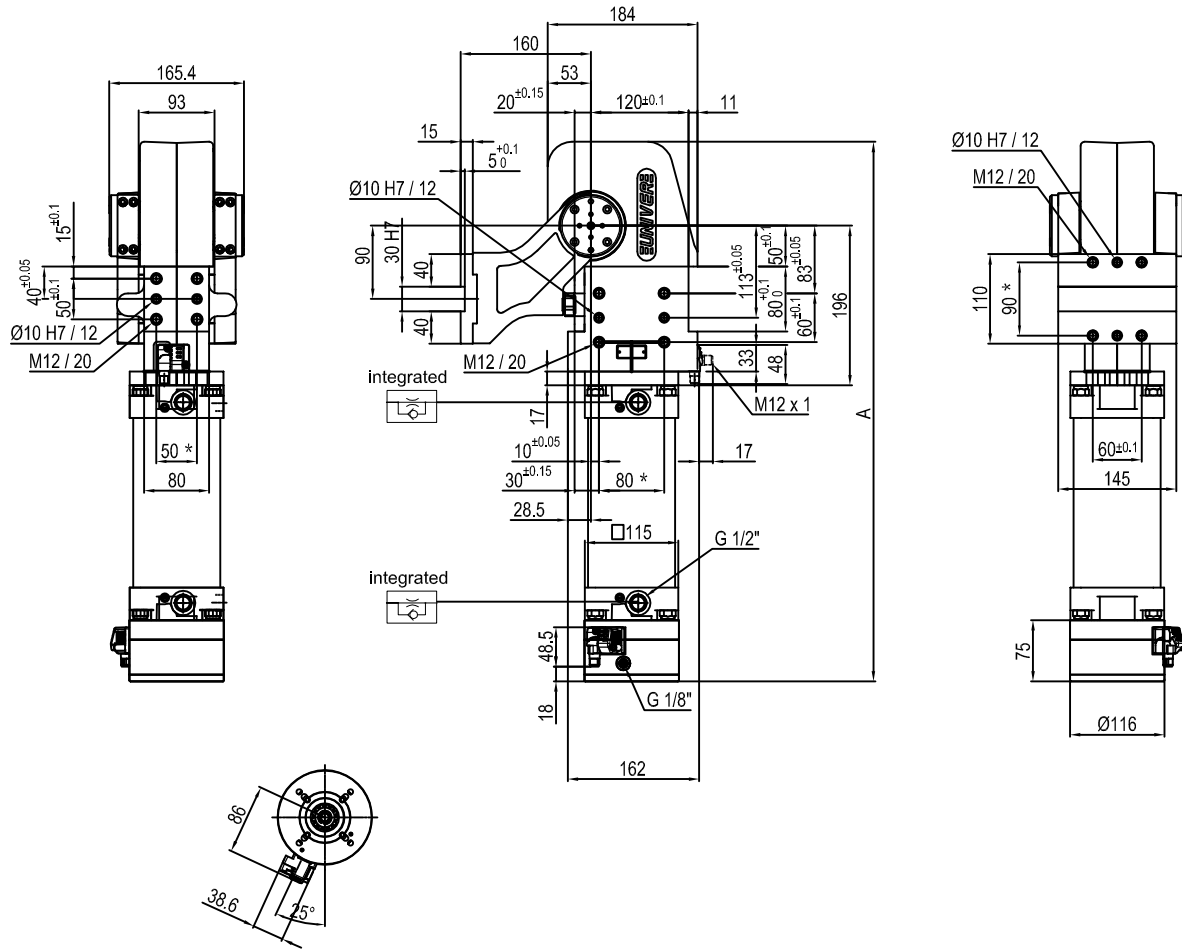
Pivot rotation in degrees	A
45°	583.5
60°	597



Size	Holding moment	Max. torque at the rotary table 0,55 MPa	Weight
150	6000 Nm	120 Nm	25 Kg

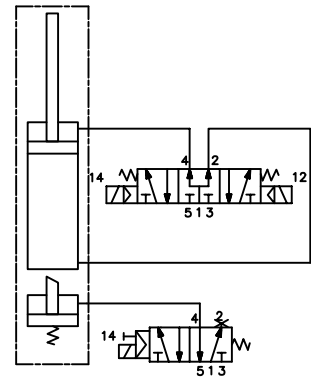
Min./Max. operating pressure: **0,4 / 0,6 MPa**  
 Operating temperature: **5° ± 45° C**  
 Predetermine pivot rotation in degrees: **45° - 60°**  
 Electronic sensor with M12 swivel connector that can be orientated at 0° or 90°  
 Supply voltage: 10-30 V DC  
 IP code: **IP 65**

\* : TOLERANCE BETWEEN DOWEL HOLES ± 0.02, TO SCREW HOLES ± 0.1



Pivot rotation in degrees	A
45°	583.5
60°	597
90°	628
120°	662.5

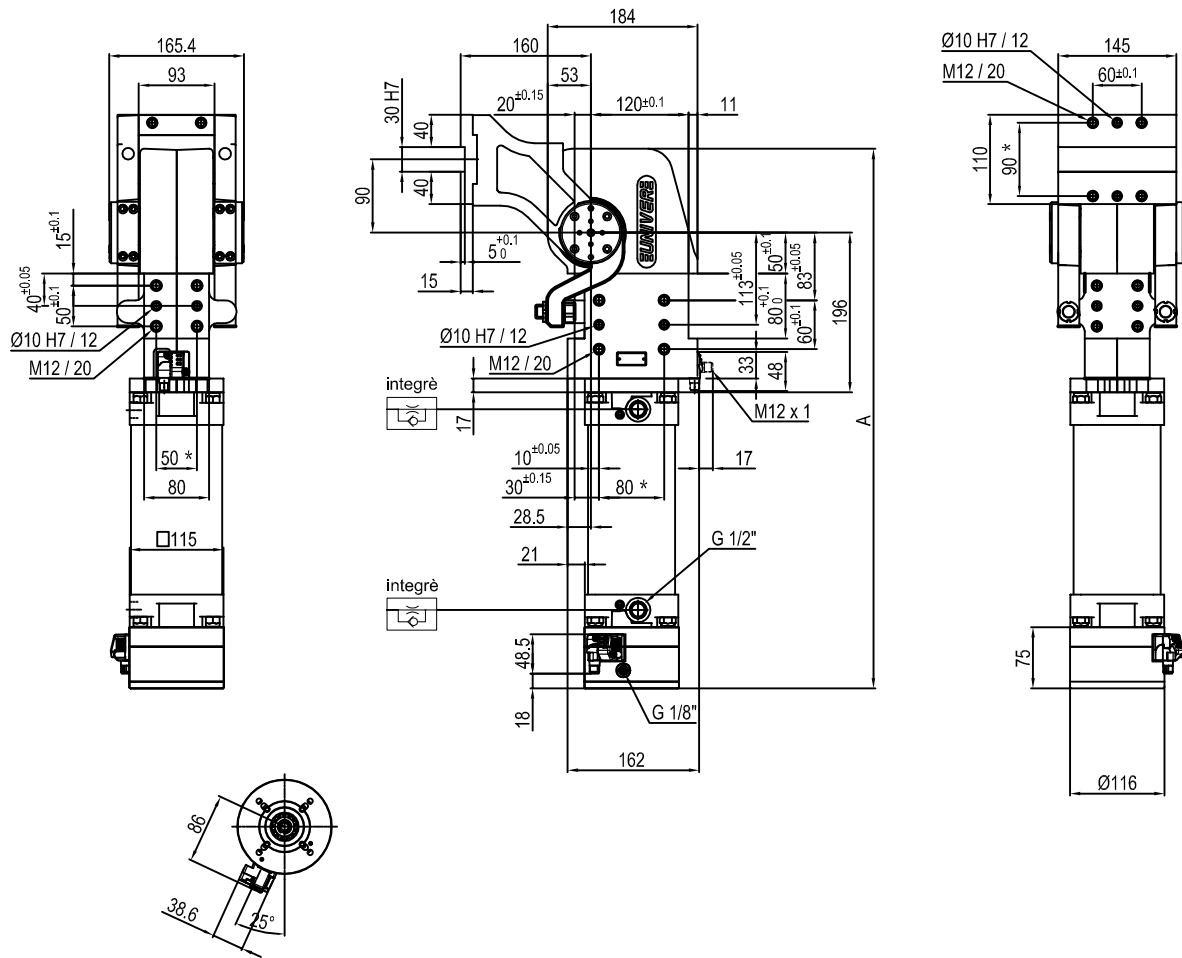
Passive brake



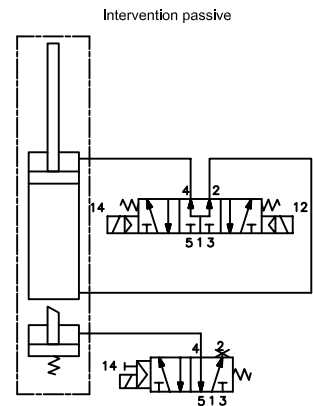
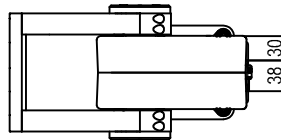
Size	Holding moment	Max. torque at the rotary table 0,55 MPa	Weight
150	6000 Nm	120 Nm	25 Kg

Min./Max. operating pressure: **0,4 / 0,6 MPa**  
 Operating temperature: **5° ± 45° C**  
 Predetermine pivot rotation in degrees: **45° - 60° - 90° - 120°**  
 Electronic sensor with M12 swivel connector that can be orientated at 0° or 90°  
 Supply voltage: 10-30 V DC  
 IP code: **IP 65**

\* : TOLERANCE BETWEEN DOWEL HOLES ± 0.02, TO SCREW HOLES ± 0.1



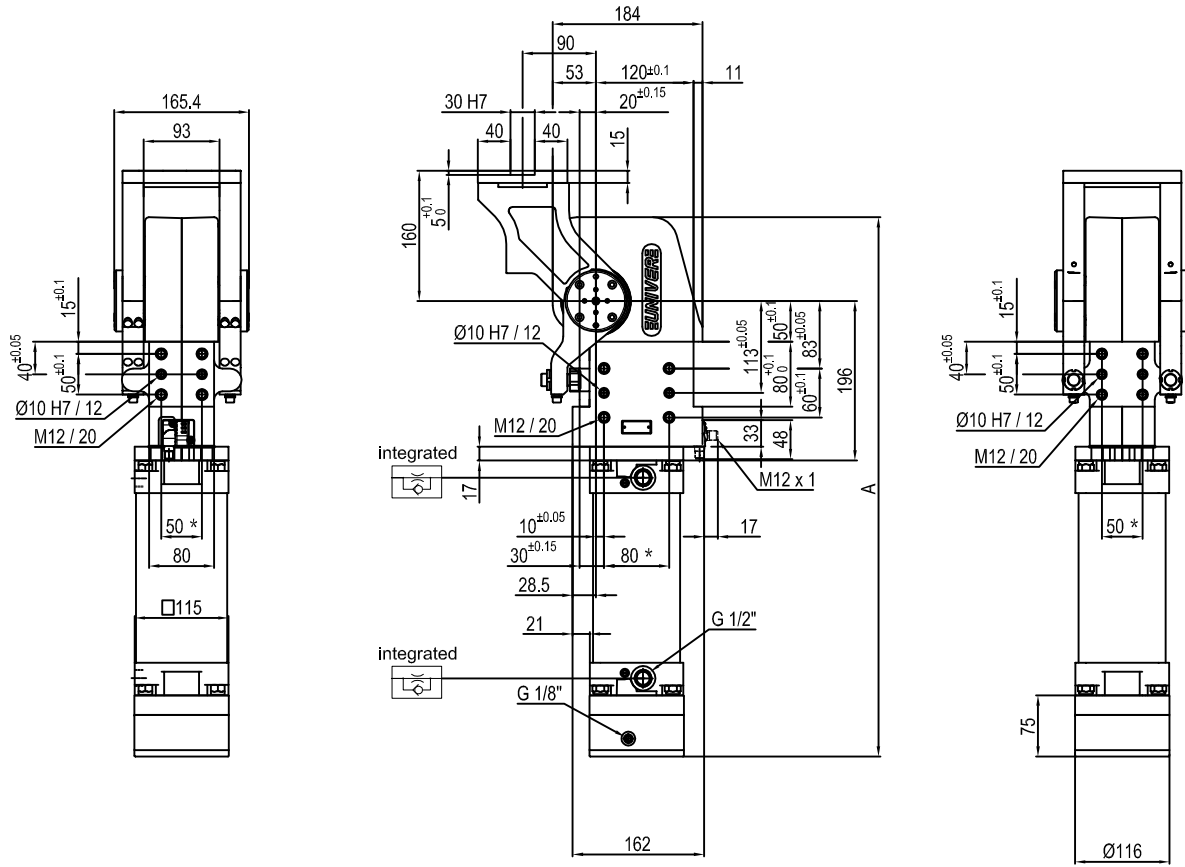
Angles de rotation	A
45°	583.5
60°	597
90°	628
120°	662.5



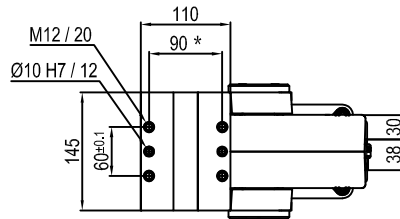
Taille	Couple de retenue	Moment de torsion Max. à la table à 0,55 MPa	Poids
150	6000 Nm	120 Nm	25 Kg

\* : TOLÉRANCE TROUS DE CENTRAGE  $\pm 0.02$ , TROUS FILETÉS  $\pm 0.1$

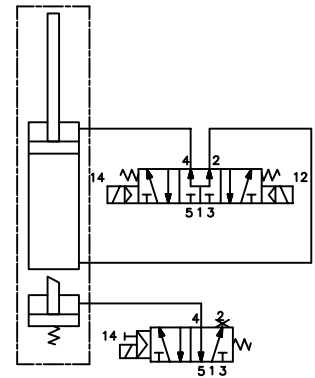
Pression min./max. de fonctionnement: **0,4 / 0,6 MPa**  
 Température de fonctionnement: **5° ± 45° C**  
 Angle de rotation étrier pré-établi: **45° - 60° - 90° - 120°**  
 Détecteur électronique avec connecteur M12, orientable à 0° ou 90°  
 Tension de fonctionnement: 10 + 30 V DC  
 Protection: **IP 65**



Pivot rotation in degrees	A
45°	583.5
60°	597
90°	628
120°	662.5



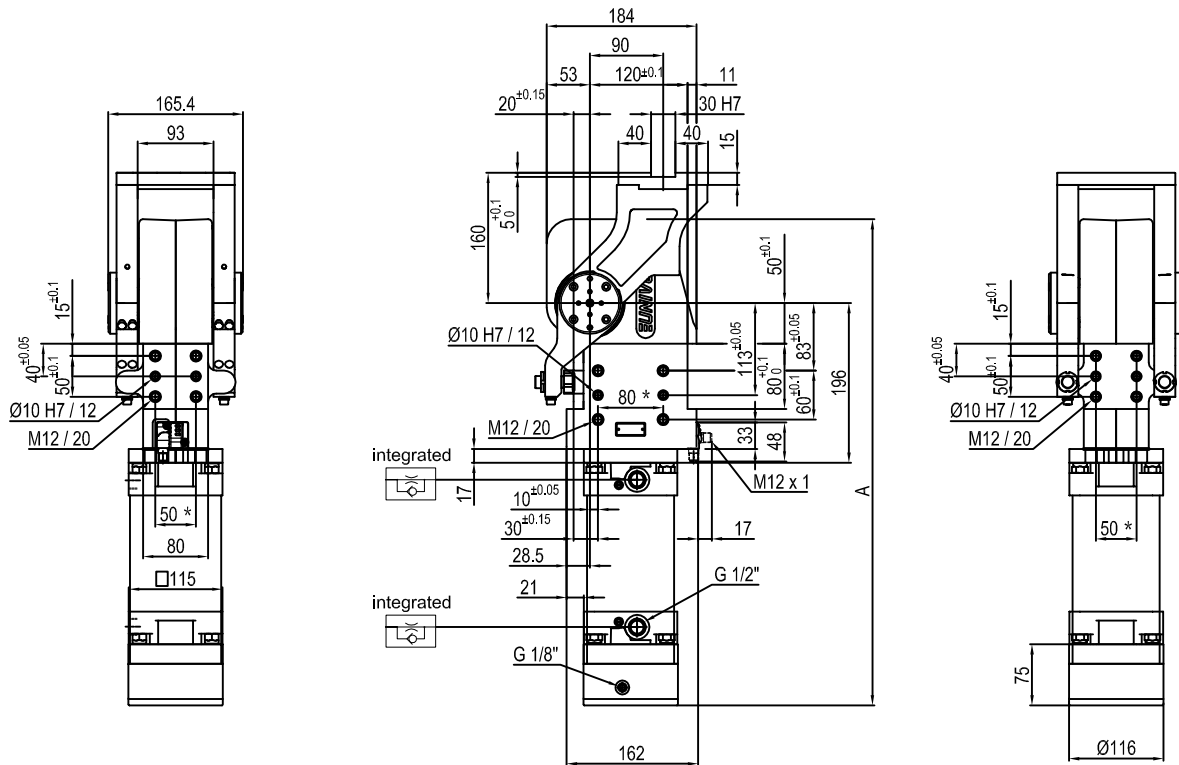
Passive brake



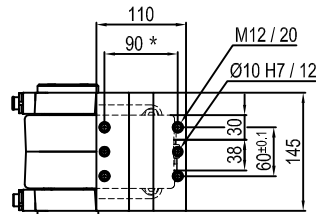
Size	Holding moment	Max. torque at the rotary table 0,55 MPa	Weight
150	6000 Nm	120 Nm	25 Kg

Min./Max. operating pressure: 0,4 / 0,6 MPa  
 Operating temperature: 5° + 45° C  
 Predetermine pivot rotation in degrees: 45° - 60° - 90° - 120°  
 Electronic sensor with M12 swivel connector that can be orientated at 0° or 90°  
 Supply voltage: 10-30 V DC  
 IP code: IP 65

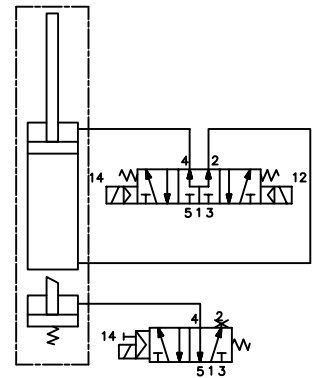
\* : TOLERANCE BETWEEN DOWEL HOLES  $\pm 0.02$ , TO SCREW HOLES  $\pm 0.1$



Pivot rotation in degrees	A
45°	583.5
60°	597



Passive brake



Size	Holding moment	Max. torque at the rotary table 0,55 MPa	Weight
150	6000 Nm	120 Nm	25 Kg

Min./Max. operating pressure: 0,4 / 0,6 MPa

Operating temperature: 5° ± 45° C

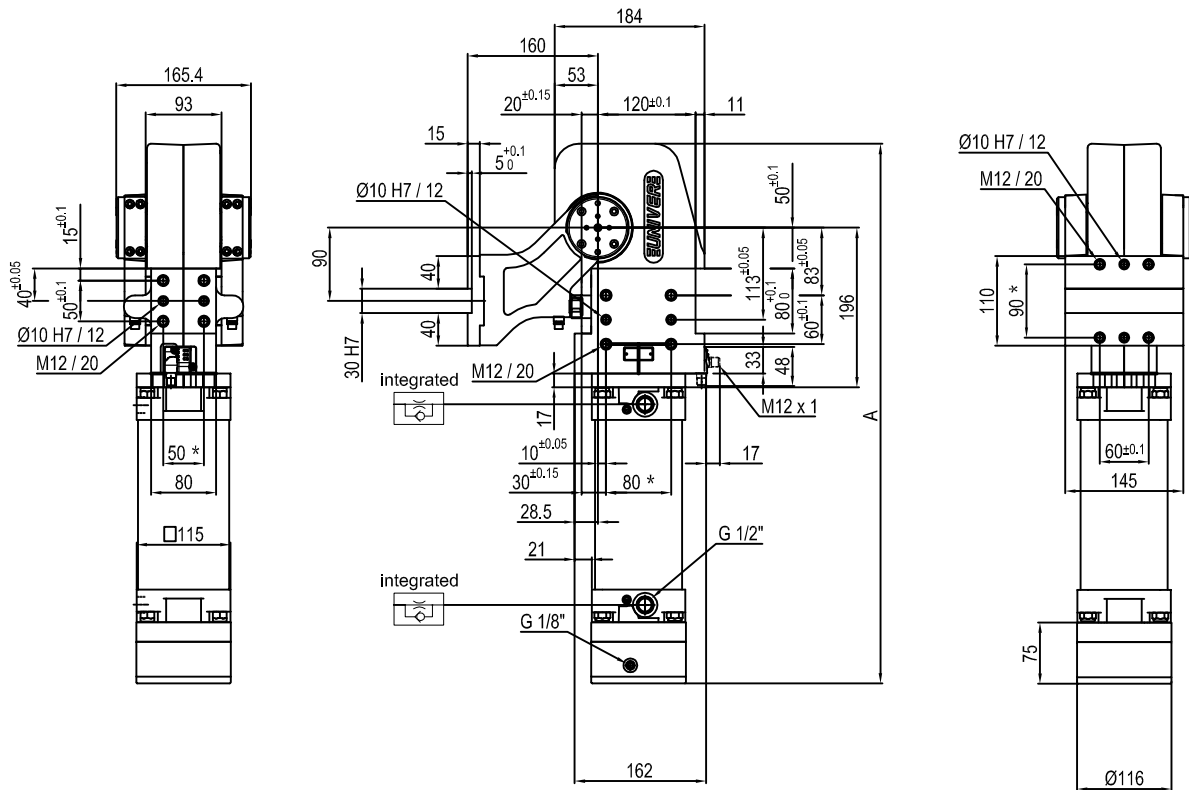
Predetermine pivot rotation in degrees: 45° - 60°

Electronic sensor with M12 swivel connector that can be orientated at 0° or 90°

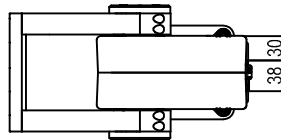
Supply voltage: 10±30 V DC

IP code: IP 65

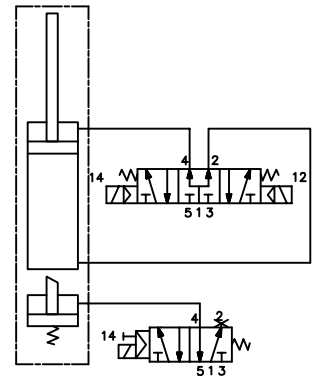
\* : TOLERANCE BETWEEN DOWEL HOLES ± 0.02, TO SCREW HOLES ± 0.1



Pivot rotation in degrees	A
45°	583.5
60°	597
90°	628
120°	662.5



Passive brake

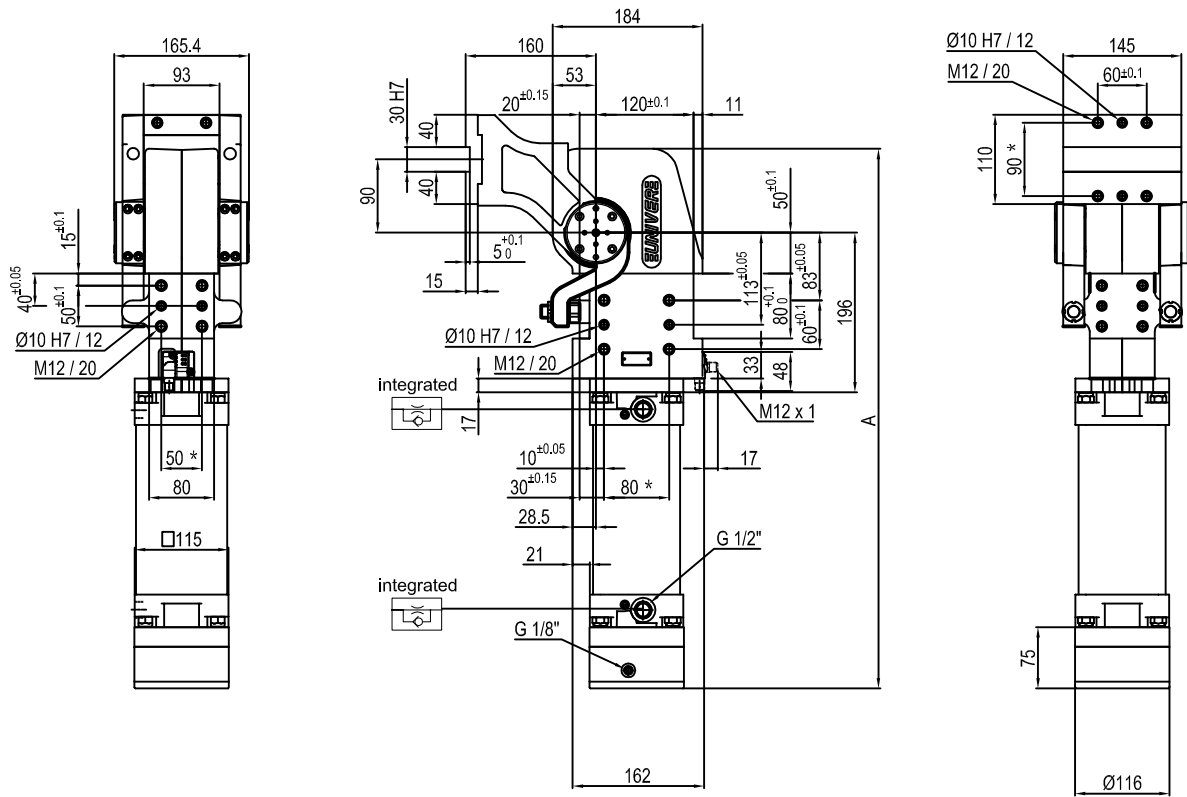


Size	Holding moment	Max. torque at the rotary table 0,55 MPa	Weight
150	6000 Nm	120 Nm	25 Kg

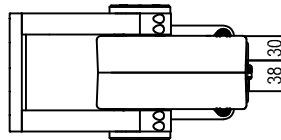
Min./Max. operating pressure: **0,4 / 0,6 MPa**  
 Operating temperature: **5° + 45° C**  
 Predetermine pivot rotation in degrees: **45° - 60° - 90° - 120°**  
 Electronic sensor with M12 swivel connector that can be orientated at 0° or 90°  
 Supply voltage: 10÷30 V DC  
 IP code: **IP 65**

\* : TOLERANCE BETWEEN DOWEL HOLES ± 0.02, TO SCREW HOLES ± 0.1

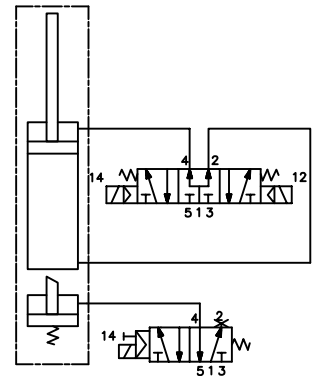




Pivot rotation in degrees	A
45°	583.5
60°	597
90°	628
120°	662.5



Passive brake



Size	Holding moment	Max. torque at the rotary table 0,55 MPa	Weight
150	6000 Nm	120 Nm	25 Kg

Min./Max. operating pressure: 0,4 / 0,6 MPa

Operating temperature: 5° + 45° C

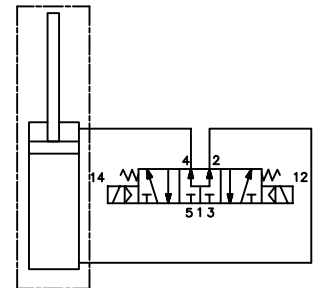
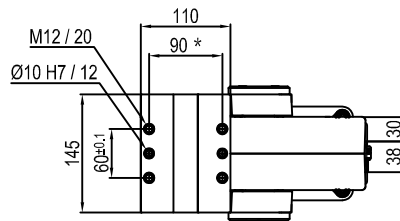
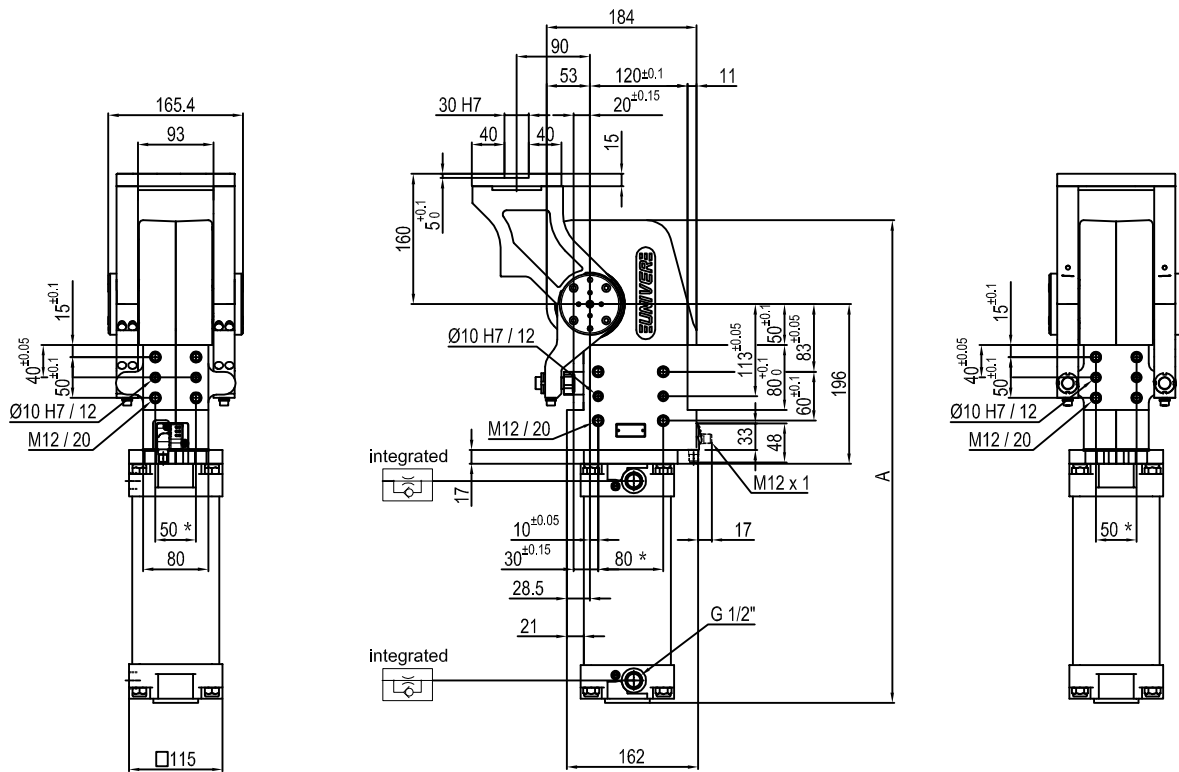
Predetermine pivot rotation in degrees: 45° - 60° - 90° - 120°

Electronic sensor with M12 swivel connector that can be orientated at 0° or 90°

Supply voltage: 10÷30 V DC

IP code: IP 65

\* : TOLERANCE BETWEEN DOWEL HOLES ± 0.02, TO SCREW HOLES ± 0.1



Pivot rotation in degrees	A
45°	513.5
60°	527
90°	558
120°	592.5

Size	Holding moment	Max. torque at the rotary table 0,55 MPa	Weight
150	6000 Nm	120 Nm	23 Kg

Min./Max. operating pressure: **0,4 / 0,6 MPa**

Operating temperature: **5° + 45° C**

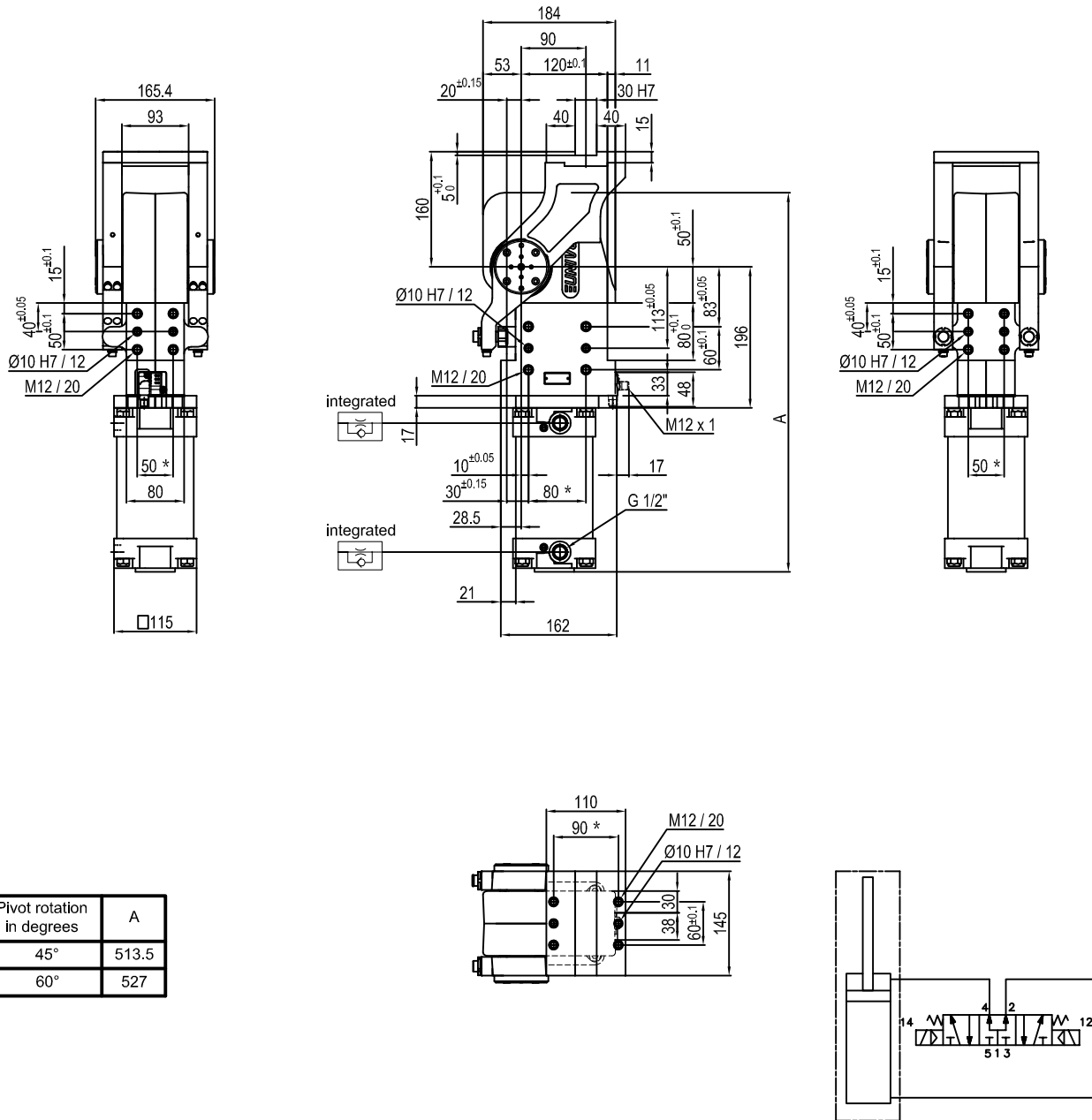
Predetermine pivot rotation in degrees: **45° - 60° - 90° - 120°**

Electronic sensor with M12 swivel connector that can be orientated at 0° or 90°

Supply voltage: 10÷30 V DC

IP code: **IP 65**

\* : TOLERANCE BETWEEN DOWEL HOLES ± 0.02, TO SCREW HOLES ± 0.1



Pivot rotation in degrees	A
45°	513.5
60°	527

Size	Holding moment	Max. torque at the rotary table 0,55 MPa	Weight
150	6000 Nm	120 Nm	23 Kg

Min./Max. operating pressure: **0,4 / 0,6 MPa**

Operating temperature: **5° + 45° C**

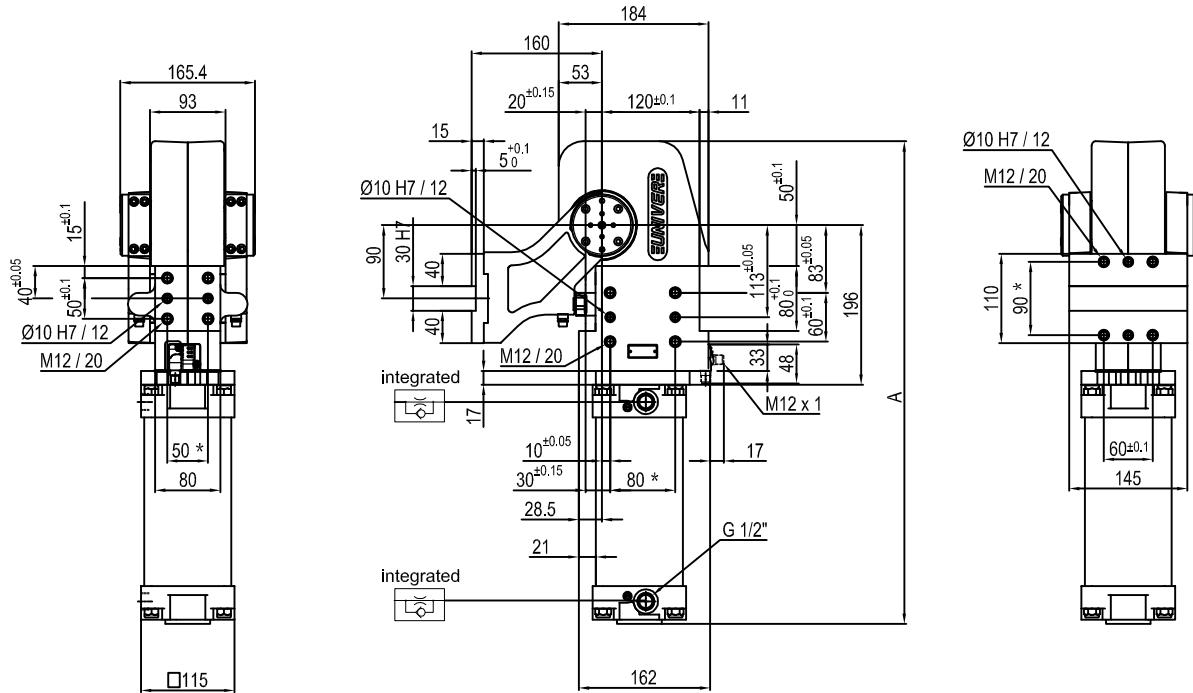
Predetermine pivot rotation in degrees: **45° - 60°**

Electronic sensor with M12 swivel connector that can be orientated at 0° or 90°

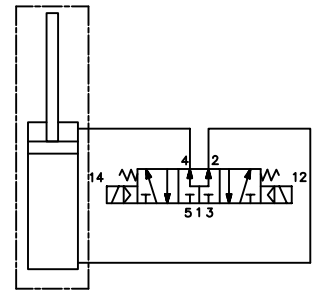
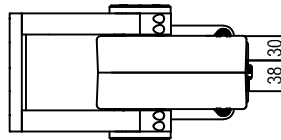
Supply voltage: 10÷30 V DC

IP code: **IP 65**

\* : TOLERANCE BETWEEN DOWEL HOLES ± 0.02, TO SCREW HOLES ± 0.1



Pivot rotation in degrees	A
45°	513.5
60°	527
90°	558
120°	592.5

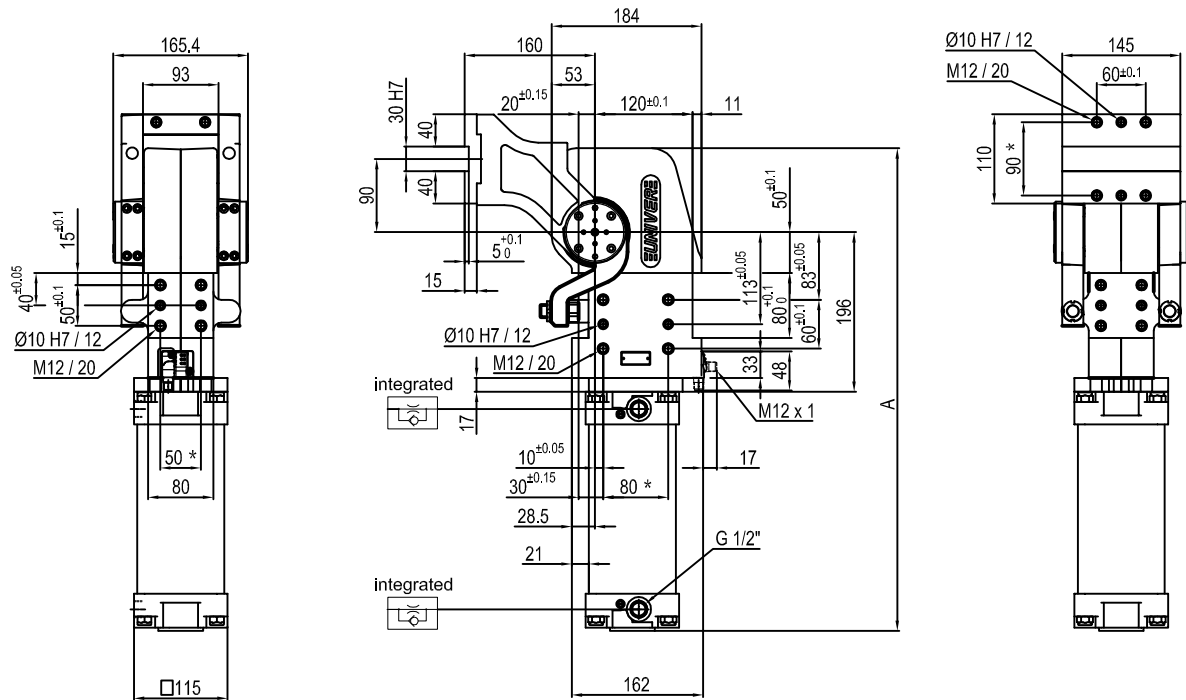


Size	Holding moment	Max. torque at the rotary table 0,55 MPa	Weight
150	6000 Nm	120 Nm	23 Kg

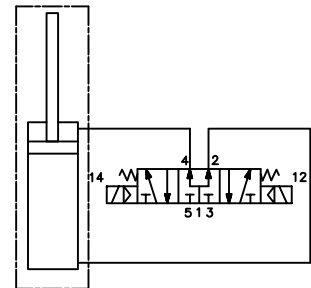
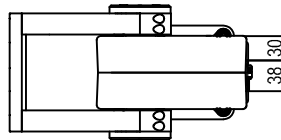
Min./Max. operating pressure: **0,4 / 0,6 MPa**  
 Operating temperature: **5° ± 45° C**  
 Predeterminate pivot rotation in degrees: **45° - 60° - 90° - 120°**  
 Electronic sensor with M12 swivel connector that can be orientated at 0° or 90°  
 Supply voltage: 10÷30 V dc  
 IP code: **IP 65**

\* : TOLERANCE BETWEEN DOWEL HOLES ± 0.02, TO SCREW HOLES ± 0.1

Subject to technical modifications without notice.



Pivot rotation in degrees	A
45°	513.5
60°	527
90°	558
120°	592.5



Size	Holding moment	Max. torque at the rotary table 0,55 MPa	Weight
150	6000 Nm	120 Nm	23 Kg

Min./Max. operating pressure: **0,4 / 0,6 MPa**

Operating temperature: **5° + 45° C**

Predetermine pivot rotation in degrees: **45° - 60° - 90° - 120°**

Electronic sensor with M12 swivel connector that can be orientated at 0° or 90°

Supply voltage: 10÷30 V DC

IP code: **IP 65**

\* : TOLERANCE BETWEEN DOWEL HOLES ± 0.02, TO SCREW HOLES ± 0.1