

LAGP075

Unità rotante pneumatica



L	A	G	P	0	7	5	V	E	0	9	0	B	C	
1	2	3	4	5	6	7	8	9						

1 Serie	2 Versione	3 Taglia
---------	------------	----------

LAG = Unità rotante con angoli di rotazione determinanti

P = Pneumatica standard

075 = Cilindro Ø 80 mm

4 Posizione tavola	5 Sensore di posizione	6 Angoli di rotazione
--------------------	------------------------	-----------------------

V = Verticale 180°

O = Orizzontale 90°

Z = Verticale, speculare alla posizione V
massima apertura angolare 120°

P = Orizzontale, speculare alla posizione O
massima apertura angolare 60°

E = Sensore elettronico

con connettore M12 orientabile

A = Sensore elettronico

con connettore M12 orientabile +
sensore elettronico per rilevamento
condizione freno

120 = 120°

090 = 90°

060 = 60°

045 = 45°

7 Blocco di stazionamento	8 Valvola	9 Connessioni
---------------------------	-----------	---------------

B = Con blocco di stazionamento

W = Senza blocco di stazionamento

C = Valvola integrata per

ottimizzazione tempo ciclo

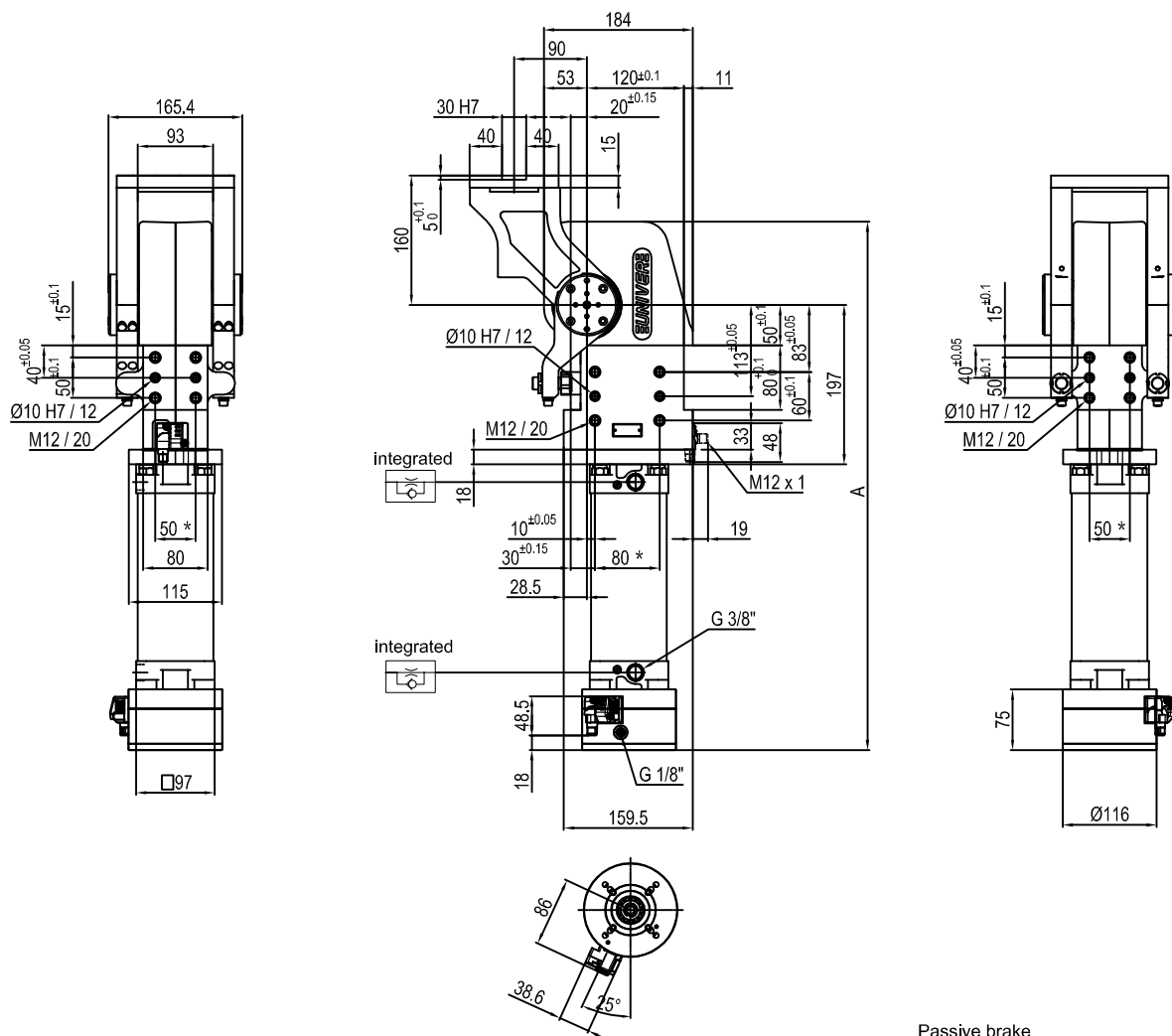
_ = Se non specificato lato sinistro
(parte sinistra del sensore)

D = Lato destro (parte destra del sensore)

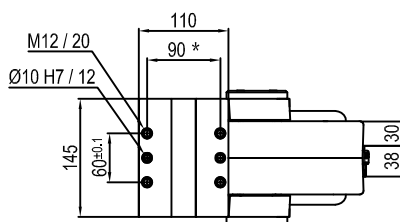
F = Frontale (di fronte al sensore)

P = Posteriore (stesso lato del sensore)

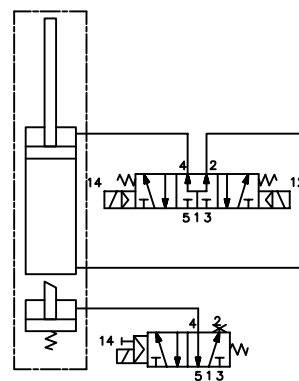
Pneumatic power pivot



Pivot rotation in degrees	A
45°	574
60°	588
90°	619
120°	653.5



Passive brake

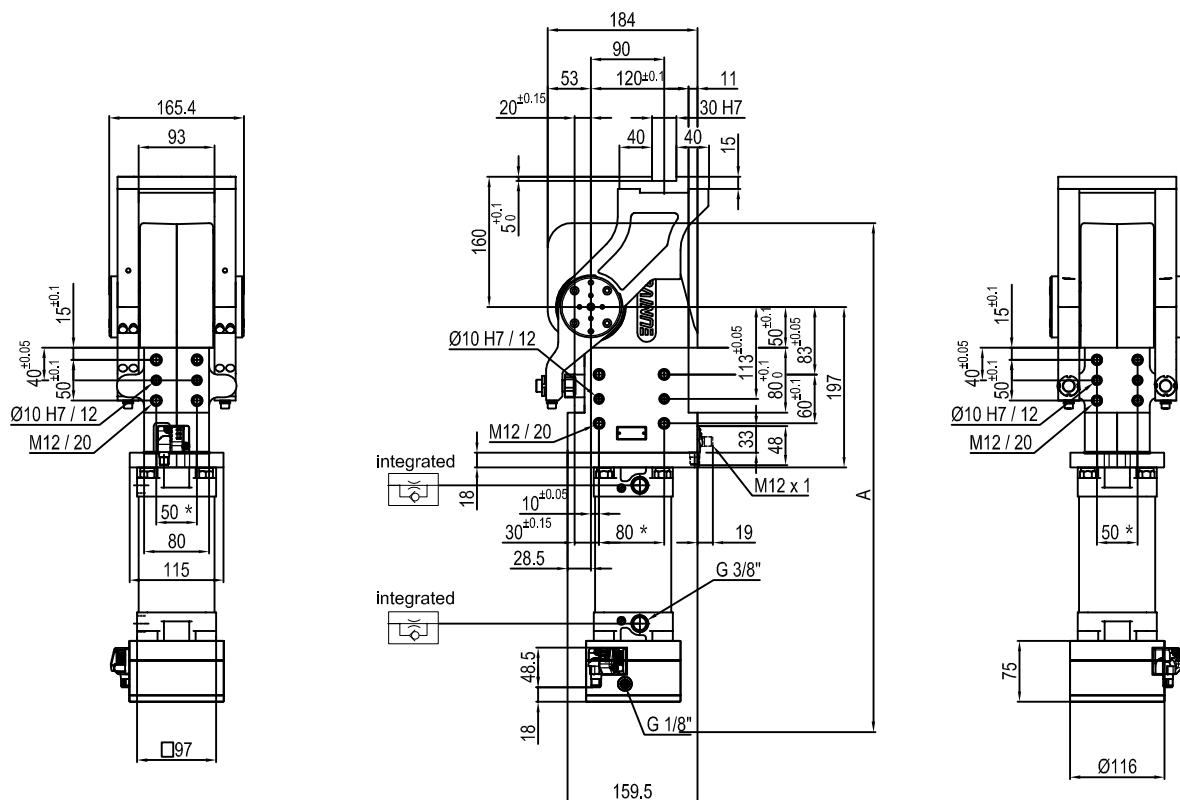


Size	Holding moment	Max. torque at the rotary table 0,55 MPa	Weight
075	6000 Nm	75 Nm	24 Kg

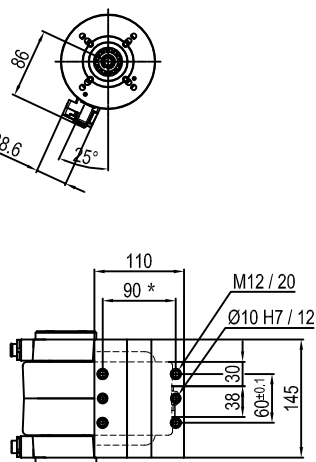
Min./Max. operating pressure: **0,4 / 0,6 MPa**
 Operating temperature: **5° + 45° C**
 Predetermine pivot rotation in degrees: **45° - 60° - 90° - 120°**
 Electronic sensor with M12 swivel connector that can be orientated at 0° or 90°
 Supply voltage: 10-30 V DC
 IP code: **IP 65**

* : TOLERANCE BETWEEN DOWEL HOLES ± 0.02, TO SCREW HOLES ± 0.1

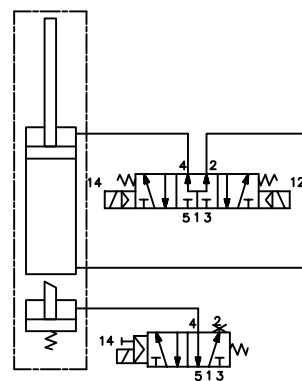
Subject to technical modifications without notice.



Pivot rotation in degrees	A
45°	574
60°	588



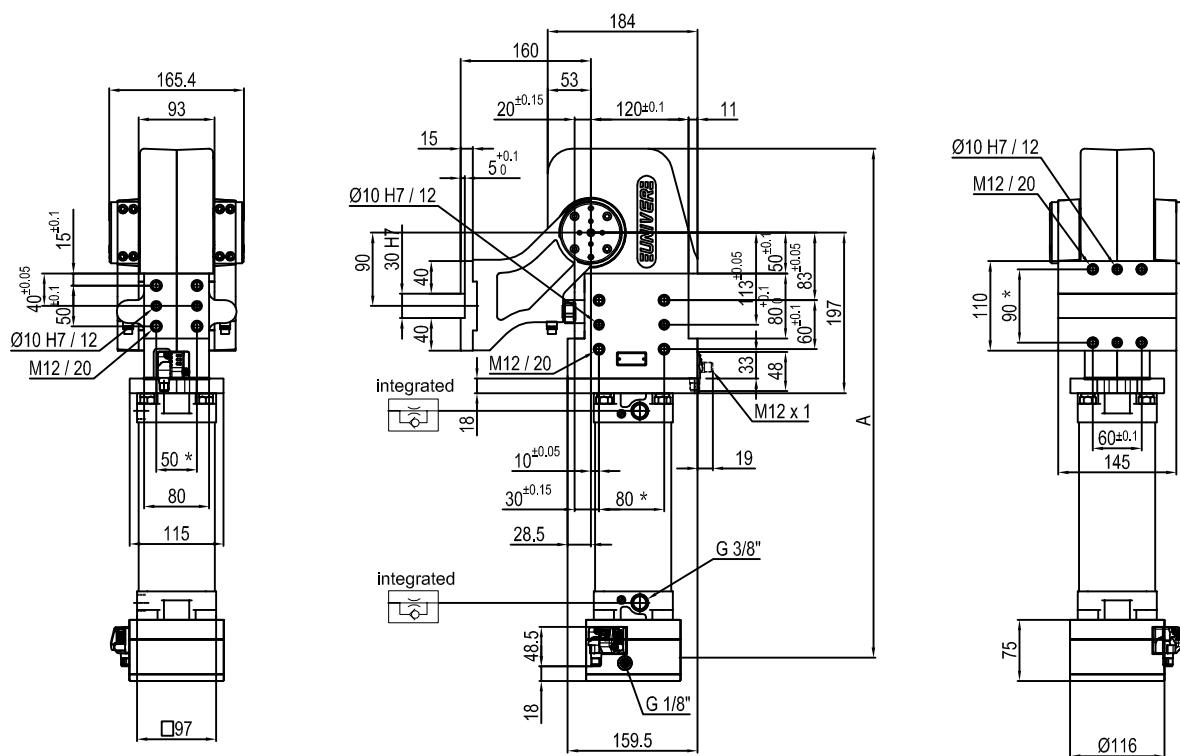
Passive brake



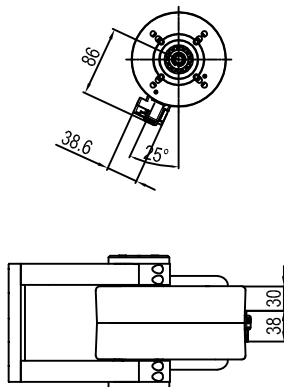
Size	Holding moment	Max. torque at the rotary table 0,55 MPa	Weight
075	6000 Nm	75 Nm	24 Kg

Min./Max. operating pressure: **0,4 / 0,6 MPa**
 Operating temperature: **5° + 45° C**
 Predetermine pivot rotation in degrees: **45° - 60°**
 Electronic sensor with M12 swivel connector that can be orientated at 0° or 90°
 Supply voltage: 10÷30 V DC
 IP code: **IP 65**

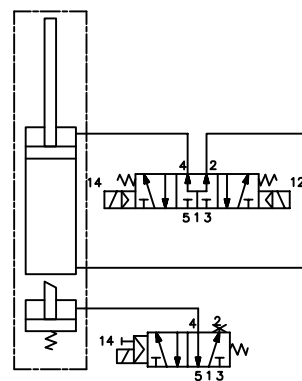
* : TOLERANCE BETWEEN DOWEL HOLES ± 0.02 , TO SCREW HOLES ± 0.1



Pivot rotation in degrees	A
45°	574
60°	588
90°	619
120°	653.5



Passive brake

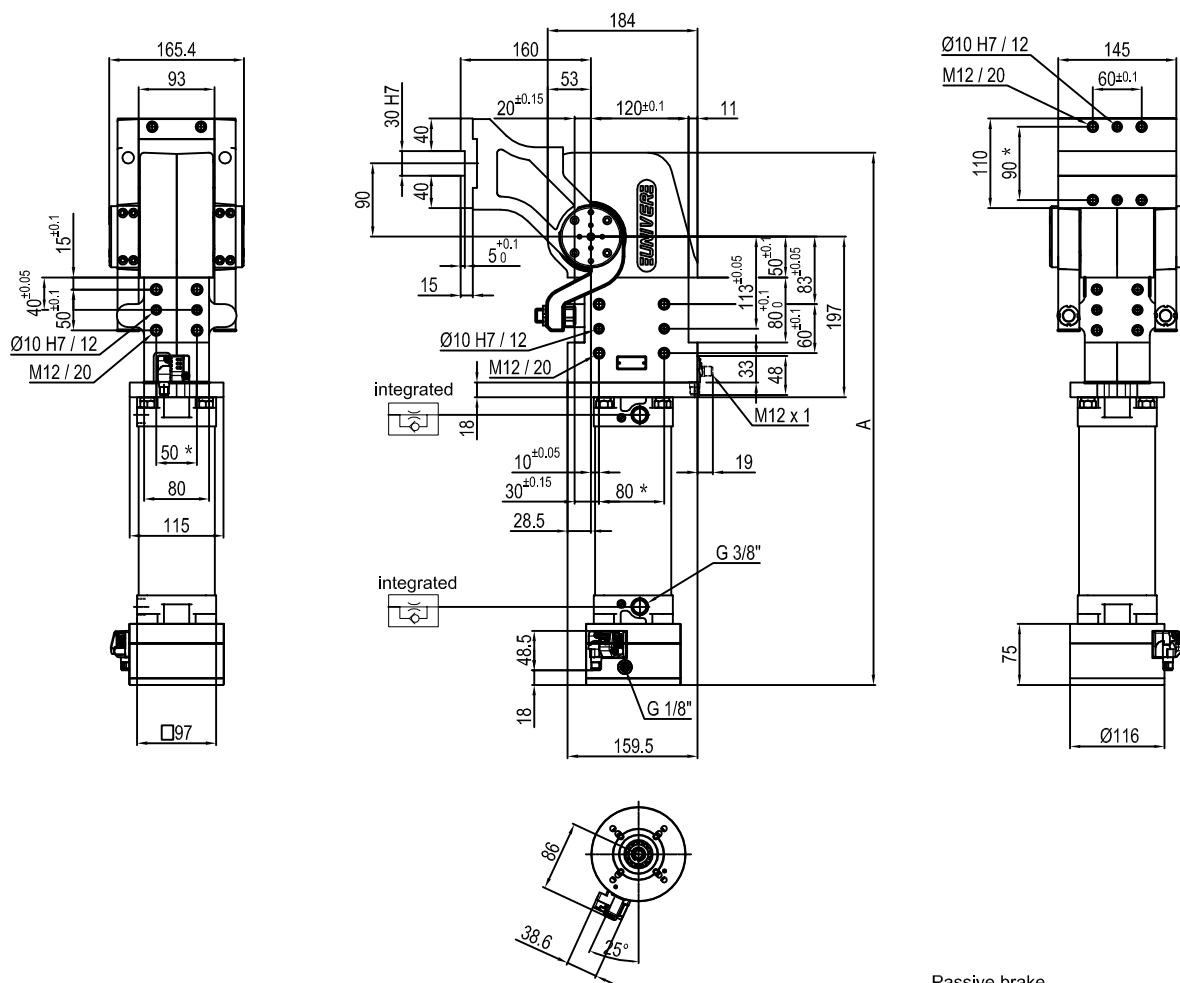


Size	Holding moment	Max. torque at the rotary table 0,55 MPa	Weight
075	6000 Nm	75 Nm	24 Kg

Min./Max. operating pressure: **0,4 / 0,6 MPa**
 Operating temperature: **5° + 45° C**
 Predetermine pivot rotation in degrees: **45° - 60° - 90° - 120°**
 Electronic sensor with M12 swivel connector that can be orientated at 0° or 90°
 Supply voltage: 10-30 V DC
 IP code: **IP 65**

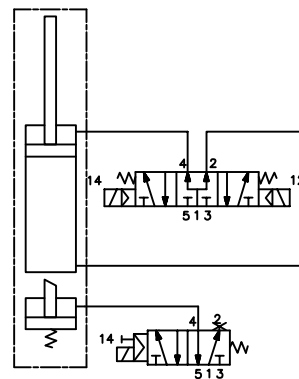
* : TOLERANCE BETWEEN DOWEL HOLES ± 0.02 , TO SCREW HOLES ± 0.1

Pneumatic power pivot



Pivot rotation in degrees	A
45°	574
60°	588
90°	619
120°	653.5

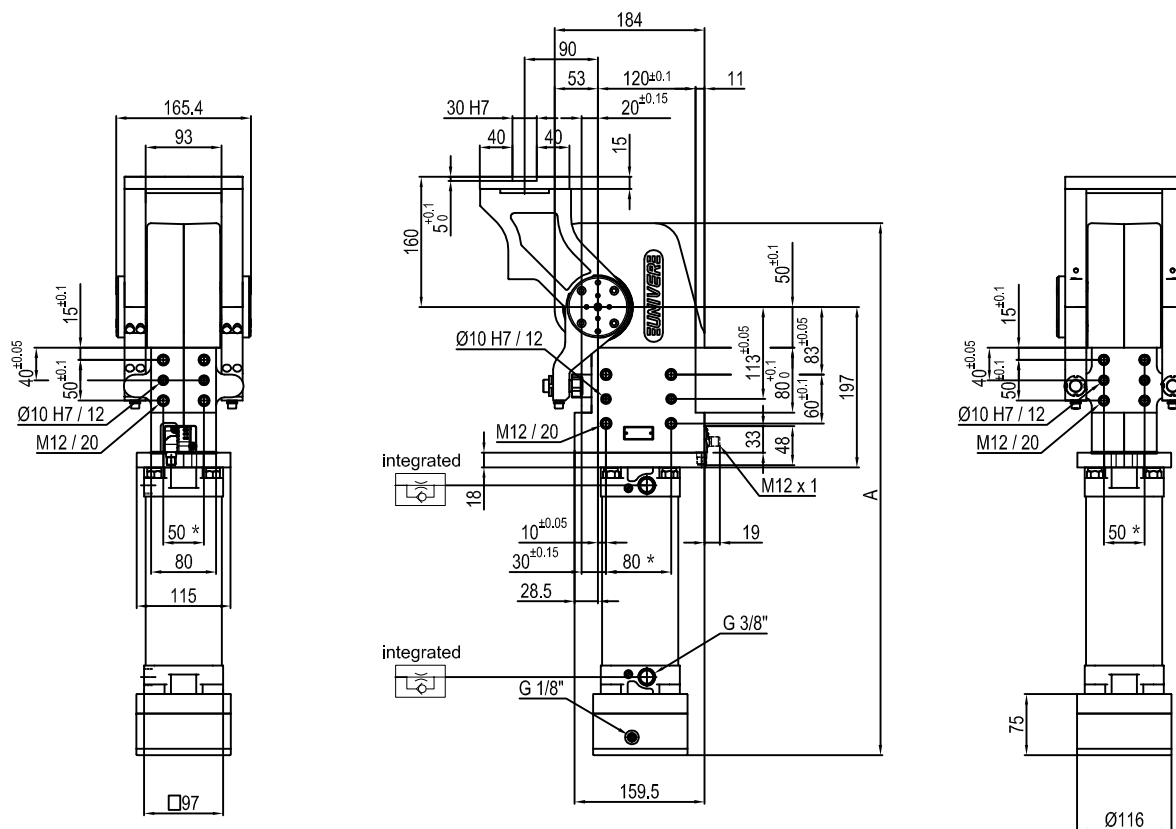
Passive brake



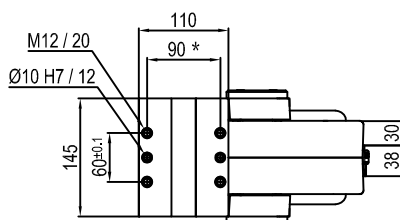
Size	Holding moment	Max. torque at the rotary table 0,55 MPa	Weight
075	6000 Nm	75 Nm	24 Kg

Min./Max. operating pressure: **0,4 / 0,6 MPa**
 Operating temperature: **5° + 45° C**
 Predetermine pivot rotation in degrees: **45° - 60° - 90° - 120°**
 Electronic sensor with M12 swivel connector that can be orientated at 0° or 90°
 Supply voltage: 10÷30 V DC
 IP code: **IP 65**

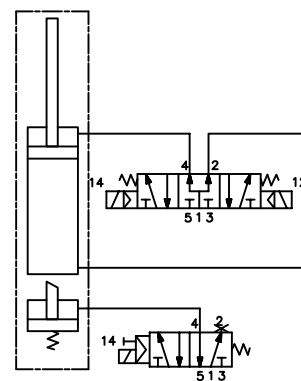
* : TOLERANCE BETWEEN DOWEL HOLES $\pm 0,02$, TO SCREW HOLES $\pm 0,1$



Pivot rotation in degrees	A
45°	574
60°	588
90°	619
120°	653.5



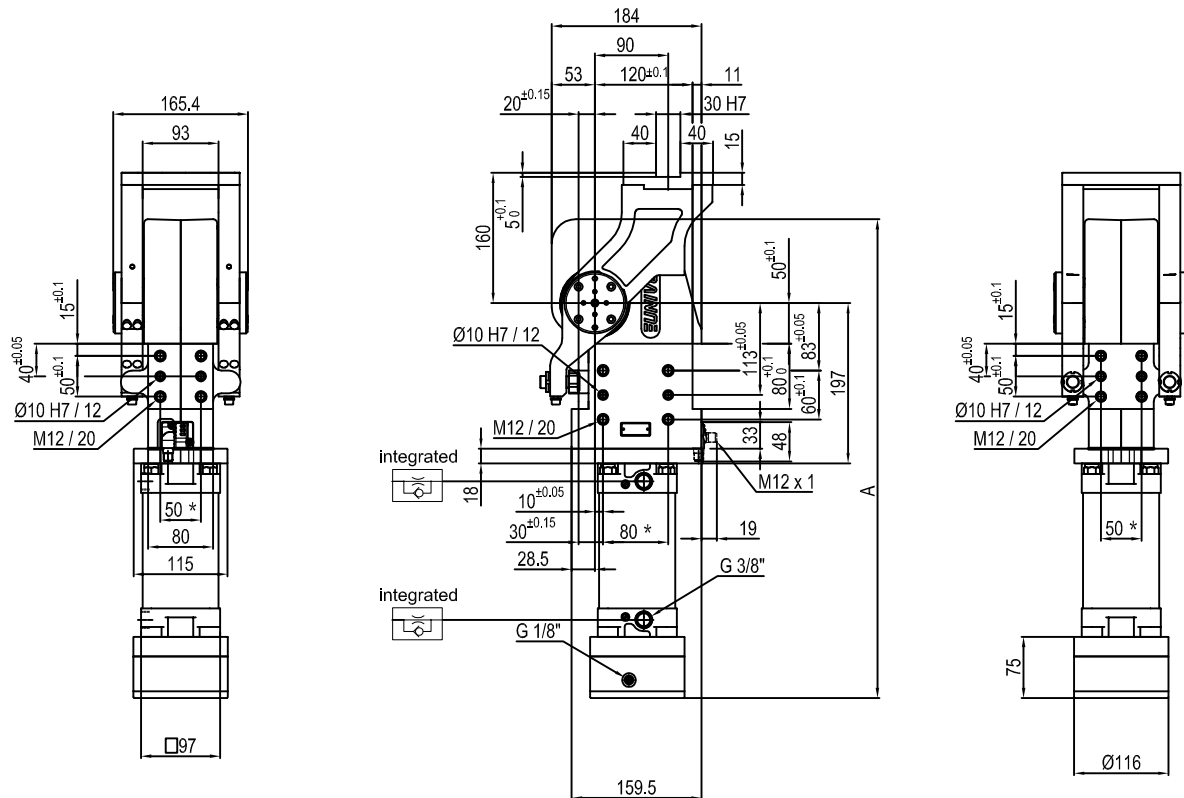
Passive brake



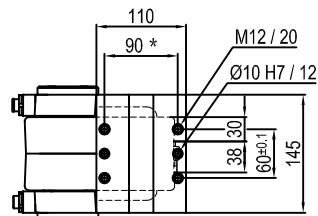
Size	Holding moment	Max. torque at the rotary table 0,55 MPa	Weight
075	6000 Nm	75 Nm	24 Kg

Min./Max. operating pressure: **0,4 / 0,6 MPa**
 Operating temperature: **5° + 45° C**
 Predetermine pivot rotation in degrees: **45° - 60° - 90° - 120°**
 Electronic sensor with M12 swivel connector that can be orientated at 0° or 90°
 Supply voltage: 10-30 V DC
 IP code: **IP 65**

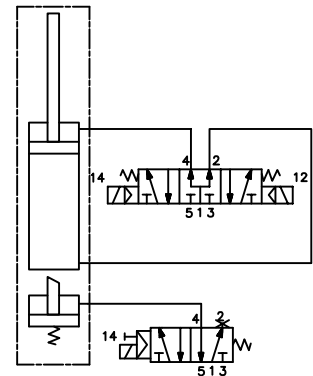
* : TOLERANCE BETWEEN DOWEL HOLES ± 0.02, TO SCREW HOLES ± 0.1



Pivot rotation in degrees	A
45°	574
60°	588



Passive brake



Size	Holding moment	Max. torque at the rotary table 0,55 MPa	Weight
075	6000 Nm	75 Nm	24 Kg

* : TOLERANCE BETWEEN DOWEL HOLES ± 0.02 , TO SCREW HOLES ± 0.1

Min./Max. operating pressure: **0,4 / 0,6 MPa**

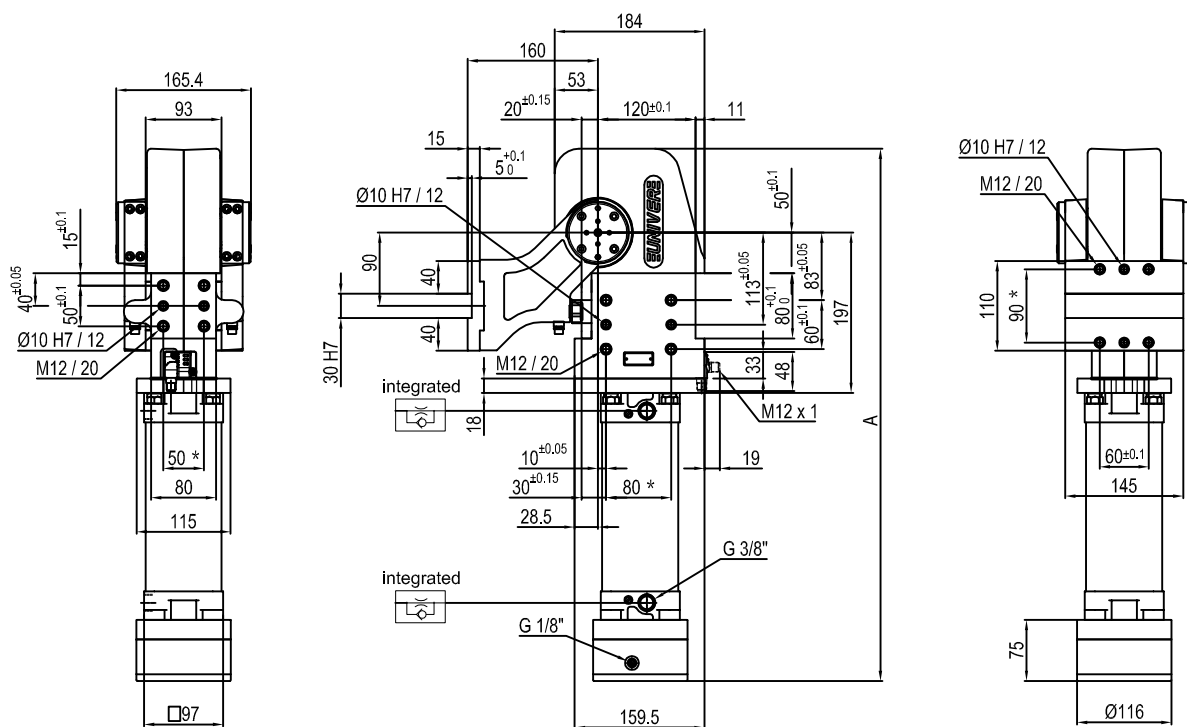
Operating temperature: $5^{\circ} \div 45^{\circ} \text{C}$

Predeterminate pivot rotation in degrees: **45° - 60°**

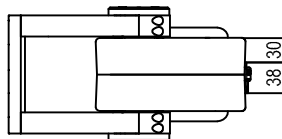
Electronic sensor with M12 swivel connector that can be orientated at 0° or 90°

Supply voltage: 10÷30 V DC

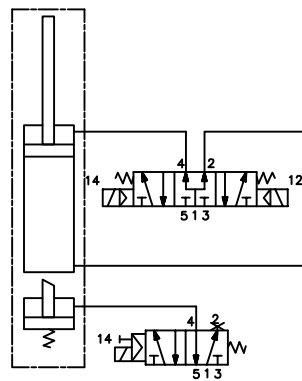
IP code: **IP 65**



Pivot rotation in degrees	A
45°	574
60°	588
90°	619
120°	653.5



Passive brake

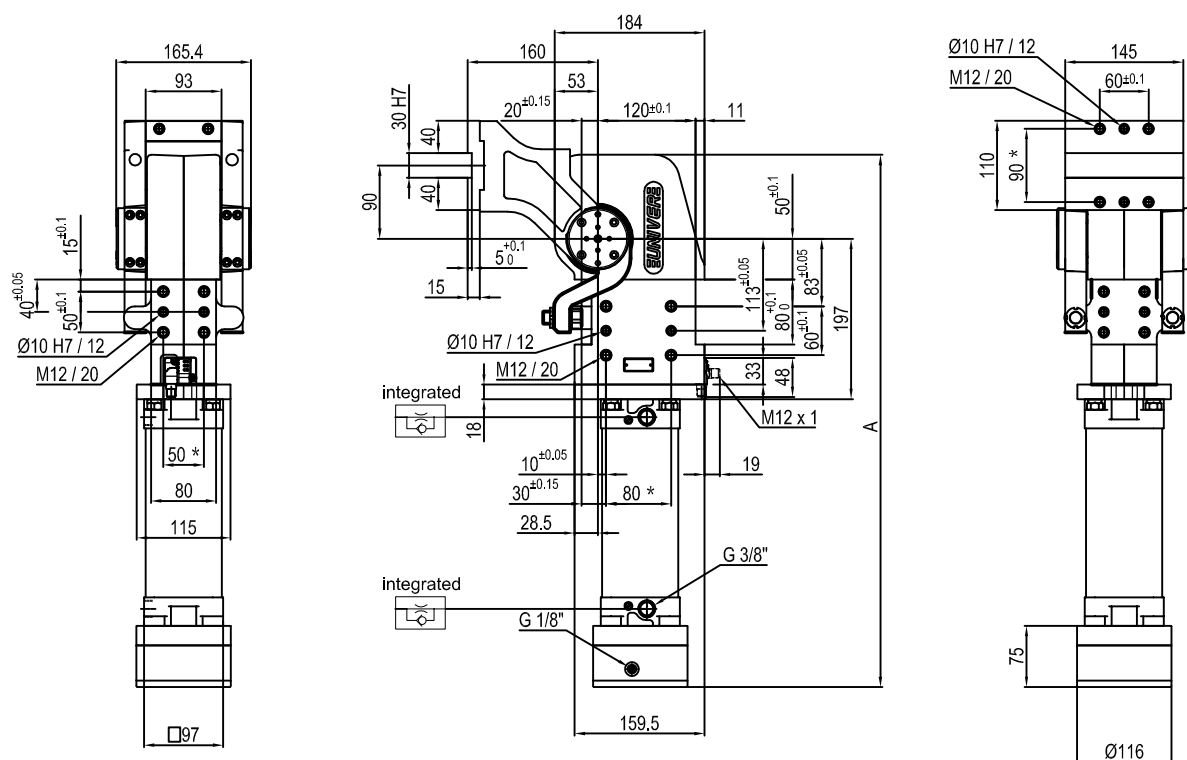


Size	Holding moment	Max. torque at the rotary table 0,55 MPa	Weight
075	6000 Nm	75 Nm	24 Kg

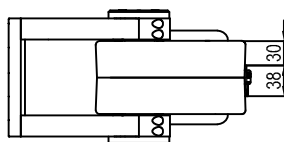
* : TOLERANCE BETWEEN DOWEL HOLES ± 0.02 , TO SCREW HOLES ± 0.1

Min./Max. operating pressure: **0,4 / 0,6 MPa**
 Operating temperature: **5° + 45° C**
 Predetermine pivot rotation in degrees: **45° - 60° - 90° - 120°**
 Electronic sensor with M12 swivel connector that can be orientated at 0° or 90°
 Supply voltage: 10÷30 V DC
 IP code: **IP 65**

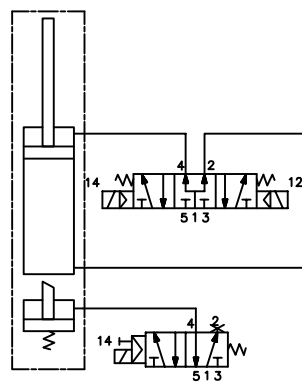
Pneumatic power pivot



Pivot rotation in degrees	A
45°	574
60°	588
90°	619
120°	653.5



Passive brake



Size	Holding moment	Max. torque at the rotary table 0,55 MPa	Weight
075	6000 Nm	75 Nm	24 Kg

* : TOLERANCE BETWEEN DOWEL HOLES ± 0.02 . TO SCREW HOLES ± 0.1

Min./Max. operating pressure: **0,4 / 0,6 MPa**

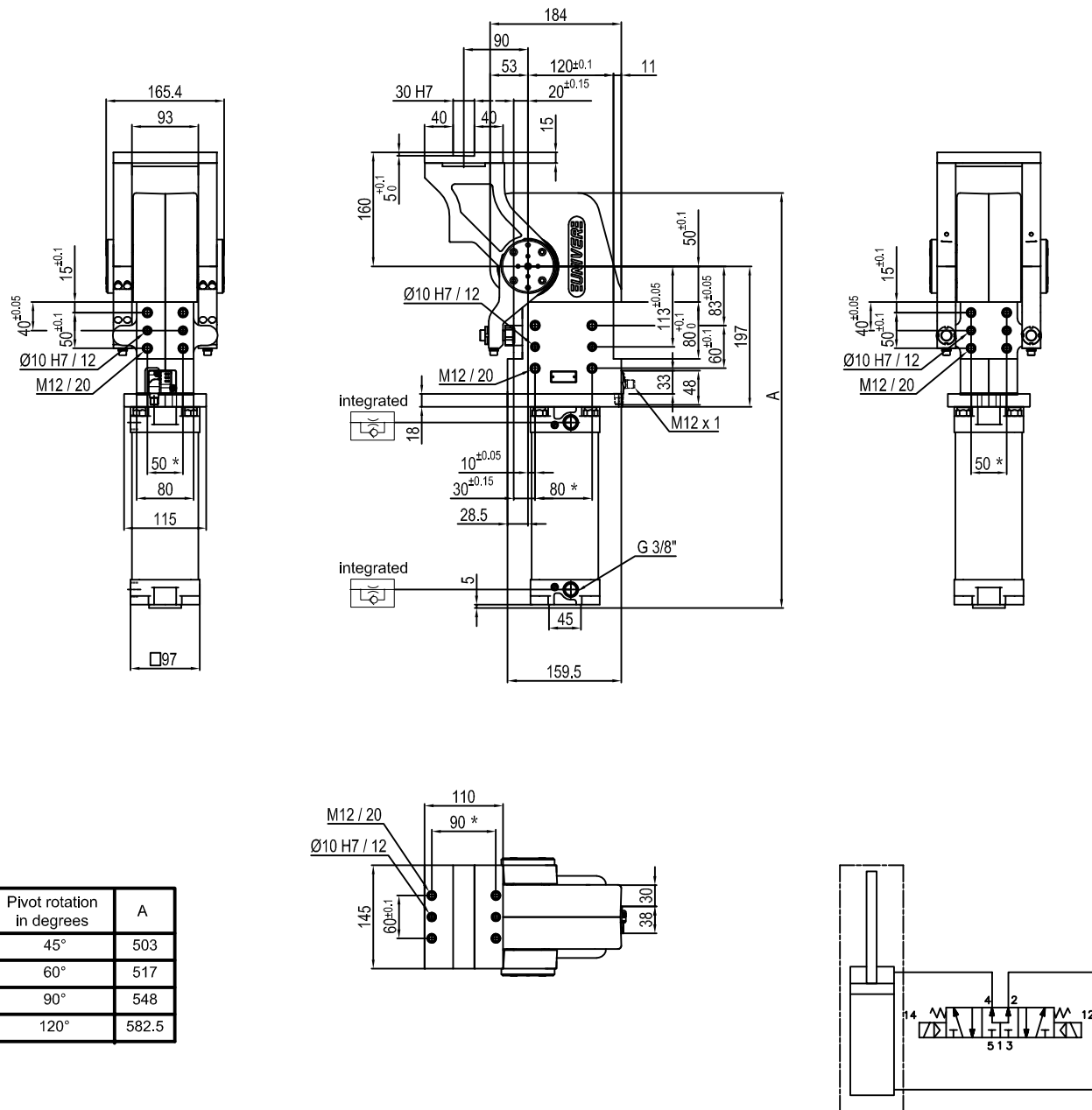
Operating temperature: 5° ÷ 45° C

Predeterminate pivot rotation in degrees: **45° - 60° - 90° - 120°**

Electronic sensor with M12 swivel connector that can be orientated at 0° or 90°

Supply voltage: 10÷30 V DC

IP code: **IP 65**



Pivot rotation in degrees	A
45°	503
60°	517
90°	548
120°	582.5

Size	Holding moment	Max. torque at the rotary table 0,55 MPa	Weight
075	6000 Nm	75 Nm	18 Kg

* : TOLERANCE BETWEEN DOWEL HOLES ± 0.02 , TO SCREW HOLES ± 0.1

Min./Max. operating pressure: 0,4 / 0,6 MPa

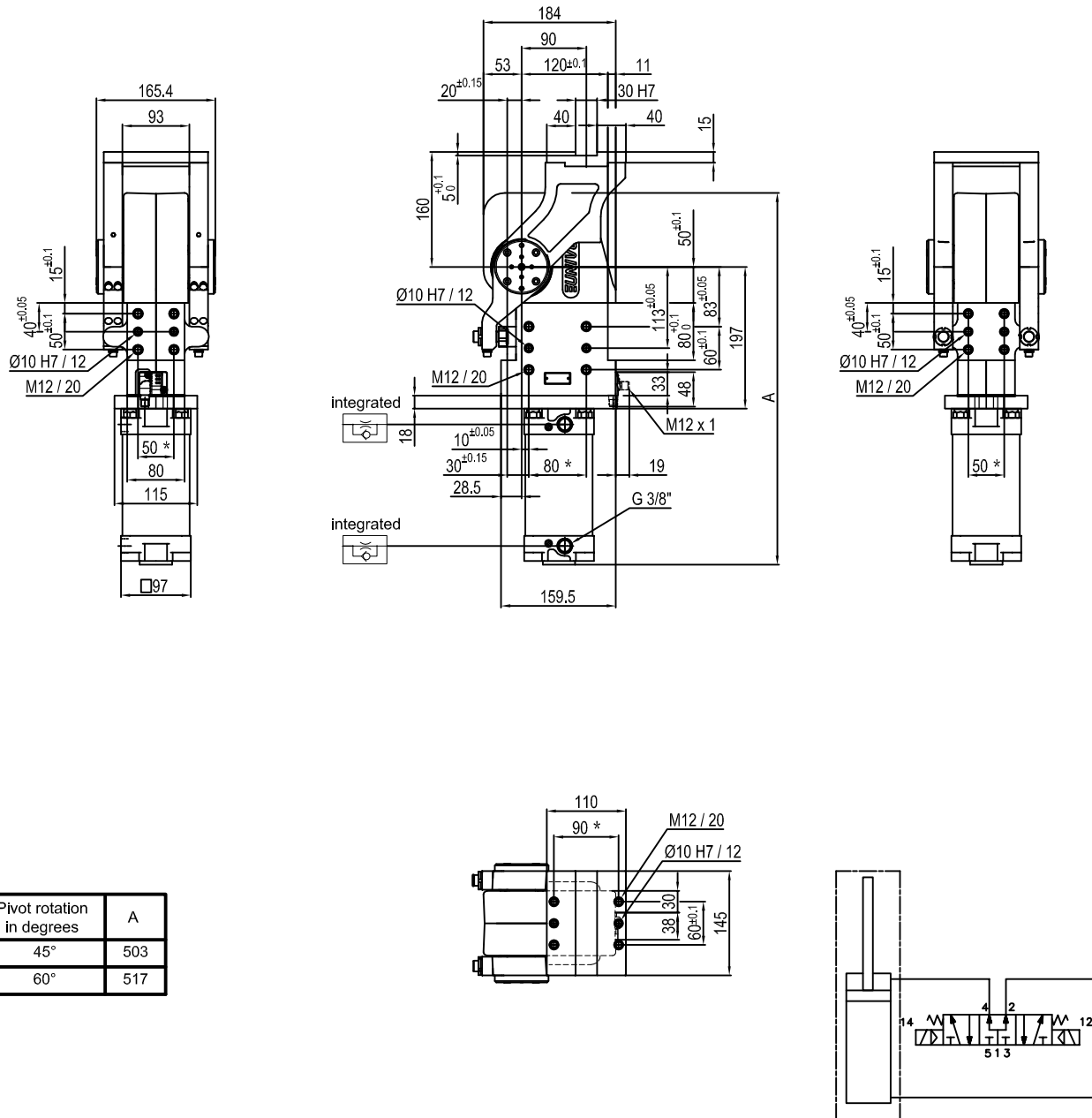
Operating temperature: $5^{\circ} \div 45^{\circ} \text{C}$

Predeterminate pivot rotation in degrees: **45° - 60° - 90° - 120°**

Electronic sensor with M12 swivel connector that can be orientated at 0° or 90°

Supply voltage: 10÷30 V DC

IP code: **IP 65**



Pivot rotation in degrees	A
45°	503
60°	517

Size	Holding moment	Max. torque at the rotary table 0,55 MPa	Weight
075	6000 Nm	75 Nm	18 Kg

* : TOLERANCE BETWEEN DOWEL HOLES ± 0.02 , TO SCREW HOLES ± 0.1

Min./Max. operating pressure: **0,4 / 0,6 MPa**

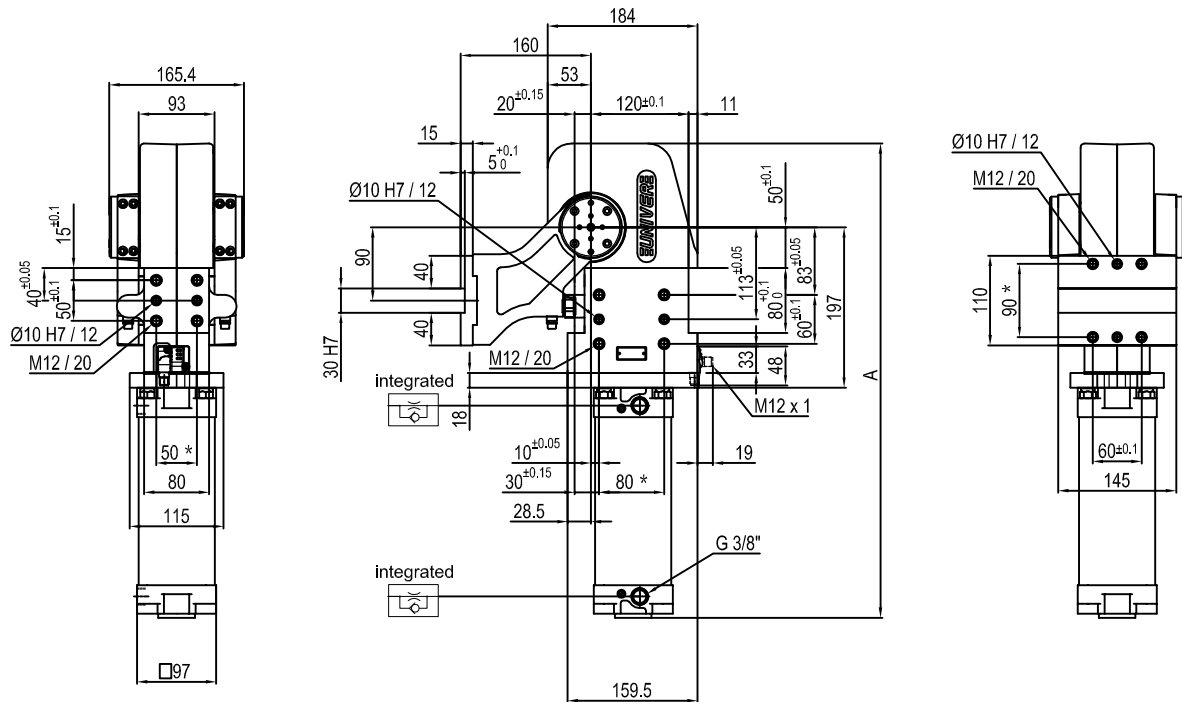
Operating temperature: **5° + 45° C**

Predetermine pivot rotation in degrees: **45° - 60°**

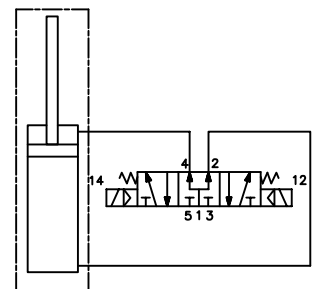
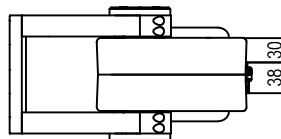
Electronic sensor with M12 swivel connector that can be orientated at 0° or 90°

Supply voltage: 10÷30 V DC

IP code: **IP 65**



Pivot rotation in degrees	A
45°	503
60°	517
90°	548
120°	582.5



Size	Holding moment	Max. torque at the rotary table 0,55 MPa	Weight
075	6000 Nm	75 Nm	18 Kg

* : TOLERANCE BETWEEN DOWEL HOLES ± 0.02 , TO SCREW HOLES ± 0.1

Min./Max. operating pressure: **0,4 / 0,6 MPa**

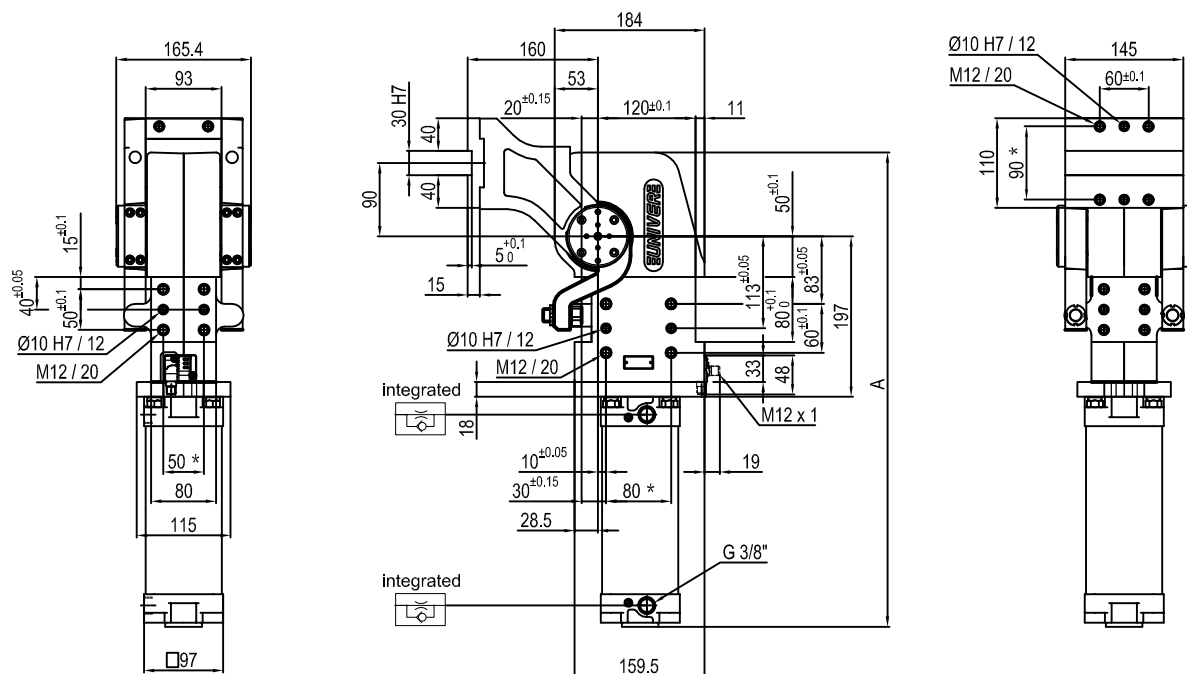
Operating temperature: $5^{\circ} \div 45^{\circ} \text{C}$

Predeterminate pivot rotation in degrees: **45° - 60° - 90° - 120°**

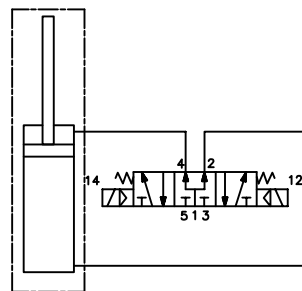
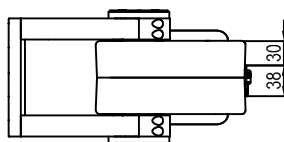
Electronic sensor with M12 swivel connector that can be orientated at 0° or 90°

Supply voltage: 10÷30 V DC

IP code: **IP 65**



Pivot rotation in degrees	A
45°	503
60°	517
90°	548
120°	582.5



Size	Holding moment	Max. torque at the rotary table 0,55 MPa	Weight
075	6000 Nm	75 Nm	18 Kg

Min./Max. operating pressure: **0,4 / 0,6 MPa**
 Operating temperature: **5° + 45° C**
 Predetermine pivot rotation in degrees: **45° - 60° - 90° - 120°**
 Electronic sensor with M12 swivel connector that can be orientated at 0° or 90°
 Supply voltage: 10÷30 V DC
 IP code: **IP 65**

* : TOLERANCE BETWEEN DOWEL HOLES ± 0.02, TO SCREW HOLES ± 0.1