

### CARACTERÍSTICAS

Temperatura	-20 ÷ 80 °C
Fluido	aire filtrado
Presión máx.	15 bar (según el tipo de tubo)
Presión de trabajo	9 bar
Cuerpo	tecnopolímero
Elemento de fijación	latón niquelado con junta tórica de NBR en la versión cilíndrica (estándar) recubrimiento de teflón en la versión cónica (bajo pedido)
Pinza de agarre	acero inox
Anillo para soltar	tecnopolímero
Campos de aplicación	circuitos neumáticos
Tubos de conexión recomendados	poliamida PA 10.12, poliuretano Sh.A98, co-poliuretano Sh.55D

### Reguladores de flujo de tecnopolímero

#### ■ HC01/HC02

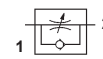
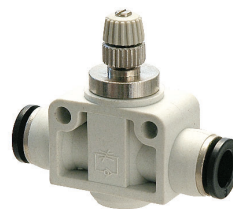
Regulador de flujo orientable unidireccional



Escape	Alimentación	Ø	Conexión
HC0104M5	HC0204M5	4	M5
HC0106M5	HC0206M5	6	M5
HC010418	HC020418	4	G1/8
HC010618	HC020618	6	G1/8
HC010818	HC020818	8	G1/8
HC010414	HC020414	4	G1/4
HC010614	HC020614	6	G1/4
HC010814	HC020814	8	G1/4
HC011014	HC021014	10	G1/4
HC010838	HC020838	8	G3/8
HC011038	HC021038	10	G3/8
HC011238	HC021238	12	G3/8
HC011012	HC021012	10	G1/2
HC011212	HC021212	12	G1/2

#### ■ HC04

Regulador de flujo intermedio unidireccional



	Ø1
HC040404	4
HC040606	6
HC040808	8
HC041010	10
HC041212	12

#### ■ HC01T/HC02T

Regulador de flujo orientable unidireccional - cabeza ranurada



Escape	Alimentación	Ø	Conexión
HC01T0418	HC02T0418	4	G1/8
HC01T0618	HC02T0618	6	G1/8
HC01T0818	HC02T0818	8	G1/8
HC01T1018	HC02T1018	10	G1/8
HC01T1218	HC02T1218	12	G1/8
HC01T0614	HC02T0614	6	G1/4
HC01T0814	HC02T0814	8	G1/4
HC01T1014	HC02T1014	10	G1/4
HC01T1214	HC02T1214	12	G1/4
HC01T0638	HC02T0638	6	G3/8
HC01T0838	HC02T0838	8	G3/8
HC01T1038	HC02T1038	10	G3/8
HC01T1238	HC02T1238	12	G3/8

## CARACTERÍSTICAS

Temperatura	0 ÷ 70 °C
Fluido	aire comprimido
Presión máx.	10 bar
Presión de trabajo	0,3 ÷ 10 bar

## Regulador de flujo con cuerpo metálico

### HC21/HC22

Regulador de flujo orientable unidireccional



	Escape	Alimentación	Ø	conexión
	HC2104M5	HC2204M5	4	M5
	HC210418	HC220418	4	G1/8
	HC210618	HC220618	6	G1/8
	HC210818	HC220818	8	G1/8
	HC210614	HC220614	6	G1/4
	HC210814	HC220814	8	G1/4
	HC211014	HC221014	10	G1/4

### HC18/HC19

Regulador de flujo orientable unidireccional - cabeza ranurada



	Escape	Alimentación	Ø	conexión
	HC1804M5	HC1904M5	4	M5
	HC180418	HC190418	4	G1/8
	HC180618	HC190618	6	G1/8
	HC180818	HC190818	8	G1/8
	HC180614	HC190614	6	G1/4
	HC180814	HC190814	8	G1/4
	HC181014	HC191014	10	G1/4

### HC27/HC28

Regulador de flujo macho/hembra roscado unidireccional

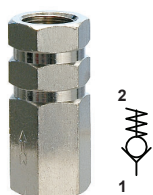


	Escape	Alimentación	conexión
	HC27M5M5	HC28M5M5	M5
	HC271818	HC281818	G1/8
	HC271414	HC281414	G1/4
	HC273838	HC283838	G3/8
	HC271212	HC281212	G1/2

## Válvulas de antirretorno

### HC13

Válvula de antirretorno F-F

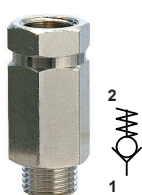


	conexión
HC1300M5	M5
HC130018	G1/8
HC130014	G1/4
HC130038	G3/8
HC130012	G1/2

Bajo pedido juntas para alta temperatura

### HC14

Válvula de antirretorno F-M



	conexión
HC140018	G1/8
HC140014	G1/4

Bajo pedido juntas para alta temperatura

### HC15

Válvula de antirretorno con conexiones rápidas para tubo



	Ø
HC150004	4
HC150006	6
HC150008	8

### HC17

Válvula de antirretorno conexión roscada

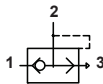


	Ø	conexión
HC170418	4	G1/8
HC170618	6	G1/8
HC170818	8	G1/8
HC170614	6	G1/4
HC170814	8	G1/4
HC171038	10	G3/8
HC171238	12	G3/8
HC171012	10	G1/2
HC171212	12	G1/2

Válvulas de escape rápido

■ HC06

Válvula de escape rápido



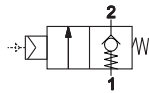
Caudal a 6 bar (NI/min)

	conexión	1→2	2→3
HC0600M5	M5	220	300
HC060018	G1/8	680	1100
HC060014	G1/4	1200	2100
HC060038	G3/8	2300	4800
HC060012	G1/2	3400	6100
HC060034	G3/4	3200	8750
HC060001	G1	2900	10.750

Válvula de bloqueo

Miniregulador de presión 0 ÷ 8 bar

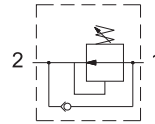
■ HC34



HB40 anillo individual

	M	F	Caudal a 6 bar (NI/min)
HC3418M5	G1/8	M5	400
HC3414M5	G1/4	M5	850
HC343818	G3/8	G1/8	1250

■ HC35



HB40 anillo individual

	conexión	Caudal a 6 bar (NI/min)
HC350018	G1/8	580
HC350014	G1/4	750

CARACTERÍSTICAS

Temperatura

-25 ÷ 90 °C

0 ÷ 60 °C (tecnopolímero HC11-12)

Fluido

aire filtrado, vacío

Presión máx.

15 bar

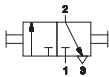
Presión de trabajo

0 ÷ 10 bar

Válvulas manuales de línea

■ HC05

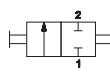
Válvula de descarga



	conexión
HC0500M5	M5
HC050018	G1/8
HC050014	G1/4
HC050038	G3/8
HC050012	G1/2
HC050034	G3/4

■ HC07

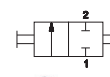
Grifo de bola F/F



	conexión
HC070018	G1/8
HC070014	G1/4
HC070038	G3/8
HC070012	G1/2
HC070034	G3/4

■ HC08

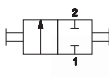
Grifo de bola M/F



	conexión
HC080018	G1/8
HC080014	G1/4
HC080038	G3/8
HC080012	G1/2
HC080034	G3/4

■ HC09

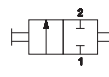
Mini grifo de bola F-F con pomo negro



	conexión
HC090018	G1/8
HC090014	G1/4

■ HC10

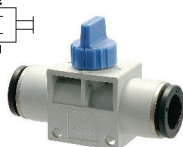
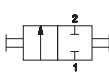
Mini grifo de bola M-F con pomo negro



	conexión
HC100018	G1/8
HC100014	G1/4

■ HC11

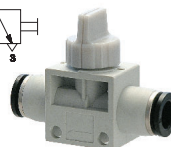
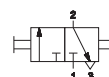
Mini válvula manual 2/2



	Ø
HC110606	6
HC110808	8
HC111010	10
HC111212	12

■ HC12

Mini válvula manual 3/2



	Ø
HC120606	6
HC120808	8
HC121010	10
HC121212	12

Silenciadores

<p>■ <b>HC51</b> Silenciador llano de bronce sinterizado</p>  <table border="0"> <thead> <tr> <th></th> <th>conexión</th> </tr> </thead> <tbody> <tr><td>HC5100M5</td><td>M5</td></tr> <tr><td>HC510018</td><td>G1/8</td></tr> <tr><td>HC510014</td><td>G1/4</td></tr> <tr><td>HC510038</td><td>G3/8</td></tr> <tr><td>HC510012</td><td>G1/2</td></tr> <tr><td>HC510034</td><td>G3/4</td></tr> <tr><td>HC510001</td><td>G1</td></tr> <tr><td>HC510112</td><td>G1 1/2</td></tr> </tbody> </table>		conexión	HC5100M5	M5	HC510018	G1/8	HC510014	G1/4	HC510038	G3/8	HC510012	G1/2	HC510034	G3/4	HC510001	G1	HC510112	G1 1/2	<p>■ <b>HC52</b> Silenciador cónico de bronce sinterizado</p>  <table border="0"> <thead> <tr> <th></th> <th>conexión</th> </tr> </thead> <tbody> <tr><td>HC5200M5</td><td>M5</td></tr> <tr><td>HC520018</td><td>G1/8</td></tr> <tr><td>HC520014</td><td>G1/4</td></tr> <tr><td>HC520038</td><td>G3/8</td></tr> <tr><td>HC520012</td><td>G1/2</td></tr> <tr><td>HC520034</td><td>G3/4</td></tr> <tr><td>HC520001</td><td>G1</td></tr> </tbody> </table>		conexión	HC5200M5	M5	HC520018	G1/8	HC520014	G1/4	HC520038	G3/8	HC520012	G1/2	HC520034	G3/4	HC520001	G1	<p>■ <b>HC53</b> Silenciador cónico de bronce sinterizado con cabeza cuadrada</p>  <table border="0"> <thead> <tr> <th></th> <th>conexión</th> </tr> </thead> <tbody> <tr><td>HC5300M5</td><td>M5</td></tr> <tr><td>HC530018</td><td>G1/8</td></tr> <tr><td>HC530014</td><td>G1/4</td></tr> <tr><td>HC530038</td><td>G3/8</td></tr> <tr><td>HC530012</td><td>G1/2</td></tr> <tr><td>HC530034</td><td>G3/4</td></tr> <tr><td>HC530001</td><td>G1</td></tr> </tbody> </table>		conexión	HC5300M5	M5	HC530018	G1/8	HC530014	G1/4	HC530038	G3/8	HC530012	G1/2	HC530034	G3/4	HC530001	G1
	conexión																																																			
HC5100M5	M5																																																			
HC510018	G1/8																																																			
HC510014	G1/4																																																			
HC510038	G3/8																																																			
HC510012	G1/2																																																			
HC510034	G3/4																																																			
HC510001	G1																																																			
HC510112	G1 1/2																																																			
	conexión																																																			
HC5200M5	M5																																																			
HC520018	G1/8																																																			
HC520014	G1/4																																																			
HC520038	G3/8																																																			
HC520012	G1/2																																																			
HC520034	G3/4																																																			
HC520001	G1																																																			
	conexión																																																			
HC5300M5	M5																																																			
HC530018	G1/8																																																			
HC530014	G1/4																																																			
HC530038	G3/8																																																			
HC530012	G1/2																																																			
HC530034	G3/4																																																			
HC530001	G1																																																			
<p>■ <b>HC54</b> Silenciador con regulador de escape estrecho</p>  <table border="0"> <thead> <tr> <th></th> <th>conexión</th> </tr> </thead> <tbody> <tr><td>HC5400M5</td><td>M5</td></tr> <tr><td>HC540018</td><td>G1/8</td></tr> <tr><td>HC540014</td><td>G1/4</td></tr> <tr><td>HC540038</td><td>G3/8</td></tr> <tr><td>HC540012</td><td>G1/2</td></tr> <tr><td>HC540034</td><td>G3/4</td></tr> <tr><td>HC540001</td><td>G1</td></tr> </tbody> </table>		conexión	HC5400M5	M5	HC540018	G1/8	HC540014	G1/4	HC540038	G3/8	HC540012	G1/2	HC540034	G3/4	HC540001	G1	<p>■ <b>HC55</b> Silenciador con regulador de escape</p>  <table border="0"> <thead> <tr> <th></th> <th>conexión</th> </tr> </thead> <tbody> <tr><td>HC5500M5</td><td>M5</td></tr> <tr><td>HC550018</td><td>G1/8</td></tr> <tr><td>HC550014</td><td>G1/4</td></tr> <tr><td>HC550038</td><td>G3/8</td></tr> <tr><td>HC550012</td><td>G1/2</td></tr> <tr><td>HC550034</td><td>G3/4</td></tr> <tr><td>HC550001</td><td>G1</td></tr> </tbody> </table>		conexión	HC5500M5	M5	HC550018	G1/8	HC550014	G1/4	HC550038	G3/8	HC550012	G1/2	HC550034	G3/4	HC550001	G1	<p>■ <b>HC56</b> Silenciador dinámico de tecnopolímero</p>  <table border="0"> <thead> <tr> <th></th> <th>conexión</th> </tr> </thead> <tbody> <tr><td>HC560018</td><td>G1/8</td></tr> <tr><td>HC560014</td><td>G1/4</td></tr> <tr><td>HC560038</td><td>G3/8</td></tr> <tr><td>HC560012</td><td>G1/2</td></tr> <tr><td>HC560034</td><td>G3/4</td></tr> <tr><td>HC560001</td><td>G1</td></tr> </tbody> </table>		conexión	HC560018	G1/8	HC560014	G1/4	HC560038	G3/8	HC560012	G1/2	HC560034	G3/4	HC560001	G1				
	conexión																																																			
HC5400M5	M5																																																			
HC540018	G1/8																																																			
HC540014	G1/4																																																			
HC540038	G3/8																																																			
HC540012	G1/2																																																			
HC540034	G3/4																																																			
HC540001	G1																																																			
	conexión																																																			
HC5500M5	M5																																																			
HC550018	G1/8																																																			
HC550014	G1/4																																																			
HC550038	G3/8																																																			
HC550012	G1/2																																																			
HC550034	G3/4																																																			
HC550001	G1																																																			
	conexión																																																			
HC560018	G1/8																																																			
HC560014	G1/4																																																			
HC560038	G3/8																																																			
HC560012	G1/2																																																			
HC560034	G3/4																																																			
HC560001	G1																																																			
<p>■ <b>HC57</b> Silenciador plástico polietilene</p>  <table border="0"> <thead> <tr> <th></th> <th>conexión</th> </tr> </thead> <tbody> <tr><td>HC5700M5</td><td>M5</td></tr> <tr><td>HC570018</td><td>G1/8</td></tr> <tr><td>HC570014</td><td>G1/4</td></tr> <tr><td>HC570038</td><td>G3/8</td></tr> <tr><td>HC570012</td><td>G1/2</td></tr> <tr><td>HC570034</td><td>G3/4</td></tr> <tr><td>HC570001</td><td>G1</td></tr> </tbody> </table>		conexión	HC5700M5	M5	HC570018	G1/8	HC570014	G1/4	HC570038	G3/8	HC570012	G1/2	HC570034	G3/4	HC570001	G1	<p>■ <b>HC58</b> Silenciador de tecnopolímero</p>  <table border="0"> <thead> <tr> <th></th> <th>conexión</th> </tr> </thead> <tbody> <tr><td>HC580018</td><td>G1/8</td></tr> <tr><td>HC580014</td><td>G1/4</td></tr> <tr><td>HC580038</td><td>G3/8</td></tr> <tr><td>HC580012</td><td>G1/2</td></tr> <tr><td>HC580034</td><td>G3/4</td></tr> <tr><td>HC580001</td><td>G1</td></tr> </tbody> </table>		conexión	HC580018	G1/8	HC580014	G1/4	HC580038	G3/8	HC580012	G1/2	HC580034	G3/4	HC580001	G1	<p>■ <b>HC59</b> Silenciador con cabeza redonda de acero</p>  <table border="0"> <thead> <tr> <th></th> <th>conexión</th> </tr> </thead> <tbody> <tr><td>HC5900M5</td><td>M5</td></tr> <tr><td>HC590018</td><td>G1/8</td></tr> <tr><td>HC590014</td><td>G1/4</td></tr> <tr><td>HC590038</td><td>G3/8</td></tr> <tr><td>HC590012</td><td>G1/2</td></tr> <tr><td>HC590034</td><td>G3/4</td></tr> <tr><td>HC590001</td><td>G1</td></tr> </tbody> </table>		conexión	HC5900M5	M5	HC590018	G1/8	HC590014	G1/4	HC590038	G3/8	HC590012	G1/2	HC590034	G3/4	HC590001	G1				
	conexión																																																			
HC5700M5	M5																																																			
HC570018	G1/8																																																			
HC570014	G1/4																																																			
HC570038	G3/8																																																			
HC570012	G1/2																																																			
HC570034	G3/4																																																			
HC570001	G1																																																			
	conexión																																																			
HC580018	G1/8																																																			
HC580014	G1/4																																																			
HC580038	G3/8																																																			
HC580012	G1/2																																																			
HC580034	G3/4																																																			
HC580001	G1																																																			
	conexión																																																			
HC5900M5	M5																																																			
HC590018	G1/8																																																			
HC590014	G1/4																																																			
HC590038	G3/8																																																			
HC590012	G1/2																																																			
HC590034	G3/4																																																			
HC590001	G1																																																			
<p>■ <b>HC60</b> Silenciador cónico con niple hexagonal</p>  <table border="0"> <thead> <tr> <th></th> <th>conexión</th> </tr> </thead> <tbody> <tr><td>HC6000M5</td><td>M5</td></tr> <tr><td>HC600018</td><td>G1/8</td></tr> <tr><td>HC600014</td><td>G1/4</td></tr> <tr><td>HC600038</td><td>G3/8</td></tr> <tr><td>HC600012</td><td>G1/2</td></tr> <tr><td>HC600034</td><td>G3/4</td></tr> <tr><td>HC600001</td><td>G1</td></tr> <tr><td>HC600112</td><td>G1 1/2</td></tr> </tbody> </table>		conexión	HC6000M5	M5	HC600018	G1/8	HC600014	G1/4	HC600038	G3/8	HC600012	G1/2	HC600034	G3/4	HC600001	G1	HC600112	G1 1/2	<p>■ <b>HC61</b> Silenciador empotrado</p>  <table border="0"> <thead> <tr> <th></th> <th>conexión</th> </tr> </thead> <tbody> <tr><td>HC6100M5</td><td>M5</td></tr> <tr><td>HC610018</td><td>G1/8</td></tr> <tr><td>HC610014</td><td>G1/4</td></tr> <tr><td>HC610038</td><td>G3/8</td></tr> <tr><td>HC610012</td><td>G1/2</td></tr> <tr><td>HC610034</td><td>G3/4</td></tr> <tr><td>HC610001</td><td>G1</td></tr> </tbody> </table>		conexión	HC6100M5	M5	HC610018	G1/8	HC610014	G1/4	HC610038	G3/8	HC610012	G1/2	HC610034	G3/4	HC610001	G1																	
	conexión																																																			
HC6000M5	M5																																																			
HC600018	G1/8																																																			
HC600014	G1/4																																																			
HC600038	G3/8																																																			
HC600012	G1/2																																																			
HC600034	G3/4																																																			
HC600001	G1																																																			
HC600112	G1 1/2																																																			
	conexión																																																			
HC6100M5	M5																																																			
HC610018	G1/8																																																			
HC610014	G1/4																																																			
HC610038	G3/8																																																			
HC610012	G1/2																																																			
HC610034	G3/4																																																			
HC610001	G1																																																			