

UNM50

UNIVERSAL Power clamps with hand lever conforming to NAAMS Standard



| | | | | | | | | | |
|---|---|---|---|---|---|---|---|---|---|
| U | N | M | 5 | 0 | N | N | K | N | H |
| 1 | 2 | 3 | 4 | 5 | 6 | 7 | | | |



| | | |
|-----------------|------------------|---------------|
| 1 Series | 2 Version | 3 Size |
|-----------------|------------------|---------------|

UN = UNIVERSAL Power clamps conforming to NAAMS Standard fully adjustable opening angle: 0° to 135° Max

M = Pneumatic with hand lever

50 = Ø 50 mm

| | | |
|-----------------------|-----------------------|-----------------|
| 4 Arm position | 5 Square shaft | 6 Sensor |
|-----------------------|-----------------------|-----------------|

N = No arm

R = Right side only

L = Left side only

N = Both sides

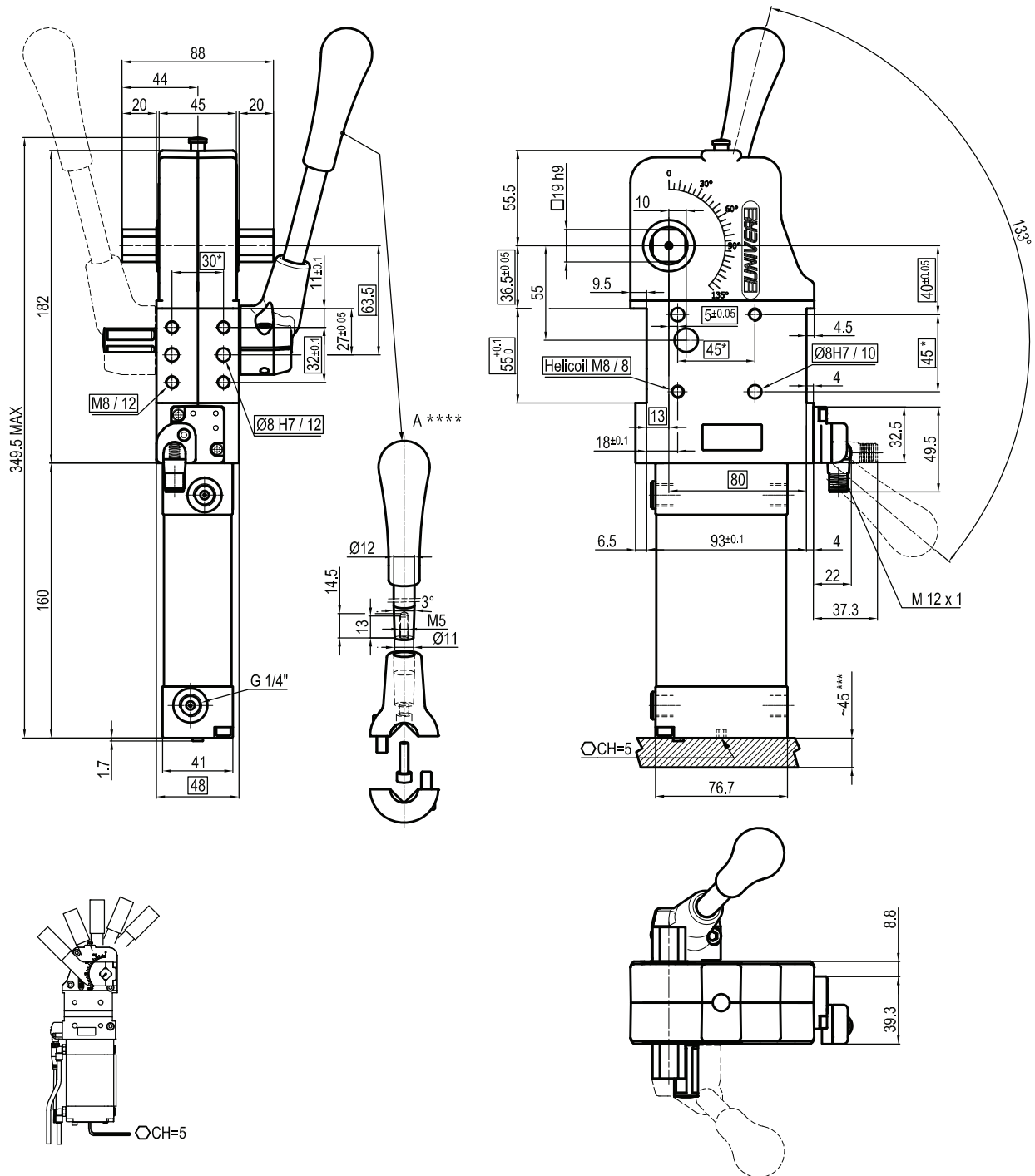
N = No sensor (with protection plate)

K = Electronic sensor PNP (optical) (DF-K)

| |
|----------------------|
| 7 Port thread |
|----------------------|

G = Gas

NH = NPT

UNM50NNKG


| Bore Ø | Holding moment | Clamping moment (0,5 MPa) | Weight (clamping arm not included) |
|--------|----------------|---------------------------|------------------------------------|
| 50 mm | 1250 Nm | 280 Nm | 3,5 Kg |

 Min./Max. operating pressure: **0,4 / 0,6 MPa**

 Operating temperature: **5° ÷ 45° C**

 Opening angle: **adjustable**

Without arm

With manual lever

Electronic sensor with M12 swivel connector, from 0° to 90°

Supply voltage: 10 ÷ 30 Vdc

 IP code: **IP 65**

Pneumatic ports on both sides

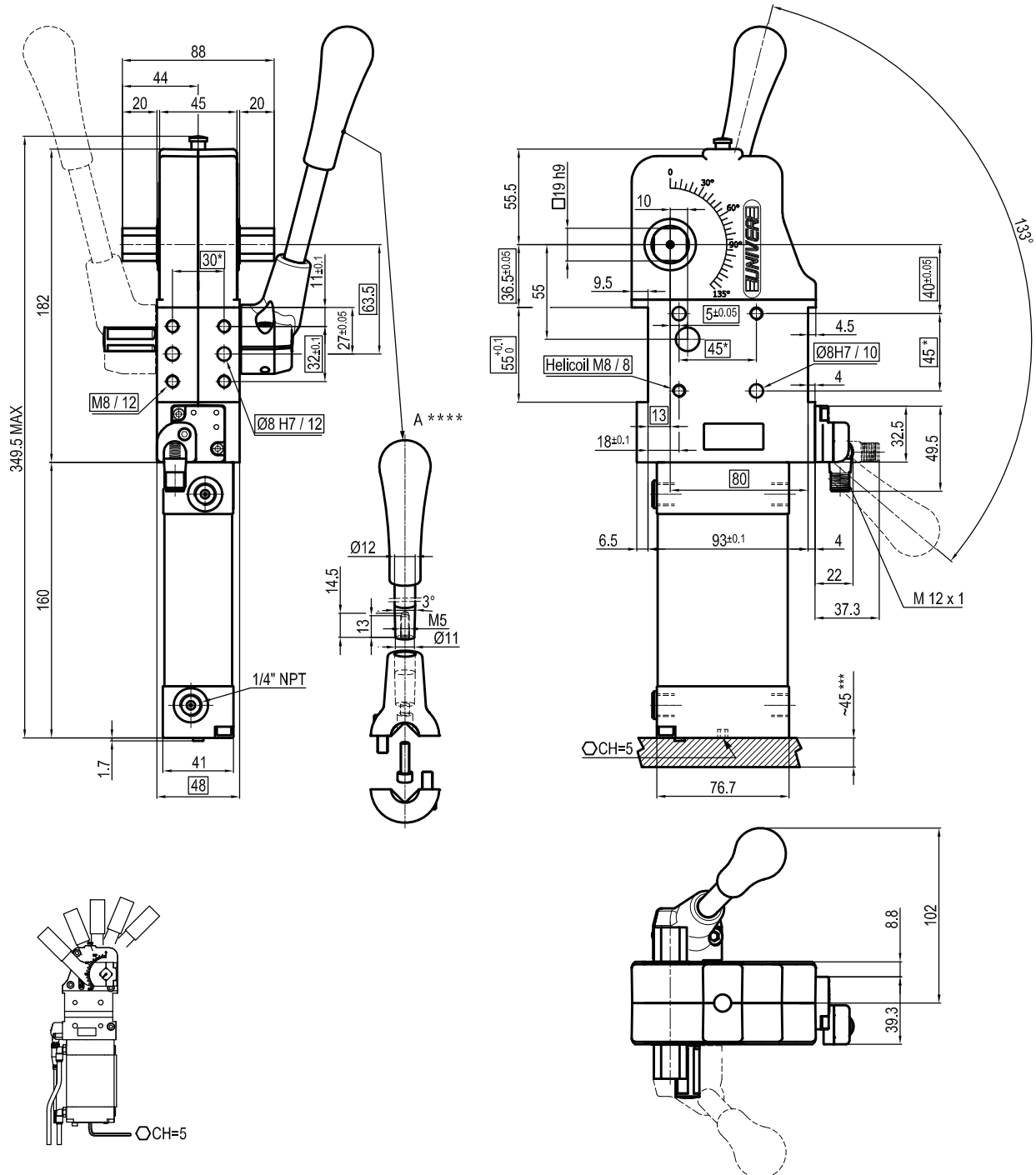
*: TOLERANCE BETWEEN DOWELS ± 0,02, BETWEEN SCREW HOLES ± 0,1

**: THE MEASURES REFER TO NAAMS STANDARD

***: AREA TO ACCESS ANGLE ADJUSTMENT

****: DIMENSIONS TO BE RESPECTED IN CASE OTHER MANUAL LEVERS ARE USED

Subject to technical modifications without notice

UNM50NNKNH


| Bore Ø | Holding moment | Clamping moment (0,5 MPa) | Weight (clamping arm not included) |
|-----------|-------------------|------------------------------|---------------------------------------|
| 50 mm | 1250 Nm | 280 Nm | 3,5 Kg |

 Min./Max. operating pressure: **0,4 / 0,6 MPa**

 Operating temperature: **5° ÷ 45° C**

 Opening angle: **adjustable**

Without arm

With manual lever

Electronic sensor with M12 swivel connector, from 0° to 90°

Supply voltage: 10 ÷ 30 Vdc

 IP code: **IP 65**

Pneumatic ports on both sides

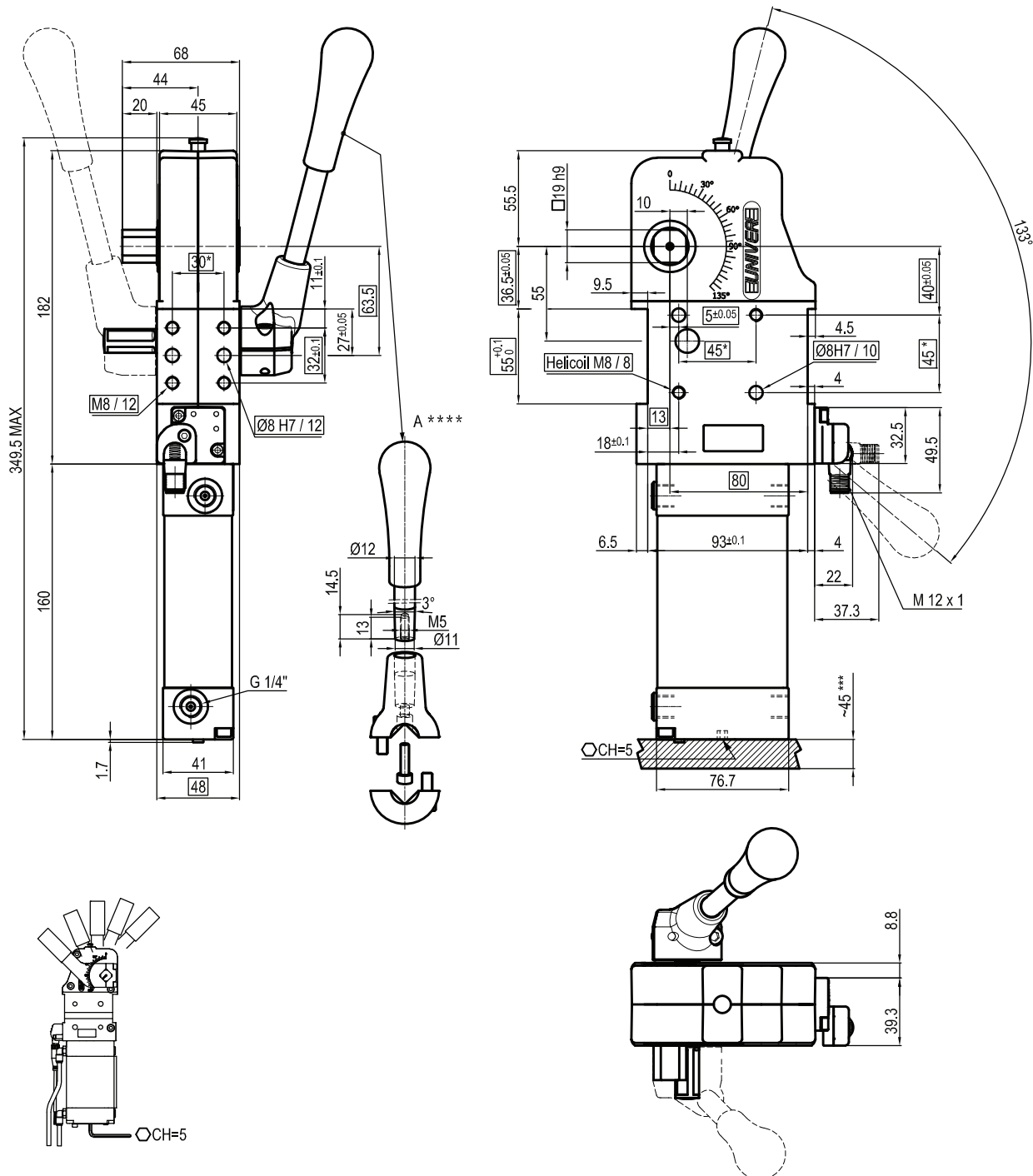
*: TOLERANCE BETWEEN DOWELS ± 0,02, BETWEEN SCREW HOLES ± 0,1

**: THE MEASURES REFER TO NAAMS STANDARD

***: AREA TO ACCESS ANGLE ADJUSTMENT

****: DIMENSIONS TO BE RESPECTED IN CASE OTHER MANUAL LEVERS ARE USED

Subject to technical modifications without notice

UNM50NLKG


| Bore Ø | Holding moment | Clamping moment (0,5 MPa) | Weight (clamping arm not included) |
|--------|----------------|---------------------------|------------------------------------|
| 50 mm | 1250 Nm | 280 Nm | 3,5 Kg |

 Min./Max. operating pressure: **0,4 / 0,6 MPa**

 Operating temperature: **5° ÷ 45° C**

 Opening angle: **adjustable**

Without arm

With manual lever

Electronic sensor with M12 swivel connector, from 0° to 90°

Supply voltage: 10 ÷ 30 Vdc

 IP code: **IP 65**

Pneumatic ports on both sides

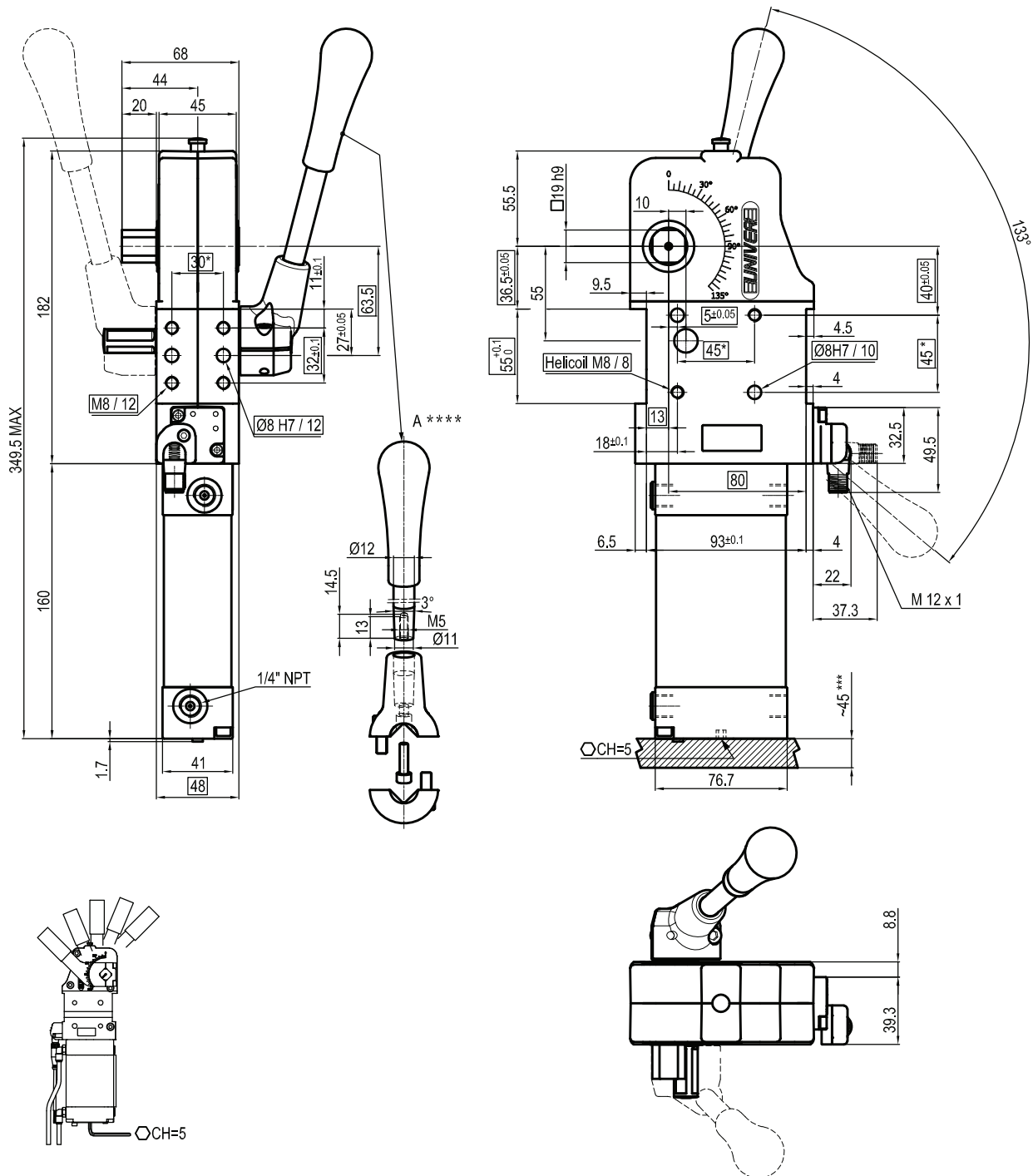
*: TOLERANCE BETWEEN DOWELS ± 0,02, BETWEEN SCREW HOLES ± 0,1

**: THE MEASURES REFER TO NAAMS STANDARD

***: AREA TO ACCESS ANGLE ADJUSTMENT

****: DIMENSIONS TO BE RESPECTED IN CASE OTHER MANUAL LEVERS ARE USED

Subject to technical modifications without notice

UNM50NLKNH


| Bore Ø | Holding moment | Clamping moment (0,5 MPa) | Weight (clamping arm not included) |
|-----------|-------------------|------------------------------|---------------------------------------|
| 50 mm | 1250 Nm | 280 Nm | 3,5 Kg |

 Min./Max. operating pressure: **0,4 / 0,6 MPa**

 Operating temperature: **5° ÷ 45° C**

 Opening angle: **adjustable**

Without arm

With manual lever

Electronic sensor with M12 swivel connector, from 0° to 90°

Supply voltage: 10 ÷ 30 Vdc

 IP code: **IP 65**

Pneumatic ports on both sides

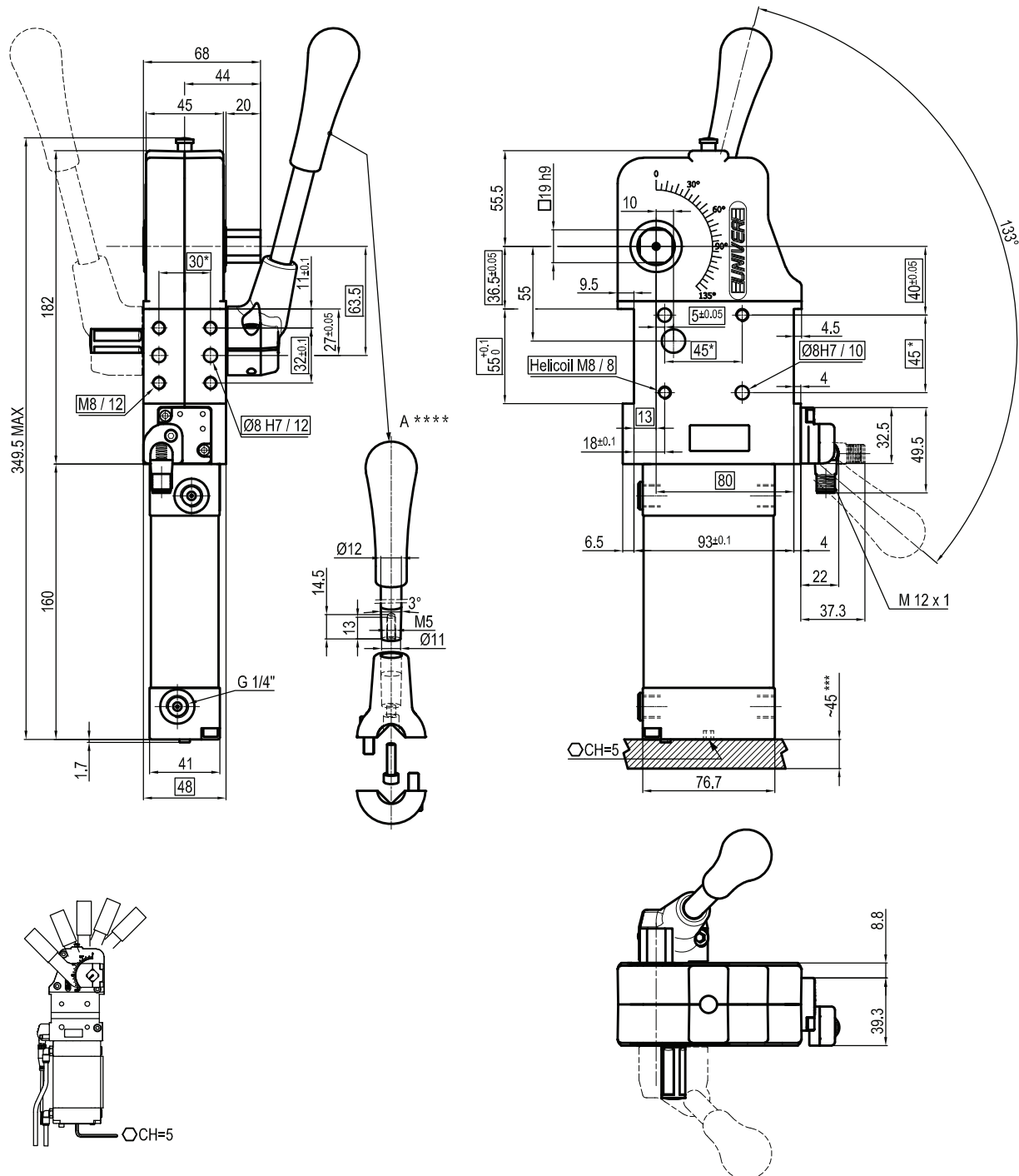
*: TOLERANCE BETWEEN DOWELS ± 0,02, BETWEEN SCREW HOLES ± 0,1

**: THE MEASURES REFER TO NAAMS STANDARD

***: AREA TO ACCESS ANGLE ADJUSTMENT

****: DIMENSIONS TO BE RESPECTED IN CASE OTHER MANUAL LEVERS ARE USED

Subject to technical modifications without notice

UNM50NRKG


| Bore Ø | Holding moment | Clamping moment (0,5 MPa) | Weight (clamping arm not included) |
|-----------|-------------------|------------------------------|---------------------------------------|
| 50 mm | 1250 Nm | 280 Nm | 3,5 Kg |

 Min./Max. operating pressure: **0,4 / 0,6 MPa**

 Operating temperature: **5° ÷ 45° C**

 Opening angle: **adjustable**

Without arm

With manual lever

Electronic sensor with M12 swivel connector, from 0° to 90°

Supply voltage: 10 ÷ 30 Vdc

 IP code: **IP 65**

Pneumatic ports on both sides

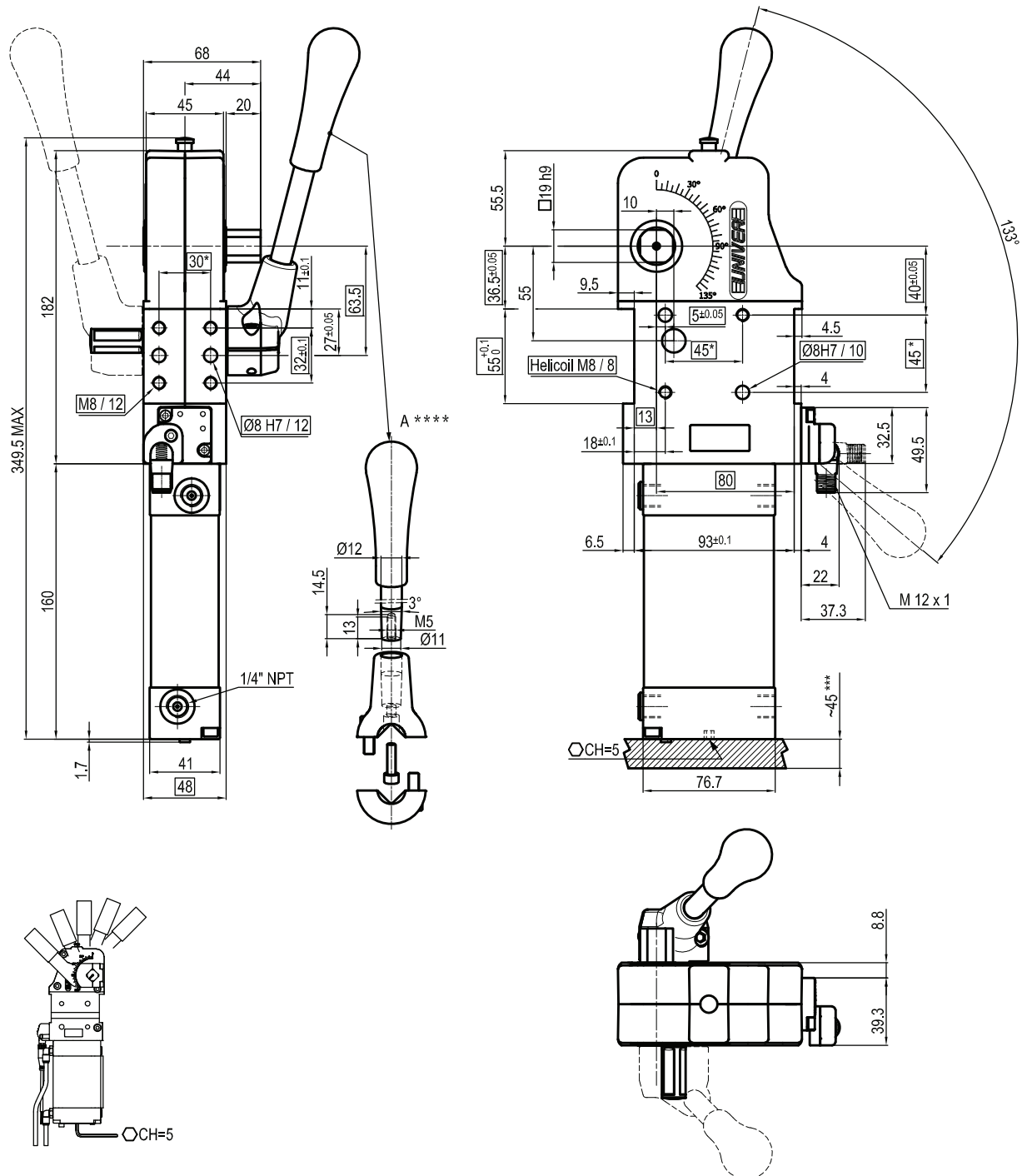
*: TOLERANCE BETWEEN DOWELS ± 0,02, BETWEEN SCREW HOLES ± 0,1

**: THE MEASURES REFER TO NAAMS STANDARD

***: AREA TO ACCESS ANGLE ADJUSTMENT

****: DIMENSIONS TO BE RESPECTED IN CASE OTHER MANUAL LEVERS ARE USED

Subject to technical modifications without notice

UNM50NRKNH


| Bore Ø | Holding moment | Clamping moment (0,5 MPa) | Weight (clamping arm not included) |
|--------|----------------|---------------------------|------------------------------------|
| 50 mm | 1250 Nm | 280 Nm | 3,5 Kg |

 Min./Max. operating pressure: **0,4 / 0,6 MPa**

 Operating temperature: **5° ÷ 45° C**

 Opening angle: **adjustable**

Without arm

With manual lever

Electronic sensor with M12 swivel connector, from 0° to 90°

Supply voltage: 10 ÷ 30 Vdc

 IP code: **IP 65**

Pneumatic ports on both sides

*: TOLERANCE BETWEEN DOWELS ± 0,02, BETWEEN SCREW HOLES ± 0,1

**: THE MEASURES REFER TO NAAMS STANDARD

***: AREA TO ACCESS ANGLE ADJUSTMENT

****: DIMENSIONS TO BE RESPECTED IN CASE OTHER MANUAL LEVERS ARE USED

Subject to technical modifications without notice