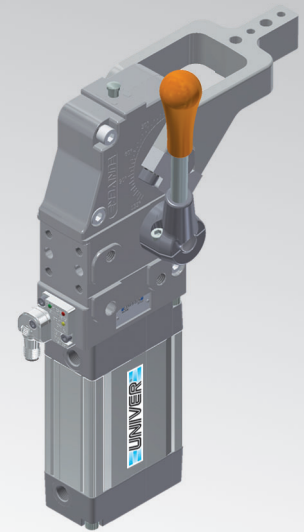


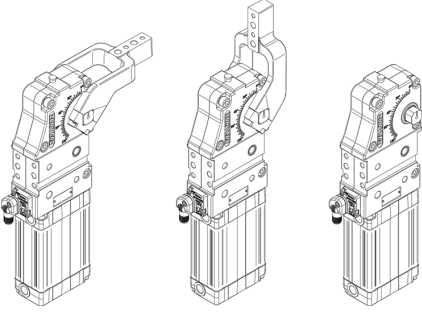
UBQ63

UNIVERSAL Power clamps

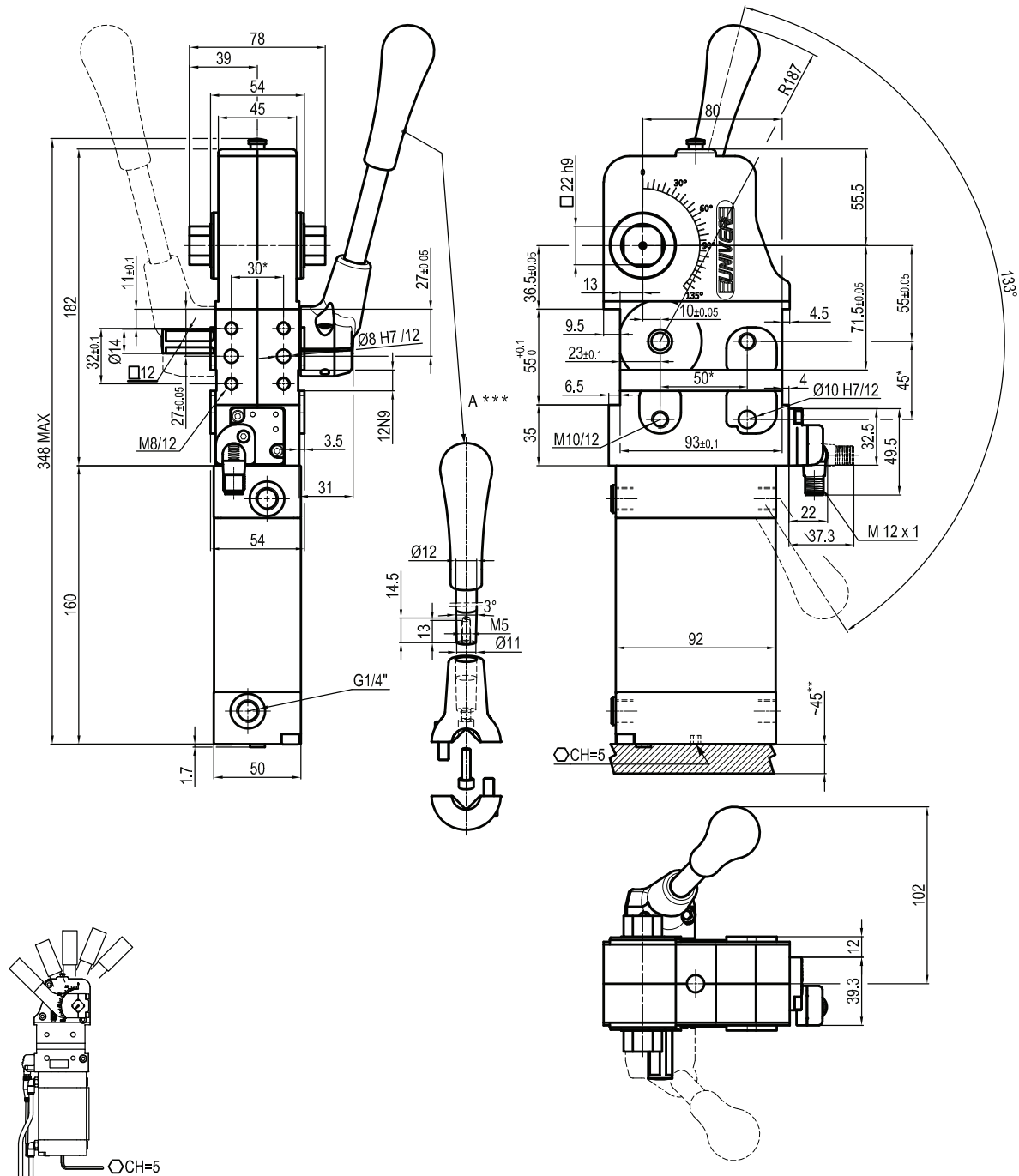


U	B	Q	6	3	N	N	K	
1	2	3	4	5	6	7		

1 Series	2 Version	3 Size
UB = UNIVERSAL Power clamps fully adjustable opening angle: 0° to 135° Max The opening angle range may vary according to the arm position and style	Q = Pneumatic with manual lever	63 = Ø 63 mm

4 Arm position	5 Arm style	6 Sensor
V = 90° O = 180° N = No arm 	C = Central, 15 mm offset D = Right, 15 mm offset S = Left, 15 mm offset E = Central, 45 mm offset F = Right, 45 mm offset L = Left, 45 mm offset X* = Central, oversized dowel holes Ø 8 H7, 15 mm offset Y* = Right, oversized dowel holes Ø 8 H7, 15 mm offset Z* = Left, oversized dowel holes Ø 8 H7, 15 mm offset T* = Central, oversized dowel holes Ø 8 H7, 45 mm offset U* = Right, oversized dowel holes Ø 8 H7, 45 mm offset V* = Left, oversized dowel holes Ø 8 H7, 45 mm offset N = No arm * = Available upon request	N = No sensor (with protection plate) K = Electronic sensor PNP (optical) (DF-K) D = Pneumatic sensor

7 Arm material
S = Steel If not specified the aluminium version is supplied

UBQ63NNK


Bore Ø	Holding moment	Clamping moment (0,5 MPa)	Weight (clamping arm not included)
63 mm	1750 Nm	420 Nm	3,2 Kg

 Min./Max. operating pressure: **0,4 / 0,6 MPa**

 Operating temperature: **5° ÷ 45° C**

 Opening angle: **adjustable**

Without arm

With manual lever

Electronic sensor with M12 swivel connector, from 0° to 90°

Supply voltage: 10 ÷ 30 Vdc

 IP code: **IP 65**

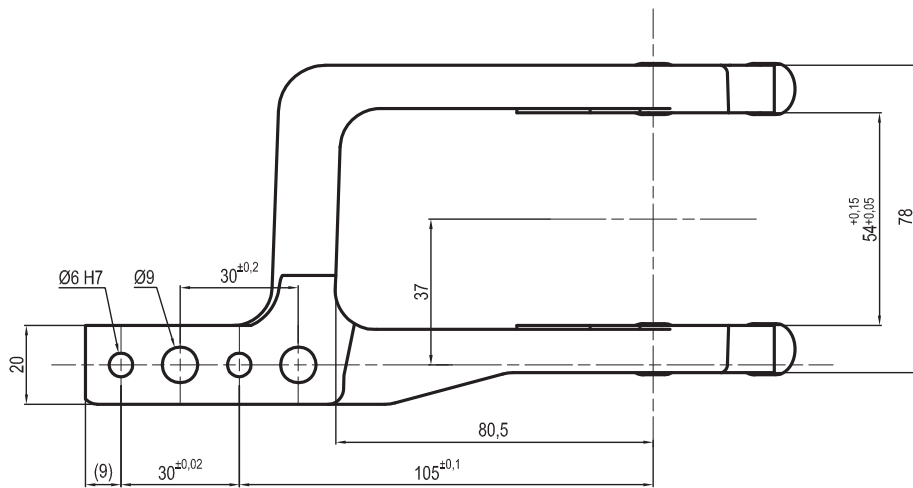
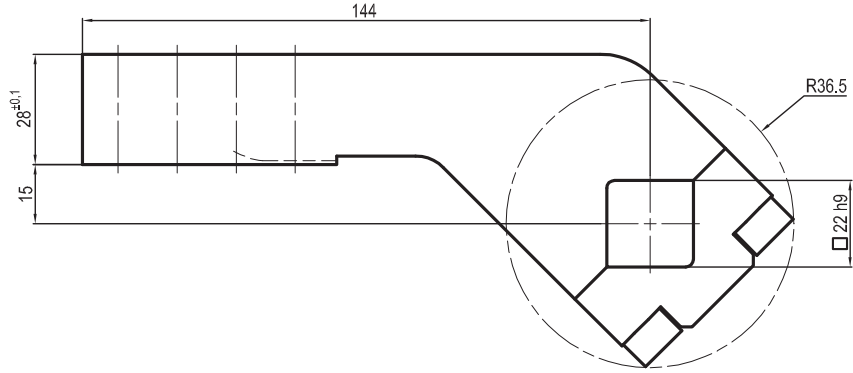
Pneumatic ports on both sides

*: TOLERANCE BETWEEN DOWELS ± 0,02, BETWEEN SCREW HOLES ± 0,1

**: TOLERANCE AT 80 mm FROM PIVOT POINT

UP310151443A

□ 22 mm - offset 15 mm



Clamp size	Material	Weight
63 mm	Aluminium	0,3 Kg

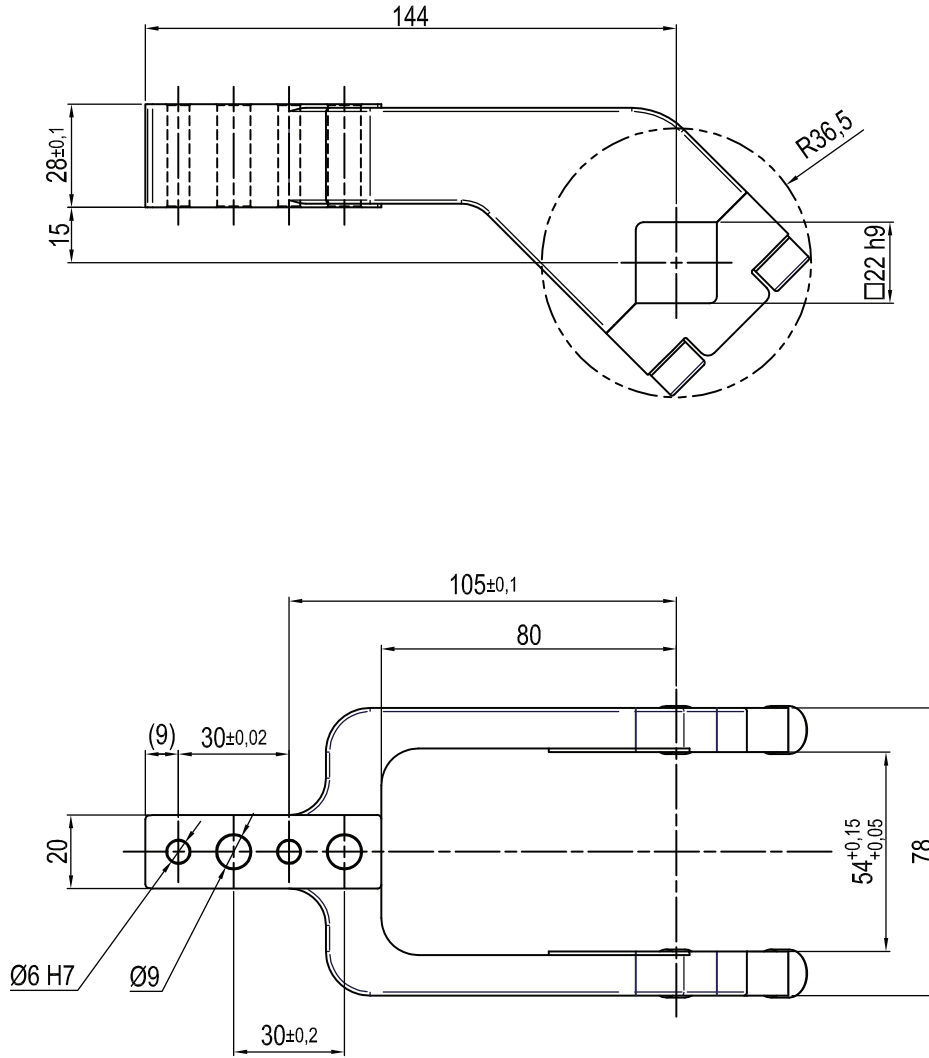
THE CLAMPING ARM INCLUDES THE NECESSARY SCREWS

Subject to technical modifications without notice

Rev. 03 15.07.16

UP310151441S

□ 22 mm - offset 15 mm



Clamp size	Material	Weight
63 mm	Steel	1,2 Kg

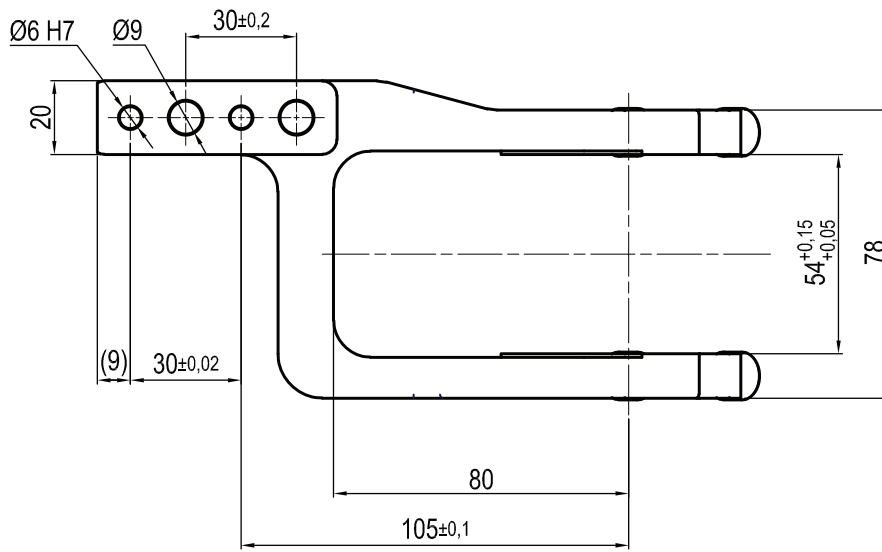
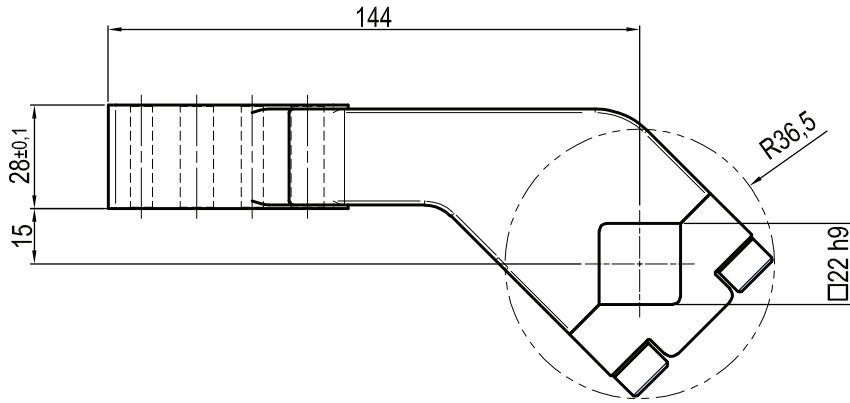
THE CLAMPING ARM INCLUDES THE NECESSARY SCREWS

Subject to technical modifications without notice

Rev. 00 26.08.20

UP310151442S

□ 22 mm - offset 15 mm



Clamp size	Material	Weight
63 mm	Steel	1,2 Kg

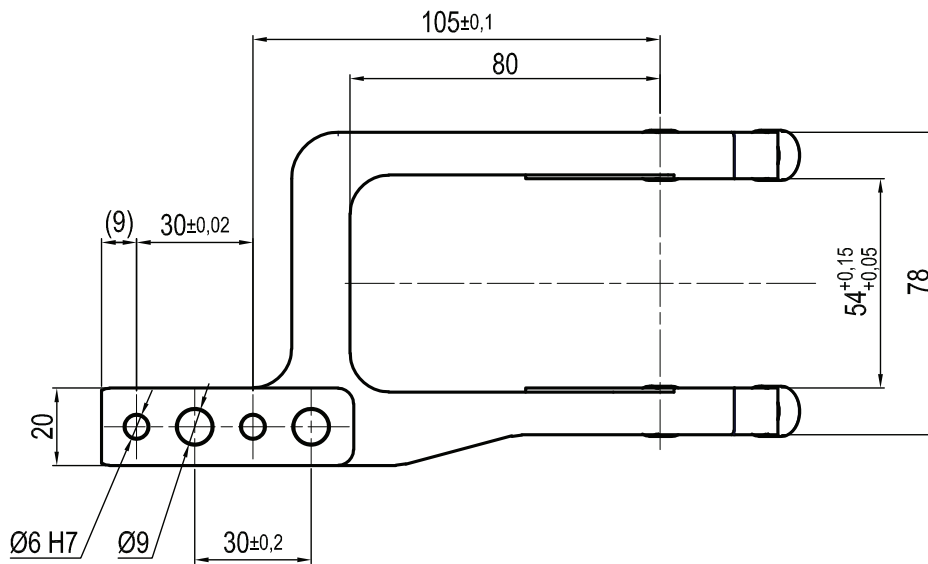
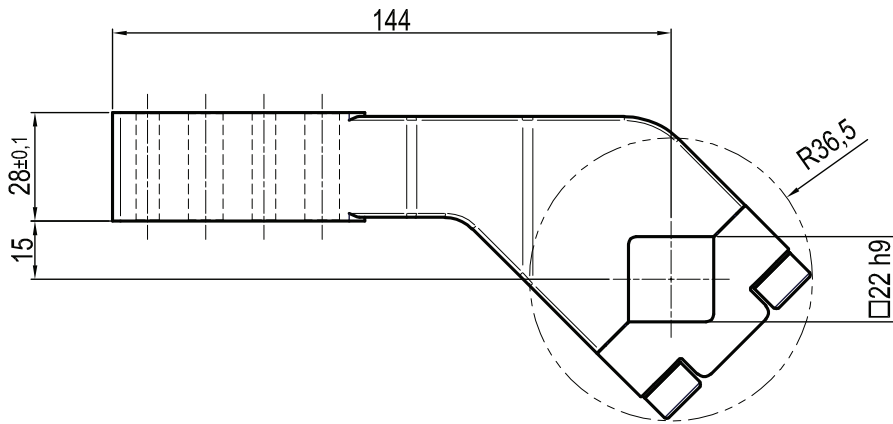
THE CLAMPING ARM INCLUDES THE NECESSARY SCREWS

Subject to technical modifications without notice

Rev. 00 26.08.20

UP310151443S

□ 22 mm - offset 15 mm



Clamp size	Material	Weight
63 mm	Steel	1,2 Kg

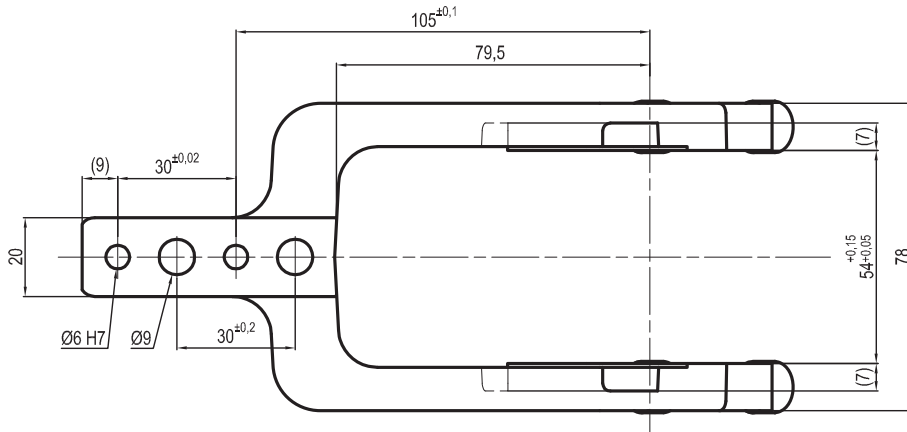
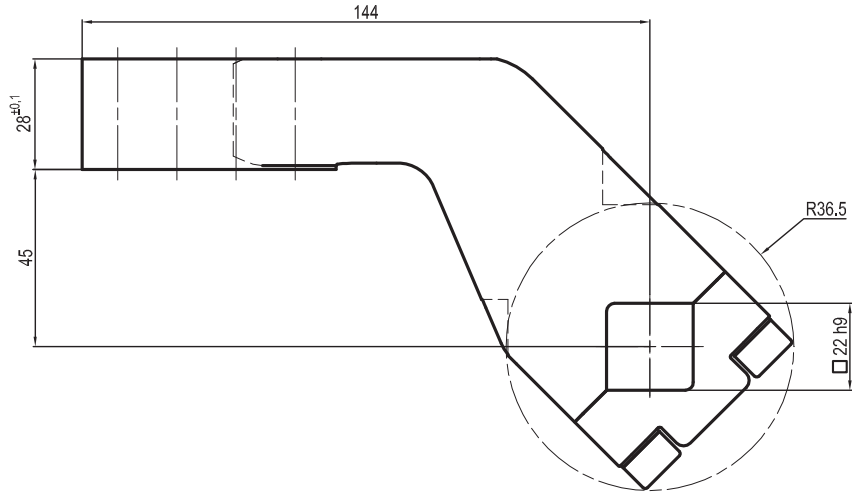
THE CLAMPING ARM INCLUDES THE NECESSARY SCREWS

Subject to technical modifications without notice

Rev. 00 25.08.20

UP310451441A

□ 22 mm - offset 45 mm



Clamp size	Material	Weight
63 mm	Aluminium	0,3 Kg

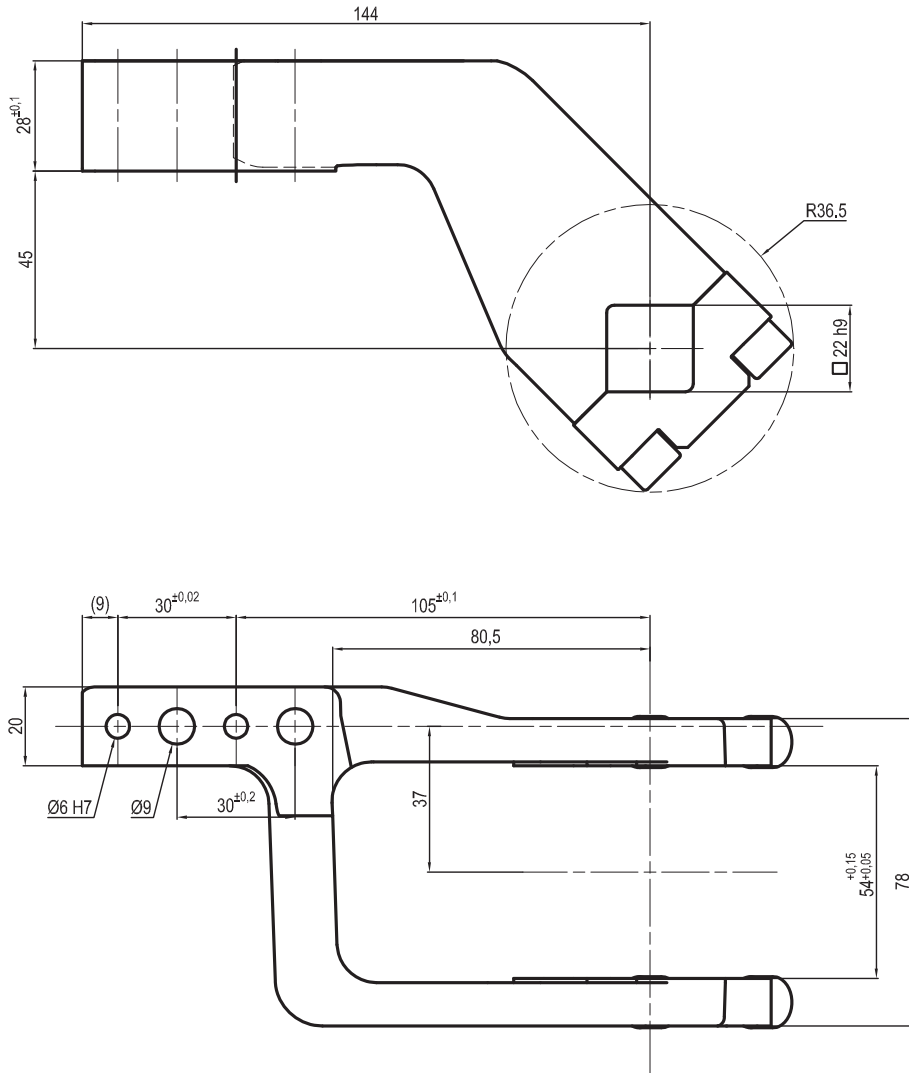
THE CLAMPING ARM INCLUDES THE NECESSARY SCREWS

Subject to technical modifications without notice

Rev. 03 15.07.16

UP310451442A

□ 22 mm - offset 45 mm



Clamp size	Material	Weight
63 mm	Aluminium	0,3 Kg

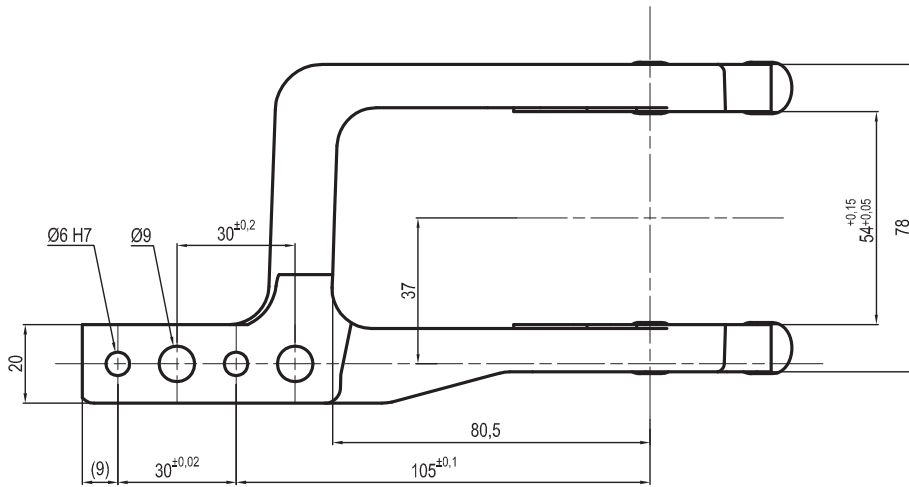
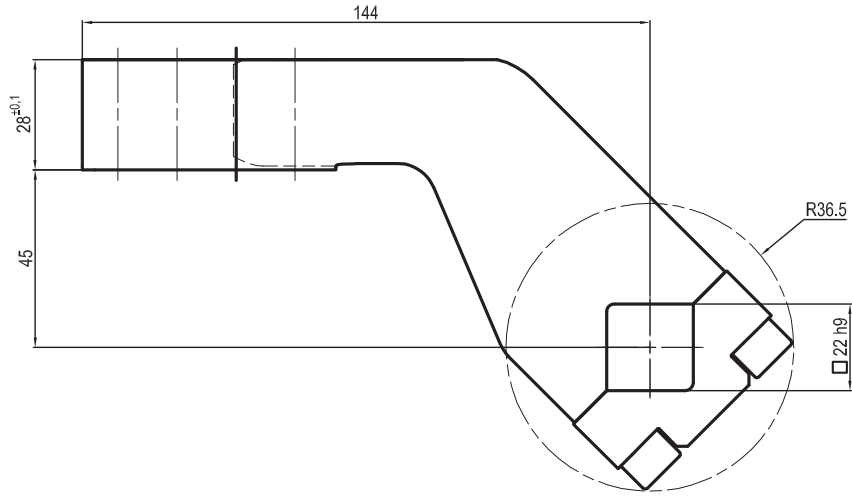
THE CLAMPING ARM INCLUDES THE NECESSARY SCREWS

Subject to technical modifications without notice

Rev. 03 15.07.16

UP310451443A

□ 22 mm - offset 45 mm



Clamp size	Material	Weight
63 mm	Aluminium	0,3 Kg

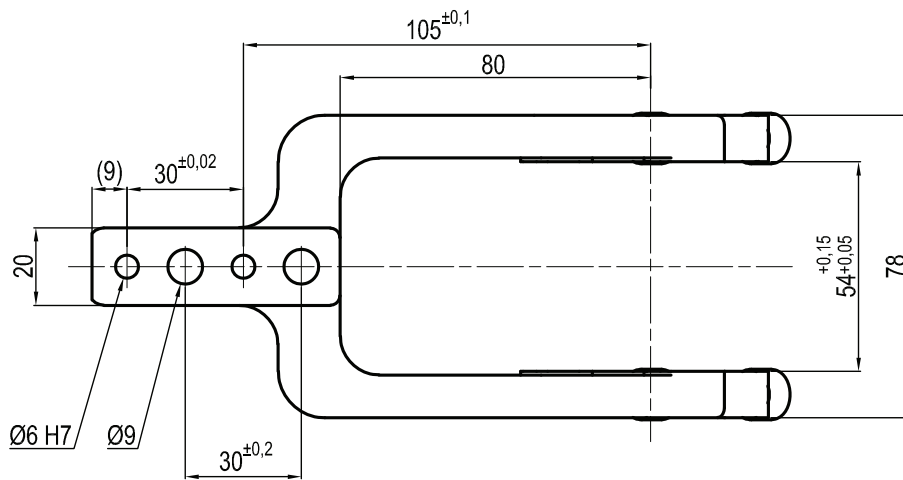
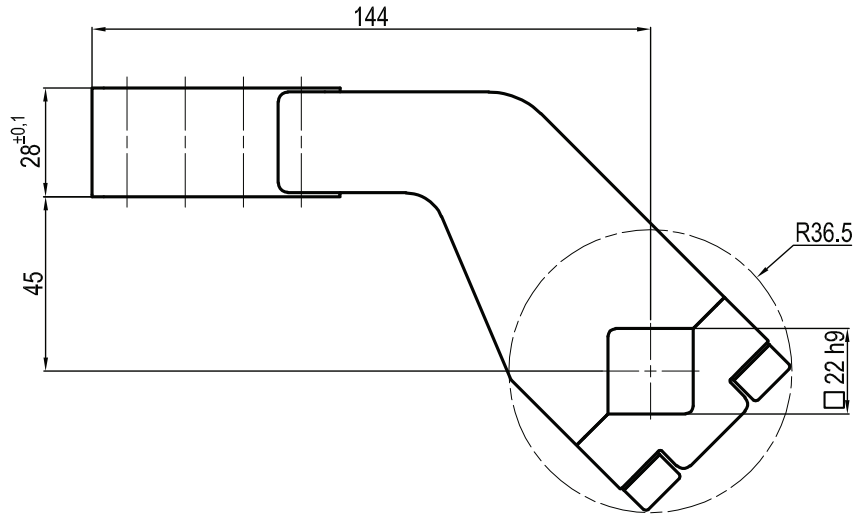
THE CLAMPING ARM INCLUDES THE NECESSARY SCREWS

Subject to technical modifications without notice

Rev. 03 18.07.16

UP310451441S

□ 22 mm - offset 45 mm



Clamp size	Material	Weight
63 mm	Steel	1,4 Kg

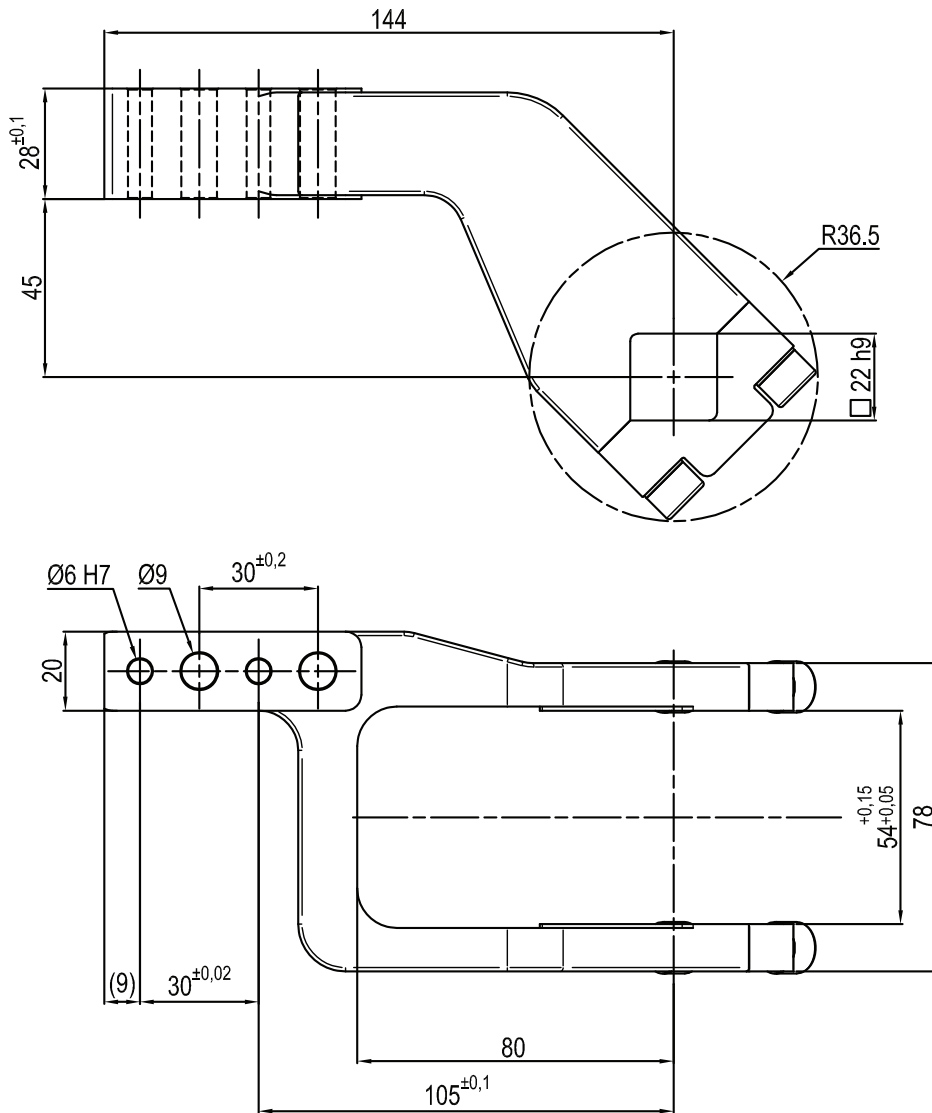
THE CLAMPING ARM INCLUDES THE NECESSARY SCREWS

Subject to technical modifications without notice

Rev. 00 25.08.20

UP310451442S

□ 22 mm - offset 45 mm



Clamp size	Material	Weight
63 mm	Steel	1,4 Kg

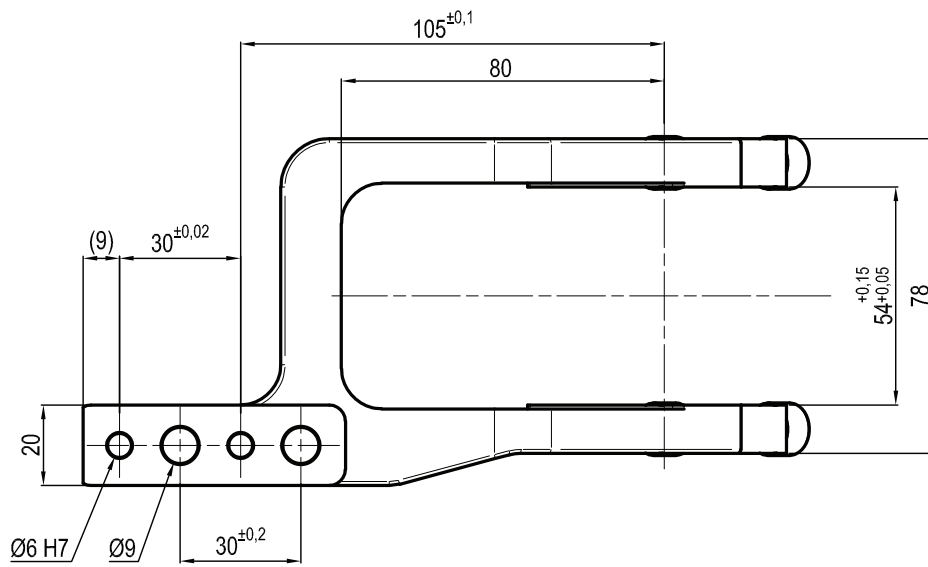
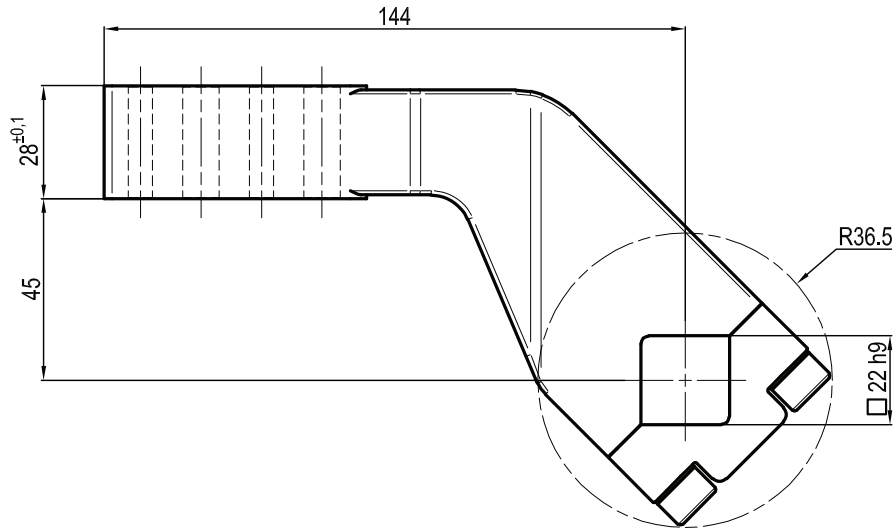
THE CLAMPING ARM INCLUDES THE NECESSARY SCREWS

Subject to technical modifications without notice

Rev. 00 26.08.20

UP310451443S

□ 22 mm - offset 45 mm



Clamp size	Material	Weight
63 mm	Steel	1,4 Kg

THE CLAMPING ARM INCLUDES THE NECESSARY SCREWS

Subject to technical modifications without notice

Rev. 00 26.08.20