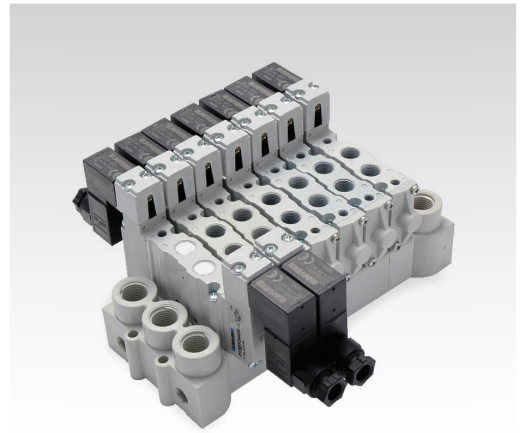


## CHARACTERISTICS

Ambient temperature	-5 ÷ 50 °C
Fluid	10 µm filtered air, with or without lubrication
Commutation system	spool
Max pressure	9 bar
Connections	G1/8
Nominal flow rate (NI/min)	800 (5/2) 720 (5/3) 720 (3/2+3/2)
Valve body	zamak
Seals	NBR
Spool	aluminium
Electropilot	A series (15 mm)
Coil	U05 series
Voltage	12 V DC - 24 V DC - 24 V AC - 48 V AC - 110 V AC - 230 V AC
Power consumption	2 W (DC) 2,3 VA (AC)
Protection degree	IP65
Manual override	impulse screw - 1-2 positions



## CODIFICATION KEY

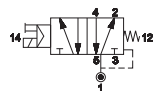
P	1	5	E	F	2	5	5	2	4	
	1	2	3	4	5	6				

<b>1 Series</b> <b>P15EF</b> = COMPACT Valves - Threaded body G1/8 A series electropilot (15 mm)	<b>2 Type</b> 2 = 5/2 3 = 5/3 c.c. 4 = 5/3 o.c. 5 = 5/3 p.c.	<b>3 Control 14</b> 5 = Electrical amplified 15 mm
<b>4 Return 12</b> 0 = Pneumomechanical spring 1 = Mechanical spring 5 = Electrical amplified 15 mm	<b>5 Voltage</b> 12 = 12 V DC    48 = 48 V AC 24 = 24 V DC    11 = 110 V AC 34 = 24 V AC    23 = 230 V AC	<b>6 Option</b> C = 2-position manual override (upon request) D = External pilot supply

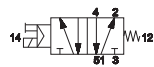
c.c. = closed centres    o.c. = open centres    p.c. = pressurized centres

## Electrical impulse - Threaded connection G1/8

### Single impulse

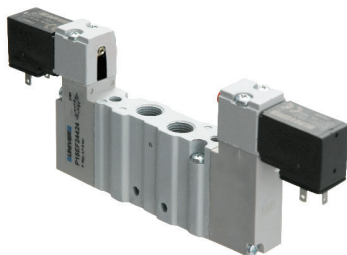


P15EF250\*\*

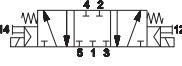


P15EF251\*\*

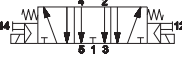
### Double impulse



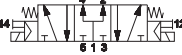
P15EF255\*\*



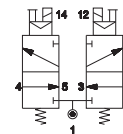
P15EF355\*\*



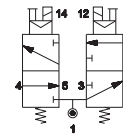
P15EF455\*\*



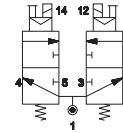
P15EF555\*\*



P15EF655\*\*



P15EF755\*\*



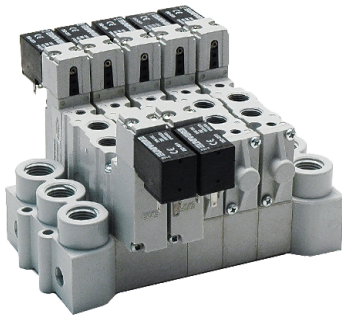
P15EF855\*\*

\*\* = Voltage 12 V DC - 24 V DC - 24 V AC - 48 V AC - 110 V AC - 230 V AC (Example: P15EF25024)

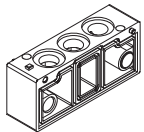
Solenoid valves are supplied with coils, without connectors

Electrical connection with external connector

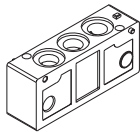
3



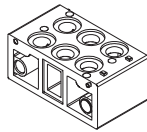
**P15SF300**      **P15SF310**      **P15SF400**      **P15SF410**      **P15SF515**      **P15SF550**      **P15SF560**



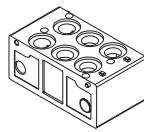
sub-base 1 place



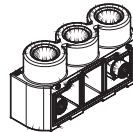
sub-base 1 place  
1-3-5 closed



sub-base 2 places



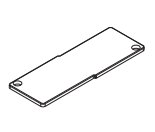
sub-base 2 places  
1-3-5 closed



right/left supply plate  
G1/4

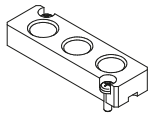


pressure separator



closing plate for  
unused valve place

**P15SF570**      **P15STR01**      **P15STR02**      **P15STR05**



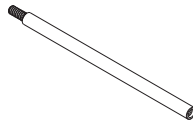
intermediate supply plate  
for threaded version



modular tie-rods  
1 valve place



modular tie-rods  
2 valve places



modular tie-rods  
5 valve places

**AZ4-SN004A**

No. 100 nuts M4 for tie-rods

**AZ4-VN0414**

No. 100 screws M4x14 for tie-rods

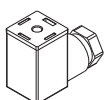
Pre-assembled sub-base



Part No.	Positions
P15SF499-02	2
P15SF499-03	3
P15SF499-04	4
P15SF499-05	5
P15SF499-06	6
P15SF499-07	7
P15SF499-08	8
P15SF499-09	9
P15SF499-10	10

Pre-assembled sub-bases include seals and screws for valve assembly

Electrical connections



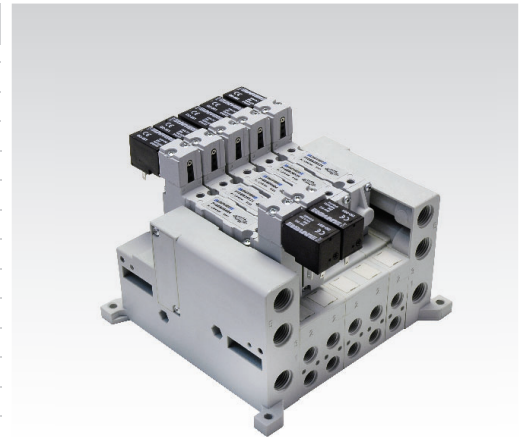
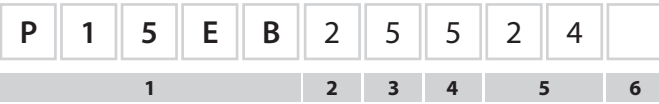
**AM-5109**

15 mm connector

3

**CHARACTERISTICS**

Ambient temperature	-5 ÷ 50 °C		
Fluid	10 µm filtered air, with or without lubrication		
Commutation system	spool		
Max pressure	9 bar		
Connections	G1/8		
Nominal flow rate (NI/min)	800 (5/2)	720 (5/3)	720 (3/2+3/2)
Valve body	zamak		
Seals	NBR		
Spool	aluminium		
Electropilot	A series (15 mm)		
Coil	U05 series		
Voltage	12 V DC - 24 V DC - 24 V AC - 48 V AC - 110 V AC - 230 V AC		
Power consumption	2 W (DC) 2,3 VA (AC)		
Protection degree	IP65		
Manual override	impulse screw - 1-2 positions		


**CODIFICATION KEY**


<b>1 Series</b> <b>P15EB</b> = COMPACT Valves for sub-base mounting A series electropilot (15 mm)	<b>2 Type</b> 2 = 5/2      6 = 3/2+3/2 NC-NC 3 = 5/3 c.c.      7 = 3/2+3/2 NC-NO 4 = 5/3 o.c.      8 = 3/2+3/2 NO-NO 5 = 5/3 p.c.	<b>3 Control 14</b> 5 = Electrical amplified 15 mm
<b>4 Return 12</b> 0 = Pneumomechanical spring 1 = Mechanical spring 5 = Electrical amplified 15 mm	<b>5 Voltage</b> 12 = 12 V DC      48 = 48 V AC 24 = 24 V DC      11 = 110 V AC 34 = 24 V AC      23 = 230 V AC	<b>6 Variant</b> C = 2-position manual override (upon request) D = External pilot supply

c.c. = closed centres    o.c. = open centres    p.c. = pressurized centres

**Electrical impulse - Body for sub-base mounting - 15 mm connector**

■ Single impulse

P15EB250\*\*

P15EB251\*\*

■ Double impulse

P15EB255\*\*

P15EB355\*\*

P15EB455\*\*

P15EB555\*\*

P15EB655\*\*

P15EB755\*\*

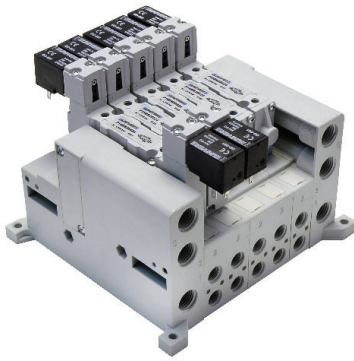
P15EB855\*\*

\*\* = Voltage 12 V DC - 24 V DC - 24 V AC - 48 V AC - 110 V AC - 230 V AC (Example: P15EB25024)

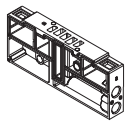
Solenoid valves are supplied with coils, without connectors

Electrical connection with external connector

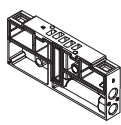
3



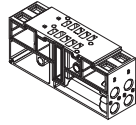
**P15SB100    P15SB110    P15SB200    P15SB210    P15SB300    P15SB310    P15SB400**



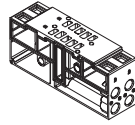
sub-base 1 place side outlets G1/8



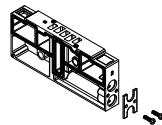
sub-base 1 place side outlets G1/8 1-3-5 closed



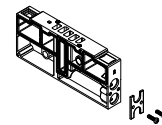
sub-base 2 places side outlets G1/8



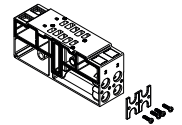
sub-base 2 places side outlets G1/8 1-3-5 closed



sub-base 1 place side outlets for GZR push-in fittings

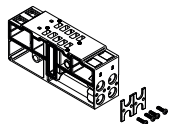


sub-base 1 place side outlets for GZR push-in fittings 1-3-5 closed

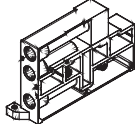


sub-base 2 places side outlets for GZR push-in fittings

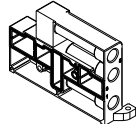
**P15SB410    P15SB502    P15SB505    P15SB550    P15SB560    P15SB570**



sub-base 2 places side outlets for GZR push-in fittings 1-3-5 closed



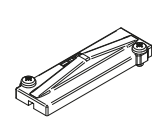
left supply plate G1/4



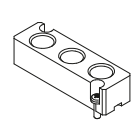
right supply plate G1/4



pressure separator



closing plate for unused valve place



intermediate supply plate for sub-base

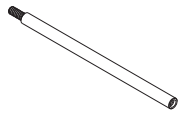
**P15STR01    P15STR02    P15STR05    GZR-V10004/06/08**



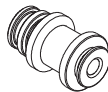
modular tie-rods 1 valve place



modular tie-rods 2 valve places



modular tie-rods 5 valve places



straight fitting  
GZR-V10004 = tube Ø4 mm  
GZR-V10006 = tube Ø6 mm  
GZR-V10008 = tube Ø8 mm

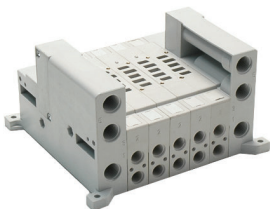
**AZ4-SN004A**

No. 100 nuts M4 for tie-rods

**AZ4-VN0414**

No. 100 screws M4x14 for tie-rods

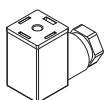
Pre-assembled sub-base



Part No.	Positions
P15SB499-02	2
P15SB499-03	3
P15SB499-04	4
P15SB499-05	5
P15SB499-06	6
P15SB499-07	7
P15SB499-08	8
P15SB499-09	9
P15SB499-10	10

Pre-assembled sub-bases include seals and screws for valve assembly

Electrical connections



AM-5109

15 mm connector

3