

# LCT50

Pneumatic retractable locating pin unit,  
toggle-joint mechanism,  
double orientable rod



L	C	T	5	0	0	4	0	A	G	R
1	2	3	4		5	6	7			

<b>1 Series</b>	<b>2 Version</b>	<b>3 Size</b>
-----------------	------------------	---------------

**LC** = Retractable locating pin unit

**T** = Pneumatic, toggle-joint mechanism,  
double orientable rod

**50** = Ø 50 mm

<b>4 Strokes</b>	<b>5 Sensor</b>	<b>6 Rod end style</b>
------------------	-----------------	------------------------

**040** = 40 mm

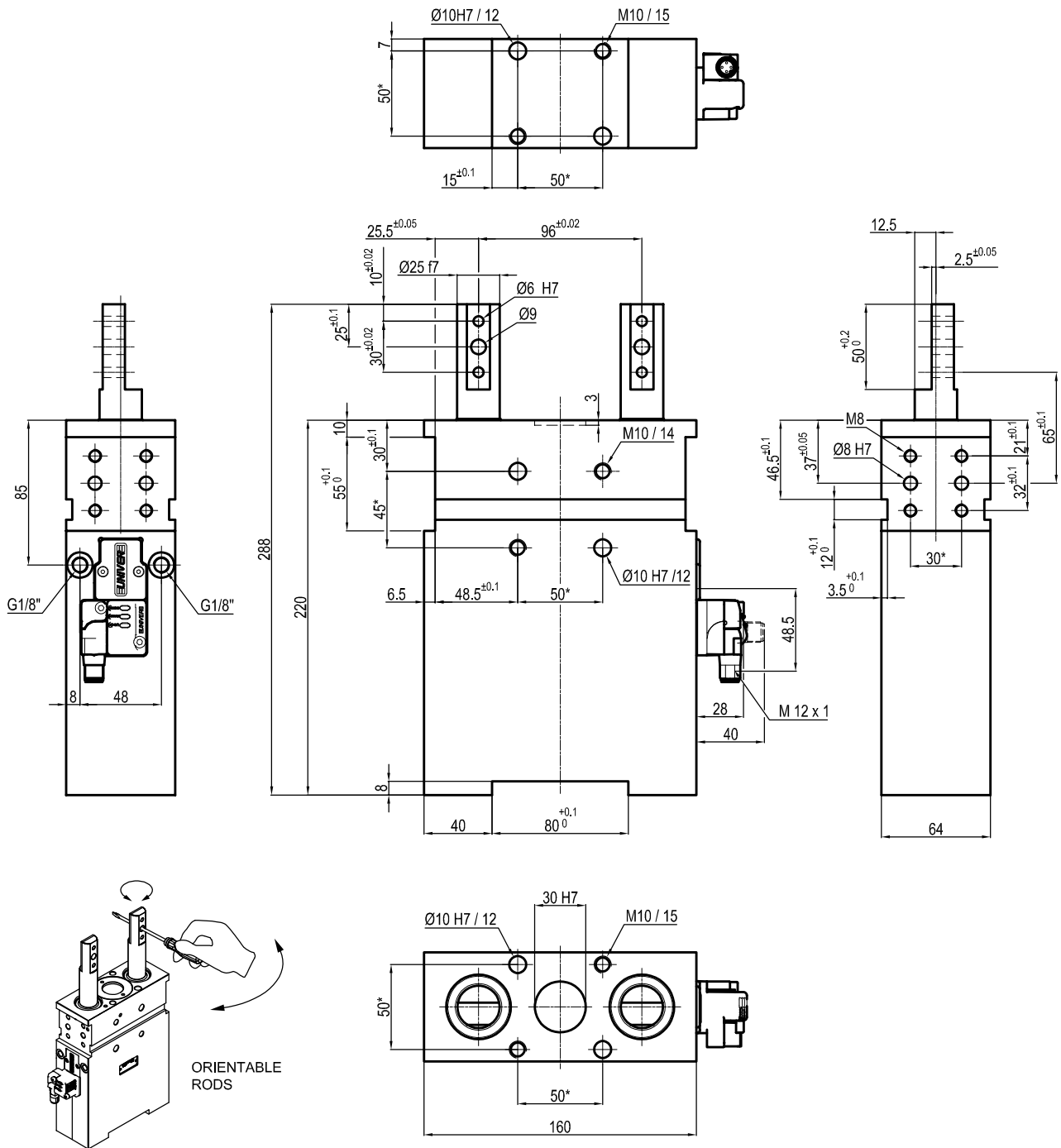
**N** = No sensor (with protection plate)  
**A** = Electronic sensor with M12  
swivel connector (DF-U)

**A** = Rod for off-set pins  
**G** = Rod for off-set pins  
(rod plane matching body  
middle axis)

<b>7 Option</b>
-----------------

**R** = Metallic rod scraper

## UNIVERSAL Retractable locating pin unit with toggle mechanism and two rods



Bore Ø	Min. Pull force at 0.5 MPa	** Max. Push force at 0.5 MPa	Max. torque 20 Nm	Max. deflection moment 20 Nm	Weight
50 mm	500 N	7150 N	0.1 mm	0.07 mm	7.3 Kg

X = 100 mm

\* : TOLERANCE BETWEEN DOWEL HOLES ± 0.02, BETWEEN SCREW HOLES ± 0.1

\*\* : MAX PUSH FORCE AT STROKE END POSITION

Subject to technical modification without notice.

Min./max. operating pressure: 0,4 / 0,6 MPa

Operating temperature: 5° + 45° C

Strokes in mm.: 40 mm

Electronic 24 Vdc sensor with M12 swivel connector that can be orientated at 0° or 90°

Supply voltage: 10+30 Vdc

IP code: IP 65

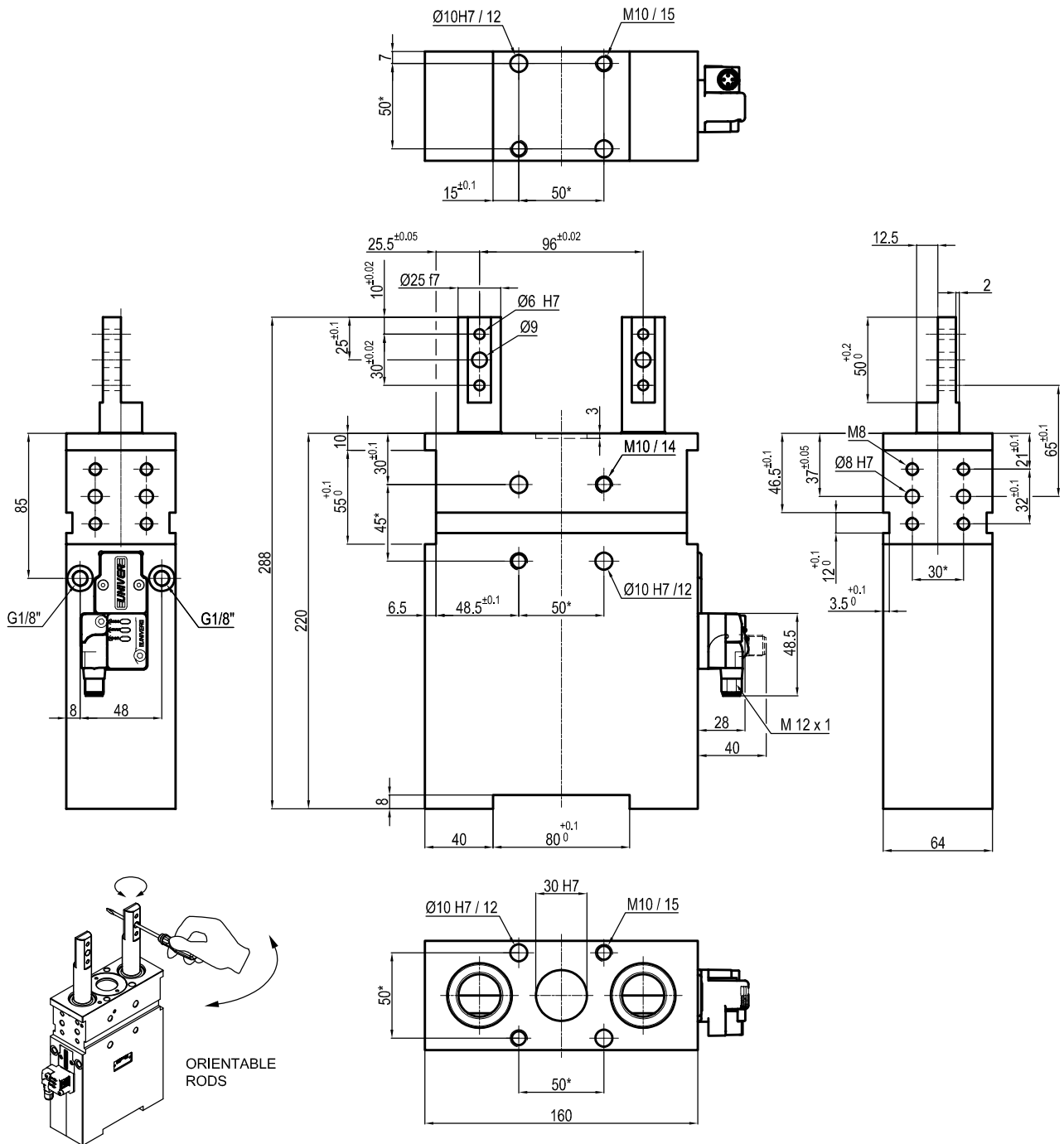
Pneumatic ports on both sides

Max. side load: 400 N

Max. deflection: 0,1 mm, whit 40 mm stroke at max load

Max. offset: 200 mm from middle point

## UNIVERSAL Retractable locating pin unit with toggle mechanism and two rods



Bore Ø	Min. Pull force at 0.5 MPa	** Max. Push force at 0.5 MPa	Max. torque 20 Nm	Max. deflection moment 20 Nm	Weight
50 mm	500 N	7150 N	0.1 mm	0.07 mm	7.3 Kg
X = 100 mm					

\*: TOLERANCE BETWEEN DOWEL HOLES  $\pm 0.02$ , BETWEEN SCREW HOLES  $\pm 0.1$

\*\* : MAX PUSH FORCE AT STROKE END POSITION

Subject to technical modification without notice.

Min./max. operating pressure: 0,4 / 0,6 MPa

Operating temperature: 5° + 45° C

Strokes in mm.: 40 mm

Electronic 24 Vdc sensor with M12 swivel connector that can be orientated at 0° or 90°

Supply voltage: 10÷30 Vdc

IP code: IP 65

Pneumatic ports on both sides

Max. side load: 400 N

Max. deflection: 0,1 mm, whit 40 mm stroke at max load

Max. offset: 200 mm from middle point

# LCT50

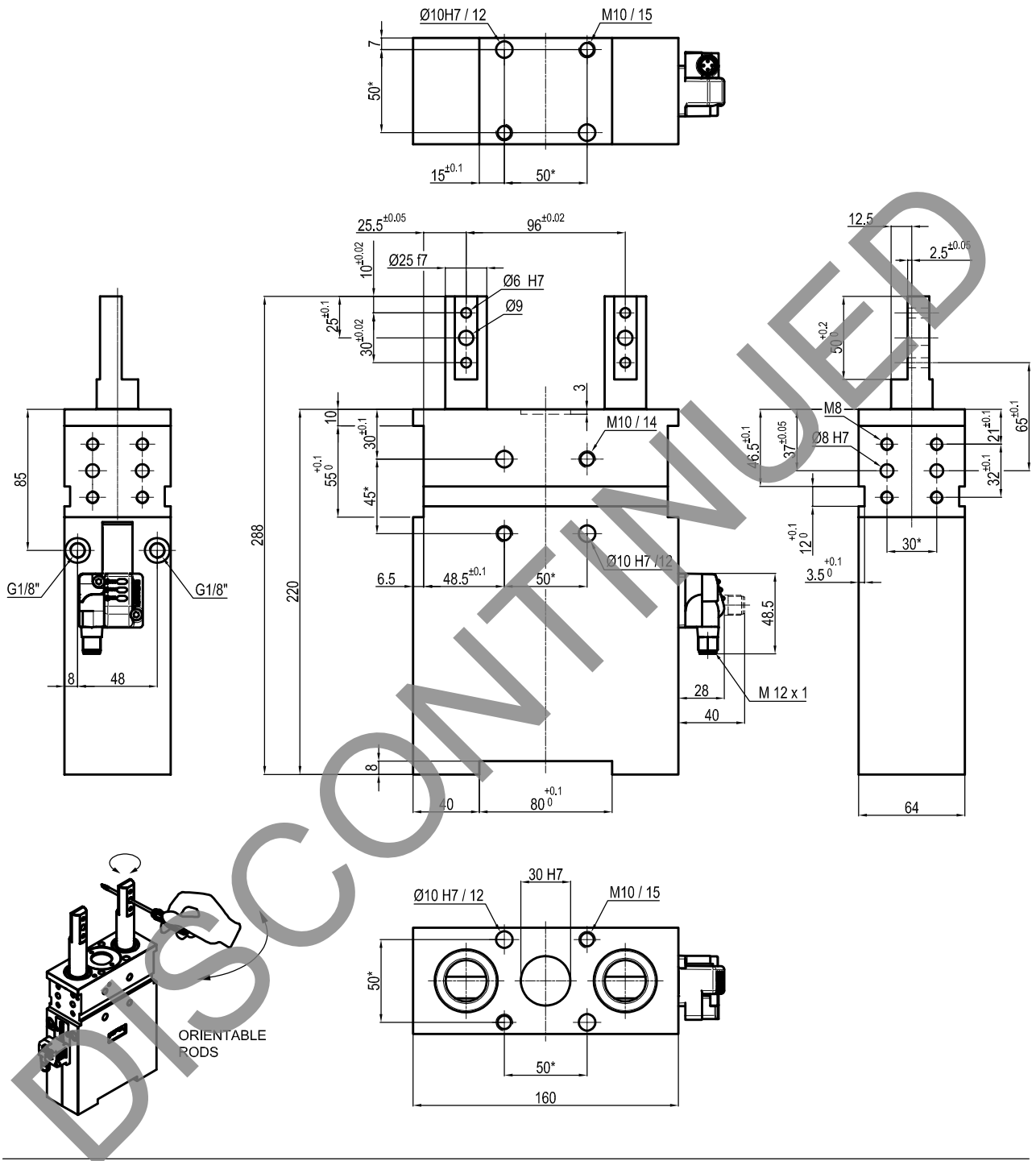
Irreversible pneumatic retractable locating pin unit, double orientable rod



L	C	T	5	0	0	4	0	E	A	R
1	2	3	4		5	6	7			

<b>1 Series</b> LC = Retractable locating pin unit	<b>2 Version</b> T = Pneumatic irreversible, double orientable rod	<b>3 Size</b> 50 = Ø 50 mm
<b>4 Strokes</b> 040 = 40 mm	<b>5 Sensor</b> E = Electronic sensor with M12 swivel connector N = No sensor (with protection plate)	<b>6 Rod end style</b> A = Rod for off-set pins G = Rod for off-set pins (rod plane matching body middle axis)
<b>7 Rod scraper</b> R = Metallic rod scraper		

## UNIVERSAL Retractable locating pin unit with toggle mechanism and two rods



Min./max. operating pressure: 0,4 / 0,6 MPa  
 Operating temperature: 5° + 45° C  
 Strokes in mm.: 40 mm

Bore Ø	Pull force at 0,5 MPa	Push force at 0,5 MPa	Weight
50 mm	6500 N	7150 N	7.2 Kg

Electronic 24 Vdc sensor with M12 swivel connector that can be orientated at 0° or 90°  
 Supply voltage: 10+30 Vdc

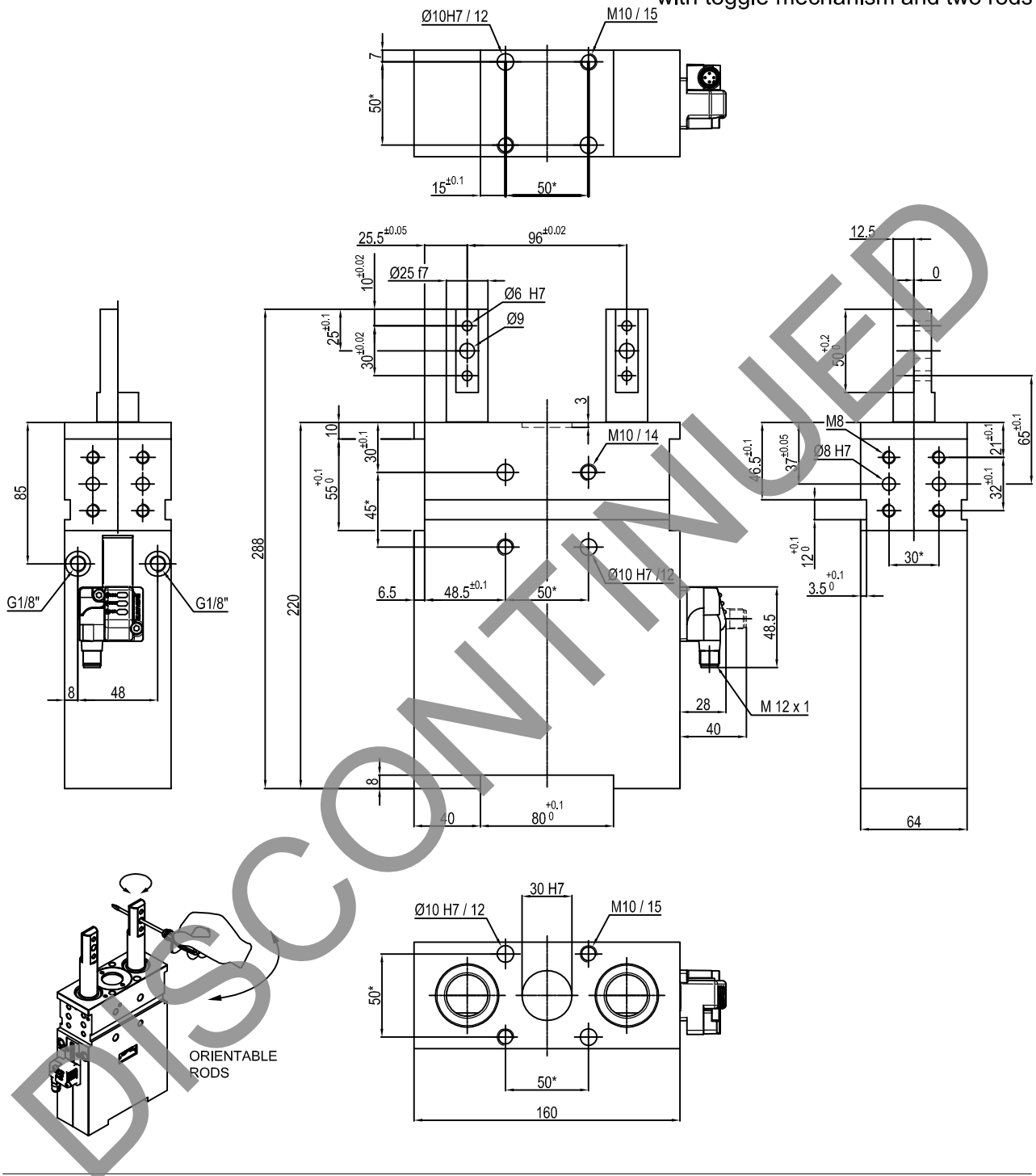
IP code: IP 65  
 Pneumatic ports on both sides

\* : TOLERANCE BETWEEN DOWEL HOLES ± 0.02, TO SCREW HOLES ± 0.1

Max. side load: 400 N  
 Max. deflection: 0,1 mm, whit 40 mm stroke at max load  
 Max. offset: 200 mm from middle point

Subject to technical modification without notice.

## UNIVERSAL Retractable locating pin unit with toggle mechanism and two rods



Min./max. operating pressure: 0,4 / 0,6 MPa  
 Operating temperature: 5° + 45° C  
 Strokes in mm.: 40 mm

Bore Ø	Pull force at 0,5 MPa	Push force at 0,5 MPa	Weight
50 mm	6500 N	7150 N	7.2 Kg

Electronic 24 Vdc sensor with M12 swivel connector that can be orientated at 0° or 90°  
 Supply voltage: 10+30 Vdc

IP code: IP 65  
 Pneumatic ports on both sides

Max. side load: 400 N  
 Max. deflection: 0,1 mm, whit 40 mm stroke at max load  
 Max. offset: 200 mm from middle point

\* : TOLERANCE BETWEEN DOWEL HOLES ± 0.02, TO SCREW HOLES ± 0.1

Subject to technical modification without notice.