

LCC32

Pneumatic compact retractable locating pin unit, with rear sensor, single rod



L	C	C	3	2	0	4	0	E	A	E	R
1	2	3	4		5	6	7	8			

1 Series	2 Version	3 Size
-----------------	------------------	---------------

LC = Retractable locating pin unit

C = Pneumatic-compact, rear sensor, single rod

32 = Ø 32 mm





4 Strokes	5 Sensor	6 Rod end style
------------------	-----------------	------------------------

020 = 20 mm
040 = 40 mm

N = No sensor (with protection plate)
E = Electronic sensor with M12 swivel connector

A = Rod for off-set pins
B = Rod with profiled end
C = Rod with cross-profiled end inner Ø 16 mm
E = Rod with cross-profiled end inner Ø 10 mm

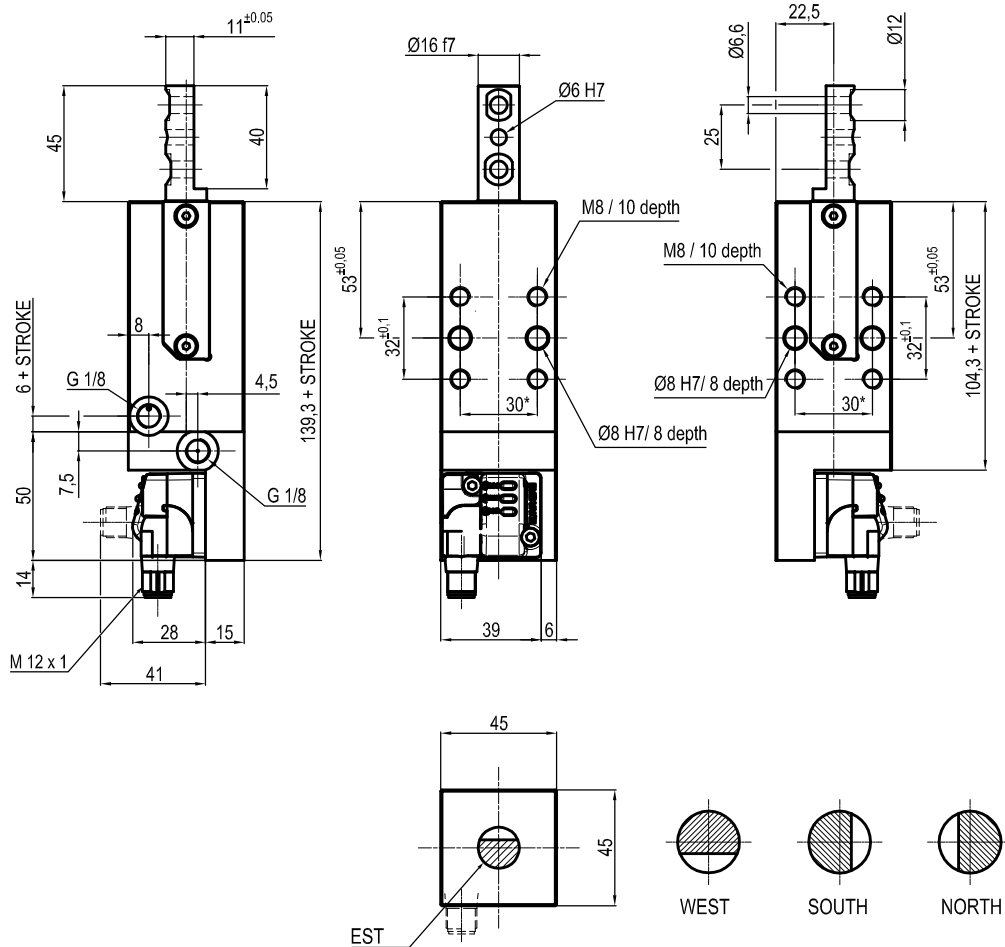
7 Rod orientation	8 Rod scraper
--------------------------	----------------------

- E = East, standard 
- O = West 
- N = North 
- S = South 

R = Metallic rod scraper

Only with A rod end style

UNIVERSAL Pneumatic retractable locating pin unit



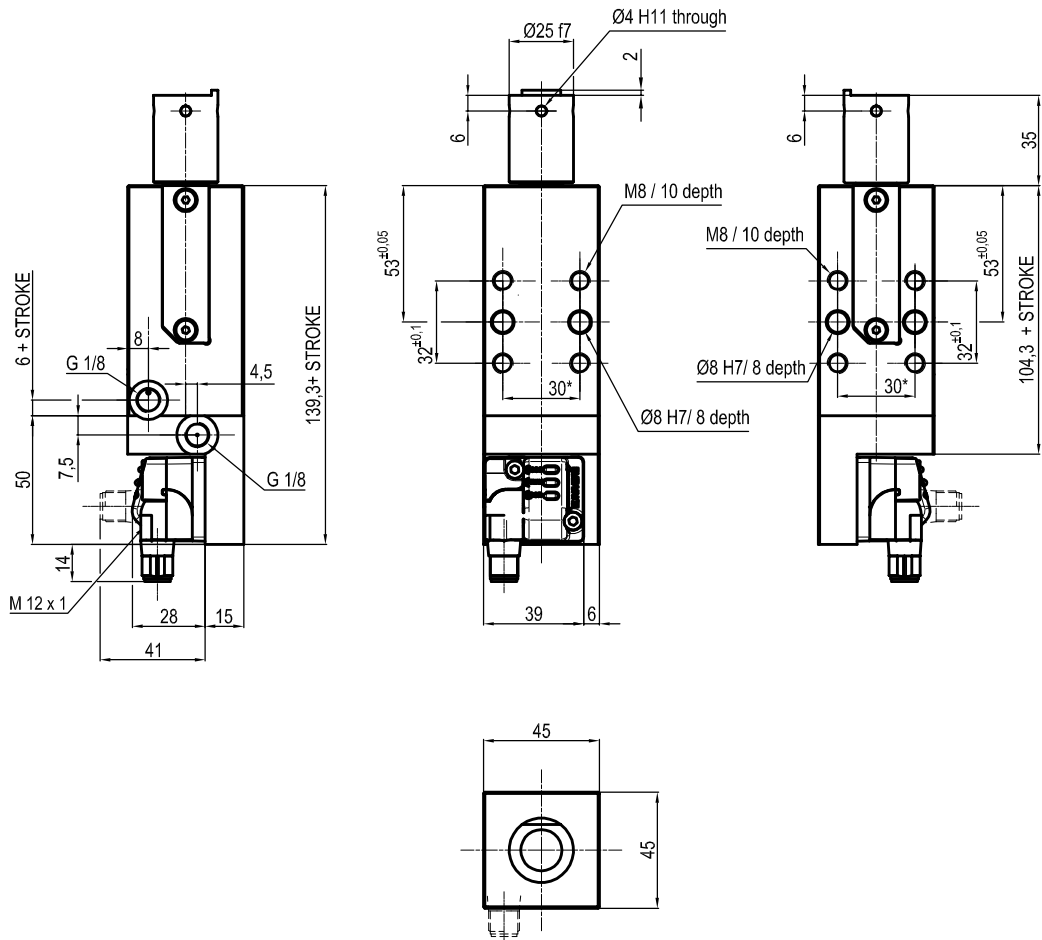
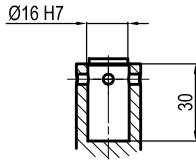
Bore Ø	Max. torque	Max. deflection moment	Weight
32 mm	6 Nm ±0.06°	5.5 Nm ±0.03°	1.0 Kg

Min./max. operating pressure: 0,4 / 0,6 MPa
 Operating temperature: 5° + 45° C
 Strokes in mm.: 20 - 40
 Electronic sensor with M12 swivel connector that can be orientated at 0° or 90°
 Supply voltage: 10+30 Vdc
 IP code: IP 65

* : TOLERANCE BETWEEN DOWEL HOLES ± 0.02, TO SCREW HOLES ± 0.1

Subject to technical modification without notice.

UNIVERSAL Pneumatic retractable locating pin unit



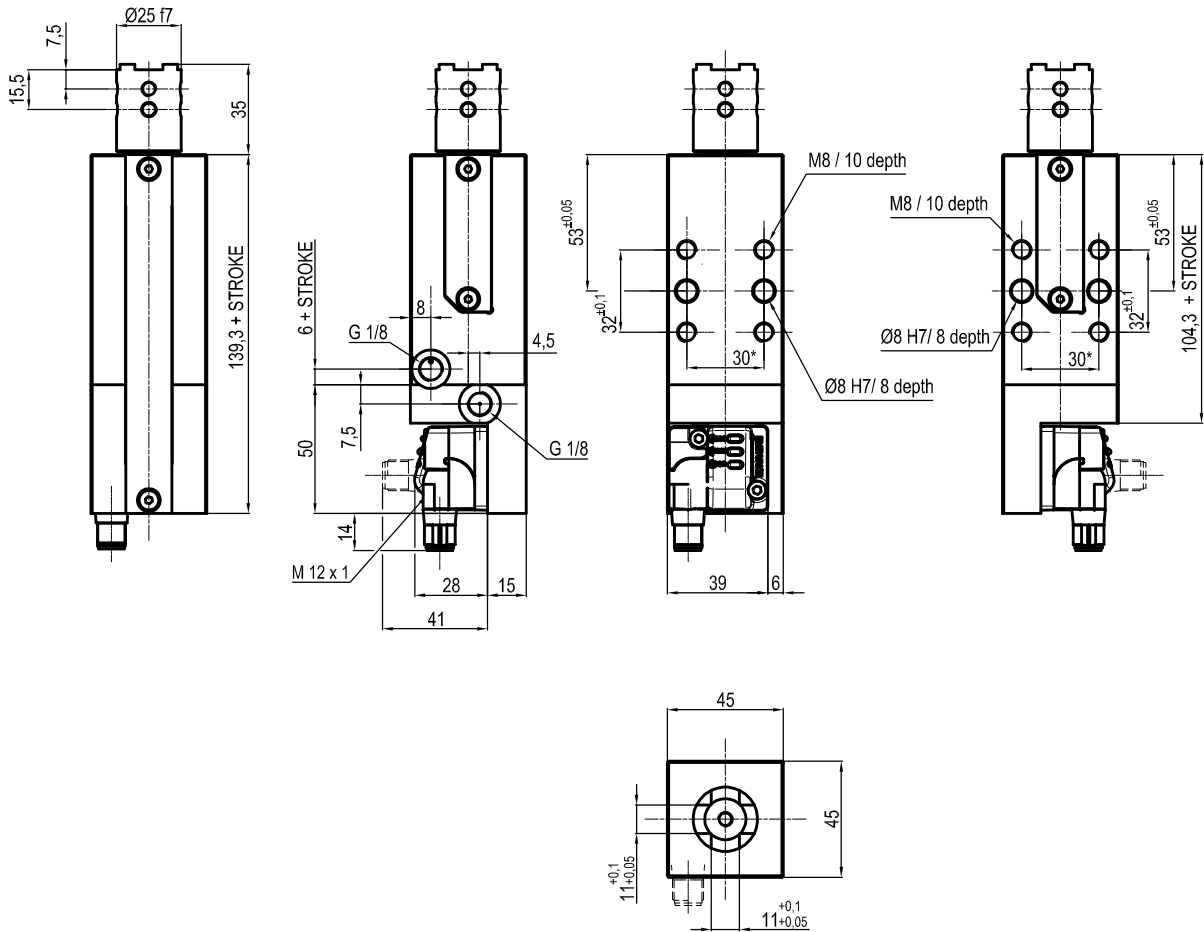
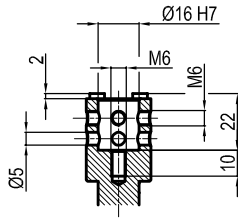
Bore Ø	Max. torque	Max. deflection moment	Weight
32 mm	6 Nm ±0.06°	5.5 Nm ±0.03°	1.0 Kg

Min./max. operating pressure: 0,4 / 0,6 MPa
 Operating temperature: 5° + 45° C
 Strokes in mm.: 20 - 40
 Electronic sensor with M12 swivel connector that can be orientated at 0° or 90°
 Supply voltage: 10+30 Vdc
 IP code: IP 65

* : TOLERANCE BETWEEN DOWEL HOLES ± 0.02, TO SCREW HOLES ± 0.1

Subject to technical modification without notice.

UNIVERSAL Pneumatic retractable locating pin unit



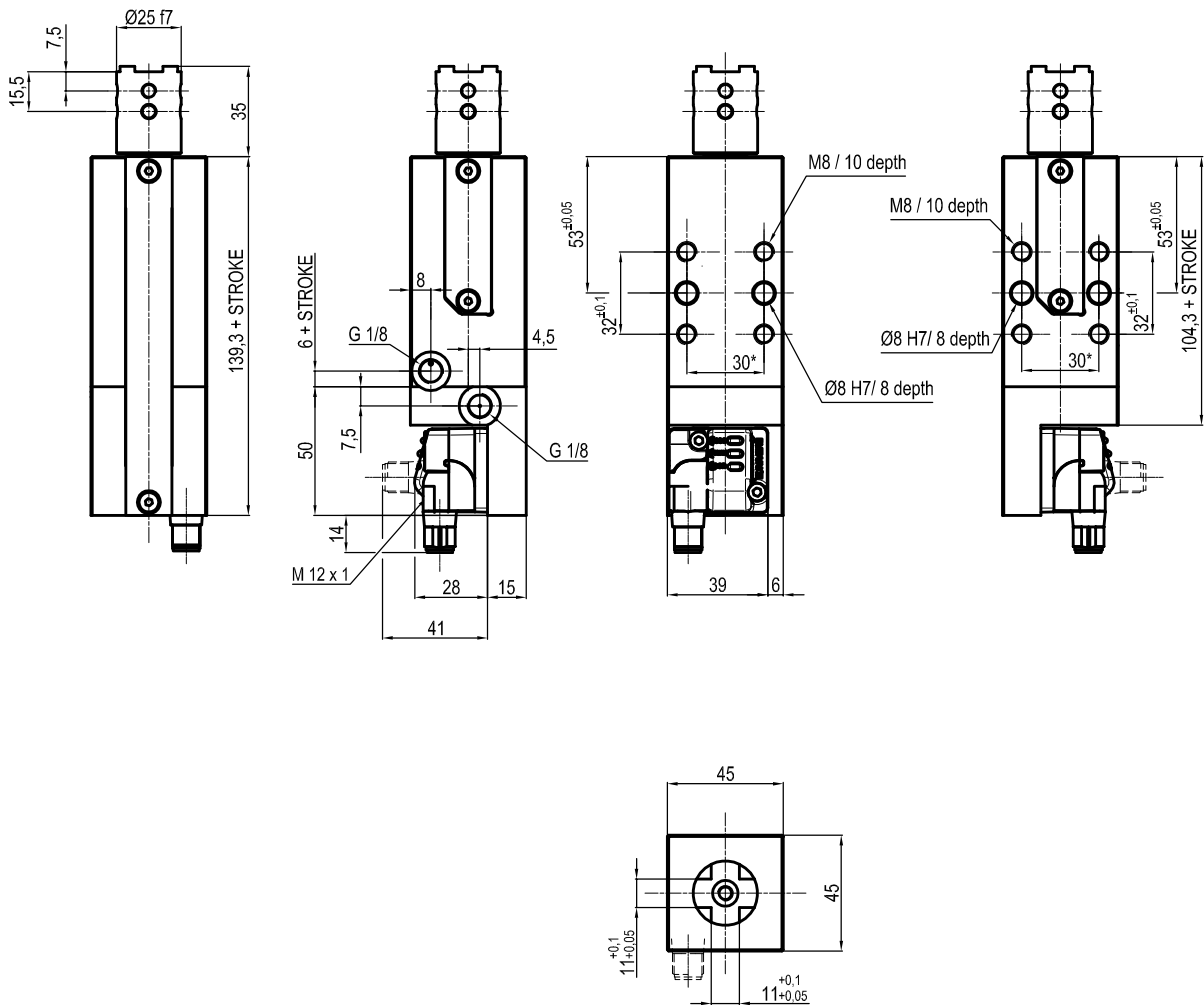
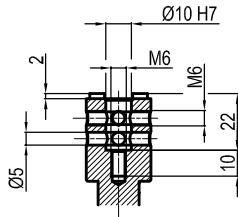
Bore Ø	Max. torque	Max. deflexion moment	Weight
32 mm	6 Nm ±0.06°	5.5 Nm ±0.03°	1.0 Kg

Min./max. operating pressure: 0,4 / 0,6 MPa
 Operating temperature: 5° + 45° C
 Strokes in mm.: 20 - 40
 Electronic sensor with M12 swivel connector that can be orientated at 0° or 90°
 Supply voltage: 10+30 Vdc
 IP code: IP 65

* : TOLERANCE BETWEEN DOWEL HOLES ± 0.02, TO SCREW HOLES ± 0.1

Subject to technical modification without notice.

UNIVERSAL Pneumatic retractable locating pin unit



Bore Ø	Max. torque	Max. deflection moment	Weight
32 mm	6 Nm ±0.06°	5.5 Nm ±0.03°	1.0 Kg

Min./max. operating pressure: 0,4 / 0,6 MPa
 Operating temperature: 5° + 45° C
 Strokes in mm.: 20 - 40
 Electronic sensor with M12 swivel connector that can be orientated at 0° or 90°
 Supply voltage: 10+30 Vdc
 IP code: IP 65

* : TOLERANCE BETWEEN DOWEL HOLES ± 0.02, TO SCREW HOLES ± 0.1

Subject to technical modification without notice.