

# PM

## Ø 16 ÷ 25 mm - ISO 6432 Stainless steel pneumatic cylinders

- Stainless steel AISI 304
- Double acting versions
- Through piston rod and adjustable cushionings versions
- Execution with or without magnet

Available ATEX version upon request



### TECHNICAL CHARACTERISTICS

|                     |  |
|---------------------|--|
| Ambient temperature | 0 ÷ 80 °C (-20°C with dry air)               |
| Fluid               | compressed air, filtered air, not lubricated |
| Working pressure    | 1 ÷ 10 bar                                   |
| Bores               | Ø 16 - 20 - 25 mm                            |

### CONSTRUCTIVE CHARACTERISTICS

|                           |                          |
|---------------------------|--------------------------|
| End-caps                  | stainless steel AISI 304 |
| Barrel                    | stainless steel AISI 304 |
| Piston                    | brass                    |
| Piston rod                | stainless steel AISI 304 |
| Piston seal               | polyurethane             |
| Guide bush for piston rod | sintered bronze          |
| Shock absorber seals      | neoprene                 |
| Magnet                    | plastroferrite           |
| Nut                       | stainless steel AISI 304 |
| O-Ring                    | nitrile rubber (NBR)     |

### CODIFICATION KEY

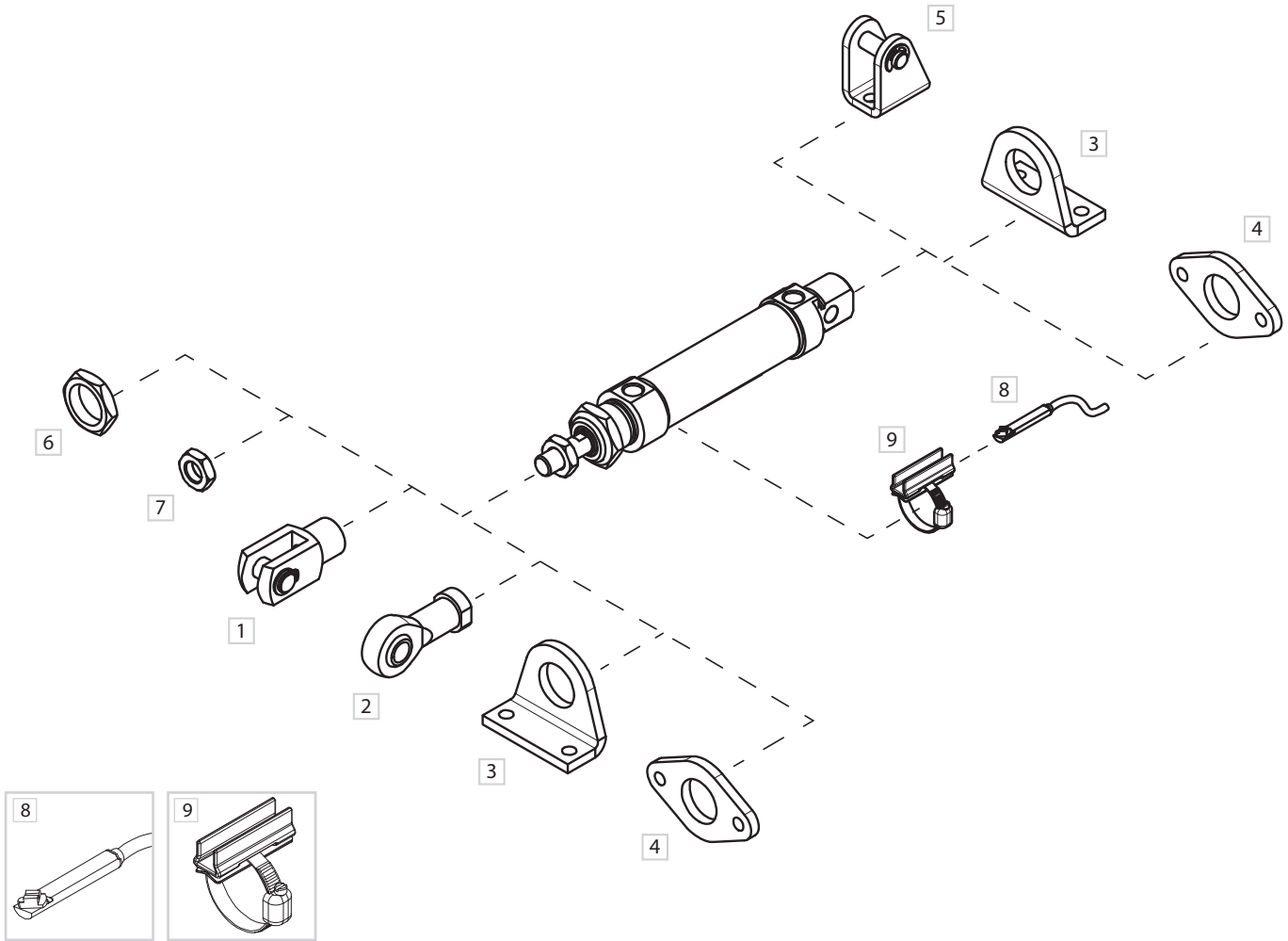
|   |   |   |   |   |   |   |   |   |   |   |   |   |  |
|---|---|---|---|---|---|---|---|---|---|---|---|---|--|
| P | M | 3 | 0 | 0 | 0 | 1 | 6 | 0 | 0 | 1 | 0 | M |  |
| 1 | 2 | 3 | 4 |   |   |   | 5 |   |   | 6 | 7 |   |  |

| 1 Series  | 2 Type                     | 3 Version   | 4 Bore (mm)  |
|---|----------------------------|---|--|
| <b>PM</b> = Ø 16 ÷ 25 mm - ISO 6432<br>Stainless steel pneumatic<br>cylinders | <b>3</b> = Male piston rod | <b>00</b> = <b>D.A.</b> Standard<br><b>01</b> = <b>D.A.</b> Through piston rod<br><b>50</b> = <b>D.A.</b> With adjustable cushionings (Ø25)<br><b>51</b> = <b>D.A.</b> Through piston rod with adjustable<br>cushionings (Ø25)<br><br><b>D.A.</b> = Double acting | <b>016</b> = Ø16<br><b>020</b> = Ø20<br><b>025</b> = Ø25 |

| 5 Stroke (mm)  | 6 Magnetic   | 7 ATEX option   |
|--|--|---|
| <b>0010</b> = 10 <b>0160</b> = 160<br><b>0025</b> = 25 <b>0200</b> = 200<br><b>0050</b> = 50 <b>0250</b> = 250<br><b>0080</b> = 80 <b>0320</b> = 320<br><b>0100</b> = 100 <b>0400</b> = 400<br><b>0125</b> = 125 <b>0500</b> = 500 | <b>M</b> = Magnetic version<br>(standard supplied) | <b>X</b> = Atex (upon request)<br><br><b>For types and versions please contact our Sales Office</b> |

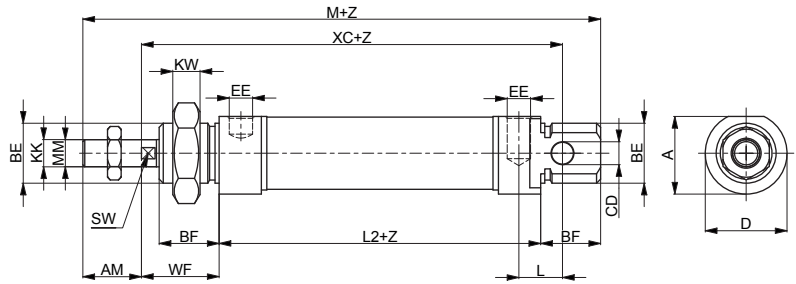
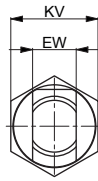
Version with high temperature seals (Max 150°C) available upon request.

Fixing elements and accessories



| DESCRIPTION                         | NOTE            | PART NO.     |
|-------------------------------------|-----------------|--------------|
| 1 Female fork with pin              | Stainless steel | MF/KF-15__PI |
| 2 Articulated self-lubricating fork | Stainless steel | MF/KF-17__I  |
| 3 Angle bracket (MS3)               | Stainless steel | MF-13__I     |
| 4 Flange (MF8)                      | Stainless steel | MF-12__I     |
| 5 Rear female hinge                 | Stainless steel | MF-21__I     |
| 6 End-cap nut                       | Stainless steel | MF-20__I     |
| 7 Piston rod nut                    | Stainless steel | MF-16__I     |
| 8 DF sensor                         | -               | DF-P700L06   |
| 9 DF bracket and adapter            | Stainless steel | DH-P__DFI    |

### Double acting

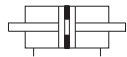


**PM300**  
D.A. Standard

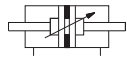


**PM350**  
D.A. with adjusting cushionings

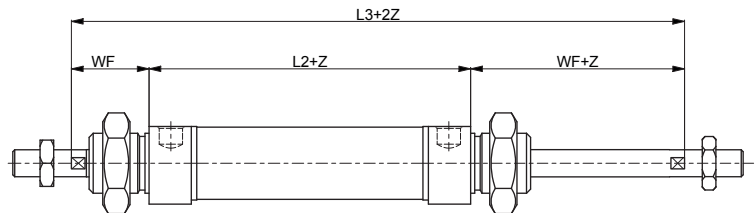
### Double acting through piston rod



**PM301**  
D.A. Through piston rod



**PM351**  
D.A. Through piston rod  
with adjustable cushionings



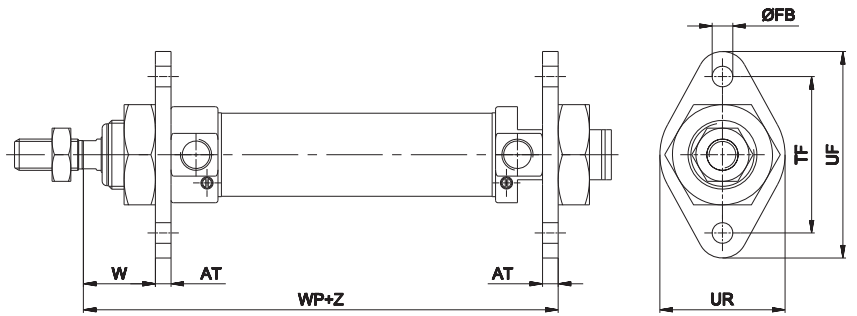
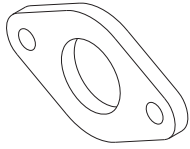
Z= Stroke

| Ø  | AM | A    | BE      | BF | CD | D   | EE     | EW | KK       | KV |
|----|----|------|---------|----|----|-----|--------|----|----------|----|
|    |    |      |         |    |    | H 9 |        |    | d 13     |    |
| 16 | 16 | 18   | M16x1,5 | 18 | 6  | 19  | M5x0,8 | 12 | M6x1     | 22 |
| 20 | 20 | 25,5 | M22x1,5 | 20 | 8  | 27  | G1/8   | 16 | M8x1,25  | 27 |
| 25 | 22 | 28,5 | M22x1,5 | 22 | 8  | 30  | G1/8   | 16 | M10x1,25 | 27 |

| Ø  | KW | L  | L2 | L3  | ØMM | M   | SW | WF | XC    |
|----|----|----|----|-----|-----|-----|----|----|-------|
|    |    |    |    |     |     |     |    |    | ± 1,2 |
| 16 | 8  | 9  | 53 | 97  | 6   | 109 | 5  | 22 | 82    |
| 20 | 11 | 12 | 67 | 115 | 8   | 131 | 7  | 24 | 95    |
| 25 | 11 | 12 | 68 | 124 | 10  | 140 | 9  | 28 | 104   |

Flange (MF8)



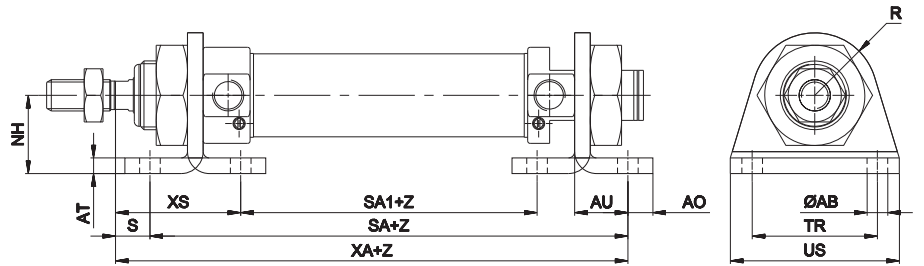
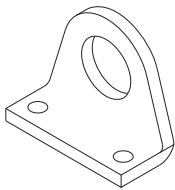
Z = Stroke

Material: Stainless steel AISI 304

| Ø  | AT | ØFB | TF   | UF | UR | W     | WP  | Part no.  |
|----|----|-----|------|----|----|-------|-----|-----------|
|    |    | H13 | Js14 |    |    | ± 1,4 |     |           |
| 16 | 4  | 5,5 | 40   | 53 | 30 | 18    | 79  | MF-12012I |
| 20 | 5  | 6,6 | 50   | 66 | 40 | 19    | 96  | MF-12020I |
| 25 | 5  | 6,6 | 50   | 66 | 40 | 23    | 101 |           |

Angle bracket (MS3)

1

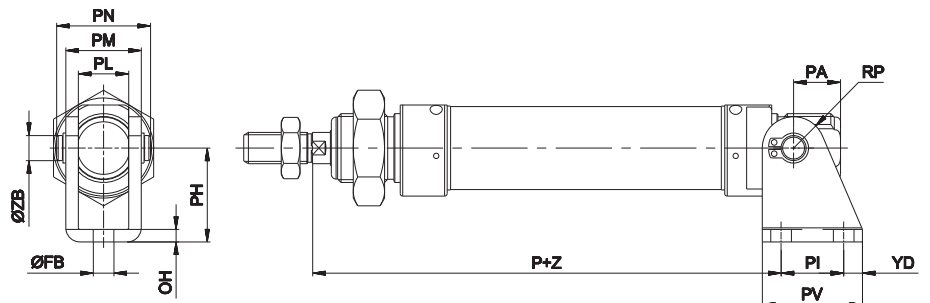
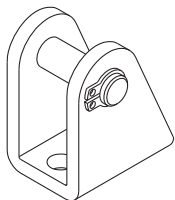


Z = Stroke

Material: Stainless steel AISI 304

| Ø  | AB  | AO | AT | AU        | NH   | R  | S  | SA  | SA1 | TR   | US | XA  | XS   | Part no.  |
|----|-----|----|----|-----------|------|----|----|-----|-----|------|----|-----|------|-----------|
|    | H13 |    |    | +0,3<br>0 | ±0,3 |    |    |     |     | Js14 |    |     | ±1,4 |           |
| 16 | 5,5 | 6  | 4  | 14        | 20   | 13 | 8  | 81  | 33  | 32   | 42 | 89  | 32   | MF-13012I |
| 20 | 6,6 | 8  | 5  | 17        | 25   | 20 | 7  | 101 | 43  | 40   | 54 | 108 | 36   | MF-13020I |
| 25 | 6,6 | 8  | 5  | 17        | 25   | 20 | 11 | 102 | 44  | 40   | 54 | 113 | 40   |           |

Rear female hinge



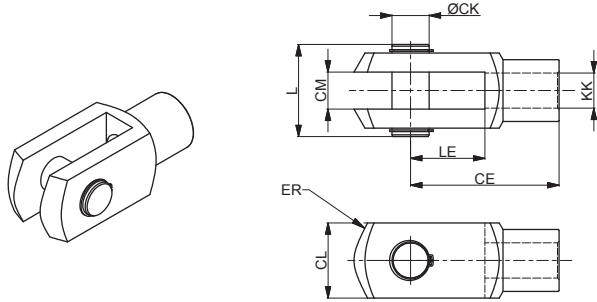
Z = Stroke

Including bolt and 2 circlips

Material: Stainless steel AISI 304

| Ø  | FB  | OH | P   | PA | PH | PI | PL   | PM   | PN | PV | RP | YD | ZB | Part no.  |
|----|-----|----|-----|----|----|----|------|------|----|----|----|----|----|-----------|
|    | H13 |    |     |    |    |    | E9   |      |    |    |    |    | f8 |           |
| 16 | 5,5 | 3  | 80  | 13 | 27 | 15 | 12,1 | 18,1 | 23 | 25 | 7  | 5  | 6  | MF-21012I |
| 20 | 6,6 | 4  | 91  | 16 | 30 | 20 | 16,1 | 24,1 | 30 | 32 | 10 | 6  | 8  | MF-21020I |
| 25 | 6,6 | 4  | 100 | 16 | 30 | 20 | 16,1 | 24,1 | 30 | 32 | 10 | 6  | 8  |           |

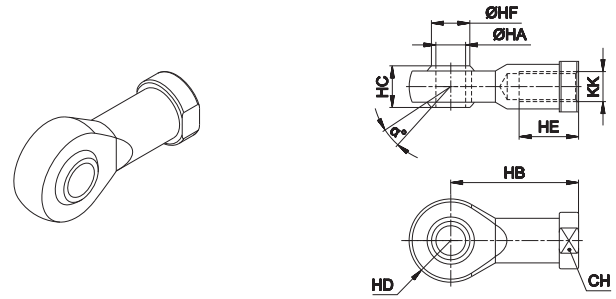
Female fork with pin



Material: Stainless steel AISI 303 (Ø16-20) 304 (Ø25)

| Ø  | CE | CK | CL | CM | ER | KK       | L  | LE | Part no.   |
|----|----|----|----|----|----|----------|----|----|------------|
|    |    |    |    |    |    |          |    |    |            |
| 16 | 24 | 6  | 12 | 6  | 7  | M6x1     | 16 | 12 | MF-15012PI |
| 20 | 32 | 8  | 16 | 8  | 10 | M8x1,25  | 22 | 16 | MF-15020PI |
| 25 | 40 | 10 | 20 | 10 | 16 | M10x1,25 | 26 | 20 | KF-15032PI |

Articulated self-lubricating fork



Material: Stainless steel AISI 303 (Ø16-20) 304 (Ø25)

| Ø  | α°  | CH | KK       | HA | HB | HC | HD | HE | HF   | Part no.  |
|----|-----|----|----------|----|----|----|----|----|------|-----------|
|    |     |    |          |    |    |    |    |    |      |           |
| 16 | 13° | 11 | M6x1     | 6  | 30 | 9  | 10 | 12 | 9    | MF-17012I |
| 20 | 14° | 14 | M8x1,25  | 8  | 36 | 12 | 12 | 16 | 10,4 | MF-17020I |
| 25 | 13° | 17 | M10x1,25 | 10 | 43 | 14 | 14 | 20 | 12,9 | KF-17032I |

Piston rod nut



Material: Stainless steel AISI 304

| Ø  | KK       | KV | KW | Part no.  |
|----|----------|----|----|-----------|
| 16 | M6x1     | 10 | 4  | MF-16012I |
| 20 | M8x1,25  | 13 | 5  | MF-16020I |
| 25 | M10x1,25 | 17 | 6  | KF-16032I |

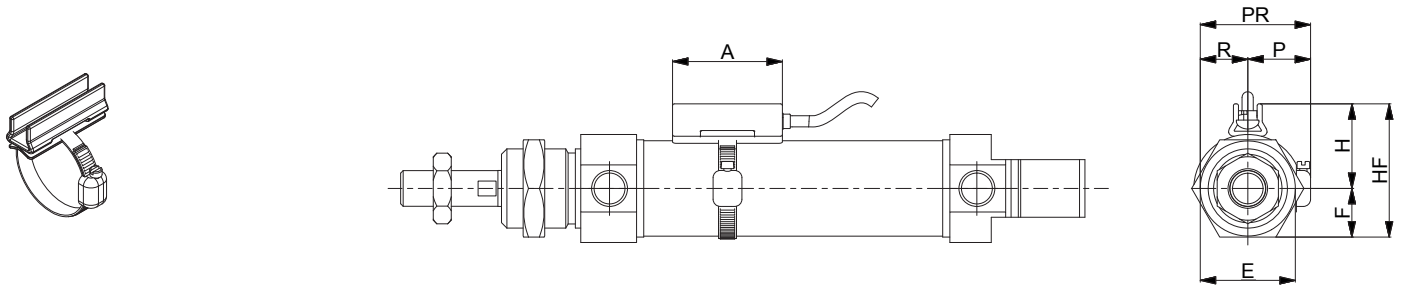
End-cap nut



Material: Stainless steel AISI 303

| Ø  | BE      | KV1 | KW1 | Part no.  |
|----|---------|-----|-----|-----------|
| 16 | M16x1,5 | 24  | 8   | MF-20012I |
| 20 | M22x1,5 | 32  | 10  | MF-20020I |

DF bracket

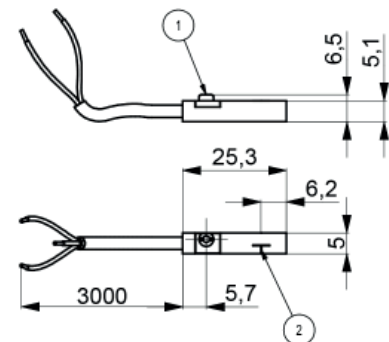


Material: Stainless steel AISI 303

| Ø  | A  | E  | F  | H  | HF | P  | R  | PR | Part no.      |
|----|----|----|----|----|----|----|----|----|---------------|
| 16 | 34 | 22 | 11 | 18 | 29 | 17 | 11 | 28 | DH-P016020DFI |
| 20 | 34 | 24 | 12 | 20 | 32 | 17 | 12 | 29 |               |
| 25 | 34 | 32 | 16 | 23 | 39 | 19 | 16 | 35 | DH-P025032DFI |

For DF sensors see accessories section

DF sensor



| 1                | 2                   | Part no.   |
|------------------|---------------------|------------|
| fixing eccentric | active sensing face | DF-P700L06 |