



Pneumatic limit switches

- Compact and lightweight (small size)
Minimal actuation force and high response speed
M5 threaded connections or Ø4 tube quick fitting
Wide range of actuators and original Univer panel-mounted manual controls



Fluid	filtered air 50 µm, with or without lubrication
Temperature ambient	-10 ÷ +90°C
Temperature fluid	max +50°C
Commutation system	poppet
Ways/Position	2/2 NC, 3/2 NC, 3/2 NO
Pressure	Max 10 bar
Control	manual, mechanical
Return	mechanical spring
Connections	M5, tube Ø4
Nominal bore (mm)	2,5 mm
Nominal flow rate (NI/min)	70 NI/min
Valve body	zamak
Seals	NBR
Spool	nickel-plated brass

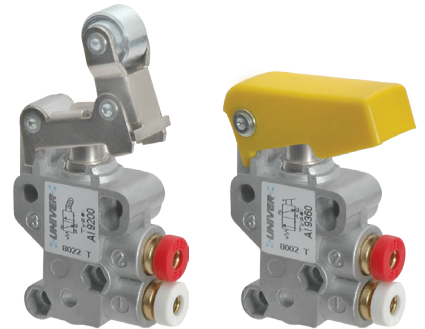


Reference standard

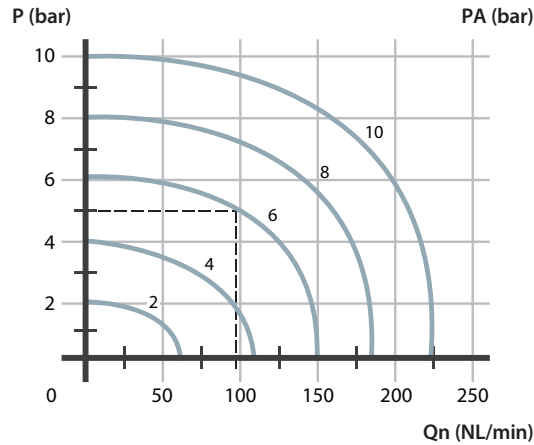
II 2G Ex h IIC T5 Gb



II 2D Ex h IIIC T100°C Db

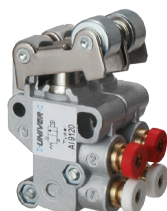


OTHER VERSIONS AVAILABLE


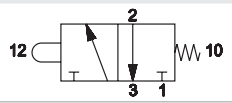
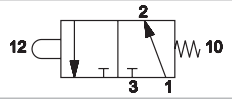
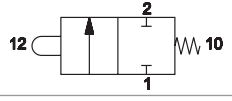

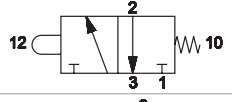
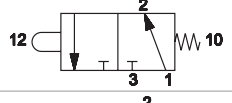
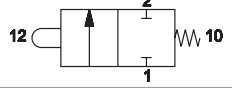


P (bar) = Working pressure
PA (bar) = Supply pressure
Qn (NL/min) = Flow rate

OTHER VERSIONS AVAILABLE

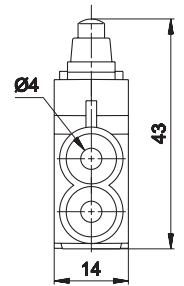
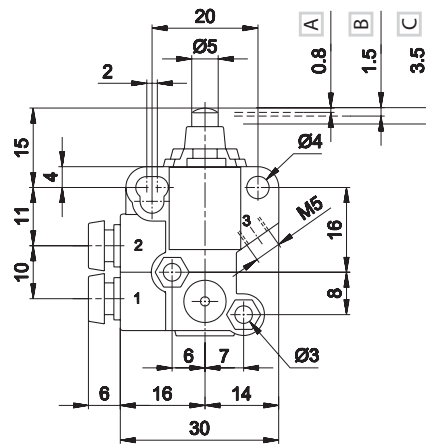
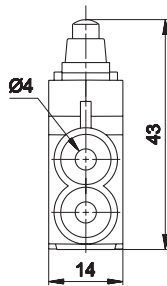
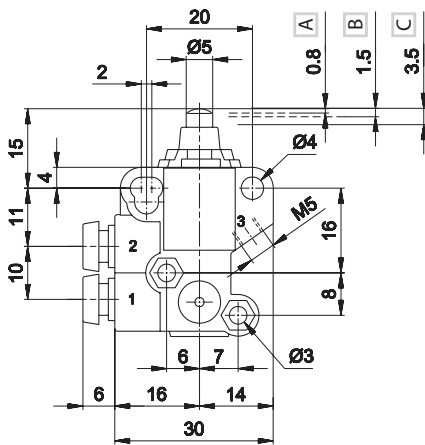


BALL-PUSH - SPRING

	Code	Way	Connection	Return	Force N	Weight Kg	
	AM-9000	3/2 NC	tube Ø4	mechanical spring	14	0,060	
	AM-9010	3/2 NO	tube Ø4	mechanical spring	14	0,060	
	AM-9020	2/2 NC	tube Ø4	mechanical spring	14	0,060	
	AM-9000M	3/2 NC	M5	mechanical spring	14	0,060	
	AM-9010M	3/2 NO	M5	mechanical spring	14	0,060	
	AM-9020M	2/2 NC	M5	mechanical spring	14	0,060	

TUBO Ø4

M5



- 1 = Supply port
- 2 = Use
- 3 = Exhaust

- 1 = Supply port
- 2 = Use
- 3 = Exhaust

A = Pre-stroke

A = Pre-stroke

B = Maximum opening

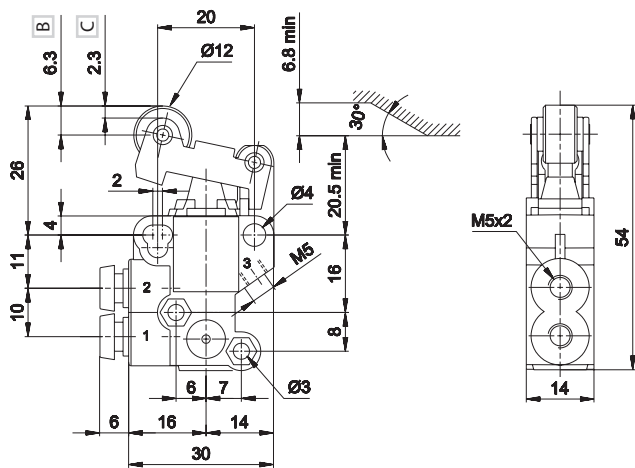
B = Maximum opening

C = Total stroke

C = Total stroke

ROLLER LEVER - SPRING

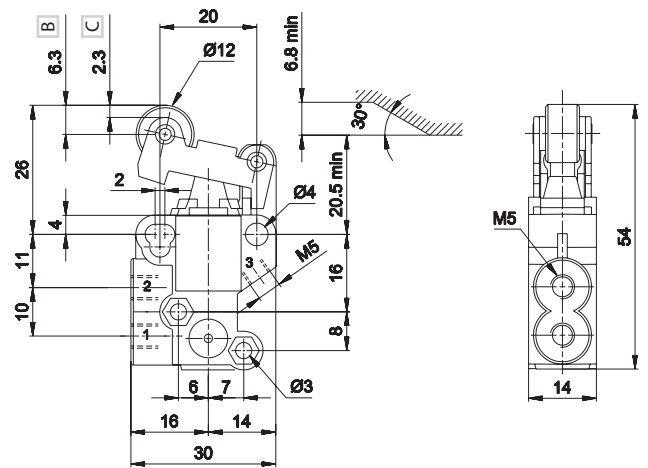
	Code	Way	Connection	Return	Force N	Weight Kg	
	AM-9100	3/2 NC	tube Ø4	mechanical spring	7	0,085	
	AM-9110	3/2 NO	tube Ø4	mechanical spring	7	0,085	
	AM-9120	2/2 NC	tube Ø4	mechanical spring	7	0,085	
	AM-9100M	3/2 NC	M5	mechanical spring	7	0,085	
	AM-9110M	3/2 NO	M5	mechanical spring	7	0,085	
	AM-9120M	2/2 NC	M5	mechanical spring	7	0,085	

TUBO Ø4


- 1 = Supply port
- 2 = Use
- 3 = Exhaust

B = Maximum opening

C = Total stroke

M5


- 1 = Supply port
- 2 = Use
- 3 = Exhaust

B = Maximum opening

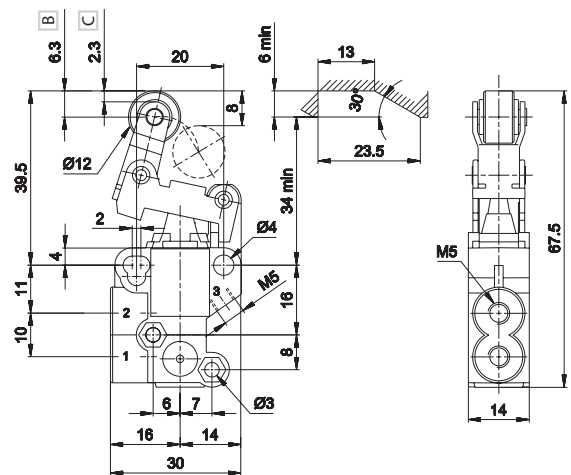
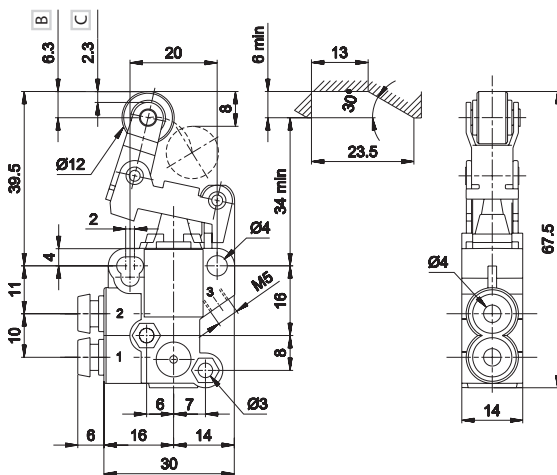
C = Total stroke

UNI-DIRECTIONAL ROLLER LEVER - SPRING

	Code	Way	Connection	Return	Force N	Weight Kg	
	AM-9200	3/2 NC	tube Ø4	mechanical spring	4	0,085	
	AM-9210	3/2 NO	tube Ø4	mechanical spring	4	0,085	
	AM-9220	2/2 NC	tube Ø4	mechanical spring	4	0,085	
	AM-9200M	3/2 NC	M5	mechanical spring	4	0,085	
	AM-9210M	3/2 NO	M5	mechanical spring	4	0,085	
	AM-9220M	2/2 NC	M5	mechanical spring	4	0,085	

TUBE Ø4

M5



- 1 = Supply port
- 2 = Use
- 3 = Exhaust

B = Maximum opening


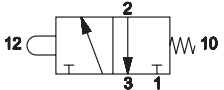
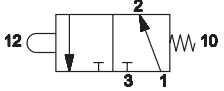
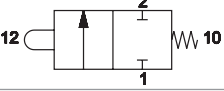

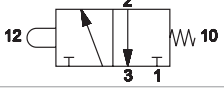
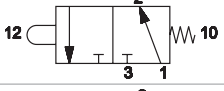
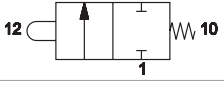
C = Total stroke

- 1 = Supply port
- 2 = Use
- 3 = Exhaust

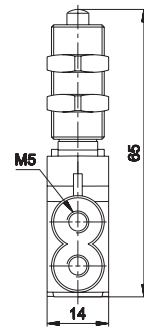
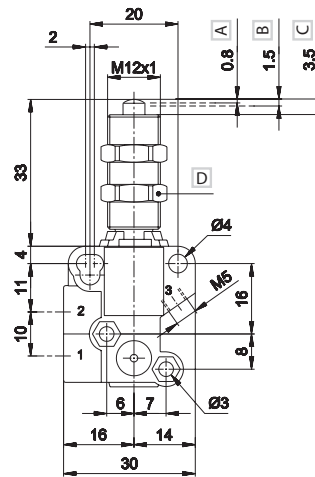
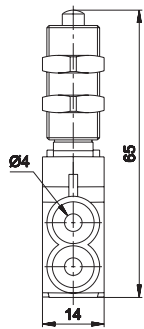
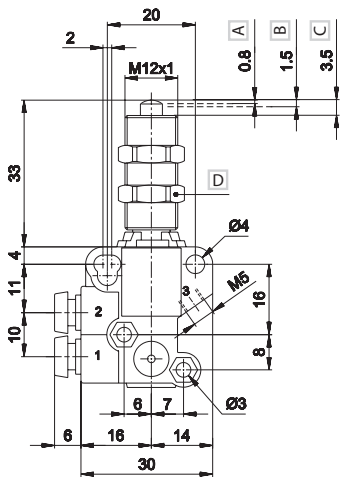
B = Maximum opening

C = Total stroke

MECHANICAL PUSH BUTTON WITH SCREW MOUNTING - SPRING

	Code	Way	Connection	Return	Force N	Weight Kg	
	AM-9300	3/2 NC	tube Ø4	mechanical spring	14	0,082	
	AM-9310	3/2 NO	tube Ø4	mechanical spring	14	0,082	
	AM-9320	2/2 NC	tube Ø4	mechanical spring	14	0,082	
	AM-9300M	3/2 NC	M5	mechanical spring	14	0,082	
	AM-9310M	3/2 NO	M5	mechanical spring	14	0,082	
	AM-9320M	2/2 NC	M5	mechanical spring	14	0,082	

TUBE Ø4 M5



- 1 = Supply port
- 2 = Use
- 3 = Exhaust

- 1 = Supply port
- 2 = Use
- 3 = Exhaust

- A = Pre-stroke
- B = Maximum opening
- C = Total stroke
- D = Wrench 14

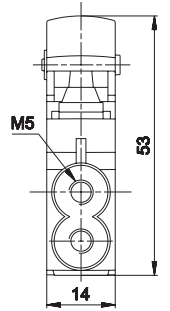
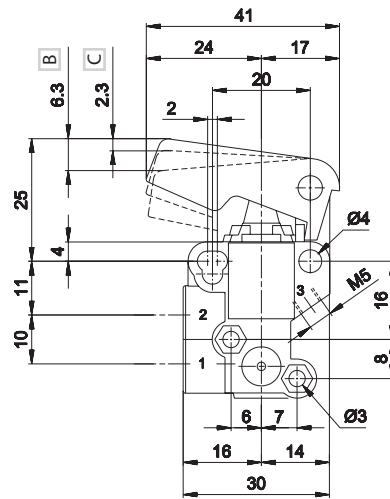
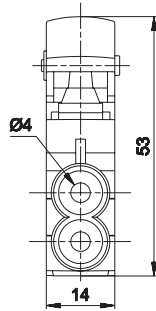
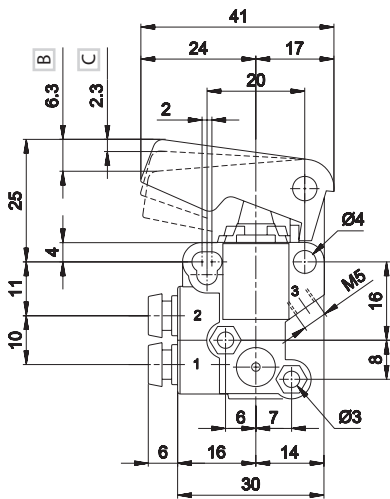
- A = Pre-stroke
- B = Maximum opening
- C = Total stroke
- D = Wrench 14

BUTTON - SPRING

	Code	Way	Connection	Return	Force N	Weight Kg	
	AM-9350	3/2 NC	tube Ø4	mechanical spring	7	0,065	
	AM-9360	3/2 NO	tube Ø4	mechanical spring	7	0,065	
	AM-9370	2/2 NC	tube Ø4	mechanical spring	7	0,065	
	AM-9350M	3/2 NC	M5	mechanical spring	7	0,065	
	AM-9360M	3/2 NO	M5	mechanical spring	7	0,065	
	AM-9370M	2/2 NC	M5	mechanical spring	7	0,065	

TUBE Ø4

M5



- 1 = Supply port
- 2 = Use
- 3 = Exhaust

- 1 = Supply port
- 2 = Use
- 3 = Exhaust

B = Maximum opening

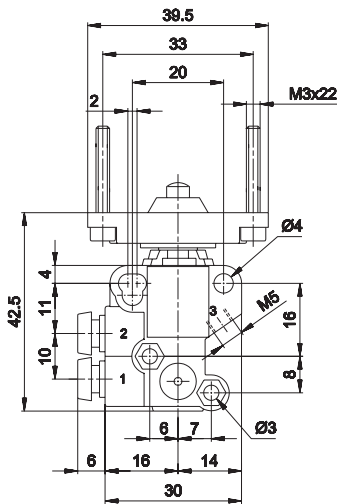
B = Maximum opening

C = Total stroke

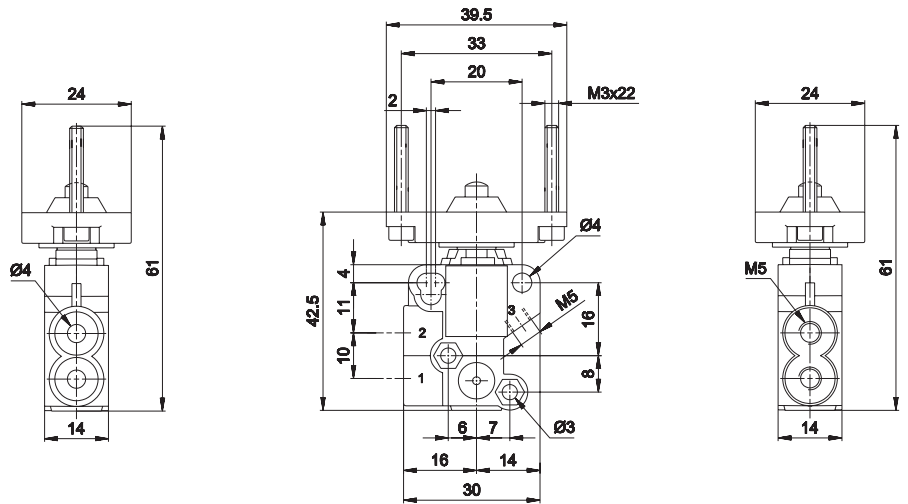
C = Total stroke

MECHANICAL PUSH BUTTON FOR PANEL MOUNTING - SPRING

	Code	Way	Connection	Return	Force N	Weight Kg	
	AM-9400	3/2 NC	tube Ø4	mechanical spring	14	0,075	
	AM-9410	3/2 NO	tube Ø4	mechanical spring	14	0,075	
	AM-9420	2/2 NC	tube Ø4	mechanical spring	14	0,075	
	AM-9400M	3/2 NC	M5	mechanical spring	14	0,075	
	AM-9410M	3/2 NO	M5	mechanical spring	14	0,075	
	AM-9420M	2/2 NC	M5	mechanical spring	14	0,075	

TUBE Ø4


1 = Supply port
2 = Use
3 = Exhaust

M5


1 = Supply port
2 = Use
3 = Exhaust

MANUAL ACTUATORS

	AI-3511Q	■ BLACK	Recessed button	
	AI-3512Q	■ RED		
	AI-3513Q	■ GREEN		
	AI-3514Q	■ RED	Head button	
	AI-3516Q	■ BLACK		
	AI-3514QD	■ RED		
	AI-3516QD	■ BLACK	Button	
	AI-3515Q	■ GREEN		
	AI-3517Q	■ RED		
	AI-3519Q	■ BLACK	Accident prevention rotating selector	
	AI-3520Q	■ BLACK		
AI-3521Q	■ BLACK			

MANUAL ACTUATORS

	AI-3522Q	■ BLACK	Rotating lever selector	
	AI-3523Q	■ BLACK		
	AI-3524Q	■ BLACK	Lever operator	
	AI-3525Q	■ BLACK	Omni-directional operator	
	AI-3526Q	■ BLACK	Push-pull operator	