



2/2 - 3/2 G1/8 poppet valves, main features:

- Closed centers
- High flow rate
- Quick response time
- Suitable for heavy duties and where the number of mechanical operation is high



Fluid	filtered air 50 µm, with or without lubrication,
Temperature Ambient	- 10 °C / + 45 °C
Temperature fluid	max 50°C
Commutation system	poppet
Way/Position	2/2 NC-NO, 3/2 NC-NO
Pressure	Max 10 bar (1 MPa)
Control	manual, mechanical
Return	mechanical spring
Connections	G1/8
Nominal bore (mm)	5
Nominal flow rate (NI/min)	600 (NC), 550 (NO)
Valve body	zamak
Seals	NBR
Operators	galvanised steel/ technopolymer
Spool	nickel-plated brass



Reference standard

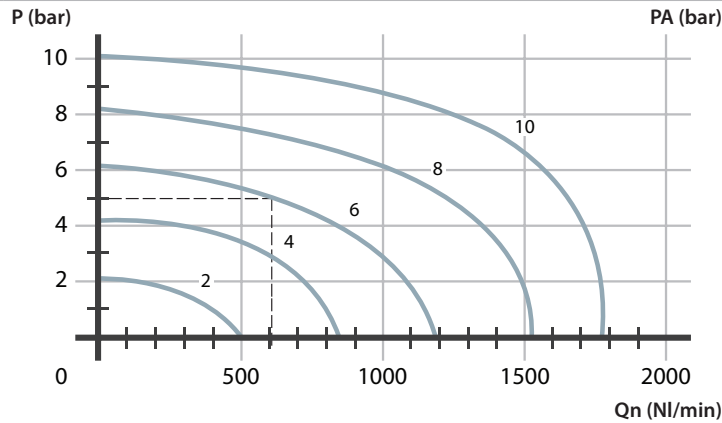
II 2G Ex h IIC T5 Gb



II 2D Ex h IIIC T100°C Db

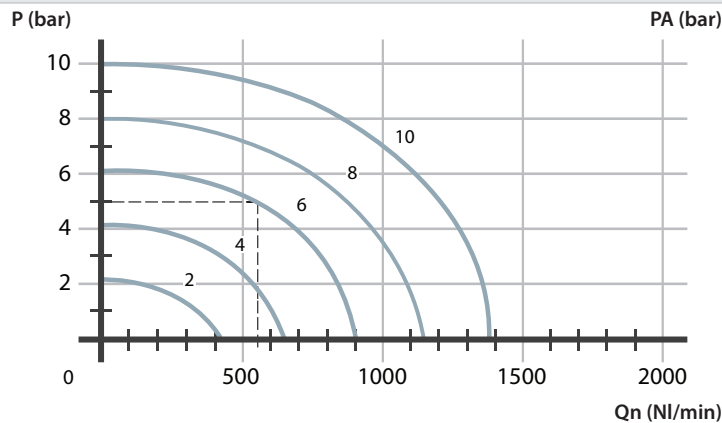


3/2 NC



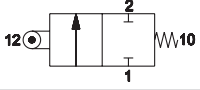
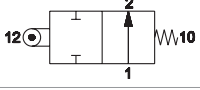
P = Working pressure
PA = Supply pressure
Qn = Flow rate

3/2 NO



P = Working pressure
PA = Supply pressure
Qn = Flow rate

ROLLER LEVER - SPRING

	Code	Way	Thread	Flow rate NI/min	Force N	Weight Kg	
	CH-252	2/2 NC	G 1/8	600	21	0.2	
	CH-256	2/2 NO	G 1/8	550	15	0.2	
	CH-250	3/2 NC	G 1/8	600	21	0.2	
	CH-254	3/2 NO	G 1/8	550	15	0.2	

UNI-DIRECTIONAL ROLLER LEVER - SPRING

	Code	Way	Thread	Flow rate NI/min	Force N	Weight Kg	
	CH-262	2/2 NC	G 1/8	600	16	0.21	
	CH-266	2/2 NO	G 1/8	550	12	0.21	
	CH-260	3/2 NC	G 1/8	600	16	0.21	
	CH-264	3/2 NO	G 1/8	550	12	0.21	

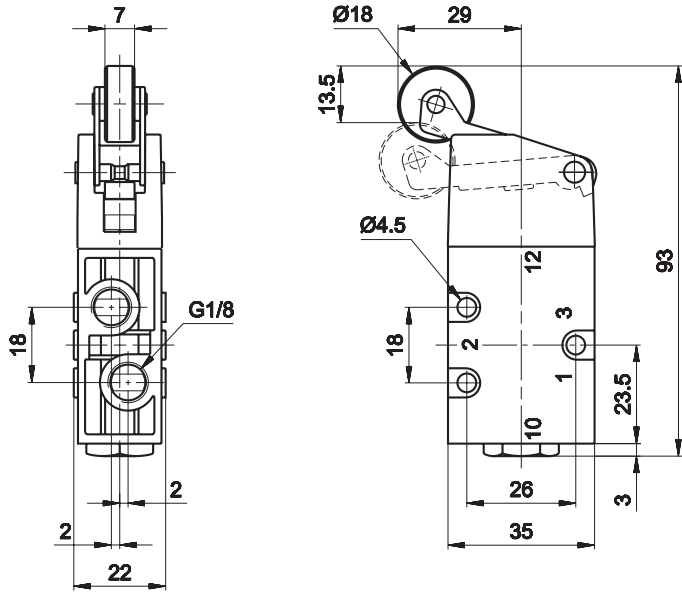
BALL-PUSH - SPRING

	Code	Way	Thread	Flow rate NI/min	Force N	Weight Kg	
	CH-272	2/2 NC	G 1/8	600	51	0.18	
	CH-276	2/2 NO	G 1/8	550	39	0.18	
	CH-270	3/2 NC	G 1/8	600	51	0.18	
	CH-274	3/2 NO	G 1/8	550	39	0.18	

BUTTON LEVER - SPRING

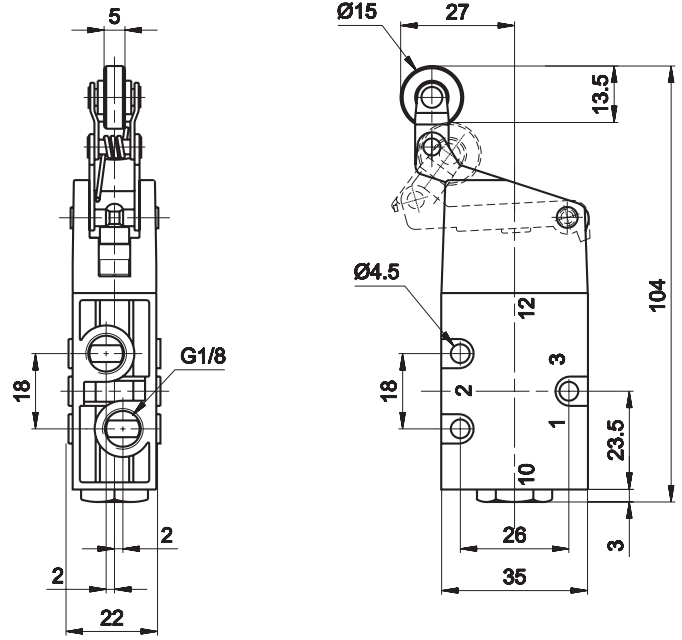
	Code	Way	Thread	Flow rate NI/min	Force N	Weight Kg	
	CH-282	2/2 NC	G 1/8	600	18	0.18	
	CH-286	2/2 NO	G 1/8	550	14	0.18	
	CH-280	3/2 NC	G 1/8	600	18	0.18	
	CH-284	3/2 NO	G 1/8	550	14	0.18	

LEVA A RULLO - MOLLA



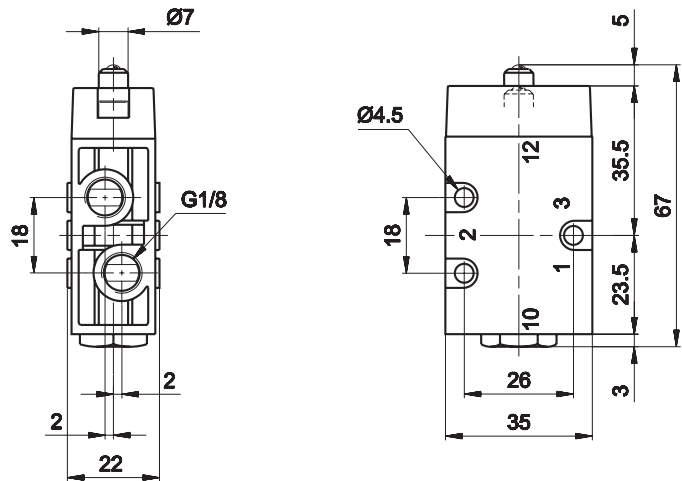
- 1 = Supply port
- 2 = Use
- 3 = Exhaust
- 4 = Control
- 5 = Return

LEVA A RULLO UNIDIREZIONALE - MOLLA



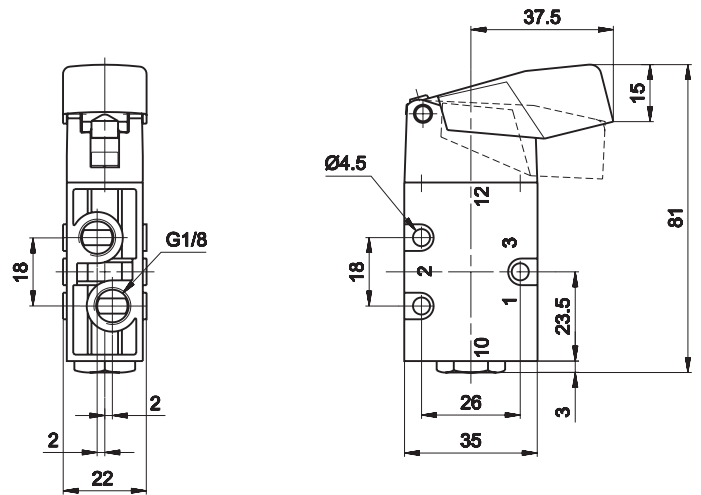
- 1 = Supply port
- 2 = Use
- 3 = Exhaust
- 4 = Control
- 5 = Return

PUNTALE A SFERA - MOLLA



- 1 = Supply port
- 2 = Use
- 3 = Exhaust
- 4 = Control
- 5 = Return

LEVA A TASTO - MOLLA



- 1 = Supply port
- 2 = Use
- 3 = Exhaust
- 4 = Control
- 5 = Return