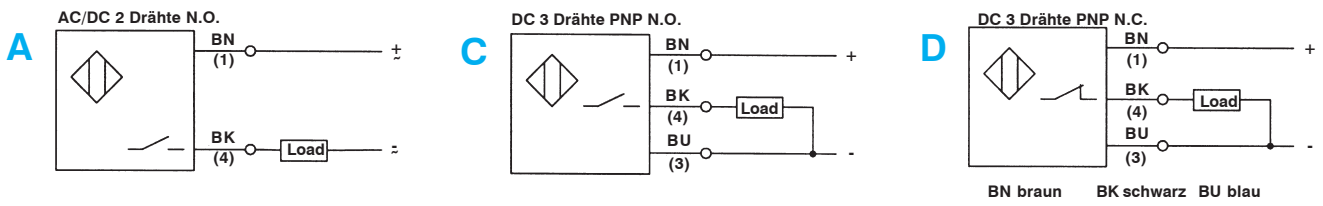
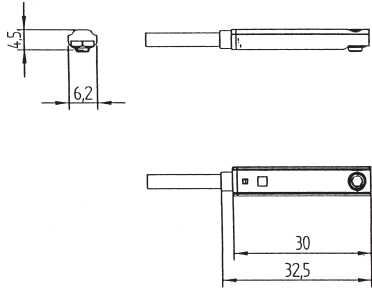


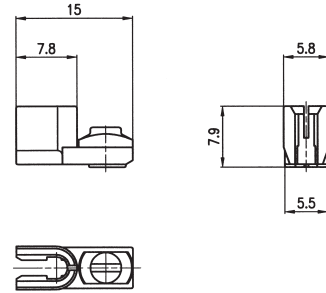
**Elektrische Stromkreise**



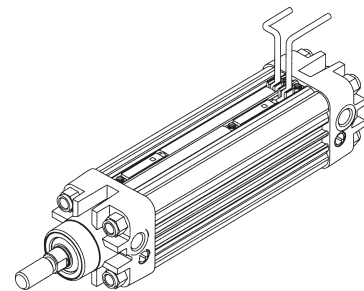
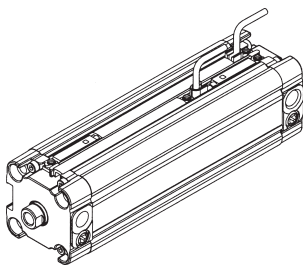
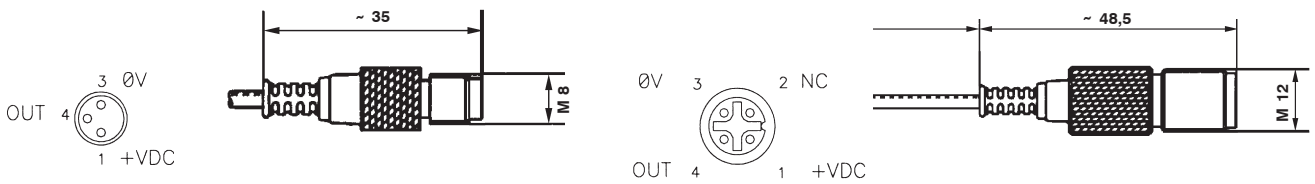
**Maximale Abmessungen DF-... mit im hierumfang enthaltener Kabelklemme**



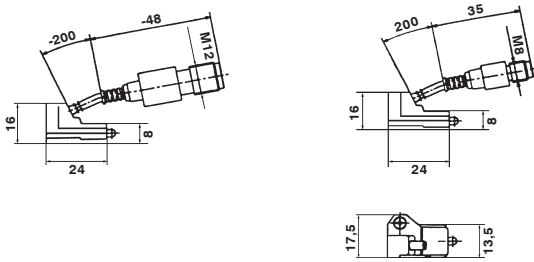
**Kabelklemme DF-001**



**Steckverbinder M08, M12**

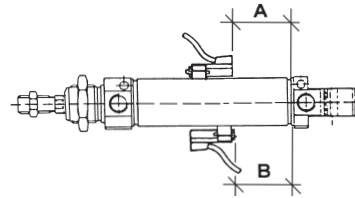


**Maximale Abmessungen DH-...**

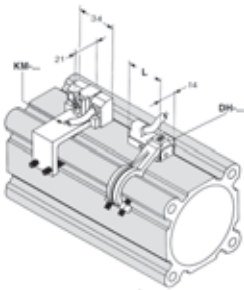


**Korrekte Befestigung**

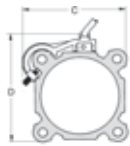
Der Magnetsensor wird am Zylinder mit der speziellen Halterung befestigt oder einfach in die Zylindernut eingelassen.



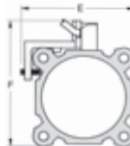
**Zylinder ISO Serie K**



DH-....



KM-....



| Zyl. Ø | A-B     | C   | D   | Artikelnr. Halterung | E   | F   | Artikelnr. Sensor plus Halterung |
|--------|---------|-----|-----|----------------------|-----|-----|----------------------------------|
| 32     | 4 - 4   | 50  | 57  | DH-K032050           | 50  | 62  | KM-032050                        |
| 40     | 6 - 6   | 56  | 63  |                      | 55  | 67  |                                  |
| 50     | 6 - 6   | 64  | 74  |                      | 65  | 77  |                                  |
| 63     | 6 - 7   | 81  | 87  | DH-K063125           | 80  | 82  | KM-063100                        |
| 80     | 9 - 10  | 96  | 104 |                      | 97  | 109 |                                  |
| 100    | 10 - 10 | 114 | 125 |                      | 114 | 126 |                                  |
| 125    | 18 - 18 | 138 | 150 | DH-K160200           | 137 | 149 | KM-125000                        |
| 160    | 25 - 27 | 180 | 180 |                      |     |     |                                  |
| 200    | 24 - 26 | 200 | 220 |                      |     |     |                                  |

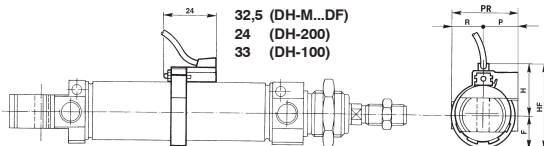
**Mikrozylinder Serie M**



DH-...



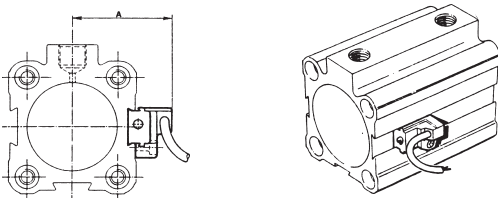
DH-M...DF



| Zyl. Ø | A-B         | F    | H    | HF | P  | R  | PR | Artikelnr. Serie M |
|--------|-------------|------|------|----|----|----|----|--------------------|
| 10     | 11 - 11     | 12,5 | 22,5 | 35 | 17 | 10 | 27 | DH-M10             |
| 12     | 12,5 - 12,5 | 11,5 | 23,5 | 35 | 17 | 10 | 27 | DH-M12             |
| 16     | 14 - 14     | 15   | 25   | 40 | 18 | 13 | 31 | DH-M16             |
| 20     | 18,5 - 18,5 | 19   | 27   | 46 | 18 | 17 | 35 | DH-M20             |
| 25     | 19 - 19     | 18   | 30   | 48 | 20 | 17 | 37 | DH-M25             |

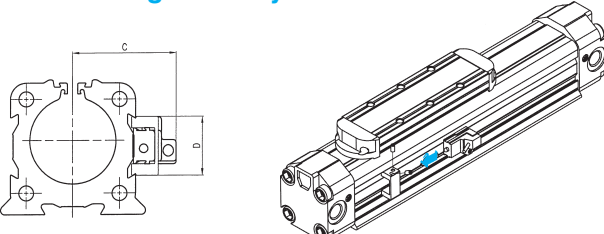
Bei Bestellung der Halterung für versenkten Sensor Serie DF-... zur Artikelnummer Suffix DF hinzufügen.

**Kurzhubzylinder Serie W (kein Befestigungselement nötig)**



| Zyl. Ø | 16   | 20   | 25    | 32    | 40   | 50  | 63  | 80   | 100   |
|--------|------|------|-------|-------|------|-----|-----|------|-------|
| A-B    | 8-8  | 9-9  | 11-10 | 11-10 | 7-7  | 6-6 | 5-5 | 8-7  | 11-11 |
| A      | 26,8 | 28,8 | 31,3  | 35,3  | 39,5 | 44  | 52  | 60,5 | 71    |

**Kolbenstangenlose Zylinder Serie S1**



| Zyl. Ø | A-B     | C  | D  | Artikelnr. Halterung |
|--------|---------|----|----|----------------------|
| 25     | 25 - 35 | 34 | 21 | DH-S25               |
| 32     | 35 - 35 | 39 | 22 | DH-S32               |
| 40     | 50 - 50 | 46 | 29 | DH-S40               |
| 50     | 60 - 60 | 54 | 35 | DH-S50               |